



SOAR

E Student Orientation Advising & Registration

WORKBOOK

2024

**INTRODUCTION TO THE GENERAL
EDUCATION PROGRAM 4**

FINANCIAL PLANNING GUIDE 8

FERPA QR CODE 9

WEEK AT A GLANCE WORKSHEET 10
A grid to help plan course schedules

PLAN AHEAD WORKSHEET 11

SEMESTER PLAN WORKSHEET 13

CAMPUS LIFE COACHES 14

ADVISING OFFICE INFORMATION 15
Locations for campus advising offices

ACADEMIC RESOURCES 16
Locations and Information for academic resources on campus

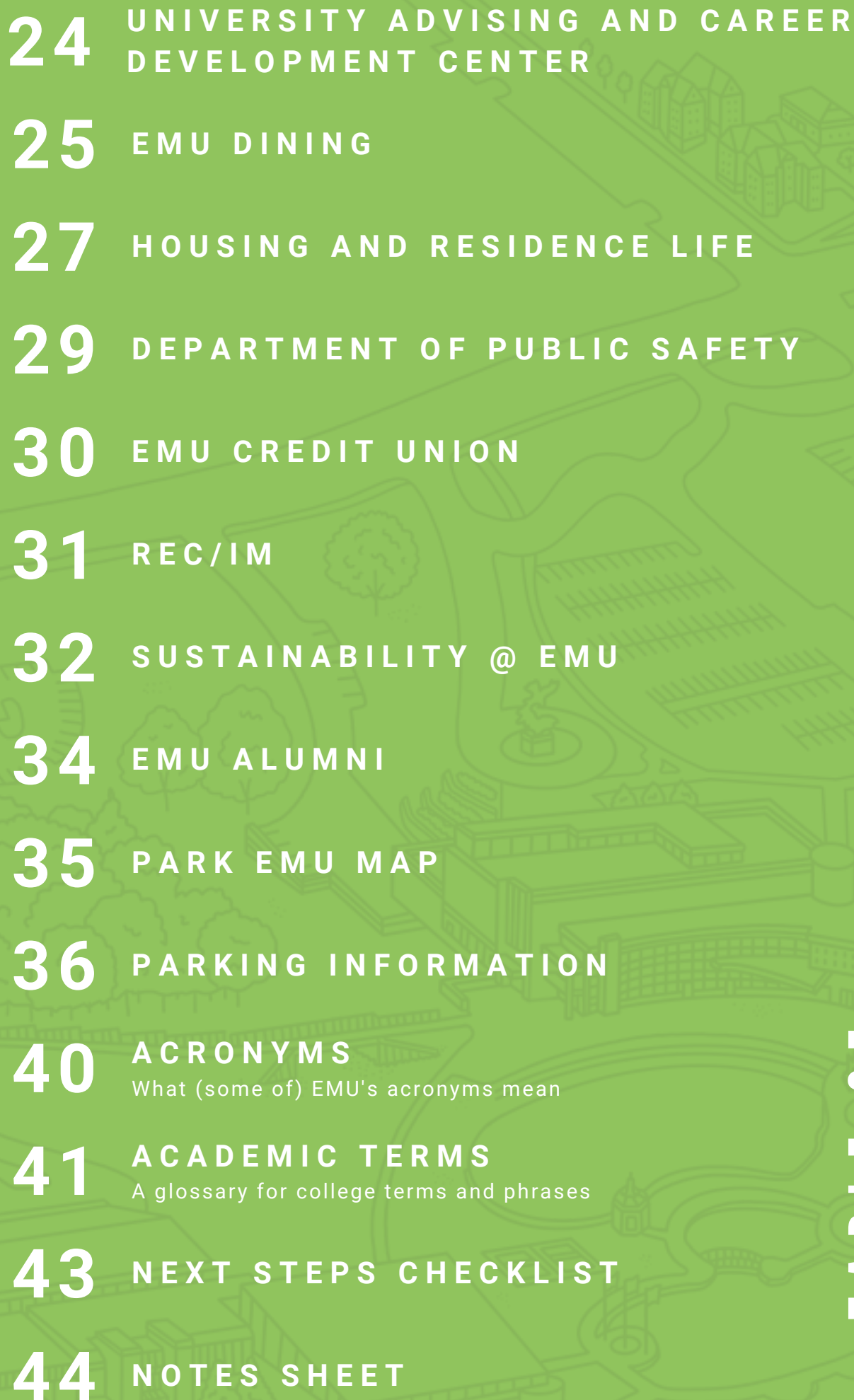
DISABILITY RESOURCE CENTER 17

STUDENT LIFE RESOURCES 18
Locations and Information for student life resources on campus

GENERAL RESOURCES 21
Some good-to-know campus information and resources

CAMPUS WELLNESS WHEEL 22
From the Office of Wellness and Community Responsibility

DIVERSITY, EQUITY, & INCLUSION 23



24	UNIVERSITY ADVISING AND CAREER DEVELOPMENT CENTER
25	EMU DINING
27	HOUSING AND RESIDENCE LIFE
29	DEPARTMENT OF PUBLIC SAFETY
30	EMU CREDIT UNION
31	REC/IM
32	SUSTAINABILITY @ EMU
34	EMU ALUMNI
35	PARK EMU MAP
36	PARKING INFORMATION
40	ACRONYMS What (some of) EMU's acronyms mean
41	ACADEMIC TERMS A glossary for college terms and phrases
43	NEXT STEPS CHECKLIST
44	NOTES SHEET

TABLE OF CONTENTS

General Education Program [Education for Participation in the Global Community]

The General Education Program is the basis for lifelong learning and participation in a global world. It provides a rich experience across various academic activities and promotes intellectual curiosity and a love of learning. Like a major, it is a program that students complete to earn a bachelor's degree. The program itself is adaptable to different phases of a student's Bachelor's degree process and their ultimate personal aims.

General Education Program requirements are included in the minimum credit hours required to graduate. All courses are three (3) credit hours unless indicated in parentheses (x). Courses taken to satisfy General Education requirements may also count toward major OR minor requirements. With a **completed MTA stamp**, students will have satisfied, Effective Communication, Quantitative Reasoning, and Knowledge of the Disciplines.

It's important to note that some general education courses may only be offered occasionally or, in some cases, not during a student's time at EMU.

Refer to the Undergraduate Catalog at catalog.emich.edu for details, including important General Education policies.

Effective Communication

Complete two required courses in Effective Communication or waiver.

WRTG 121 Composition II: Researching the Public Experience [ENGL 121] OR Waiver OR ESLN 412 Academic Writing (ESL students only)

COMM 124 Foundations of Speech Communication [CTAC 124, CTAS 124] OR Waiver

Quantitative Reasoning

Complete one approved course or course sequence in Quantitative Reasoning or waiver.

Course selection and eligibility are determined as follows.

- A student with an **ACT math sub-score of <19** or an **SAT math sub-score of <520** satisfies the QR requirement by completing MATH 097 **or** MATH 098, **and** one approved Quantitative Reasoning course. *Course selections will depend on the student's major/minor. Students should select the course sequence in coordination with an academic advisor.*
- A student with an **ACT math sub-score between 19-22** **or** an **SAT math sub-score between 520-570** satisfies the QR requirement by completing **one** of the following three options: 1) MATH 110, 2) MATH 180, 3) MATH 104, and one approved Quantitative Reasoning course.
- A student with an **ACT math sub-score between 23-27** **or** an **SAT math sub-score between 580-660** **or** an **Advanced Math Placement Test score between 260-290**, **or** an **ALEKS Test score of 46-75** **or** earned a **minimum grade of "C" in MATH 104** are eligible to take any of the approved Quantitative Reasoning courses to satisfy this requirement, providing they also meet course prerequisites.
- A student with an **ACT math sub-score of ≥ 28** , an **SAT math sub-score > 670** , an **Advanced Math Placement Test score of ≥ 290** , **or** an **ALEKS Test score of ≥ 76** has satisfied the QR requirement. *Depending on the student's major/minor, additional MATH/STAT courses may be required.*

Approved Courses for Quantitative Reasoning [GEQR]

BMMT 224 Solving Quantitative Problems in Technology [STS, COT, COTS 224]

BMMT 250 Personal Finance

COSC 106 Explorations in Robotics

DS 250 Introduction to Data Analysis for Business

ECON 201 Principles of Macroeconomics

ECON 202 Principles of Microeconomics

MATH 105 College Algebra

MATH 110 Mathematical Reasoning

MATH 112 Topics in Precalculus Mathematics (4)

MATH 118 Linear Models and Probability

MATH 119 Applied Calculus

MATH 120 Calculus I (4)

MATH 140 Applied Trigonometry and Calculus I for Tech. (4)

MATH 180 Mathematics for Elementary Teachers I [MATH 110E]

PHIL 181 Logic and Model Theory

PLSC 210 Introduction to Political Analysis

SOCL 250 Quantitative Applications in Sociology

STAT 170 Elementary Statistics [MATH 170]

SWRK 230 Quantitative Methods of the Helping Professions

TM 306 Quantitative Analysis of Sustainability Issues

A student's major/minor may require additional or specific quantitative reasoning course(s). *Students must choose courses in coordination with their advisors.* All prerequisite sequences must be completed with a "C" or above to advance to the next course in the sequence. To find out more information regarding math placement, go to emich.edu/math/placement/.

Knowledge of the Disciplines

Complete two courses from Arts, Humanities, Natural Sciences, & Social Sciences

Courses applicable to **Knowledge of the Disciplines** may also be listed within **Perspectives on a Diverse World**. Students may **NOT** use a single course to fulfill both General Education requirements.

Approved Courses for the Arts [GEKA]

(Select two courses with different prefixes)

AMA 240 Managing the Creative Process [CTAR 240]

ARTE 220 Learning in the Visual Arts [ART 220]

ARTH 100 Art Appreciation [ART 100]

ARTH 161 Survey of Non-Western Art [ART 109]

ARTH 162 Survey of Western Art I [ART 107]

ARTH 264 Modern Art

ARTH 267 History of Asian Art [ART 221]

ARTS 101 Introduction to Art [ART 101]

ARTS 103 Ceramics for Non-majors

ARTS 104 Graphic Design for Non-majors [ART 165]

ARTS 105 Photography for Non-majors [ART 168]

ARTS 106L3 Watercolor for Non-Majors [ARTS 106, ARTS 106L, ART 169, ART 169L]

ARTS 107 Oil Painting for Non-Majors

ARTS 109 Fibers for Non-Majors

ARTS 110 Printmaking for Non-Majors

ARTS 115 Sculpture for Non-Majors

CRTW 201 Introduction to Creative Writing

CTAR 100 Theatre Appreciation

CTAR 106 Introduction to the Performing Arts (Req. to DANC 106, MUSC 106)

CTAR 116 Musical Theatre Dance I (Req. to DANC 116)

CTAR 158 Fundamentals of Acting

CTAR 220 Teaching Through Theatre and Movement

CTAR 222 Drama and Play in Human Experience

CTAT 145 Introduction to Cinema Studies

DANC 100 Ballet Fundamentals for Non-Majors

DANC 102 Modern Dance Fundamentals

DANC 106 Introduction to the Performing Arts (Req. to CTAR & MUSC 106)

Please find the conclusion of this list on the following page.

Approved Courses for Arts, continued from the previous page.

DANC 113L1 Jazz I (DANC 101L1, DANC 101)
DANC 116 Musical Theatre Dance I (Eq. to CTAR 116)
MUED 220 Learning and Development in Music (MUSC 220)
MUSC 100 Music Theory Fundamentals
MUSC 105 Appreciating Jazz: America's Music
MUSC 106 Introduction to the Performing Arts (Eq. to DANC 106, CTAR 106)

MUSC 107 Music Appreciation
MUSC 108 World Music
SAG 175 Graphics for Simulation I

Approved "Arts" courses, no longer offered: CTAR 150L, CTAR 150L3

Approved Courses for the Humanities [GEKH]

(Select two courses with different prefixes)

AFC 246 Introduction to African Philosophy (Eq. to PHIL 246)
ARTH 151 Reason and Revolution *Honors* (ART 151) (Eq. to HIST 151)
CHL 137 Harry Potter: Literary Allusion, Children's Literature and Popular Culture (LITR 137)
CHL 138 Comics
CHL 207 Introduction to Children's Literature (LITR 207)
CHNE 121L5 OR 122L5 Beginning Chinese I OR II (5) (CHNE 121 OR 122)
CHNE 211L5 OR 212L5 Beginning Chinese III OR IV (5) (CHNE 211 OR 212)
CLAS 106 Rome and America *Honors* (6) (Eq. to LITR 106)
CTAO 210 Interpretive Reading
FRNH 121L5 OR FRNH 122L5 Beginning French (4) (FRNH 121 OR 122)
FRNH 221L5 OR FRNH 222L5 Intermediate French (Reading) (FRNH 221 OR 222)
FRNH 233L5 OR FRNH 234L5 Intermediate French Conversation, Composition & Grammar (FRNH 233 OR 234)
GERN 121L5 OR GERN 122L5 Beginning German (5) (GERN 121 OR 122)
GERN 221L5 OR GERN 222L5 Intermediate German Reading (GERN 221 OR 222)
GERN 233L5 OR GERN 234L5 Intermediate German Conversation, Composition & Grammar (GERN 233 OR 234)
HIST 101 Western Civilization to 1648
HIST 102 Western Civilization, 1648 to World War II
HIST 109 World History to 1500
HIST 151 Reason and Revolution *Honors* (Eq. to ARTH 151)
HIST 160 Reacting to the Past
HIST 204 Introduction to the History of Judaism
JPNE 121L5 OR JPNE 122L5 Beginning Japanese I OR II (5) (JPNE 121 OR 122)
JPNE 211L5 OR JPNE 212L5 Intermediate Japanese I OR II (5) (JPNE 211 OR 212)
KORN 121L5 OR KORN 122L5 Beginning Korean I OR II (5)
LITR 100 Introduction to Literature
LITR 101 Introduction to Fiction
LITR 102 Introduction to Poetry
LITR 103 Introduction to Drama
LITR 105 Mythology in Literature: Greek, Roman, and Norse
LITR 106 Rome and America *Honors* (6) (Eq. to CLAS 106)
LITR 160 African American Literature
LITR 161 Native American Literature
LITR 180 Rebels and Outsiders in Literature

LITR 200 Literary Studies for Literature Lovers
LITR 201 Introduction to Science Fiction
LITR 210 Introduction to Shakespeare
LITR 222 LGBT/Queer Literatures (Eq. to WGST 222)
LITR 240 Mysteries, Detective Fiction, and Crime Stories
LITR 251 The Bible as Literature
PHIL 100 Introduction to Philosophy
PHIL 110 Philosophies of Life
PHIL 120 Introduction to Critical Reasoning
PHIL 212 Philosophy of Art
PHIL 215 Philosophy of Religion
PHIL 216 Philosophy, Technology, and Digital Life
PHIL 220 Ethics
PHIL 221 Business Ethics
PHIL 223 Medical Ethics
PHIL 224 Ethics and Food
PHIL 225 Philosophy & Society
PHIL 226 Feminist Theory (Eq. to WGST 226)
PHIL 228 Global Ethics
PHIL 229 Environmental Ethics
PHIL 246 Introduction to African Philosophy (Eq. to AFC 246)
PHIL 260 Existentialism
PHIL 280 Philosophy and the Fundamentals of Scientific Reasoning
PHIL 292 Philosophy of Buddhism
PLSC 213 Introduction to Political Thought
RLST 100 The Comparative Study of Religion (HIST 100)
RLST 275 Gender, Sexuality, and Religion in the U.S. (Eq. to WGST 275)
SPNH 121L5 OR SPNH 122L5 Beginning Spanish I OR II (4) (SPNH 121 OR SPNH 122)
SPNH 233L5 OR SPNH 234L5 Intermediate Spanish I OR II (SPNH 201, 233 OR SPNH 202, 234)
WGST 222 LGBT/Queer Literatures (Eq. to LITR 222)
WGST 226 Feminist Theory (Eq. to PHIL 226)
WGST 275 Gender, Sexuality, and Religion in the U.S. (Eq. to RLST 275)

Approved "Humanities" courses, no longer offered: SPNH 221, SPNH 222

Approved Courses in Natural Sciences [GEKN]

(Select two courses or course combinations with different prefixes)

ASTR 204 Astronomical Investigations (1) **and** (ASTR 105 Exploration of the Universe (3) OR ASTR 205 Principles of Astronomy) (4)
BIO 105 Introductory Biology for Non-majors (4) (BIOL 105)
BIO 106 Biology from a Human Perspective (4)
BIO 110 Introductory Biology: Cells & Molecules (BIOL 110) **and** (BIO 111 Introduction to Biology Lab: Cells & Molecules OR BIO 112 Introduction to Biology I Lab, Small World)
BIO 120 Introductory Biology: Evolution & Ecology (3) **and** BIO 121 Introductory Biology Laboratory: Evolution & Ecology (2)
BIO 130 Introduction to Botany
BIO 140 Introduction to Zoology
BIOT 100 Life Science for Elementary Educators
CHEM 101 Chemistry for Elementary Teachers
CHEM 107 Better Living Through Chemistry **and** CHEM 108 How Chemistry Works (4)
CHEM 116 Chemistry and Society Lab (1) **and** (CHEM 111 The Chemistry of Us OR CHEM 115 Our Environment and Its Chemistry) (3)
CHEM 117 Fundamentals of Chemistry-Lecture **and** CHEM 118 Fundamentals of Chemistry-Laboratory (4)

CHEM 120 Fundamentals of Organic and Biochemistry (4)
CHEM 121 General Chemistry I **and** CHEM 122 General Chemistry I Lab (4)
ESSC 101 Introduction to Weather and Forecasting (4)
ESSC 108 and ESSC 109 Introduction to Earth Science & Lab (4)
ESSC 110 The Dynamic Earth System (4)
ESSC 114 Geology of the National Parks (4)
ESSC 120 Dinosaurs, Mammoths & Trilobites: An Introduction to Paleontology (4)
ESSC 202 Earth Science for Elementary Teachers
FERM 101 Introduction to Fermentation Science **and** (FERM 102 Introduction to Fermentation Science Lab OR CHEM 108 How Chemistry Works) (4)
PHY 101 Physical Science in the Arts (4)
PHY 221 Mechanics, Sound, and Heat (4)
PHY 223 Mechanics and Sound (5)
PSCI 100 Physical Science for Elementary Teachers (PHY 100)
PSCI 110 The Science of Everyday Life
PSY 101 General Psychology **and** PSY 103 General Psychology Lab (1) (PSY 102)

Approved Courses in Social Sciences [GEKS]

(Select two courses with different prefixes)

AFC 244 Dimensions of Racism
AFC 351 The Social Context of African American Health [AAS 351]
ANTH 135 Introduction to Cultural Anthropology
ANTH 150 Introductory Archaeology
COMM 225 Listening Behavior [CTAC 225]
COMM 226 Nonverbal Communication [CTAC 226]
COMM 227 Interpersonal Communication [CTAC 227]
CRM 200 Introduction to Crime and Justice
CTAT 130 Introduction to Digital Media
DTC 258 American Regional Foods
ECON 100 Introduction to Economics Problems and Policies
ECON 201 Principles of Macroeconomics
ECON 202 Principles of Microeconomics
GEOG 107 Introduction to Geography
HIST 123 The United States to 1877

HIST 124 The United States 1877 to the Present
HIST 231 Michigan in the Development of the United States
JRNL 213 Introduction to Journalism
LEAD 201L1 Introduction to Leadership
LING 201 An Introduction to Linguistics
PLSC 112 American Government
PLSC 113 American Government Honors
PLSC 202 State and Local Government
PLSC 212 Introduction to International Politics
PLSC 217 Introduction to Law and Courts
PURL 201 Public Relations and Public Responsibility [JRNL 201]
PURL 221 Fundamentals of Social Media
SOCL 105 Introductory Sociology
URP 115 The American City [GPLN 115]

Perspectives on a Diverse World

Complete one course in Global Awareness & one course in U.S. Diversity

Courses applicable to **Knowledge of the Disciplines** may also be listed within **Perspectives on a Diverse World**. Students may **NOT** use a single course to fulfill both General Education requirements.

Transfer and Veteran students must fulfill only one (1) approved course in either Global Awareness OR U.S. Diversity.

Approved Courses for Global Awareness [GEGA]

AFC 102 Introduction to African Civilization [AAS 102]
AFC 211 Black Caribbean World
AFC 244 Dimensions of Racism
AFC 313 Contemporary Africa: The Struggle and Prospects for Development [AAS 313]
AGIN 219 Around the World in 80 Years: Adult Development Across Culture (Eq. to SOCL 219) [GERT 219]
ANTH 135 Introduction to Cultural Anthropology
ANTH 212 Peoples and Cultures of China
ANTH 233 Cultures of Mesoamerica and the Caribbean
ARTH 161 Survey of Non-Western Art [ART 169]
ATM 135 Cultural Study of Dress
BIO 215 Plants and People
BIO 226 Global Ecology and the Environment
BMMT 170L1 Global Technologies [STS 170, STS 170LL, COT 170LL, COTS 170LL]
CASI 206 Culture and the Holocaust
CHL 209 Global Children's Literature
COMM 274 Intercultural Communication [CTAC 274]
COSC 105 Everyday Computing and Social Responsibility
CTAT 235 Global Cinema
DTC 358 Food and Culture
ECON 108 Introduction to the Global Economy
ENVI 105 Introduction to Environment and Society
ENVI 107 Environmental Science [ESSC 107, BIO 107]
ESSC 104 Earth Hazards
ESSC 105 Climate Change in Human Times
FRNH 111 Introduction to French and the French-Speaking World
GEOG 110 World Regions
GEOG 150 Thinking Sustainably
GERN 111 Introduction to German Language and German-Speaking Cultures
HIST 103 20th-Century Civilization

HIST 110 World History Since 1500
HIST 200 War, Culture and Society: A Global History
HIST 202 Religions in Conflict and Dialogue: Judaism, Christianity, and Islam (Eq. RLST 202)
HIST 203 Global History of Islam
HLAD 390 Poverty, Human Rights and Health (Eq. to PLSC 390)
IB 210 Fundamentals of Global Business
JPNE 111 Introduction to Japanese Language and Culture
JRNL 280 Global Journalism
LITR 171 Imagining the Holy Land
LITR 202 Current Events in World Literature
LITR 241 Global Images, Narrative Worlds
LITR 275 Global Environmental Literature
MUSC 108 World Music
PHIL 226 Feminist Theory (Eq. to WGST 226)
PHIL 228 Global Ethics
PHIL 291 Introduction to Asian Philosophy
PLSC 120 Global Issues
PLSC 211 Introduction to Comparative Government
PLSC 390 Poverty, Human Rights and Health (Eq. to HLAD 390)
RLST 202 Religions in Conflict and Dialogue: Judaism, Christianity, and Islam (Eq. HIST 202)
SET 102 World Wide Production: Global Impacts
SFCE 250 Ecojustice: An Introduction [SOFD 250]
SOCL 219 Around the World in 80 Years: Adult Development Across Culture (Eq. to AGIN 219)
SPNH 111 Introduction to Spanish Language and Hispanic Cultures
WGST 210 Gender in a Global Perspective
WGST 226 Feminist Theory (Eq. to PHIL 226)

Approved "Global Awareness" courses, no longer offered: BIO 107

Approved Courses for U.S. Diversity [GEUS]

AFC 101 Introduction to Africology and African American Studies [AAS 101]
AFC 232 Politics in the African American Experience [AAS 232]
AGIN 212 Introduction to Gerontology
ANTH 214 U.S. Racial and Cultural Minorities (Eq. to SOCL 214)
ANTH 237 Native North American Cultures
ARTH 165 Introduction to Contemporary Art
BMMT 205 Women in Business (Eq. to WGST 205)
CHL 208 Multicultural Children's Literature [LITR 208]
COMM 260 Gender Communication [CTAC 260] (Eq. to WGST 260)
COMM 265 Communication and the LGBTQ+ Community [CTAC 265] (Eq. to WGST 265)
COMM 275 Interracial/Interethnic Communication [CTAC 275]
CTAR 151 African American Theatre: An Introduction
DSTD 200 Introduction to Critical Disability Studies

HIST 115 What is an American?
HIST 116 Intro to American Indian History
HIST 205 American Immigration and Ethnic History
HIST 206 History of Health and Inequality in the United States
LEGA 221 American Immigration Process
LITR 160 African American Literature
LITR 161 Native American Literature
LITR 163 Jewish-American Literature and Culture
LITR 164 Introduction to Asian American Literature
LITR 203 (Mis)fits: Literature and Disability
LITR 222 LGBT/Queer Literatures (Eq. to WGST 222)
PLSC 215 Civil Rights and Liberties in a Diverse US
RLST 275 Gender, Sexuality, and Religion in the U.S. (Eq. to WGST 275)
Please find the conclusion of this list on the following page.

Approved Courses for U.S. Diversity, continued from the previous page
SOCL 214 U.S. Racial and Cultural Minorities (Eq. to ANTH 214)
SPGN 251 Introduction to Inclusion and Disability Studies in a Diverse Society
WGST 102 Gender Through the Prism of Prison
WGST 200 Introduction to Women's Studies
WGST 202 Introduction to Gender and Sexuality

WGST 205 Women in Business (Eq. to BMMT 205)
WGST 215 Gendered Sexual Violence
WGST 222 LGBT/Queer Literatures (Eq. to LITR 222)
WGST 260 Gender Communication (Eq. to COMM 260)
WGST 265 Communication and the LGBTQ+ Community (Eq. to COMM 265)
WGST 275 Gender, Sexuality, and Religion in the U.S. (Eq. to RLST 275)

Learning Beyond the Classroom

Satisfy one option in two of the following six groups.

All approved LBC experiences and courses must be affiliated with Eastern Michigan University. See catalog.emich.edu for additional details regarding approved Learning Beyond the Classroom courses and programs.

Transfer students must satisfy only one (1) of the six (6) groups. This requirement is waived for **Student Veterans**.

Group 1: Self and Well-Being

Participate in coached sports at EMU.

Participate in other related campus activities approved for LBC

Complete a credit-bearing course approved for Group 1: All courses with an L1 suffix

Group 2: Community Service, Citizenship, and Leadership

Participate in intensive leadership development experience sponsored by campus departments.

Serve on the executive board of a recognized student organization for one year.

Volunteer for community service with a recognized student organization and/or with departmental sponsorship (minimum 20 hours of volunteer service)

Work as a student employee in a campus leadership role

Participate in other related campus activities

Complete a credit-bearing course approved for LBC Group 2: All courses with an L2 suffix and CHL 451W.

Group 3: Cultural and Academic Activities and Events

Attend eight (8) cultural OR academic events sponsored by EMU (see emich.edu/calendar/)

Participate in a cultural, arts, OR entertainment production sponsored by EMU.

Complete a credit-bearing course approved for LBC Group 3: All courses with an L3 suffix.

Complete a credit-bearing U.S. Travel course approved for LBC Group 3 (See emich.edu/extended/travel/)

Group 4: Career and Professional Development

Participate in a non-credit-bearing exploration experience.

Significant involvement with a professional, discipline-based organization

Complete a credit-bearing course approved for LBC Group 4: All courses with an L4 suffix.

Group 5: International and Multicultural Experience

Study Abroad sponsored by EMU: All courses with a SABR prefix

Upon admittance to EMU, international students will have met the spirit of this option for their study abroad experiences.

Participate in planning and implementing a major international OR multicultural event at EMU.

Complete a credit-bearing course approved for LBC Group 5: All courses with an L5 suffix.

Complete a World Language Course approved for LBC in Group 5: Any CHNE, FRNH, GERN, JPNE, KORN, SPNH world language course, if not used to fulfill the Knowledge of the Disciplines – Humanities requirements, any second world language course, if not used to fulfill the Knowledge of the Disciplines – Humanities (GEKH) requirements.

Group 6: Undergraduate Research

Engage in original scholarship OR creative activity leading to the dissemination of work.

Participate in an approved research-design experience

Complete a credit-bearing course approved for LBC Group 6: All courses with an L6 suffix.

Note - Learning to learn during a pandemic, online and remotely, while simultaneously managing life, work, and so much more, is itself an impressive learning feat and represents a good deal of learning and skill-building; for this reason, a student who is registered during at least one COVID impacted semester (Winter 2020, Summer 2020, Fall 2020, and Winter 2021) will be considered as having completed one GELB category.

EMU FINANCIAL PLANNING GUIDE

STUDENT ACCOUNT ESTIMATED CHARGES

	FALL 2024	WINTER 2025
Tuition & Fees		
12-16 credit hours block tuition*	\$7,896.00	\$7,896.00
Food/Housing* (if applicable)	\$6,826.00	\$6,826.00
Registration Fee	\$55.00	\$55.00
New Student Fee	\$200.00	—
Orientation Fee	\$100.00	—
REC/IM Fee	\$50.00	\$50.00
Estimated bill for fall & winter =	A	B

Download and save this worksheet to enter your own information.

FINANCIAL AID AND SCHOLARSHIPS

	FALL 2024	WINTER 2025
Pell Grant (if applicable)		
Emerald/ETA Scholarship		
Direct Subsidized Loan		
Direct Unsubsidized Loan		
Other		
Other		
Total	C	D

SUMMARY

	FALL 2024	WINTER 2025
Estimated Charges	Total A	Total B
Total Aid and Scholarships -	Total C	Total D
Estimated Balance =		

Options for Balance

- Family Savings/out of pocket payment
- Parent Loan: apply at studentaid.gov beginning May 2024
- Private Loan: apply online at <https://emich.edu/finaid/types/loans/private-loans.php> beginning May 2024
- Payment Plan: Sign-up in July at <https://ebill.emich.edu> to divide the balance by 5 with no enrollment fee. OR sign-up in August and add \$35 enrollment fee and divide by 4. (There is also a 3 payment option with a fee.)

*Tuition, Food & Housing amounts reflect an estimate for the 2024-2025 academic year

You may use the online tuition/fee calculator to estimate before your eBill is available for you. Keep in mind many courses may have additional fees (online courses, 300-400 level courses, labs, etc.)

Go to: <https://emich.edu/sbs/basics/calculator.php>

For food/housing rates, go to: <https://www.emich.edu/residencelife/campusliving/rates.php>

FERPA Form

Family Educational Rights and Privacy Act

The Family Educational Rights and Privacy act of 1974 is a federal law designed to protect the privacy of current and former students' educational records and afford students certain rights with respect to their education records.



Scan the QR code above to submit the FERPA Form

Week at a Glance

	Sunday (U)	Monday (M)	Tuesday (T)	Wednesday (W)	Thursday (R)	Friday (F)	Saturday (S)
8:00am							
9:00am							
10:00am							
11:00am							
12:00pm							
1:00pm							
2:00pm							
3:00pm							
4:00pm							
5:00pm							

Plan Ahead

Notes:

- This plan is for your use only. Please meet with your academic advisor to create an official plan of study.
- EMU requires students to complete a minimum of **120** credits to graduate with a Bachelor's degree. Students should take this into account when planning out how many credits to take each semester.

Course Catalog

Find the undergraduate catalog at:
catalog.emich.edu

Select the 2024-2025 Undergraduate Catalog. Navigate to your major requirements and the General Education program requirements.

Final version of the General Education worksheet will be available beginning in July at catalog.emich.edu

My Major Advisor Contact Information

My Major
Major Advisor
Email Address

Year 1

Fall 2024 Course Credits

.....
.....
.....
.....
.....
.....

Winter 2025 Course Credits

.....
.....
.....
.....
.....
.....

Summer 2025 Course Credits

.....
.....

Course Credits

.....
.....

Year 2

Fall 2025 Course Credits

.....
.....
.....
.....
.....
.....

Winter 2026 Course Credits

.....
.....
.....
.....
.....
.....

Summer 2026 Course Credits

.....
.....

Course Credits

.....
.....

Year 3

Fall 2026	Course	Credits
.....
.....
.....
.....
.....
.....

Winter 2027	Course	Credits
.....
.....
.....
.....
.....
.....

Summer 2027	Course	Credits	Course	Credits
.....
.....

Year 4

Fall 2027	Course	Credits
.....
.....
.....
.....
.....
.....

Winter 2028	Course	Credits
.....
.....
.....
.....
.....
.....

Summer 2028	Course	Credits	Course	Credits
.....
.....

Year 5

Fall 2028	Course	Credits
.....
.....
.....
.....
.....
.....

Winter 2029	Course	Credits
.....
.....
.....
.....
.....
.....

Summer 2029	Course	Credits	Course	Credits
.....
.....

Semester Plan

Semester Goal(s)

Connections

Self-Reflection

Meet with a career coach from the UACDC to find a career path that aligns with your skills, passions and values.

Friends

My Personality

Study!

Days, Times, & Locations

Su

M

T

W

R

F

Sa

Mentor(s)

My Values

Involvement

Visit eaglesync.emich.edu for the campus-recognized student organizations, including club sports, fraternity and sorority life, major-related organizations and so many more!

My Skills

My Academic Advisor

Student Orgs To Join

My Dream Job

My Advising Office

Office Name & Location

Student Orgs I Am In

Well-being

Exercise and Health

Favorite Classes

Volunteering

For Fun!

Campus Life Coaches

Who Are We? ✕

The Campus Life Coaches are part of the Activities and Engagement team in Campus Life! We are there to help you optimize your time outside the classroom and make the most out of your EMU experience! By partnering with different organizations and campus resources, we create events that bring students together. Coaches are available for one-on-one appointments while also managing resources like the Involvement Calculator, a web-based tool that helps us track your interests in clubs and organizations, allowing us to find the best personalized fit for you!

Where can you find us?

We are located on the third floor of the Student Center (340E)!

Make an appointment to come see us or stop by during our open office hours. Check out the Find Your Fit page (QR code below) for details!

What are you hoping to join this year? ✕

A	G	O	A	G	S	E	E	G	M	R	E	G	A	
E	S	G	R	G	Y	N	A	T	O	B	E	O	W	STEM
O	L	G	A	E	E	A	E	S	L	U	M	L	E	GREEK LIFE
R	M	E	T	M	L	A	T	E	L	N	I	P	R	ART
G	P	G	R	T	I	R	P	A	R	P	N	L	W	CULTURE
L	R	P	L	G	O	N	L	R	R	M	A	T	U	ANIME
A	O	P	Y	P	T	O	G	S	E	E	A	I	A	SPORTS
N	N	F	S	S	U	R	S	G	G	T	S	P	S	GAMING
G	E	R	U	T	L	U	C	N	S	S	A	A	E	BOTANY
U	F	N	G	N	E	W	S	P	A	P	E	R	A	NEWSPAPER
A	E	A	G	R	E	E	K	L	I	F	E	U	G	LANGUAGE
G	S	E	R	T	R	P	T	U	R	P	E	N	R	
E	A	W	T	T	G	E	M	E	I	I	R	R	E	
C	I	O	O	N	P	R	G	L	M	E	W	C	I	

Not sure where to start? Check out the Eagle Sync Page with the QR code below to gain an idea of all the organizations currently active at EMU!

Want to learn more? Scan our QR Codes!

SCAN ME



Find Your Fit

SCAN ME



Eagle Sync

SCAN ME



Involvement Calculator

CAMPUS LIFE
COACHES

Advising Offices

COLLEGE OF ARTS AND SCIENCES (CAS)

Office Location: Student Center Room 120 (Francine Parker Advising Center)

Phone number: 734.487.4599

Email address: francineparker_advising@emich.edu

Website: emich.edu/cas-advising

COLLEGE OF BUSINESS (COB)

Office Location: 604 Hill Hall

Phone number: 734.487.2344

Email address: cob.undergraduate@emich.edu

Website: emich.edu/cob/student-resources/advising

COLLEGE OF EDUCATION (COE)

Office Location: 206 Porter Building

Phone number: 734.487.1416

Email address: coe_advising@emich.edu

Website: emich.edu/coe/students/undergraduates/advising

GAMEABOVE COLLEGE OF ENGINEERING AND TECHNOLOGY (CET)

Office Location: 201 Sill Hall

Phone number: 734.487.0354

Email address: cet_advising@emich.edu

Website: emich.edu/cet/student-services

COLLEGE OF HEALTH AND HUMAN SERVICES (CHHS)

Office Location: 214 Marshall

Phone number: 734.487.0918

Email address: chhsadvising@emich.edu

Website: emich.edu/chhs/advising

THE HONORS COLLEGE

Office Location: 511 West Forest (Trinity Building)

Phone number: 734.487.0341

Email address: emuhonors@emich.edu

Website: emich.edu/honors/advising

UNIVERSITY ADVISING AND CAREER DEVELOPMENT CENTER (UACDC)

Office Location: 200 McKenny Hall

Phone number: 734.487.0400

Email address: ea_acadadvising@emich.edu

Website: emich.edu/uacdc

Academic Resources

ACADEMIC PROJECTS CENTER (APC)

Office Location: 116 Halle Library | Phone number: 734.487.2543
Website: emich.edu/apc

DISABILITY RESOURCE CENTER (DRC)

Office Location: 246 Student Center | Phone number: 734.487.2470
Email address: drc@emich.edu | Website: emich.edu/drc

HALLE LIBRARY

Office Location: 955 W. Circle Dr | Phone number: 734.487.0020
Website: emich.edu/library

HOLMAN SUCCESS CENTER (HSC)

Office Location: G04 Halle Library | Phone number: 734.487.2133
Email address: success.center@emich.edu | Website: emich.edu/hsc

MATH PLACEMENT TEST

Office Location: 508 Pray Harold | Phone number: 734.487.4474
Email address: math_placement@emich.edu | Website: emich.edu/math/placement

MATH TUTORING CENTER

Office Location: 411 Pray-Harold | Phone number: 734.487.0938
Website: emich.edu/math/tutoring

OFFICE OF THE OMBUDS

Office Location: 248 Student Center | Phone number: 734.487.0074
Email address: emu_ombuds@emich.edu | Website: emich.edu/ombuds

STUDY ABROAD

Office Location: 242 Student Center | Phone number: 734.487.2424
Email address: programs.abroad@emich.edu | Website: emich.edu/study-abroad

UNIVERSITY WRITING CENTER (UWC)

Office Location: 109 Halle Library | Phone number: 734.487.0694
Email address: campus_communitywriting@emich.edu | Website: emich.edu/ccw

WORLD LANGUAGES PLACEMENT TEST

Office Location: 219 Alexander Hall | Phone number: 734.487.0130
Website: emich.edu/worldlanguages

Disability Resource Center

WHAT IS THE DRC?

The DRC works collaboratively with students, faculty and staff to create an accessible, sustainable, and inclusive educational environment for all students.

WHO CAN USE THE DRC?

The DRC is used by students, faculty, and staff of the University. We educate, advocate, and advise on all matters which involve accessibility for students to ensure equal access to the academic, social, and physical campus.

HOW CAN WE HELP?

Common accommodations include:

- Private testing locations
- Additional time for exams
- Extended deadlines on assignments
- Access to online text readers
- Accessible forms of textbooks & media
- Assistance with Emotional Support Animals
- And more

HOW TO REGISTER WITH THE DRC

- Step 1: Register with the DRC. Go to our website www.emich.edu/drc/index.php & click "Start the DRC Accommodation Process" button.
- Step 2: Fill out the intake questionnaire.
- Step 3: Submit documentation of your disability.
- Step 4: Schedule a meeting with a case manager.
- Step 5: Letter of Accommodation is created and emailed to the student.

Student Life Resources

CAMPUS LIFE

Office Location: 345 Student Center | Phone number: 734.487.3045
Email addresses: campuslife@emich.edu | studentorgs@emich.edu | fsl@emich.edu
Website: emich.edu/campuslife

CAMPUS SAFETY

Location: 1200 Oakwood St. | Website (Emergency Alerts): emich.edu/publicsafety/emo/channels/text

CAREER DEVELOPMENT CENTER

Office Location: 200 McKenny Hall | Phone number: 734.487.0400
Email address: career_services@emich.edu | Website: emich.edu/uacdc/career-development

CHILDREN'S INSTITUTE

Office Location: Fletcher Building, 1055 Cornell Road | Phone number: 734.487.2348
Email addresses: emu.ci@emich.edu | Website: emich.edu/childrens-institute

DEPARTMENT OF PUBLIC SAFETY (DPS)

Office Location: 1200 Oakwood Street | Phone number: 734.487.1222 (both emergent and non-emergent)
Email address: dps_questions@emich.edu | Website: emich.edu/publicsafety

DINING

Office Location: Suite 10, Lower Level Dining Commons | Phone number: 734.487.0418
Email address: dining_services@emich.edu | Website: dineoncampus.com/emu

DEAN OF STUDENTS

Office Location: 246B Student Center | Phone number: 734.487.1107
Email address: emu_deanofstudents@emich.edu | Website: emich.edu/dean-of-students

DIVERSITY, EQUITY, AND INCLUSION

Office Location: 346 Student Center | Phone number: 734.487.3118
Email address: dei_emu@emich.edu | Website: emich.edu/dei

Brotherhood and Sisterhood (BSHS):

Website: emich.edu/centers-programs/bhsh-scholars | Phone number: 734.487.8413

Center of Race & Ethnicity (CORE):

Website: emich.edu/centers-programs/core | Phone number: 734.487.2377
Email address: core_emu@emich.edu

LGBT Resource Center:

Website: emich.edu/centers-programs/lgbtrrc | Phone number: 734.487.4149
Email address: lgbtrc@emich.edu

Mentorship, Access, and Guidance in College (MAGIC):

Website: emich.edu/centers-programs/magic | Phone number: 734.487.3637
Email address: emu_magic@emich.edu

Student Life Resources

DIVERSITY, EQUITY & INCLUSION (CONT.)

Office Location: 346 Student Center | Phone number: 734.487.3118
Email address: dei_emu@emich.edu | Website: emich.edu/dei

Women's Resource Center:

Website: emich.edu/centers-programs/womens-resource-center | Phone number: 734.487.4282
Email address: wrc_emu@emich.edu

Title IX:

Office Location: Student Center Suite 250 | Phone number: 734.487.9126
Email address: emu_titleix_office@emich.edu | Website: emich.edu/title-nine
Coordinator: Matthew Gregory

EAGLE ONE CARD OFFICE

Office Location: 268 Student Center | Phone number: 734.487.3176
Email address: eagleonecard@emich.edu | Website: emich.edu/sbs/eagleone

EAGLE NUTRITION SERVICES

Office Location: 160 Rackham Hall | Phone number: 734.487.6572
Email address: EagleNutrition@emich.edu | Website: emich.edu/chhs/health-sciences/nutrition-services

EMU CREDIT UNION

Office Location: 1st floor, Student Center | Phone number: 734.487.1033
Email address: umcu@umcu.org | Website: emucu.org

HOUSING AND RESIDENCE LIFE

Office Location: 526 Ann Street (lower level Dining Commons) | Phone number: 734.487.1300
Email address: housing@emich.edu | Website: emich.edu/residencelife

IHA URGENT CARE @ EMU

Office Location: 1065 N. Huron River Dr. | Phone number: 734.896.4112
Website: ihacares.com/locations/mi/ypsilanti/iha-urgent-care-@-emu

IT HELP DESK

Office Location: 106 Halle Library (back right corner) | Phone numbers: 734.487.2120
Website: emich.edu/it/help/help_desk | Online Service Portal: itservice.emich.edu

MENTAL HEALTH SERVICES

Office Location: 1075 N. Huron River Dr.

Counseling & Psychological Services:

Website: emich.edu/caps | Phone number: 734.487.1118 | Email address: counseling.services@emich.edu

Community Behavioral Health Clinic:

Website: emich.edu/cbhc | Phone number: 734.487.4987 | Email address: psychclinic_admin@emich.edu

MILITARY AND VETERAN SERVICES

Office Location: 202 Pierce Hall | Phone number: 734.487.3119
Email address: veteran.services@emich.edu | Website: emich.edu/veterans

Student Life Resources

OFFICE OF INTERNATIONAL STUDENTS AND SCHOLARS (OISS)

Office Location: 240 Student Center | Phone number: 734.487.3116
Email address: oiss@emich.edu | Website: emich.edu/oiss

ORIENTATION & TRANSITION PROGRAMS

Office Location: 343 Student Center | Phone number: 734.487.1208
Email address: orientation@emich.edu | Website: emich.edu/orientation

PARK EMU

Office Location: 1200 Oakwood Street | Phone number: 734.217.4892
Email address: parkemuhelp@lazparking.com | Website: parkemu.com

RECREATION AND INTRAMURAL SPORTS (AND GYM FACILITIES - REC/IM)

Office Location: 100 Olds/Robb | Phone number: 734.487.1338
Email address: rec_im@emich.edu | Website: emich.edu/recim

SERVICE EMU

Office Location: 268 Student Center | Website: emich.edu/serviceemu

Financial Aid:

Phone number: 734.487.1048 | Email address: financial_aid@emich.edu | Website: emich.edu/finaid

Records and Registration:

Phone number: 734.487.4111 | Email address: registrar@emich.edu | Website: emich.edu/registrar

Student Business Services:

Phone number: 734.487.3335 | Website: emich.edu/sbs

STUDENT GOVERNMENT

Location: 342 Student Center | Phone number: 734.487.1470
Email: emu_studentgovernment@emich.edu | Website: emich.edu/student-government

SUSTAINABILITY @ EMU

Location: 303 D Mark Jefferson | Phone number: 734.487.6723
Email: emu_sustainability@emich.edu | Website: emich.edu/sustainability

SWOOP'S FOOD PANTRY

Office Location: 104 Pierce Hall | Phone number: 734.487.4173
Email address: swoops_pantry@emich.edu | Website: emich.edu/swoopspantry

UNIVERSITY BOOKSTORE

Office Location: 101 Student Center | Phone number: 734.487.2850
Email address: 0976mgr@follett.com | Website: emich.bkstr.com

General Resources

ACADEMIC CATALOG

*The academic catalog is where you will be able to find the requirements for your major or minor; catalogs change each year. To find the catalog you should follow until you complete your degree, select the year you **began** your program from the drop down menu of options.*

Website: catalog.emich.edu

ACTIVATING YOUR MY.EMICH ACCOUNT

To activate your account, you will need your NetID and EID. If you do not know your NetID and EID, call Records and Registration at 734.487.4111 or visit Service EMU. Visit emich.edu/it/passwords/netid/activate-account for more information. Your EMU email is found by logging in to your my.emich account, clicking the drop-down menu (top left), and selecting 'EMU Email'.

Website: my.emich.edu

CHANGE OR DECLARE MAJOR, MINOR, OR CONCENTRATION

If you decide to pick a new major or minor, or pick a major or minor for the first time, you will need to complete that change by filing it with the University. To do so, please fill out the following form:

Form: emich.edu/uacdc/forms/declaration

EBILL (ONLINE BILLING SYSTEM)

Your EBill is how you will pay your student account. Students are able to pay their bill in full, or sign up for a payment plan to spread out costs over the semester. For more information about your bill, visit emich.edu/sbs/billing-payments

Website: ebill.emich.edu

TRANSFER EQUIVALENCIES

Some students have taken college courses at another institution prior to attending EMU. To find out if these credits can apply to an EMU degree (and what they will count towards) visit the Transfer Equivalencies website.

Phone number: 734.487.8957 | **Website:** app.emich.edu/transfereq

Wellness Wheel

Office of Wellness and Community Responsibility



PHYSICAL WELLNESS

The ability to achieve, access and maintain a healthy body by good nutrition, regular exercise, adequate sleep, avoiding harmful habits, making informed decisions about health and seeking medical assistance when necessary.



INTELLECTUAL WELLNESS

A state in which your mind is engaged in lively interaction with the world around you. It involves continued learning, problem solving and creativity.



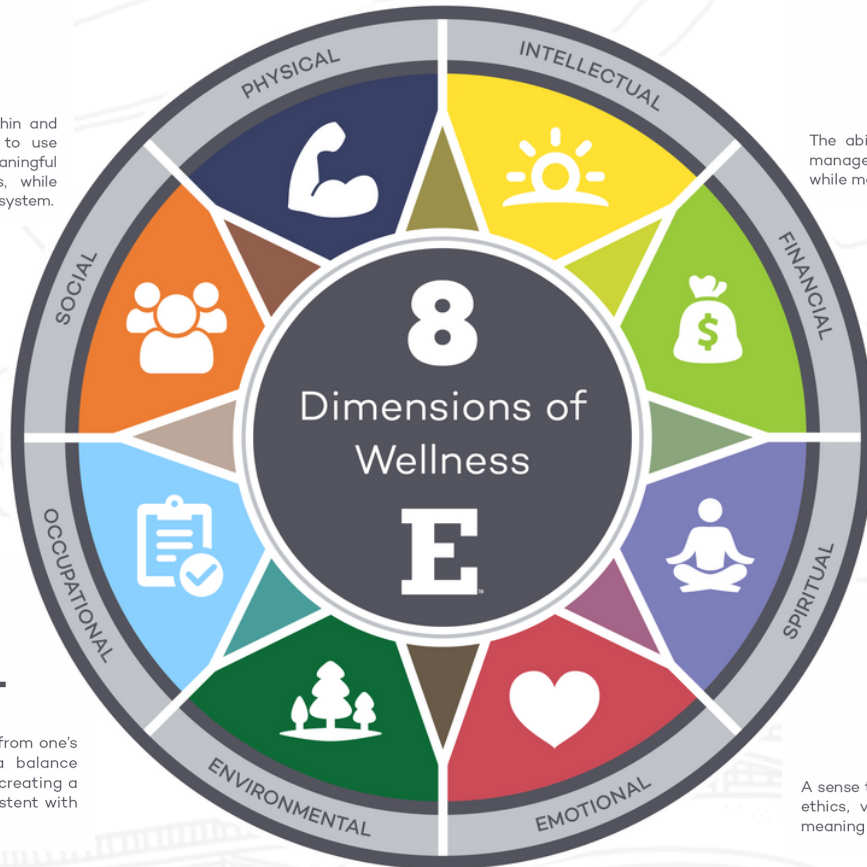
SOCIAL WELLNESS

The ability to relate well to others, both within and outside the family unit. It encourages us to use good communication skills, strive for meaningful relationships, respect ourselves and others, while establishing and becoming a part of a support system.



FINANCIAL WELLNESS

The ability to live within our means by learning to manage money, use self-discipline in money matters, while managing debt.



OCCUPATIONAL WELLNESS

The ability to achieve personal fulfillment from one's chosen career field while maintaining a balance between work and leisure time. It involves creating a supportive work environment that is consistent with one's goals, beliefs and personal values.



SPIRITUAL WELLNESS

A sense that life is meaningful and has a purpose; the ethics, values and morals that guide us and give meaning and direction to life.



ENVIRONMENTAL WELLNESS

The ability to lead a lifestyle that is respectful to our environment and minimizes any harm done to it. It requires learning about and protecting yourself against environmental hazards, along with caring for an appreciating nature.



EMOTIONAL WELLNESS

The ability to understand your own feelings, accept your limitations, achieve emotional stability and become comfortable with your emotions.



Diversity, Equity & Inclusion

DEI MISSION

The Office of Diversity, Equity, and Inclusion at Eastern Michigan University supports and empowers students from marginalized communities, provides intentional learning experiences, and challenges systems and structures that perpetuate inequities.

CONTACT INFORMATION

CENTER OF RACE & ETHNICITY

356 Student Center
734.487.2377
core_emu@emich.edu

LGBT RESOURCE CENTER

354 Student Center
734.487.4149
lgbtrc@emich.edu

WOMEN'S RESOURCE CENTER

358 Student Center
734.487.4282
wrc_emu@emich.edu

BROTHERHOOD & SISTERHOOD SCHOLARS

340C Student Center
734.487.3117
brotherhood_scholars@emich.edu
sisterhood_scholars@emich.edu

MAGIC

340N Student Center
734.487.3637
emu_magic@emich.edu

DIVERSITY, EQUITY & INCLUSION

Eastern Michigan University • 346 Student Center • Ypsilanti, Michigan 48197
734.487.3118 • emich.edu/dei

UNIVERSITY ADVISING & CAREER DEVELOPMENT CENTER

OUR SERVICES



**ACADEMIC
ADVISING**



**ONLINE
SERVICES**



**STUDENT
EMPLOYMENT**

CAREER COACHING

**CORPORATE
RELATIONS**



EASTERN MICHIGAN UNIVERSITY
**University Advising & Career
Development Center**

#WESUPPORTYOURGOALS

ACADEMIC ADVISING

**Exploratory
(Undeclared)**

General Education

Second Year Experience

**Individualized Studies
Program**

CAREER COACHING

Career Assessments

Major/Career Exploration

- Find your fit!

CORPORATE RELATIONS

Resume Creation

Interviewing Preparation

Job Search Strategies

Career Fairs and On-Campus Interviews

ONLINE RESOURCES

Interstride

a way to look for opportunities
internationally.

Handshake

Career Spots

Career Assessments

Virtual Appointments

U.Achieve

STUDENT EMPLOYMENT

Job Postings Handshake

Fall Job Fair

**CAREER
ADVISING**



**DROP IN
ADVISING**



**ADVISING
APPOINTMENT**



E|DINING

STAY CONNECTED
DOWNLOAD OUR APP



VIEW MENUS, NUTRITIONAL INFORMATION, HOURS, AND PROMOTIONS BY DOWNLOADING THE **DINE ON CAMPUS APP** OR SCANNING THE QR CODE!



MOBILE ORDERING With **TRANSACT**



HOW TO GET STARTED

- Download the Transact Mobile Ordering App
- Select Eastern Michigan University + Sign in with your Eagle Account
- Select Pick up Location
- Customize your meal
- Pay with your choice of payment
 - Meal Swipes, Flex or Credit Card



SCAN TO DOWNLOAD TRANSACT MOBILE ORDERING

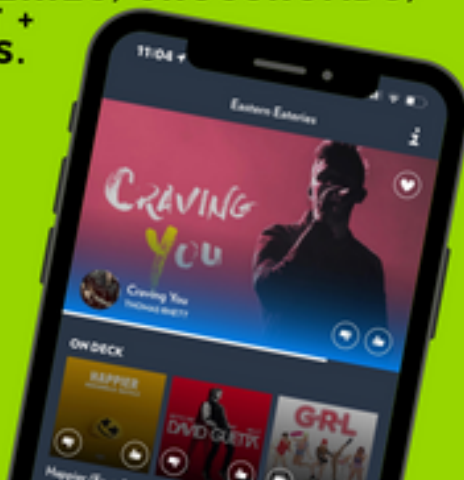
DOWNLOAD THE TRANSACT EACCOUNTS APP TO CHECK YOUR ACCOUNT BALANCE



ROCKBOT

REQUEST THE MUSIC YOU LOVE FROM YOUR PHONE. YES, REALLY.

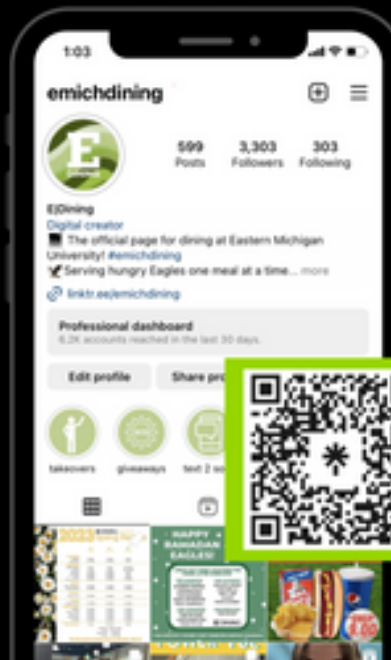
DOWNLOAD ROCKBOT TO PLAY, DISCOVER, AND SHARE THE MUSIC YOU LOVE IN THE STUDENT CENTER, EASTERN EATERIES, CROSSROADS, SHAKE SMART + THE COMMONS.



@EMICHDINING



FOLLOW YOUR FOOD



SIGN UP FOR OUR PROMOTIONS + EVENTS EMAIL NEWSLETTER!



EJ DINING IS HIRING... AMBASSADORS!

- EARN FLEX CASH
- FREEBIES INCLUDING FOOD + DINING SWAG
- ENHANCE YOUR RESUME
- PARTICIPATE IN EXCLUSIVE DINING OPPORTUNITIES
- NETWORK WITH FACULTY, STAFF + ALUMNI
- SO MUCH MORE!

NOW HIRING!

APPLY TODAY



- FREE MEAL EVERY 5 HOUR SHIFT WORKED
- ENJOY MOST HOLIDAY BREAKS OFF
- SHIFT PREMIUM FOR WORKING WEEKENDS
- FLEXIBLE SHIFTS AROUND YOUR SCHEDULE
- EARN BONUS FLEX EVERY MONTH
- CAREER ADVANCEMENT OPPORTUNITIES

EMAIL DS_SCHO@EMICH.EDU, TEXT "EMU" TO 75000, OR
SCAN THE QR CODE TO APPLY!



SCAN TO APPLY



- EMU FOOD MAP -



WELCOME HOME

2024 - 2025

Downing layout



Walton/Putnam layout



Downing lounge



Walton/Putnam lounge



BRAND NEW HALLS

A 400-bed apartment-style residence hall will be a stone's throw from the Student Center and will overlook the beautiful koi pond on the north side of campus. The second new residence hall will replace Westview Apartments. This hall will house 300 occupants and will be located on the west side of campus near the Athletics complex, which is just a short walk away from the Halle Library and Shake Smart.

NEW REC AREA

With the new residence halls underway comes newly constructed outdoor basketball and volleyball courts. These courts are already available to the students on campus and are located right outside the Rec/IM building. These courts also align with EMU's goal of supporting the health and well-being of its students. Getting active is also a great stress reliever and helps boost your mood!

UPDATE EVERY HALL

All residence halls and apartments will include WiFi, air conditioning, and room layouts that have been influenced directly by student feedback. These renovations provide quality and affordable housing that every one of our students deserve. On average, the residence halls are 57 years old, so the campus as a whole will become modernized with this overhaul. *Excluding Wise Hall, which was renovated in 2017



Want more information or would like to provide feedback? Visit us at emich.edu/welcome-home-2025 or scan the QR code.

#LIVE LIKE AN EAGLE

6 RESIDENCE HALLS

Honors Residence Hall

WALTON SELLERS WISE PHELPS PUTNAM DOWNING

Living on campus is required for all new students, unless they are commuting from their primary guardian's permanent address within a 50 mile radius of campus.

GREAT AMENITIES

All utilities including WiFi, 10 minute walks to any building. Safety, service, and support. Laundry facilities, lounge, and study spaces. Front desk supplies and games.

RESOURCES

All halls are fully staffed with complex directors, resident advisors, and office managers. Housing employs 200+ students 100+ monthly programs. Staff is on call 24/7 all year round.

THEME COMMUNITIES

TRIO/SSS
Spectrum (LGBTQIA+)
Honors
Brotherhood
Sisterhood

APPLY FOR HOUSING

<https://www.emich.edu/residencelife/applications/first-year>



APPLICATION INFO

Required \$150 prepayment Roommate requests honored through posted deadlines Rooms are based on availability and eligibility duty year-round

FALL 2024 NEW STUDENT HOUSING APPLICATION OPENS JANUARY 24TH

HELPFUL SUPPORT SERVICES

Department of Public Safety, IHA Primary Care Center Counseling & Psychological Services, Office of Nutritional Services, & Walk around after dark with SEEUS.

TRAINING AT THE REC/IM

2 swimming pools
Basketball courts
Weightlifting and aerobics
Virtual group fitness with Wellbeats
E-sports program

DYNAMIC DINING SERVICES

20+ restaurant options
Meal plans included with housing
All-you-care-to-eat Commons, National brand partners, Mindful allergen ID program, & Vegetarian and vegan options.

CONTACT US

📍 526 Ann St. Ypsilanti, MI 48197

☎ 734-487-1300

✉ housing@emich.edu

f [EMUHousingandResidenceLife](#)

🎵 @emuhousing



**LEARN
MORE
HERE**



The EMU Police Department

As sworn officers, EMU police are empowered to investigate, arrest, or take other necessary action to address any criminal or civil infraction. EMU officers work closely with local and state agencies. Our highly trained and professional police department is available 24/7, 365 days a year.

EMU Police Dispatch: 734.487.1222

www.emich.edu/police

Some of Our Programs and Services

EMERGENCY TEXT MESSAGE ALERTS

Sign up to receive a text message if a major University emergency occurs or if there is an unexpected closure.



SEEUS

Student Eyes and Ears for University Safety- provides free escorts to persons walking on-campus after dark.

Contact SEEUS at
734.487.3387
(734.48.SEEUS)



SELF DEFENSE CLASSES

This introductory 6 week course is only \$10. It covers risk awareness and avoidance, as well as, basic hands on self-defense techniques.



ACTIVE SHOOTER RESPONSE TRAINING

This free training provides helpful information on what you can do in an active shooter event.



UNLEASH

your green

with  EMUCU's
Student Account Package



OPEN AN ACCOUNT WITH
EMUCU TO RECEIVE A
SWEATSHIRT**



SAVINGS ACCOUNT* – This account gives you access to all the benefits EMUCU offers. With just a \$5 minimum, start growing your money to reach your financial goals.



BASIC CHECKING*/DEBIT ACCOUNT – This account is everything you need for everyday spending, including your free Block E debit card and overdraft protection options**. Plus, whether you're on campus or back home for break, EMUCU's mobile banking app makes staying on top of your account easy!



LOW RATE CREDIT CARD† – Building credit now is essential for life after college. Credit helps you buy a car, get a job, rent an apartment, and more. With a great rate as low as 8.99% APR and no annual fee†, this is the perfect credit card for college students.



FINANCIAL WELLNESS WORKSHOPS – EMUCU's free Financial Wellness Workshops are designed to help students learn valuable money management skills. Enjoy free access to online and in-person workshops year-round, as well as one-on-one financial counseling!

**START
TODAY**

Stop by the EMUCU
branch to open your
student account and receive
your exclusive sweatshirt!

Federally Insured by the NCUA.

* A savings account is required to open a debit/checking account. The minimum balance required to open a savings account is \$5.00. The current savings account Annual Percentage Yield of 0.05% is a variable rate and may change at any time.

† Offer subject to credit approval. APR as low as 8.99%; maximum APR is 18.99%, based on your credit worthiness. Additional limitations, terms, and conditions apply, and are subject to change without notice. The following transaction fees apply: 1% for foreign transactions, \$2 for non-EMUCU/non-Co-Op ATM transactions and \$2 for each overdraft transfer.

**A \$30 fee may be imposed for covering overdrafts created by check, ACH, in-person withdrawal, ATM withdrawal, or other electronic means. Whether your overdrafts will be paid is discretionary, and we reserve the right not to pay if your account is not in good standing.

***Must be an EMU student to be eligible to receive a free sweatshirt. Offer valid while supplies last. Checking account must be open and in good standing at the time sweatshirt is mailed out. Sweatshirt will be mailed out within 4-6 weeks of account opening.



BE ACTIVE AND MEET YOUR WELLNESS GOALS AT THE REC!

We strive to provide the campus and surrounding community with quality recreational facilities and activities which promote a healthy lifestyle through participation in exercise, individual and team sports, educational programs, and recreational events.



Looking For a job?

We are one of the largest employers of students across campus. Visit our website to fill out an application.



Convenient Location

Located between the Student Center and Pray Harrold, we are just a short walk from most of the apartments on campus.

WHAT'S AT THE REC?

- ✓ Group Fitness Classes
- ✓ Indoor Running Track
- ✓ Intramural Sports
- ✓ 70+ Exercise Machines
- ✓ Billiards and Ping-Pong
- ✓ Basketball Courts
- ✓ Lounge Study Space
- ✓ Swimming
- ✓ Locker Rooms
- ✓ Volleyball
- ✓ Free Weights
- ✓ Esports Gaming
- ✓ Racquetball
- ✓ ..and Much More!

CONTACT US

110 Olds Robb
Ypsilanti, MI 48197

 @emu_recim

 @recimemu

(734) 487-1338

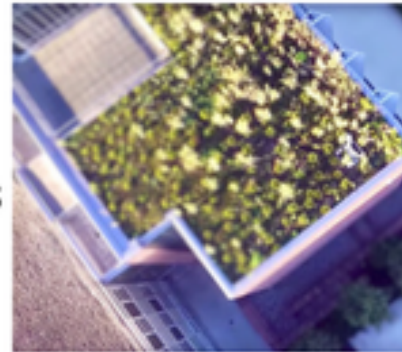
www.emich.edu/recim

SUSTAINABILITY

@ EMU



The green roof atop the Mark Jefferson Science Complex helps insulate the building.



EMU is nationally recognized with a Bronze STARS rating for sustainability.

Newly-renovated Strong Hall was finished with locally-sourced renewable materials and resources.

Bioswales, retention ponds, and rain gardens were built into campus landscaping to filter storm water runoff.



The Community Giving Garden is open to the entire campus community!



Dining Services has increased the selection of plant-based dining choices and engages in pre- and post-consumer composting.

Learn more about EMU sustainability and the President's Commission on Sustainability
<https://www.emich.edu/sustainability/>



SUSTAINABLE BUILDINGS ON THE EMU CAMPUS

Pray-Harrold

- LEED Certified
- Vines on the southeast and southwest sides absorb heat from the sun
- Recycled materials used in the ceiling tiles and carpeting



Mark Jefferson Science Complex

- LEED Gold Certified
- Uses energy efficient solar management
- Consists of materials that are low-emitting, or recycled content

Strong Hall

- LEED Certified
- Finish materials sourced locally from renewable sources
- High performance exterior wall system reduces the energy required to heat or cool the building



EMU Campus

- EMU is powered almost entirely without coal or oil
- Energy-saving solar panels power bus stop lighting
- Recycling bins in most campus buildings
- Campus landscaping uses native Michigan flora
- EMU has earned a Bronze STARS rating for sustainability



Scan for more on EMU Sustainability
and the President's Commission on
Sustainability



EASTERN MICHIGAN ALUMNI

PRESENTS

STUDENTS

ALUMNI LEGACY SCHOLARSHIP

Normalites, Hurons, and Eagles have gathered over the years to share in the traditions and rich history of Eastern Michigan University. Traditions not only pass through each graduating class, but strengthened through numerous generations --continuing a family legacy. In 1970, a scholarship was established to honor the children and grandchildren of EMU alumni.

Applications and awards are submitted and awarded on an annual basis. For dates, deadlines and details, please scan the QR code below.



PARENTS

ALUMNI EVENTS AND INFORMATION

We want our connection to you to last for life. For all parents, family and friends who are alumni - we would love to keep in touch with you! We share things like:

- Exclusive Events
- Campus Updates
- Alumni News
- Volunteer Opportunities

Please fill out our short "Update Form" so we have accurate information on file for you by scanning the QR code below.

ALUMNI EVENTS



UPDATE FORM





Hello and welcome to campus! Below, you will find all of the information you need regarding parking on campus, including permit types, prices, and policies. This is a summary of the information available at www.parkemu.com. If you have any questions about anything in this document or on our website, please feel free to reach out by phone at (734) 217-4892 or via email at ParkEMUHelp@LAZParking.com. Our office at 1200 Oakwood Street (Public Safety Police Building) is also open Monday through Friday, 8:30am – 4:30pm.

Important Links

- Winter 2024 Student Permit Page: <https://www.parkemu.com/permits/student-permits-winter-2024/>
- Frequently Asked Questions: www.parkemu.com/resources/frequently-asked-questions
- Citation Payment/Appeals Portal: www.parkemu.rmcpay.com
- Campus Parking Map: www.parkemu.com/maps

Who is ParkEMU?

ParkEMU is a branch of LAZ Parking, a nationwide parking company based in Hartford, CT with over 4 decades of experience in the parking industry. LAZ has locations in 31 states, with operations in various segments, such as hospitality/valet, medical/hospital, government/municipal, event parking, residential/buildings, campus, and more.

In LAZ's brief time as part of the EMU community, we have made, and continue to make, several improvements to the EMU parking experience:

- Foundational and aesthetic lot renovations.
- New, clearer lot signs across the campus.
- The installation of new, cashless gated access machines across campus.
- Flexible parking solutions, such as Text-to-Park and Overnight passes.
- Community donations.

Parking @ EMU

All parking permits are semester based and will need to be renewed every semester you will be parking on campus. If you do not have a permit and wish to park on campus, guest meters, any of our five cashless guest lots, or the signed Text-to-Park lots must be utilized. Guest parking may be a more cost-effective option for those who will only be parking on campus for a few hours a week.

More information on guest parking can be found on the [ParkEMU website](http://www.parkemu.com).

Individuals without valid permits who do not utilize these guest parking options will be eligible to receive a citation if parked on campus. **There is no free parking on campus.**

Parking Permits

Student permits come in five (5) variations. These permits are semester-based and cannot be billed to/deducted from student accounts. All prices and parking access information for permits can be found on the [ParkEMU website](#). The permits available to students are as follows:

1. Commuter: for students who primarily drive to campus for classes and do not need to leave their vehicle on campus overnight.
2. Residence Hall: for students who live on campus in any of the residence halls/dorms.
3. Brown/Munson: for students living in Brown/Munson housing.
4. Cornell: for students living in the Cornell apartments.
5. 601: for students living in the 601 apartments.

Winter 2024 Parking

Students interested in registering for a parking permit for the Winter 2024 semester should go to the [ParkEMU website](#). Once at Student Permits (Winter 2024) screen, select the permit type you would like to purchase (one of the five mentioned above).

For the Winter semester, ParkEMU offers Standard and Extended permits for students. Both variations will be available for purchase on the ParkEMU website. Standard Permits are valid from date of purchase to 11:59pm on April 30th, 2024. Extended Permits are valid from date of purchase to 11:59pm on May 31st, 2024.

In case you need any assistance purchasing a permit, our office has created step-by-step instructions, as well as a tutorial video to help guide you through the new permit registration and permit adjustment processes. Click the links below to access these instructions:

- [Permit Registration Instructions \(PDF\)](#)
- [Permit Registration Instructions \(Video\)](#)
- [License Plate Adjustment Instructions \(PDF\)](#)
- [License Plate Adjustment Instructions \(Video\)](#)

Please note that permits are non-transferable and are only valid for the permit holder listed on the permit. Permits are allowed to have up to 2 license plates added to the permit at any one time. The permit holder can change/update their license plates at any time, and it is the sole responsibility of the permit holder to update and ensure accuracy of the license plates being added to the permit. Also be advised that if both vehicles/license plates are on campus at the same time, these vehicles will be subject to a citation for sharing a permit.

ParkEMU Refund Policy

ParkEMU permits are semester-based products, therefore prices do not change based on the date of purchase, and no refund will be given if the permit is not actively used for the entire semester.

Students who have purchased a permit and withdraw from classes may receive a refund for their permit if the following criteria is met:

- The student has completely withdrawn from all classes by the University's total withdraw date.
- This withdraw must be confirmed by the University.
- The student submits an email requesting the refund. This email must contain their permit confirmation number. Please note that the confirmation number will be included in the subject of the email received by the student after registering their permit.

Any student who holds a permit for one calendar week after purchase and requests a subsequent refund will receive their funds minus a \$25 reimbursement fee.

In the event the incorrect permit has been purchased, please reach out to our office at ParkEMUHelp@LAZParking.com to receive information on how to move forward with getting the proper permit. _____

Handicap Parking Policies

Parkers who have purchased an on-campus parking permit and have a valid handicap parking placard obtained from the Secretary of State office can park in any handicapped parking spot on campus inside a permitted lot, regardless of lot type. This applies only to the handicap parking spots within the permitted lots and does not include handicap parking at metered spaces or within the guest lots (unless the individual obtains an [access card](#)). Individuals that wish to utilize the handicap metered or guest lot spaces can do so but will also need to pay the applicable rates.

Individuals who have the yellow "Free Parking" sticker in conjunction with a handicap placard issued by Michigan's Secretary of State Office will be provided complimentary parking and will be granted access to all paid lots via an RFID access card at no charge. Individuals who do not have the "Free Parking" yellow sticker issued by the Secretary of State Office are responsible for paying applicable parking fees.

More information on handicap parking policies can be found on the [ParkEMU website](#).

Citation Appeal Process

If you feel that you have received a citation in error, you can appeal the citation within 14 days using the online appeals portal: www.parkemu.rmcpay.com. During the submission process, you will be able to include images and other files relevant to the citation. Once the appeal has been submitted, the EMU Adjudicator will review your case and grant or deny the citation appeal after careful consideration.

The only citations that cannot be appealed online are those for parking in a Handicap space. These citations must be appealed by providing our office with proof you have a valid Handicap placard. Once this information has been confirmed, the Adjudicator will be able to authorize a citation reduction to \$28 for failing to display the placard.

If you any questions or concerns about any of the above information, please feel free to reach out via email (ParkEMUHelp@LAZParking.com) or phone (734-217-4892) Monday through Friday 8:30am to 4:30pm.

Acronyms

CGL:

Connect Group Leader, the student leaders for the EMU Connect program

DEI:

Diversity, Equity, and Inclusion; an office that supports and empowers students from marginalized communities comprised of the Lesbian, Gay, Bisexual, and Transgender (LGBT) Resource Center, Center of Race & Ethnicity (CORE), the Women's Resource Center (WRC), Brotherhood and Sisterhood Scholars, and the Mentorship, Access, and Guidance in College (MAGIC) program

DPS:

Department of Public Safety, a department comprised of EMU's police force, emergency management systems, and environmental health & safety

DRC:

Disability Resource Center, EMU's center that works collaboratively with students, faculty, and staff to create an accessible, sustainable, and inclusive educational environment for all students

FAFSA:

Free Application for Federal Student Aid; studentaid.gov

FSL:

Fraternity and Sorority Life; the community of Greek Letter organizations

FTIAC (Students):

First Time In Any College; commonly used to refer to first year students

OGL:

Orientation Group Leader, the student leaders for SOAR Days

O-team:

The group of individuals overseeing CGLs at EMU Connect

SOAR:

Student Orientation Advising & Registration.

RA:

Resident Advisors, the students who live in the residence halls and apartments and assist students in their adjustment to college life

Academic Terms

Account Hold:

Holds on a student's account can prevent registration, graduation, and transcript production; hold types can be financial, judicial, or others.

Add/Drop:

The process of adding or dropping classes from your schedule. The last day to add classes is about a week into the semester usually, the last day to drop a class with no penalty is usually 2 weeks into the semester.

Advising:

Assistance with the process of planning what courses need to be taken and their sequence in order to reach your academic goals.

Audit (U.Achieve):

U.Achieve is a tool that is available to you on your my.emich.edu account. It allows you to stay up to date on your progress towards graduation.

Canvas:

Our online course management system. This system allows students access to course files, syllabi, grades, readings, and much more.

Completion Rate:

The number of EMU credits a student has earned divided by the number of EMU credits attempted.

Classification:

How the university determines a student's class standing.

Freshmen: 0-24 credit hours | **Sophomore:** 25-55 credit hours

Junior: 56-84 credit hours | **Senior:** 85+ credit hours

Commencement:

A graduation ceremony where students officially receive their degrees typically held at the end of the academic term.

Credit hour:

A unit of measure for a program based on the approximate number of hours in a classroom per week. Credits are earned upon the successful completion of a course and used to calculate a G.P.A.

Department:

A division of a college in which faculty are assigned to a particular academic major.

ebill:

EMU's online billing system where students can view their bill for the semester and set up both payment plans as well as authorized users (for family and friends).

EID:

Your EID is your student identification number.

Academic Terms

Full-time Student:

Students who are taking at least 12 credit hours in the Winter and Fall semester.

Grade Point Average (G.P.A.):

EMU uses a 4.0 scale for G.P.A.s. For an online G.P.A. calculator, visit: emich.edu/uacdc/forms/gpacalculator

Learning Beyond the Classroom (LBC):

A piece of our General Education program that is meant to be done outside of class; emich.edu/gened/lbc

Major:

An academic course of study with specific program requirements within a department.

Minor:

A set of courses in a secondary area from a student's major. Minors are not required for all students, based on how many credit hours their major program covers.

NetID:

Your NetID is the beginning part of your EMU email. It is used to log into your email and my.emich.edu account.

Part-time Student:

Undergraduate students registered for 6-11 credits in a semester.

Prerequisite:

A specific course that must be completed before another course.

Registration:

The procedure by which students choose courses each academic term. Registration typically occurs about halfway through the current academic term.

Semester:

The academic calendar is broken into 15 week increments; EMU has three semesters: Fall, Winter, and Summer, each totaling 15 weeks of instructional time.

Starfish:

A student success tool that aides in the communication among students and faculty about academic resources.

Student portal / my.emich:

EMU's system for students to register for classes, review final grades, view the program auditing system, as well as access payroll information for on-campus job.

Syllabus:

A course outline specific to each class a student will take. This document includes important dates (such as due dates or exam dates), instructor contact information, course materials needed, as well as expectations.

Withdraw:

A complete drop of either a course or semester of courses.

Next Steps



Apply

for financial aid online by completing your FAFSA at studentaid.gov. This is the only way to receive federal and state student aid such as grants, work-study awards, and/or student loans. Financial aid awards are made on a first-come, first-served basis. You should complete this as soon as possible.



Reserve

your residence hall room at emich.edu/residencelife/applications



Arrange

for EMU to receive your final high school transcript (showing your graduation date) immediately upon high school graduation. This must be done to receive financial aid and before attending classes. More information on sending transcripts to EMU can be found at emich.edu/registrar/transcripts



Activate

your Eagle One Card at emueagleone.com



Check

your my.emich email! It is the **OFFICIAL** method of communication at EMU.



Complete

Online Orientation by returning to the portal after attending your SOAR or academic advising, and again in July for the pre-EMU Connect modules.



Get Ready

for EMU Connect by checking emich.edu/orientation for updates and following EMU's social media accounts!

Notes

A series of horizontal dotted lines for writing notes, arranged in a regular grid pattern across the page.

Social Media



/EasternMichU



@easternmichigan
@emuorientation



@EasternMichU
@EMU_Swoop



/easternmichigan

Campus Map

Need help navigating campus?
Scan the QR code and view the
campus map for help!

