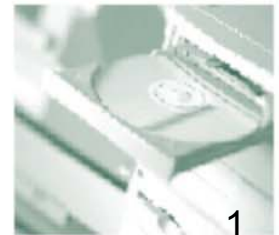




# Continuing Education:

Credit and Non-Credit:

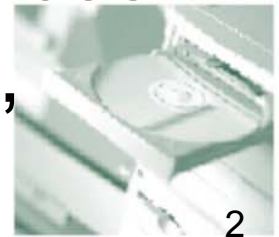
- Online
- Weekend
- Off-Campus





# Mission of Continuing Education

Continuing Education provides leadership to the campus in extending Eastern Michigan University to its communities. We serve students and faculty by providing learning experiences in convenient and innovative formats, locations, and delivery systems.





# Oversight of Continuing Education

- Associate Vice President for Extended Programs
- The Provost and Vice President for Academic Affairs

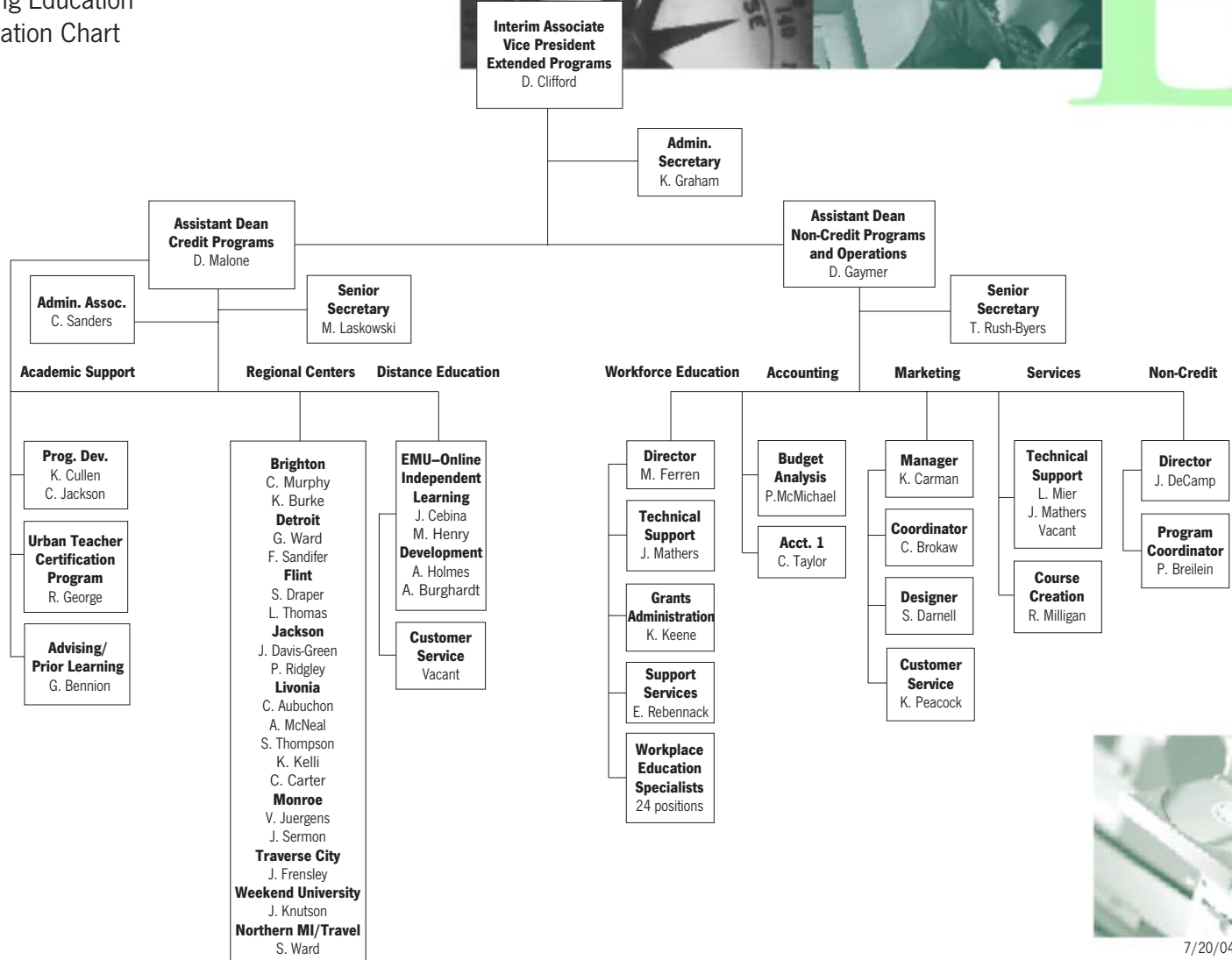
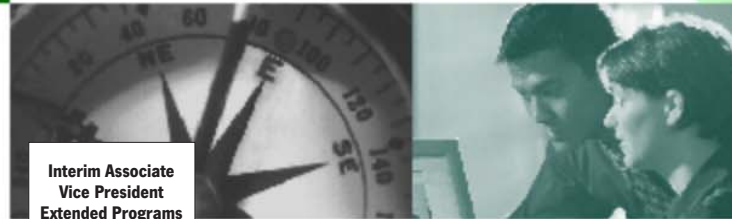
## Continuing Education Advisory Council

- The Council is an AAUP contractually required committee
- Two Department Heads, Twelve Faculty Members (11 Department representatives & 1 Faculty Council representative)
- Provides input on instructional matters: Programs and courses, potential markets, use of resources



EASTERN MICHIGAN UNIVERSITY

Continuing Education Organization Chart

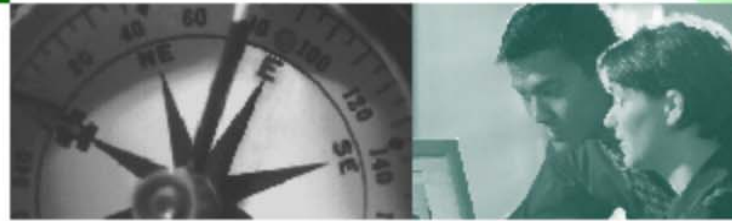




# Continuing Education

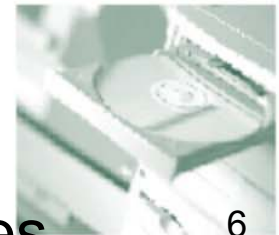
- Centralized/Decentralized Organizational Model
- Self-funded unit
- Located in Academic Affairs
- Forty-eight full programs offered off-campus or online
- Seventy staff members
- 66,808 SCH FY2004
- Goal for FY2005: 69,795 SCH

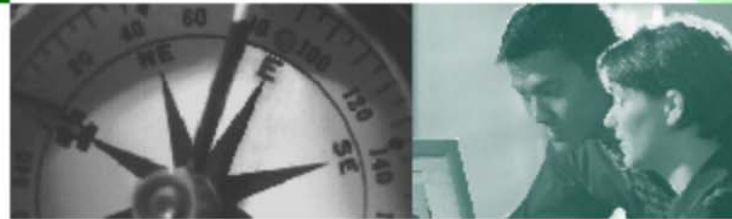




# Key Activities of Continuing Education

- Deliver off-campus & online academic credit courses
- Partner with departments for non-credit activities & conference management
- Develop and manage off-campus facilities
- Facilitate outreach and partnerships
- Provide program planning and packaging
- Marketing research and delivery strategy
- Marketing Communication
- Faculty and student support and services
- Serve as an incubator for new programs/activities





# Locations, Formats and Delivery Systems

- Regional Offices
  - Brighton
  - Detroit
  - Livonia
  - Flint
  - Jackson
  - Monroe
  - Traverse City
- Washtenaw County
- Distance Education
- Corporate and University Partnerships



# Undergraduate and Certificate Programs Offered Through CE



Brighton	810.225.0361
Detroit	313.342.2731
Flint	810.762.0303
Grand Rapids	810.762.0303
Jackson	517.787.7265
Livonia	877.818.4368
Monroe	734.384.6090
Traverse City	877.368.8289
Washtenaw Co./ Weekend University	734.487.0407
Online	734.487.1081

### Undergraduate Programs in:

Applied Technology				■						
Construction Management										
Dietetics										■
Health Education (minor)										
Nursing (R.N./B.S.N. completion)	■ 2	■			■		■			
Public Safety Administration		■								
Social Work Segue							■ 2	■ 2		
Teacher Certification Segue	■ 2				■ 2			■ 2		
Technology Management										■ 1
Urban Teacher Certification Program		■	■							

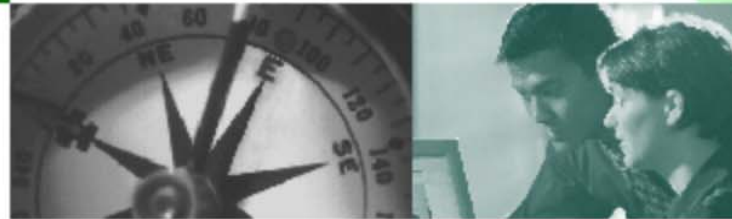
### Certificates/Endorsements in:

Business Administration (graduate)										
Early Childhood Education Endorsement	■									
Educational Media and Technology (graduate)										■
Health Administration (graduate)	■									
Historic Preservation (graduate)									■	
Human Resource Management (graduate)									■	
Information Security (graduate)									■	
Organizational Development (graduate)									■	
Public Administration (graduate)									■ 4	
Special Education (EI and CI endorsement sequence)				■						
Special Education (learning disabilities endorsement sequence)	■									
Special Education Supervisor/Director Approval Program										■
Supply Chain Management (graduate)									■	
Teaching English as a Second Language										■

■ 1 Core course sequence only; ■ 2 Beginning Fall 2004; ■ 3 Beginning Winter 2005; ■ 4 Four certificates available - visit: [www.ce.emich.edu](http://www.ce.emich.edu)



# Graduate Programs Offered Through CE



	Brighton 810.225.0361	Detroit 313.342.2731	Flint 810.762.0303	Grand Rapids 810.762.0303	Jackson 517.787.7265	Livonia 877.818.4368	Monroe 734.384.6090	Traverse City 877.368.8289	Washtenaw Co./ Weekend University 734.487.0407	Online 734.487.1081
--	--------------------------	-------------------------	-----------------------	------------------------------	-------------------------	-------------------------	------------------------	-------------------------------	--	------------------------

## Doctoral Degree in:

Educational Leadership				■						
------------------------	--	--	--	---	--	--	--	--	--	--

## Master's Degree in:

Business Administration						■				
Clinical Research Administration	■ 2									
Common Learnings (curriculum generalist)	■	■	■		■	■				
Construction Management						■				
Counseling		■ 1								
Educational Leadership	■	■ 1	■		■	■	■		■	
Educational Leadership (higher education)						■				
Educational Media and Technology										■
Engineering Management										■
Health Education						■ 3				
Human Nutrition (coordinated program in dietetics)										■
Human Resource Mgmt. and Organizational Development						■				
Liberal Studies – Technology		■ 1						■ 1		
Nursing						■				
Occupational Therapy (advanced)									■	
Physical Education with Concentration in Pedagogy						■				
Public Administration						■				
Quality						■			■	■
Reading							■			
Social Work		■ 2							■	
Special Education	■		■						■	
Special Education (general education teacher)			■							

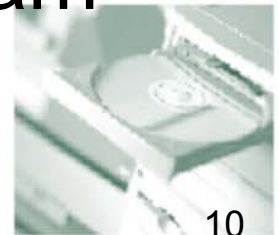
■ 1 Core course sequence only; ■ 2 Beginning Fall 2004; ■ 3 Beginning Winter 2005





## Quality Assurance

- All credit courses are offered through an academic department
- Academic departments select and appoint instructors
- Any course or program offered through CE is part of department's normal program review process





# Growth of CE: Courses & Credit Hours

## Continuing Education Growth in Enrollment/Student Credit Hours FY1998 - FY2004

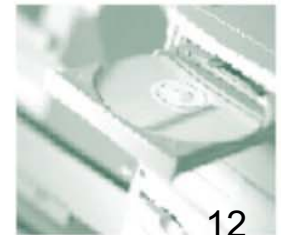
Fiscal Year	1997-98	1998-99	1999-00	2000-01	2001-02	2002-03	2003-04
<b>Student Credit Hours</b>	40,257	42,575	51,896	52,338	53,036	57,604	66,808
<b>Year to Year % Increase</b>		5.8%	21.9%	0.9%	1.3%	8.6%	16.0%





## Forecast SCH by Location/Delivery FY 2004-2005

- Distance Education 27,473
- Washtenaw County 17,625
- Regional Centers 17,385
- Alternative Delivery 7,312





# Instructional Compensation

## Types of compensation:

- Faculty In Load
- Faculty Over Load
- Lecturer In Load
- Adjunct Rate
- Grading stipends and honoraria
- Course Development fees
- Travel Reimbursement

