

COUN Orientation



Department of Leadership and Counseling
Counseling Program



Program Overview

- ❖ CACREP Accreditation
- ❖ Program Tracks (48 cr.)
 - College
 - Community (until Oct. 2013)
 - School K-12
- ❖ New Program (Fall 2011) (60 cr.)
 - Clinical Mental Health
- ❖ Role of Advisor
 - Program of Study
 - Approve transfers
 - Approve electives
 - Approve internship
 - Guide and facilitate
- ❖ Structure of Program
 - Core courses
 - Specialization courses
 - Elective courses
 - Practicum and internship



Counseling Program Orientation

The Faculty- School

**Dr. Sue
Stickel**



Dr. Diane Parfitt



Dr. Suzanne Dugger

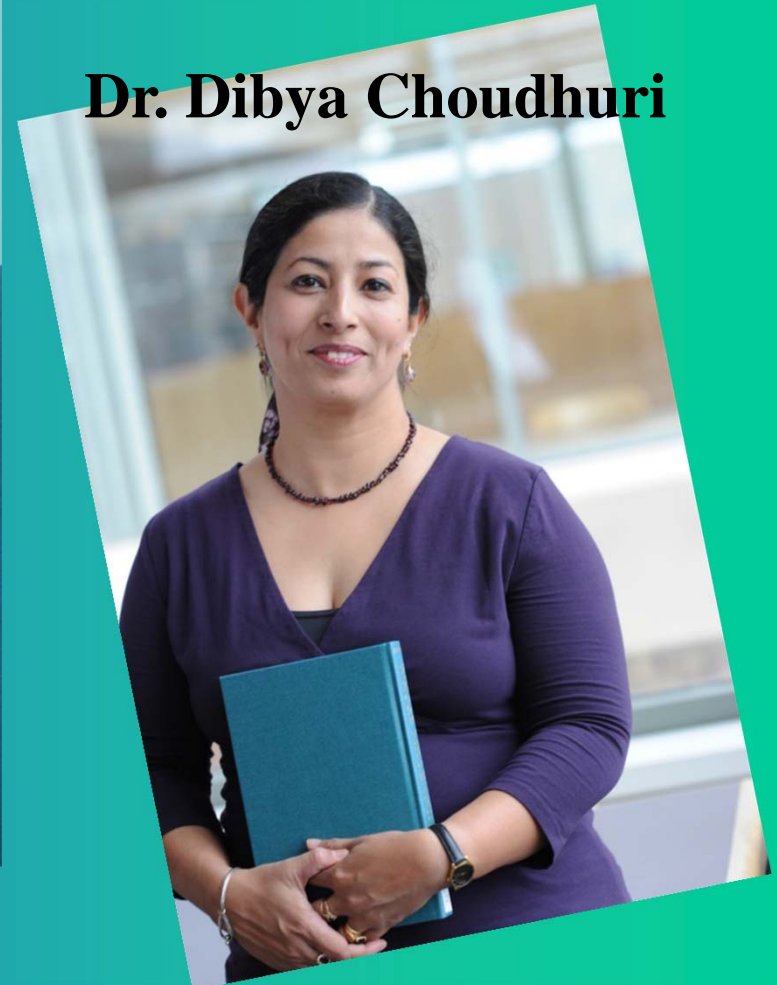


Counseling Faculty – Community/Clinical Mental Health

Dr. Irene Ametrano



Dr. Dibya Choudhuri

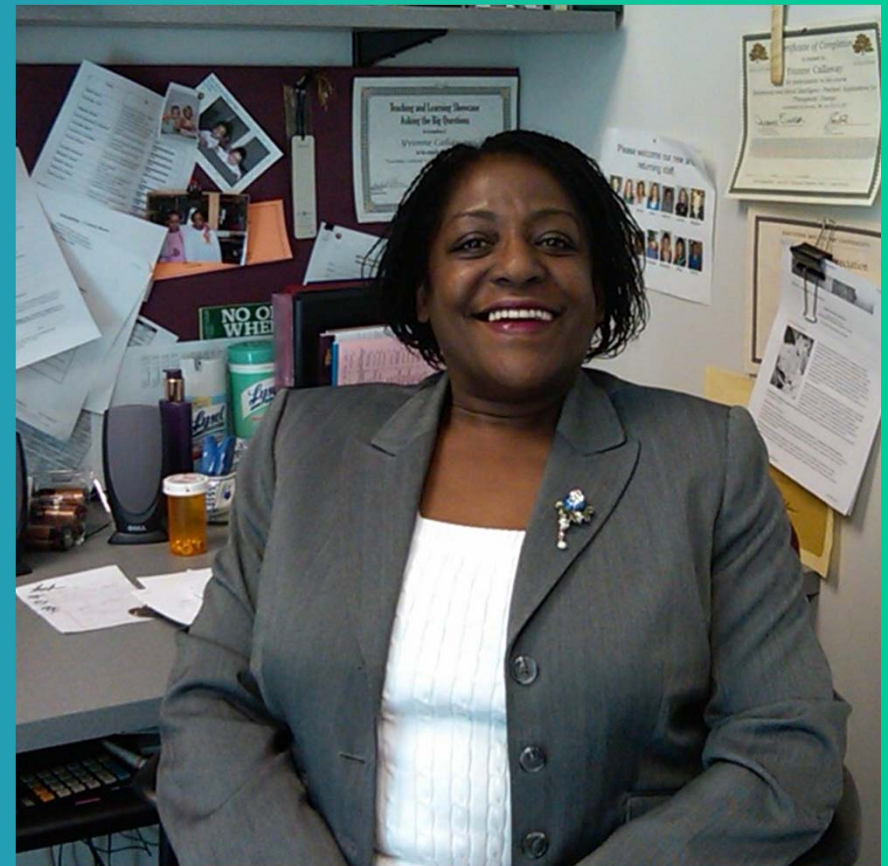


Faculty - College

Dr. Perry Francis



Dr. Yvonne Callaway



Two important resources – Department Secretaries

Sally Rosales



Rose Lisk



Overview of program

- ❖ Once admitted, students are assigned a faculty advisor in their program track. It is their responsibility to meet with the advisor and develop a program of study.
- ❖ Students start with core courses. It is important to go somewhat in sequence, noticing that some courses are preparation for others. Higher numbered courses are more complex than earlier ones.
- ❖ While you are completing the core, you may also take specialization courses and elective courses as they are offered.
- ❖ Only when you are in the semester in which you will be completing the core can you apply for practicum—the first clinical experience.
- ❖ Students apply again for internship, based on successful completion of practicum
- ❖ You may not accrue internship hours until you have been approved for internship and are registered for the internship seminar.
- ❖ At some point while completing practicum, you will take the Counselor Preparation Comprehensive Exam, which is the exit requirement for the program.

Course Rotation and Rollouts

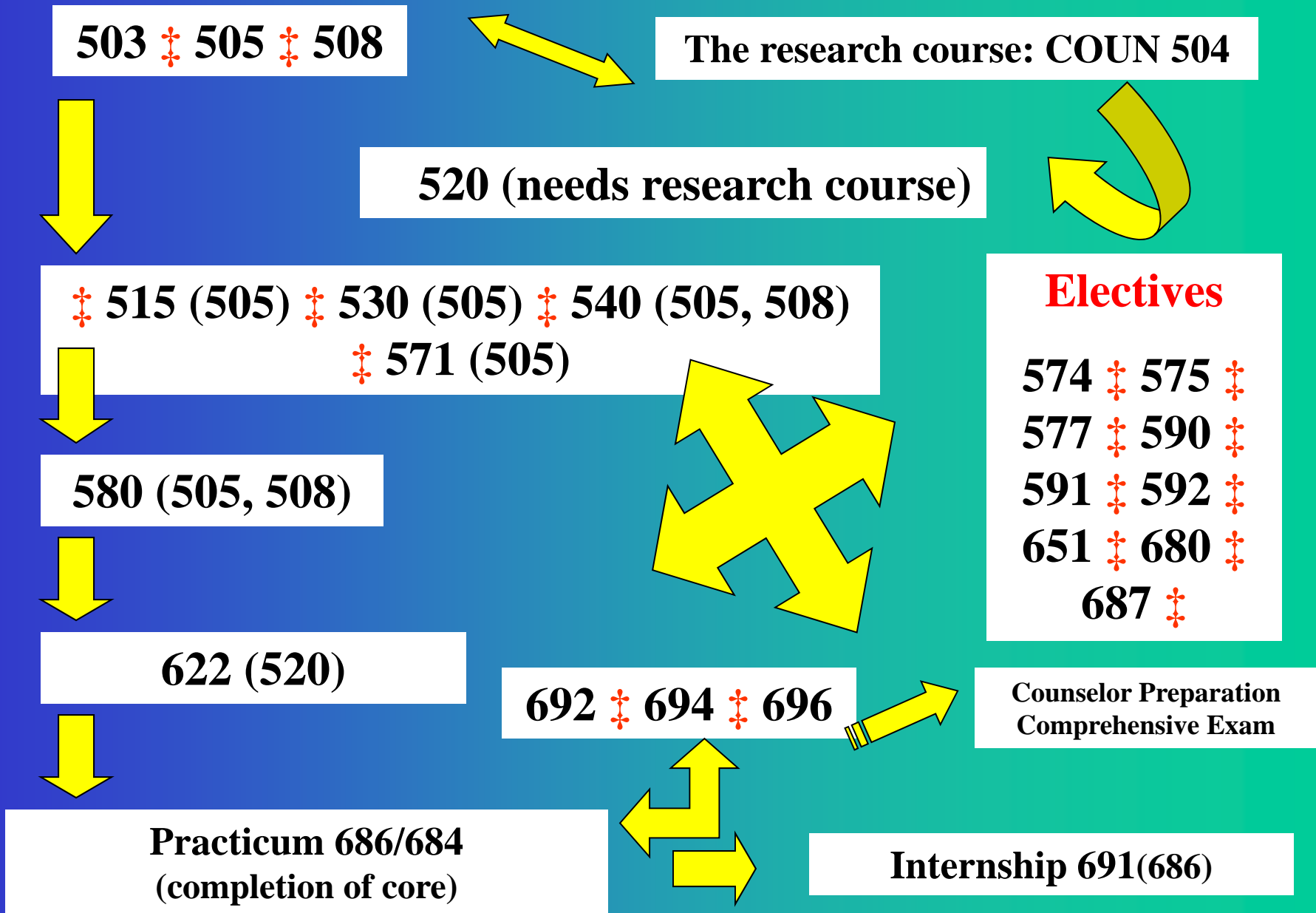
- ❖ Core Courses: These are usually offered 2 to 3 times a year . Note that 571, 580 and 622 are never offered in SP or SU)
- ❖ Specialization courses: usually offered once a year
 - E.g. 696 in Fall. 694 in Winter. 650 and 660 in Spring/Summer
- ❖ Elective courses: offered once a year or every two years depending on demand and availability. E.g. 574, 575
- ❖ Practicum: Offered Fall and Winter with a maximum of 3 sections of 5 students each, and 1 section of 5 students in Spring/Summer
 - Time intensive – minimum of 6 hours of availability to see clients, 2 hours of group supervision, 1 hour of individual supervision per week.
 - Need to be flexible – be available when clients are not just when you have time
 - Energizing and exhausting – exhilarating in that you are finally working and applying skills. But also emotionally draining working with the issues clients bring.
- ❖ Internship is offered every semester from 1 to 4 credits

LiveText Assessment

- ❖ Live text is a software program that is currently being used for assignment submission, artifact collection, standards integration, and student assessment in EMU's educator preparation programs. Certain assignments for your courses will be submitted through Livetext. We assess the impact of courses on the 8 CACREP areas through aggregated student data.
- ❖ Go to <http://www.emich.edu/coe/livetext/> There is a one time cost that will suffice for your membership through the program.
- ❖ Help and answers can be found at <http://www.emich.edu/coe/livetext/students/index.html>

Going through the program

Counseling Program Orientation



Exit Requirement:

Counselor Preparation Comprehensive Exam (CPCE)

- ❖ a knowledge-based, standardized examination that reflects the eight core curriculum areas approved by the Council for the Accreditation of Counseling and Related Educational Programs (CACREP).
- ❖ 160 questions. Cost of \$35.00
- ❖ Taken at the culmination of the program coursework
- ❖ The passing score is calculated as equal to or greater than -1.0 standard deviations from the national mean.
- ❖ You can take it twice. A third attempt requires going through the formal review process and special permission.
- ❖ If you do not pass it you cannot graduate with a counseling degree.

Counseling Career Development

- ❖ Academic preparation is only one step in the process of a counseling career.
 - All your coursework does not get you a counseling position—it prepares you to function in such a position to the extent that you have learnt the skills and knowledge you require.



- ❖ To lay the foundations of a counseling career, you have to
 - ❖ explore your interests
 - ❖ understand how you enjoy working with people
 - ❖ decide on the kinds of population and setting in which you wish to work

As you take your coursework

❖ Be self-directed!

- Use your assigned readings, lectures, discussions, as stimuli to pursue more learning.
- Read. Go beyond the textbook to read work written by theorists, read fiction that describes and expands on the human experience. Read!
- Find a mentor in the field. Someone who can guide you, inspire you, who you can trust and learn from.
- Begin networking. Develop friendships with other students as well as professionals in the field.
- Build experiences through volunteering.
- Use professional development opportunities such as conferences, workshops, and networking to demonstrate your commitment and interests, as well as polish and develop specific skills. Join professional organizations.

Counseling Program Orientation

Self-Discovery and Self-Education

- ❖ Experience counseling as a client
- ❖ Personalize everything
- ❖ Challenge yourself
- ❖ Challenge your teachers
- ❖ Ask questions
- ❖ Expand your world
- ❖ Develop a flexible specialty



What do I think of other people in general?

How do I come across to other people? How do I know this?



How comfortable am I in social situations?

Counseling Program Orientation

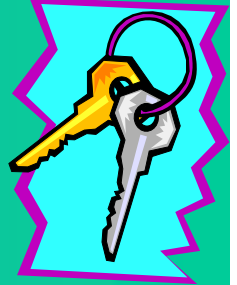
What qualities or strengths do I possess that will be assets as a counselor?

What are challenges that might interfere with my work as a counselor?

What are specific concerns I have regarding being a counselor?



Keys to Academic and Professional Success



❖ Commitment

- Prioritization
- Balancing life with graduate school
- Anticipation of obstacles

❖ Professionalism

- Behavior/Attitude/Awareness
- Quality of Work
 - Skills
 - Knowledge
 - Work Products

Writing in Graduate School

- ❖ Different kinds of written work
- ❖ Self-reflective papers
- ❖ Issues of presentation
- ❖ Issues of organization
- ❖ Professional style and personal voice
- ❖ Plagiarism
- ❖ APA Style
 - Professional expression of ideas in human services and the helping fields
 - Content and organization
 - Editorial style
 - References



Core issues in Professional writing

- ❖ The citation of sources is a key point. Always back up statements with references—never make unsupported claims.
- ❖ If you **quote** something written by another author, or if you paraphrase what another author has said, you must include a **citation** in your text that points to a **reference** on your bibliography/reference page that tells where you got that information.
- ❖ Highlight the research and not the researchers-where a study took place or the journal it was published in is irrelevant. For e.g. “Jones and Smith (2003) examined the effects of marijuana use on the behavior of middle school children”.
- ❖ Avoid certainty and dogmatism. Don't use "proof" or "proves."
 - The evidence suggests
 - Growing evidence provides support
 - Several studies indicate
 - These results imply...
- ❖ When you write in APA style, you typically do not use first person voice ("I thought/felt/studied...").
- ❖ Use of Quotations: Develop your own writing voice. One reason not to use long quotations is that you suddenly bring in a different style to your paper that is very evident.
- ❖ Bias
 - Formality and respect in language used
 - Gender neutral
 - Using professional and appropriate labels in terms of race, gender, disability, and sexual orientation

COUN Student Handbook

- ❖ Important Information is also contained within the COUN Student Handbook!
- ❖ Available online at:
http://www.emich.edu/coe/Lead_Coun/counseling/CounselingStudentHandbook.pdf
- ❖ Contains information about:
 - The Program
 - Disciplinary Policy
 - Code of Ethics



Get Connected!

- ❖ Subscribe to the COUN Listserv
<http://list.emich.edu/mailman/listinfo/coun>
- ❖ Explore EMU website
 - www.emich.edu
- ❖ Access your my.emich email address
 - This is where your course faculty and advisors will contact you
 - <http://my.emich.edu/>
 - You can forward your EMU e-mail to another account by logging in and selecting 'Options,' 'E-mail,' then 'Auto Forward.' Enter your preferred e-mail address there. Be sure to check in and periodically delete messages from your emich account
- ❖ Access the EMU electronic reserves
 - <http://reserves.emich.edu>
- ❖ Halle Library resources
 - <http://caxton.emich.edu/guide/guide.php?id=177>



Important Websites

- ❖ Department Homepage
 - <http://www.emich.edu/coe/lc/>
- ❖ COUN Handbook
 - <http://www.emich.edu/coe/lc/documents/pdf/counseling/CounselingStudentHandbook.pdf>
- ❖ EMU Counseling Clinic
 - <http://www.emich.edu/coe/clinics/counseling/index.html>
- ❖ College Student Affairs
 - <http://www.emich.edu/coe/lc/sa/index.html>
- ❖ EMU Library
 - <http://www.emich.edu/halle/>
- ❖ EMU Commuter Information
 - <http://www.emich.edu/commute/>



Purchasing Books

❖ Local Stores:

- EMU Bookstore
- Ned's Bookstore
- Mike's Bookstore
- Campus Books and Supplies

❖ On-Line:

- www.dealoz.com
- www.ecampus.com
- www.textbooks.com
- www.bigbooks.com
- www.half.com
- www.amazon.com



Opportunities at EMU

- ❖ EMU Graduate Student Research Fair
 - Presenting here is a great way to begin practicing professionalism
- ❖ EMU Graduate Assistantships and fellowships, and scholarships
 - Never self select out by not even applying.
- ❖ Go to the Graduate School Website:
- ❖ <http://www.gradschool.emich.edu/>