

# Winter Stonefly Search

Sat. Jan. 26, 2008

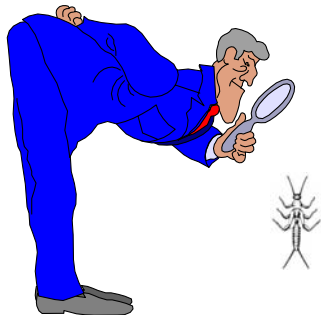
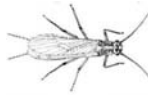
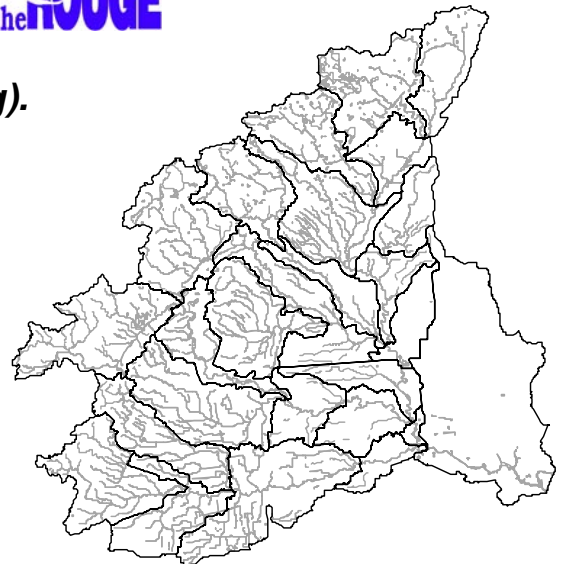
Calling all fishermen, fisherwomen, naturalists, & anyone who likes to know what lives in the river.

*Stoneflies are a sensitive aquatic insect (and trout food). Their presence in the creek indicates good water quality (and good fishing).*

**Friends  
of  
the ROUGE**

Meeting location: Environmental Interpretive Center  
University of Michigan-Dearborn  
4901 Evergreen Road  
Dearborn, MI 48128

Time: 9:00 A.M. – 3:00 P.M.



Registration required on or before  
January 18, 2008 by calling  
(313) 792-9621 or e-mailing  
[picoordinator@therouge.org](mailto:picoordinator@therouge.org)

## Benthic Macroinvertebrate Sampling Program

Volunteers will be assigned into teams prior to their arrival on Jan. 26<sup>th</sup>. Teams of volunteers, led by trained volunteers, will travel to 2 different sites in the headwaters of the Rouge River Watershed to sample. Volunteers sort through samples collected from the stream by team leaders for stoneflies. Results are given to Rouge River watershed communities, the Michigan Department of Environmental Quality, volunteers and others.

\*\*\* No experience is necessary. Children welcome when accompanied by one adult per child. \*\*\*

Co-sponsored by Friends of the Rouge, Rouge communities, and the Subwatershed Advisory Groups.  
Supported, in part, by a grant from the Rouge River National Wet Weather Demonstration Project.

**Friends  
of  
the ROUGE**

Promoting restoration and stewardship of the Rouge River ecosystem through education, citizen involvement and other collaborative efforts, for the purpose of improving the quality of life of the people, plants and animals of the watershed. Visit us online at [www.therouge.org](http://www.therouge.org).