



# TOP/PPQC News

Volume 1, Issue 2

November 2009

**Eastern Michigan  
University Physical  
Plant**

## Update on Lighting



### Inside this issue:

Update on Lighting	1
Process Map	2
More Energy Saving Tips	3

One of the TOP PPQC's first Process Improvement Request Forms (PIRF's) was submitted by Ken Hall Halle, Physical Plant, Custodian. His request regarded the reduction in lighting levels in the hallways by installing switches or removing bulbs. After several months of investigation the committee provided a response to Ken

Dear Ken,

We apologize for the delay in responding to your Process Improvement Request.

The TOP-PPQC concurs that improvements are needed to reduce lighting in building hallways and other locations in order to conserve energy. After reviewing your Process Improvement Request we have the following to report:

1. There are numerous locations on campus which are over-

illuminated by today's standards when energy conservation is a key focus.

2. Not all buildings are properly wired to allow switching lights off. Removing bulbs is not an effective means as the ballast in the fixture will still be using energy. Fixtures which are off will get reported for repair when they are intended to be off. Removal of the fixture is the best solution.

3. Electrical staff are working with the design firms for both Pray Harrold and Mark Jefferson renovations in order to be sure those building will be set up to minimum standards when occupied and switchable when unoccupied using

programmable equipment.

4. The Energy Conservation and Sustainability Manager is reviewing kWh/sq ft in all buildings and is commencing to work on the highest consumption buildings to identify conservation measures.

5. Electrical shop is reviewing Halle, Marshall, Porter, and Boone to identify how these newer building can be operated or modified to optimize energy conservation with regard to lighting.

6. EMU has started allocating Asset Preservation funds annually in order to make conservation improvements. This is a change from past practice.

*Continued on Page 3*

## Mapping the Way



One of the goals of the PPQC is to establish and maintain a systematic approach to identifying, implementing, documenting, and improving processes. In order to accomplish this, one of the first charges of the group was to establish the system. The process map outlines how requests are received and the process that take the request from beginning to end.

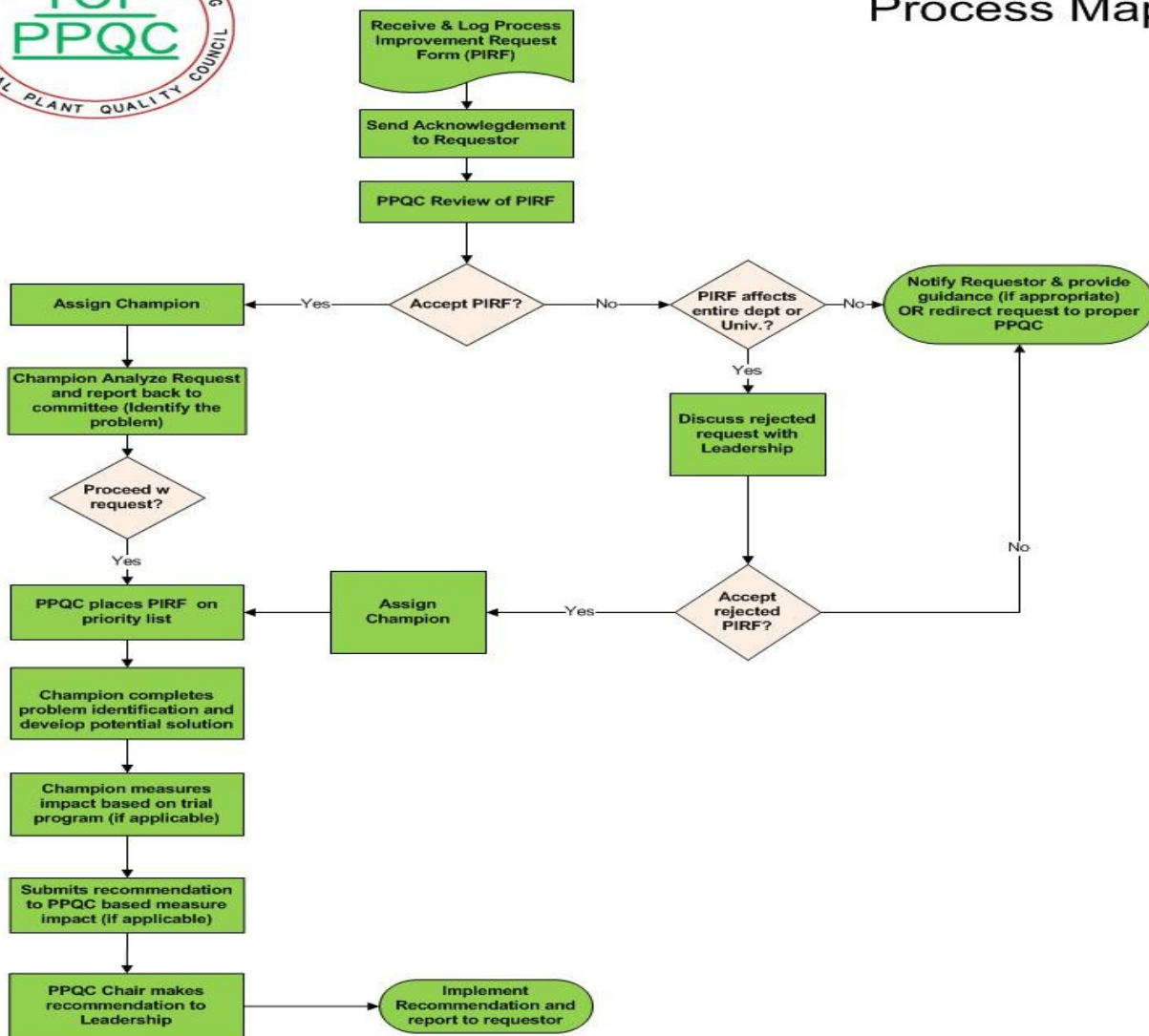
A goal without a plan is just a wish.

Antoine de Saint-Exupery

*French writer (1900 - 1944)*



## Process Map



## Lighting Update



*Continued from page 1*

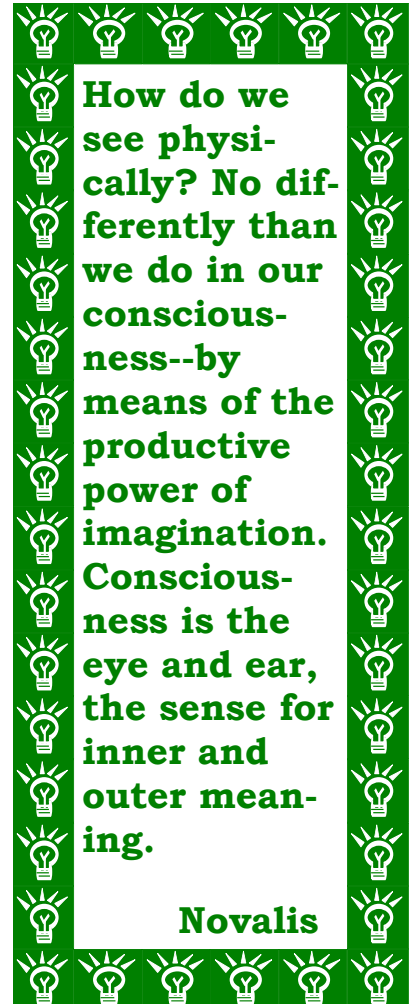
7. The University is now allowing any improvement with a one year cost pay back to be funded directly from the energy budget. This is a change from past practice.
8. DTE energy has been mandated by the Public Service Commission (PSC) to implement a program to conserve energy with mandated annual reductions. This program has incentive rebates which will help to fund improvements and the Physical Plant staff is planning to participate in this program when the PSC finally approves the DTE program.
9. All of these efforts are ongoing and take time to implement and for results to be witnessed through energy savings.

Thank you for your interest in

energy conservation and for submitting your Process Improvement Request Form. While this work will continue to be on-going, your PIRF is now being considered closed.

Sincerely,

Mark Monarch, TOP PPQC  
Council Leader



## More Energy Saving Tips

- Use a flat panel monitor! Old CRT monitors can use \$8.57 more in energy cost per year than a new flat panel monitor. Make sure your monitor is upgraded at every computer refresh.
- Get rid of your personal refrigerator! Each personal refrigerator uses about \$21.00 per year in energy cost.
- Store your food and drink in a common refrigerator as needed.
- Turn your thermostat down! Each degree that the temperature is lowered saves about \$3 per 100 square feet of space. If all of campus lowered the temperature by 1 degree, EMU would save over \$130,000 per year.

