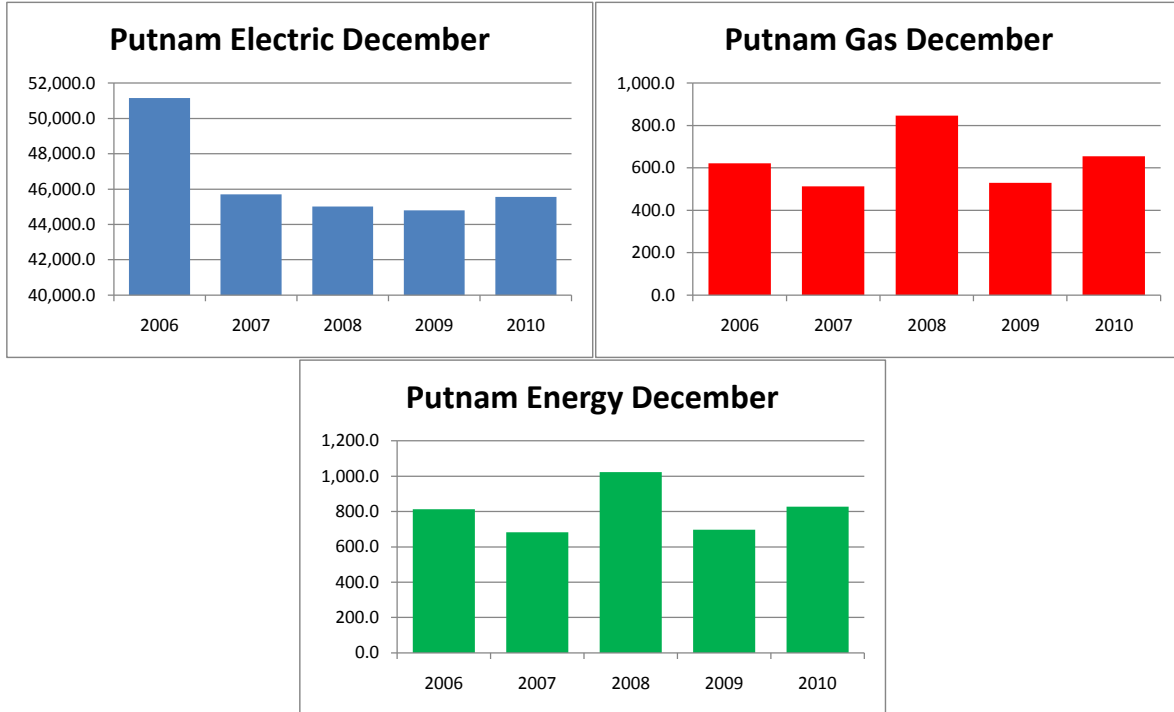


Monthly Energy Report

Putnam

December, 2010

This month, Putnam used 45,551 kWh of electricity and 655 MCF of gas, for a total of 828 MMBTU of energy use. This is a 19% increase in total energy use from this month last year and a 3% increase from the three-year average. Electricity costs for this month were \$3,599 and gas costs were \$4,193 for a total cost of \$7,792.



In the last 12 months, Putnam has used 522,463 kWh of electricity and 5,218 MCF of gas, for a total of 7,142 MMBTU of energy use. This is a 14% decrease in total energy use from the previous 12 months.

Electricity costs for this year were \$41,275 and gas costs were \$33,395 for a total cost of \$74,670.

