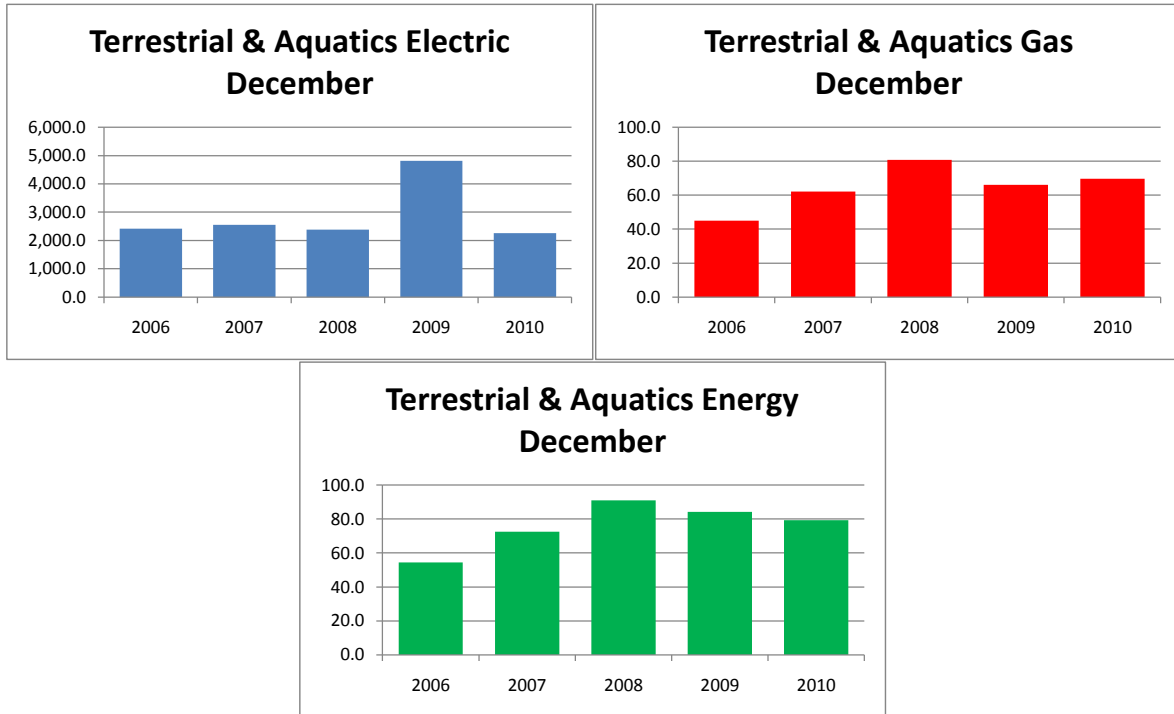


Monthly Energy Report

Terrestrial & Aquatics

December, 2010

This month, Terrestrial & Aquatics used 2,258 kWh of electricity and 70 MCF of gas, for a total of 79 MMBTU of energy use. This is a 6% decrease in total energy use from this month last year and a 4% decrease from the three-year average. Electricity costs for this month were \$178 and gas costs were \$446 for a total cost of \$625.



In the last 12 months, Terrestrial & Aquatics has used 37,256 kWh of electricity and 341 MCF of gas, for a total of 478 MMBTU of energy use. This is a 4% decrease in total energy use from the previous 12 months. Electricity costs for this year were \$2,943 and gas costs were \$2,184 for a total cost of \$5,127.

