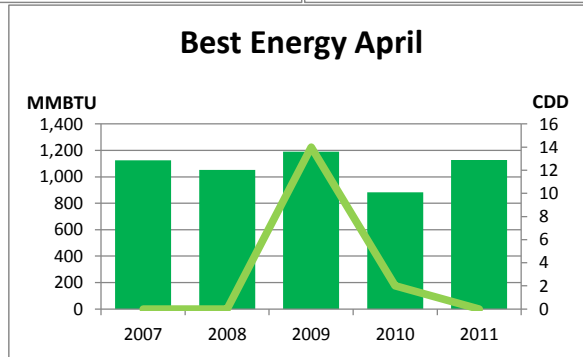
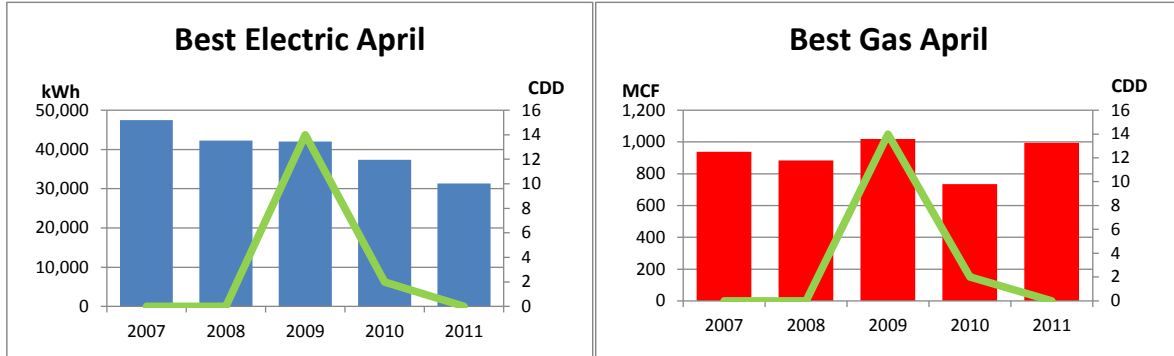


# Monthly Energy Report

Best

April, 2011

This month, Best used 31,332 kWh of electricity and 995 MCF of gas, for a total of 1,128 MMBTU of energy use. This is a 28% increase in total energy use from this month last year and a 8% increase from the three-year average. Electricity costs for this month were \$2,475 and gas costs were \$6,365 for a total cost of \$8,841.



In the last 12 months, Best has used 392,166 kWh of electricity and 9,584 MCF of gas, for a total of 11,181 MMBTU of energy use. This is a 10% increase in total energy use from the previous 12 months. Electricity costs for this year were \$30,981 and gas costs were \$61,336 for a total cost of \$92,317.

