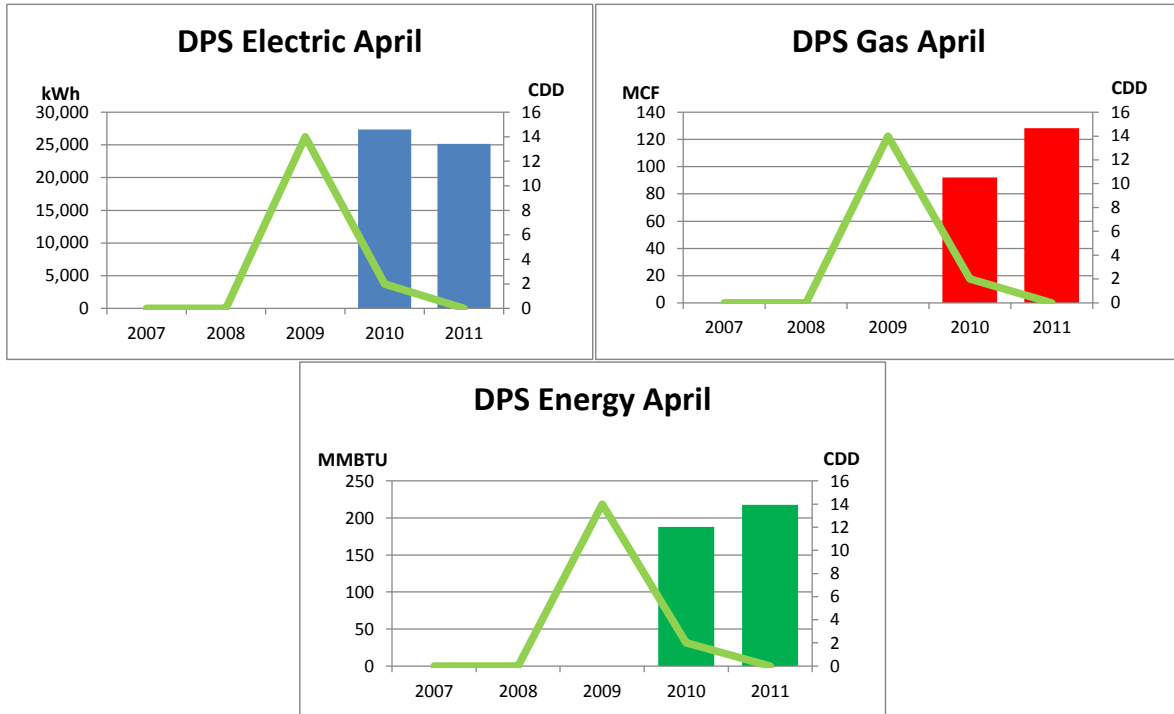


# Monthly Energy Report

DPS

April, 2011

This month, DPS used 25,179 kWh of electricity and 128 MCF of gas, for a total of 218 MMBTU of energy use. This is a 16% increase in total energy use from this month last year and a 247% increase from the three-year average. Electricity costs for this month were \$1,989 and gas costs were \$820 for a total cost of \$2,810.



In the last 12 months, DPS has used 319,465 kWh of electricity and 1,156 MCF of gas, for a total of 2,277 MMBTU of energy use. This is a 26% increase in total energy use from the previous 12 months. Electricity costs for this year were \$25,238 and gas costs were \$7,395 for a total cost of \$32,633.

