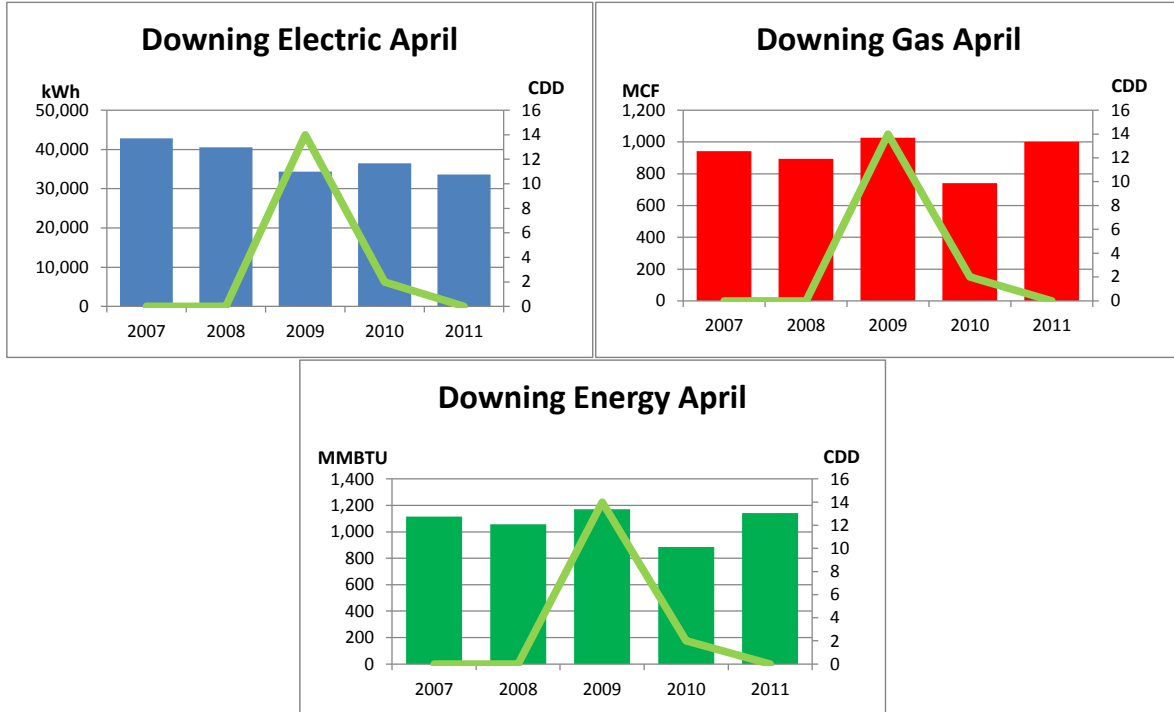


Monthly Energy Report

Downing

April, 2011

This month, Downing used 33,623 kWh of electricity and 1,000 MCF of gas, for a total of 1,142 MMBTU of energy use. This is a 29% increase in total energy use from this month last year and a 10% increase from the three-year average. Electricity costs for this month were \$2,656 and gas costs were \$6,403 for a total cost of \$9,059.



In the last 12 months, Downing has used 452,022 kWh of electricity and 9,701 MCF of gas, for a total of 11,505 MMBTU of energy use. This is a 14% increase in total energy use from the previous 12 months. Electricity costs for this year were \$35,710 and gas costs were \$62,084 for a total cost of \$97,794.

