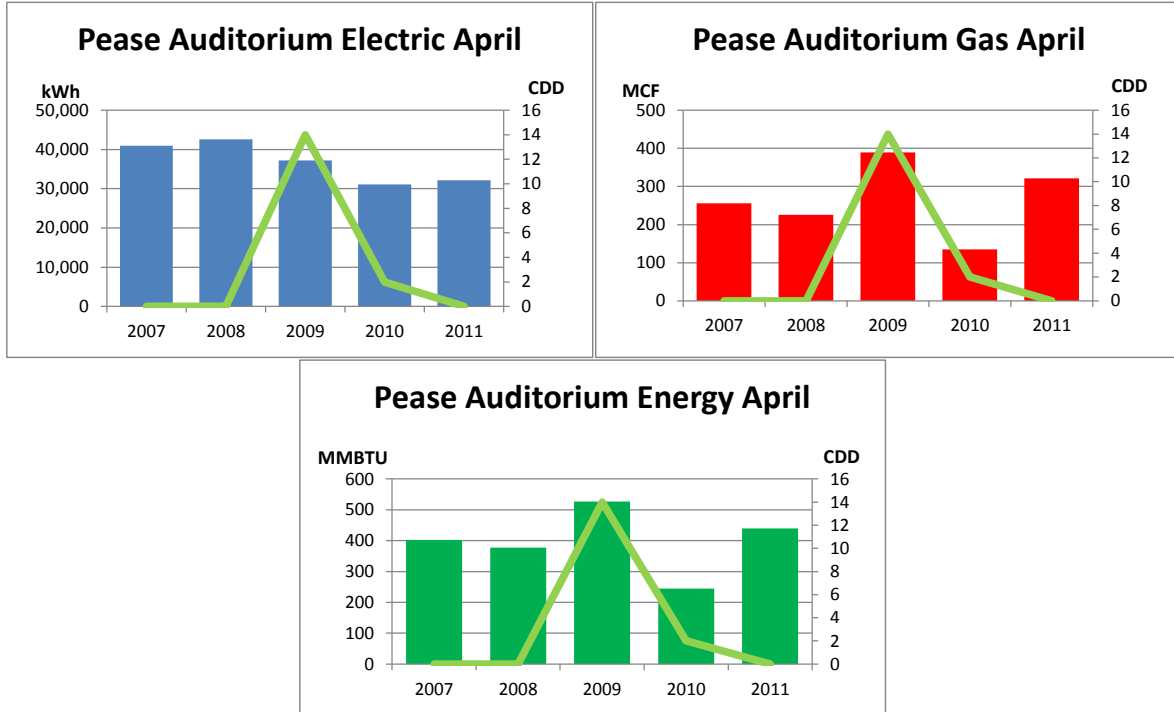


Monthly Energy Report

Pease Auditorium

April, 2011

This month, Pease Auditorium used 32,125 kWh of electricity and 321 MCF of gas, for a total of 440 MMBTU of energy use. This is a 79% increase in total energy use from this month last year and a 15% increase from the three-year average. Electricity costs for this month were \$2,538 and gas costs were \$2,056 for a total cost of \$4,594.



In the last 12 months, Pease Auditorium has used 413,429 kWh of electricity and 9,419 MCF of gas, for a total of 11,084 MMBTU of energy use. This is a 5% decrease in total energy use from the previous 12 months. Electricity costs for this year were \$32,661 and gas costs were \$60,284 for a total cost of \$92,944.

