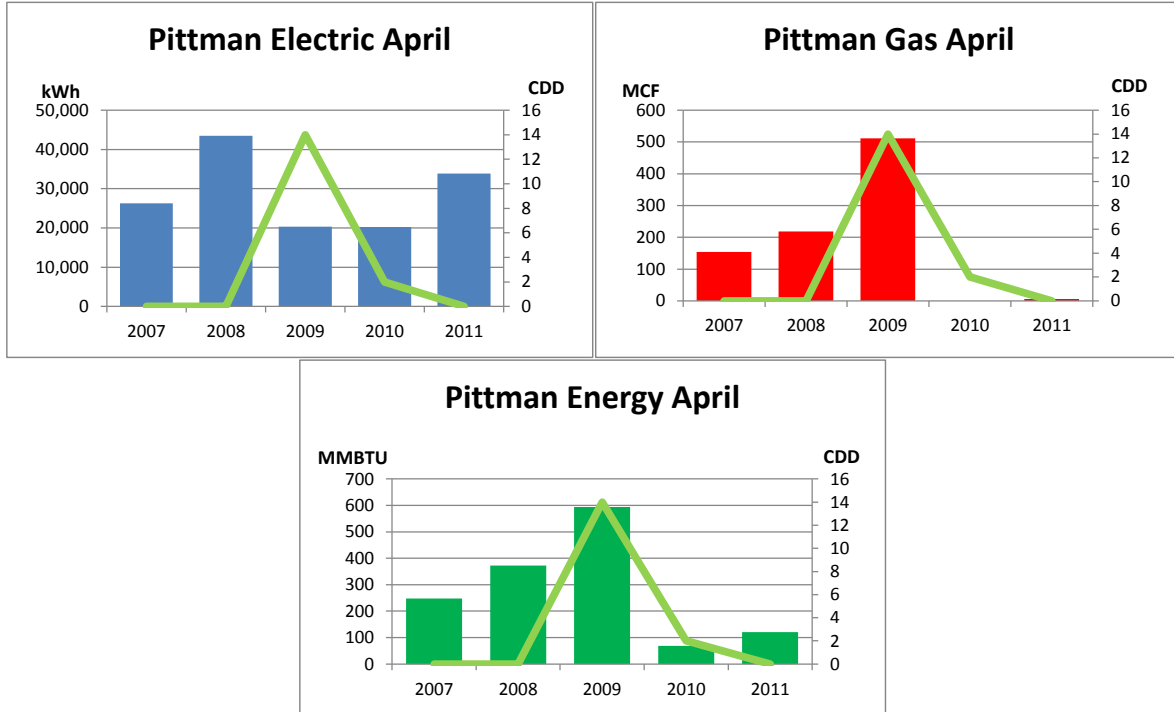


Monthly Energy Report

Pittman

April, 2011

This month, Pittman used 33,834 kWh of electricity and 6 MCF of gas, for a total of 121 MMBTU of energy use. This is a 76% increase in total energy use from this month last year and a 65% decrease from the three-year average. Electricity costs for this month were \$2,673 and gas costs were \$36 for a total cost of \$2,709.



In the last 12 months, Pittman has used 466,471 kWh of electricity and 59 MCF of gas, for a total of 1,652 MMBTU of energy use. This is a 33% decrease in total energy use from the previous 12 months. Electricity costs for this year were \$36,851 and gas costs were \$376 for a total cost of \$37,227.

