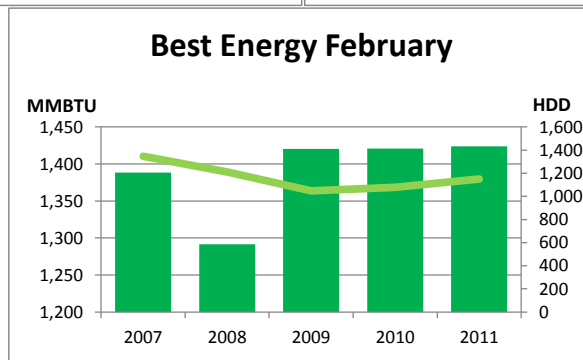
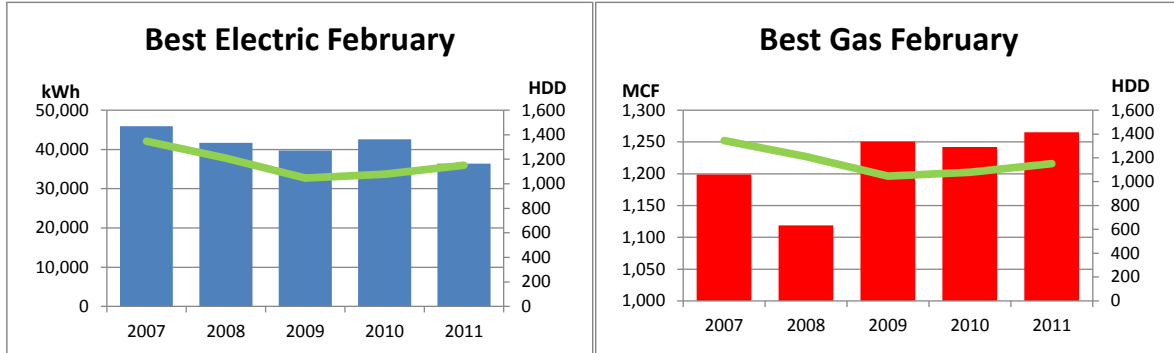


# Monthly Energy Report

Best

February, 2011

This month, Best used 36,388 kWh of electricity and 1,265 MCF of gas, for a total of 1,424 MMBTU of energy use. This is a % increase in total energy use from this month last year and a 3% increase from the three-year average. Electricity costs for this month were \$2,875 and gas costs were \$8,098 for a total cost of \$10,973.



In the last 12 months, Best has used 401,809 kWh of electricity and 8,999 MCF of gas, for a total of 10,613 MMBTU of energy use. This is a 3% decrease in total energy use from the previous 12 months. Electricity costs for this year were \$31,743 and gas costs were \$57,595 for a total cost of \$89,338.

