

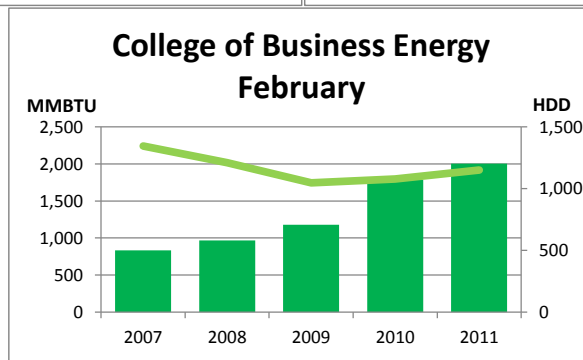
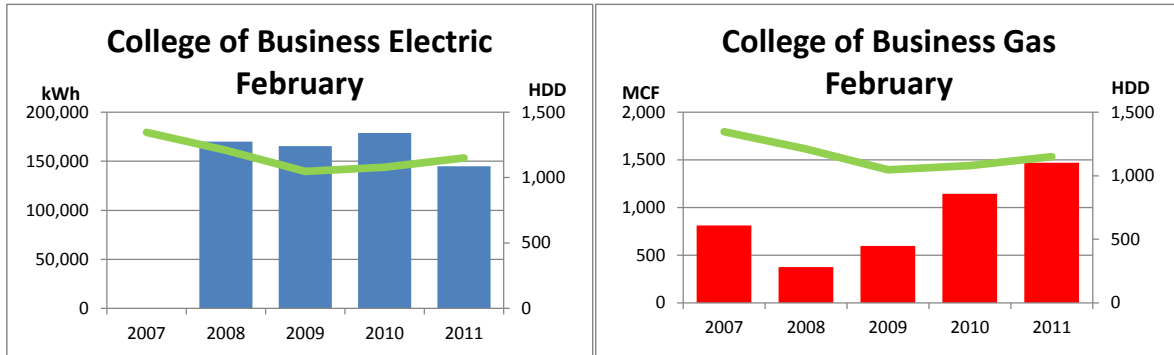
Monthly Energy Report

College of Business

February, 2011



This month, College of Business used 145,040 kWh of electricity and 1,468 MCF of gas, for a total of 2,003 MMBTU of energy use. This is a 12% increase in total energy use from this month last year and a 53% increase from the three-year average. Electricity costs for this month were \$11,458 and gas costs were \$9,396 for a total cost of \$20,855.



In the last 12 months, College of Business has used 2,369,600 kWh of electricity and 10,028 MCF of gas, for a total of 18,384 MMBTU of energy use. This is a 46% increase in total energy use from the previous 12 months.

Electricity costs for this year were \$187,198 and gas costs were \$64,181 for a total cost of \$251,380.

