

Monthly Energy Report

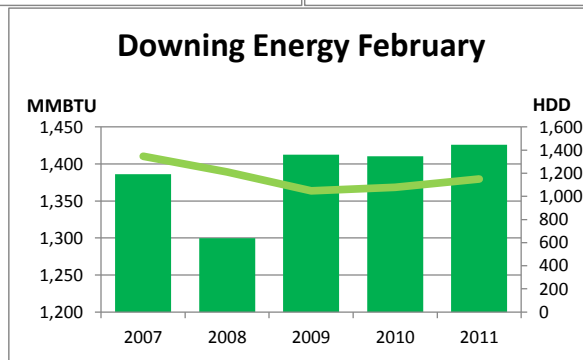
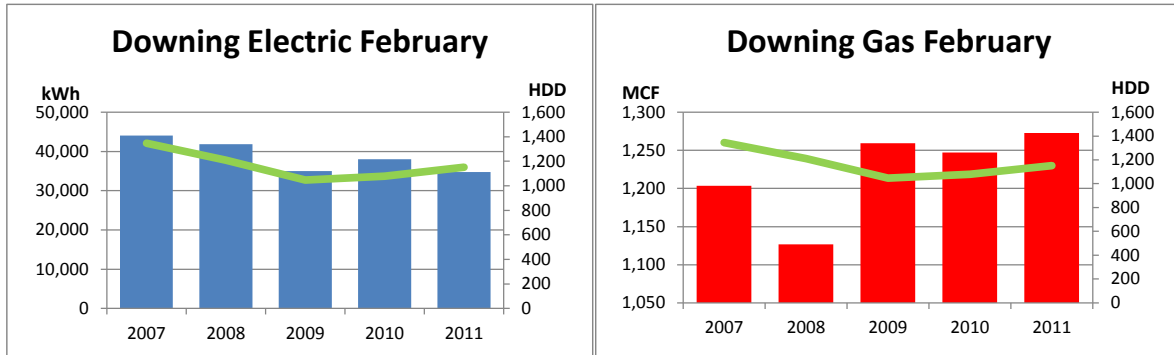
Downing

February, 2011

This month, Downing used 34,740 kWh of electricity and 1,273 MCF of gas, for a total of 1,426 MMBTU of energy use.

This is a 1% increase in total energy use from this month last year and a 4% increase from the three-year average.

Electricity costs for this month were \$2,744 and gas costs were \$8,146 for a total cost of \$10,891.



In the last 12 months, Downing has used 457,589 kWh of electricity and 9,126 MCF of gas, for a total of 10,934 MMBTU of energy use. This is a 1% increase in total energy use from the previous 12 months.

Electricity costs for this year were \$36,150 and gas costs were \$58,407 for a total cost of \$94,556.

