

# Monthly Energy Report

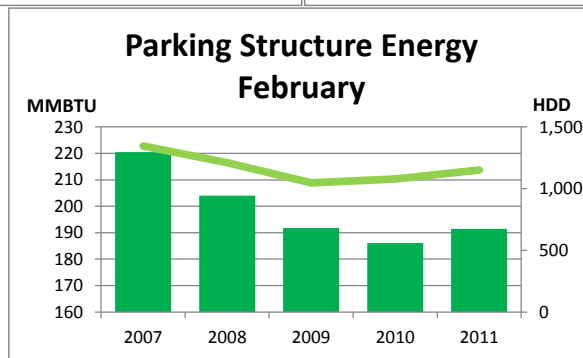
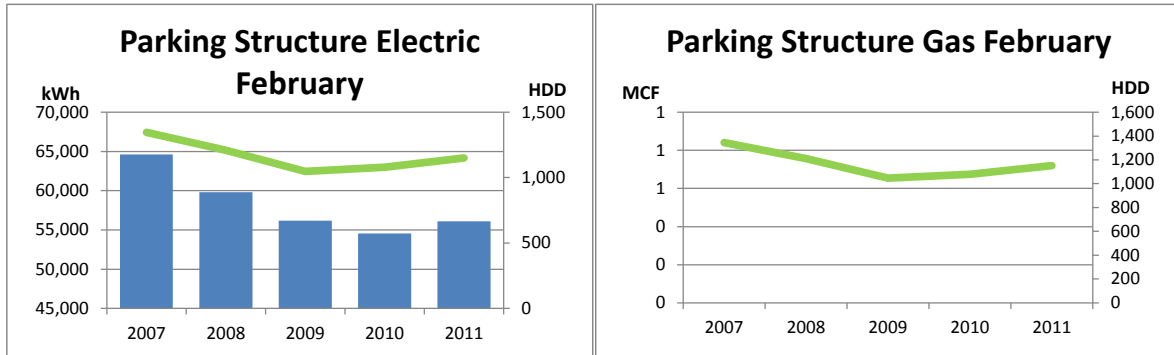
## Parking Structure

February, 2011

This month, Parking Structure used 56,115 kWh of electricity and 0 MCF of gas, for a total of 191 MMBTU of energy use.

This is a 3% increase in total energy use from this month last year and a 1% decrease from the three-year average.

Electricity costs for this month were \$4,433 and gas costs were \$0 for a total cost of \$4,433.



In the last 12 months, Parking Structure has used 598,295 kWh of electricity and 0 MCF of gas, for a total of 2,041 MMBTU of energy use. This is a 10% increase in total energy use from the previous 12 months.

Electricity costs for this year were \$47,265 and gas costs were \$0 for a total cost of \$47,265.

