

# Monthly Energy Report

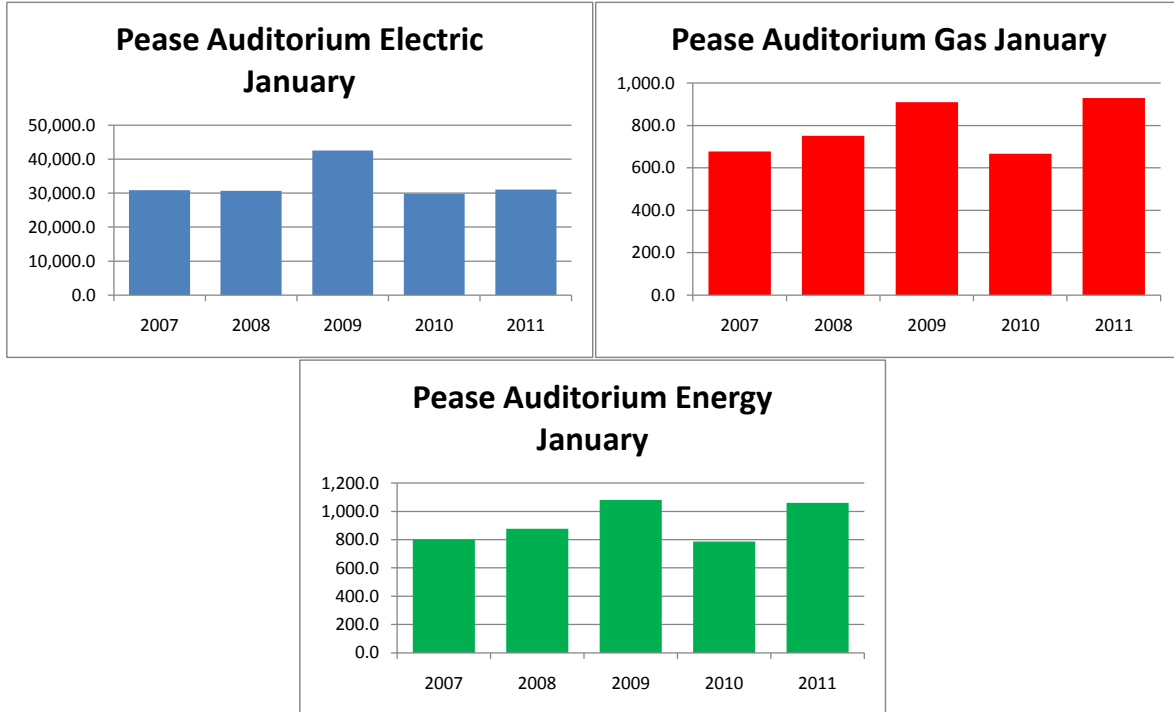
## Pease Auditorium

January, 2011

This month, Pease Auditorium used 31,040 kWh of electricity and 930 MCF of gas, for a total of 1,061 MMBTU of energy use.

This is a 35% increase in total energy use from this month last year and a 16% increase from the three-year average.

Electricity costs for this month were \$2,452 and gas costs were \$5,951 for a total cost of \$8,403.



In the last 12 months, Pease Auditorium has used 412,374 kWh of electricity and 9,209 MCF of gas, for a total of 10,864 MMBTU of energy use. This is a 9% decrease in total energy use from the previous 12 months.

Electricity costs for this year were \$32,578 and gas costs were \$58,936 for a total cost of \$91,514.

