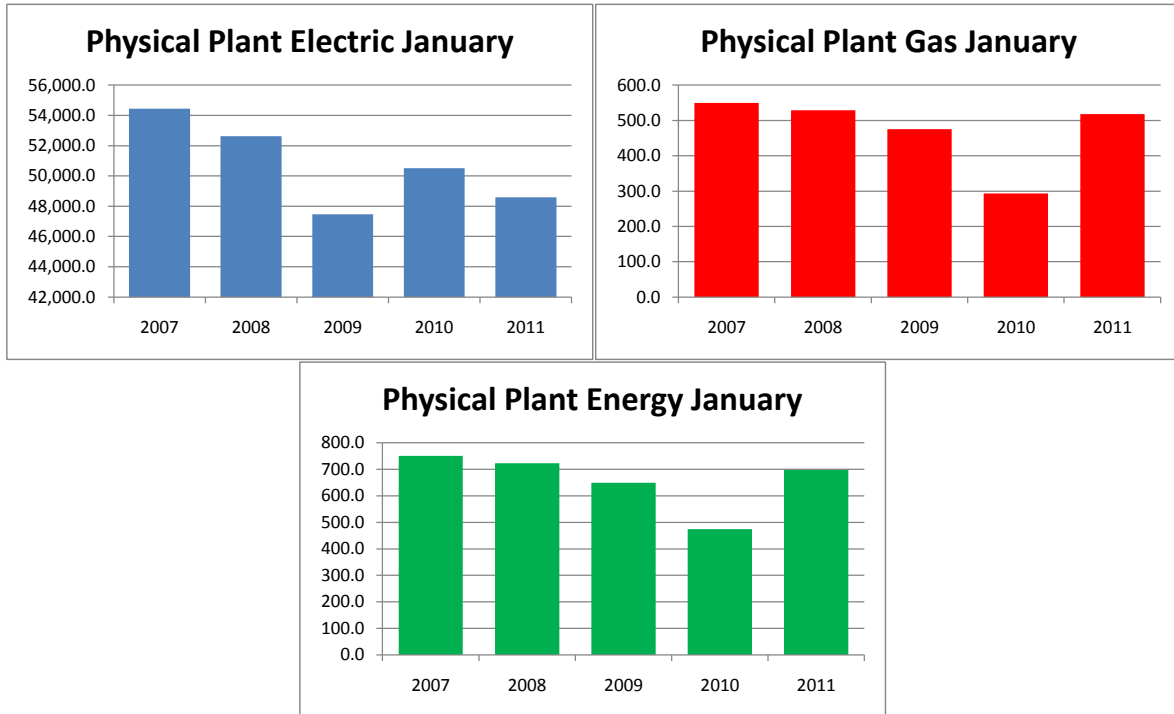


Monthly Energy Report

Physical Plant

January, 2011

This month, Physical Plant used 48,584 kWh of electricity and 518 MCF of gas, for a total of 698 MMBTU of energy use. This is a 47% increase in total energy use from this month last year and a 13% increase from the three-year average. Electricity costs for this month were \$3,838 and gas costs were \$3,316 for a total cost of \$7,154.



In the last 12 months, Physical Plant has used 522,467 kWh of electricity and 2,627 MCF of gas, for a total of 4,480 MMBTU of energy use. This is a 2% decrease in total energy use from the previous 12 months. Electricity costs for this year were \$41,275 and gas costs were \$16,810 for a total cost of \$58,085.

