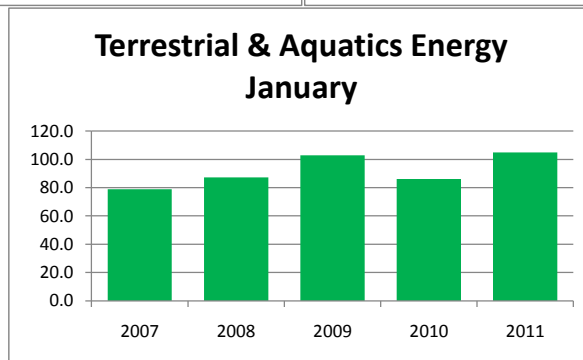
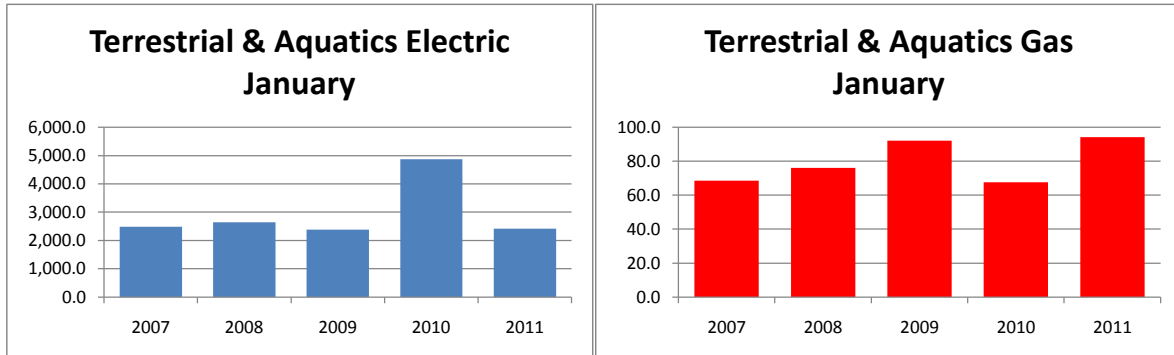


Monthly Energy Report

Terrestrial & Aquatics

January, 2011

This month, Terrestrial & Aquatics used 2,415 kWh of electricity and 94 MCF of gas, for a total of 105 MMBTU of energy use. This is a 22% increase in total energy use from this month last year and a 14% increase from the three-year average. Electricity costs for this month were \$191 and gas costs were \$602 for a total cost of \$793.



In the last 12 months, Terrestrial & Aquatics has used 34,794 kWh of electricity and 368 MCF of gas, for a total of 496 MMBTU of energy use. This is a 3% increase in total energy use from the previous 12 months. Electricity costs for this year were \$2,749 and gas costs were \$2,354 for a total cost of \$5,102.

