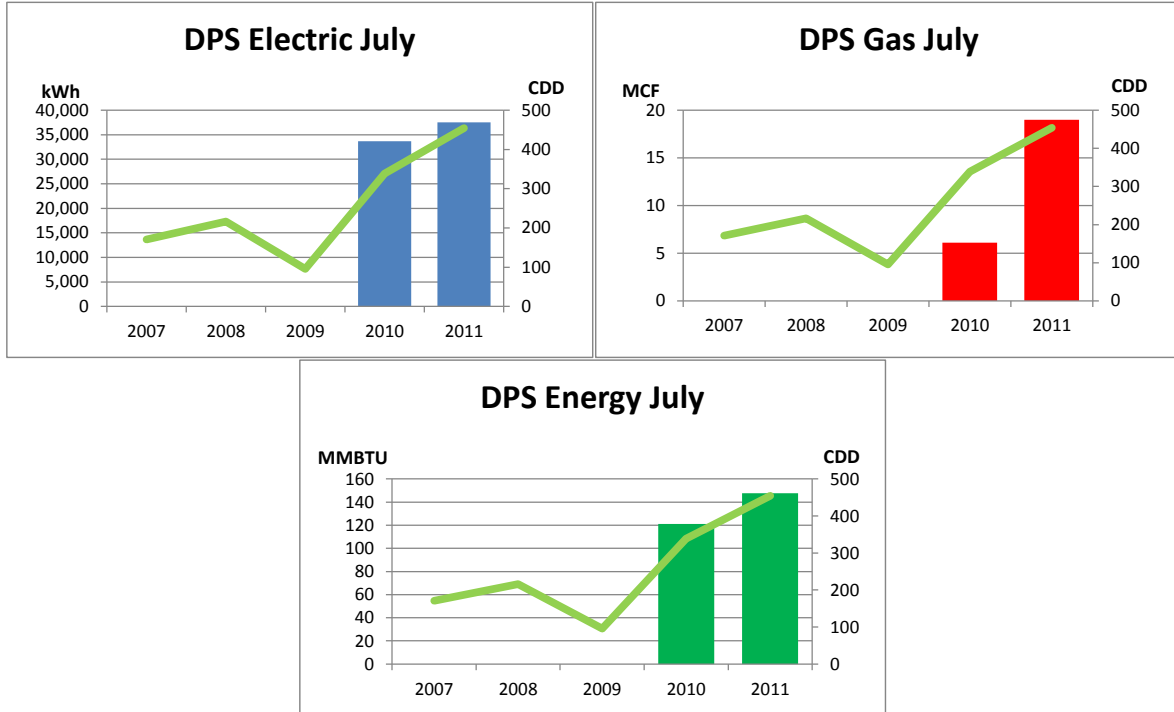


Monthly Energy Report

DPS

July, 2011

This month, DPS used 37,541 kWh of electricity and 19 MCF of gas, for a total of 148 MMBTU of energy use. This is a 22% increase in total energy use from this month last year and a 266% increase from the three-year average. Electricity costs for this month were \$2,966 and gas costs were \$122 for a total cost of \$3,087.



In the last 12 months, DPS has used 328,000 kWh of electricity and 1,193 MCF of gas, for a total of 2,345 MMBTU of energy use. This is a 7% increase in total energy use from the previous 12 months. Electricity costs for this year were \$25,912 and gas costs were \$7,638 for a total cost of \$33,550.

