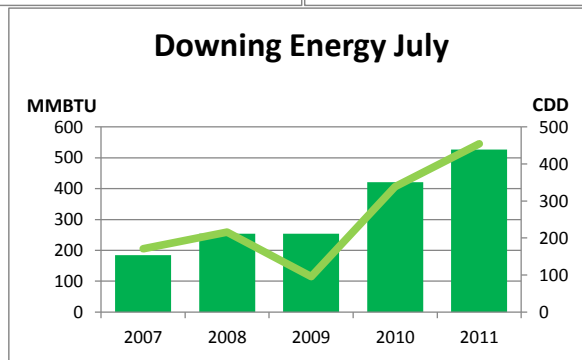
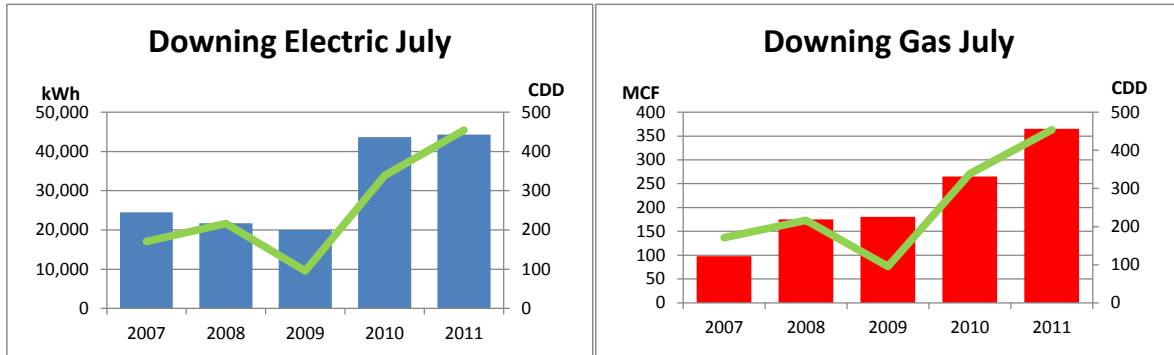


Monthly Energy Report

Downing

July, 2011

This month, Downing used 44,269 kWh of electricity and 365 MCF of gas, for a total of 526 MMBTU of energy use. This is a 25% increase in total energy use from this month last year and a 70% increase from the three-year average. Electricity costs for this month were \$3,497 and gas costs were \$2,339 for a total cost of \$5,836.



In the last 12 months, Downing has used 448,935 kWh of electricity and 9,968 MCF of gas, for a total of 11,769 MMBTU of energy use. This is a 11% increase in total energy use from the previous 12 months.

Electricity costs for this year were \$35,466 and gas costs were \$63,795 for a total cost of \$99,261.

