

Monthly Energy Report

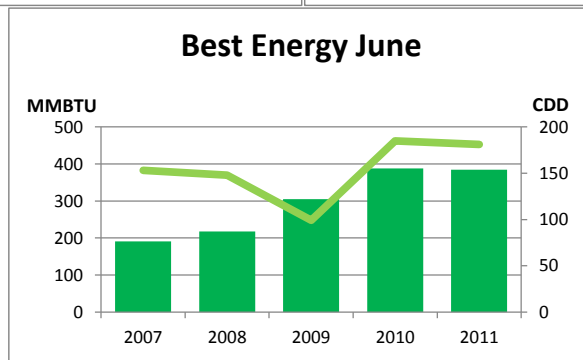
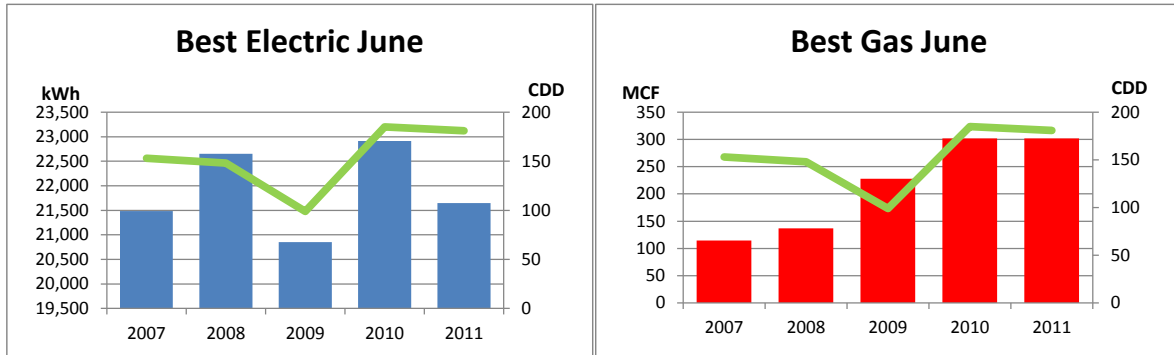
Best

June, 2011

This month, Best used 21,649 kWh of electricity and 302 MCF of gas, for a total of 384 MMBTU of energy use.

This is a 1% decrease in total energy use from this month last year and a 26% increase from the three-year average.

Electricity costs for this month were \$1,710 and gas costs were \$1,933 for a total cost of \$3,643.



In the last 12 months, Best has used 387,241 kWh of electricity and 9,748 MCF of gas, for a total of 11,332 MMBTU of energy use. This is a 9% increase in total energy use from the previous 12 months.

Electricity costs for this year were \$30,592 and gas costs were \$62,387 for a total cost of \$92,979.

