

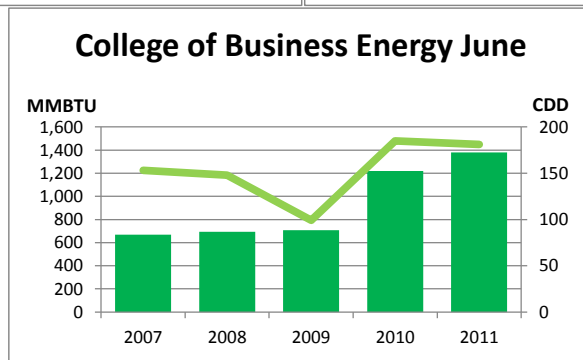
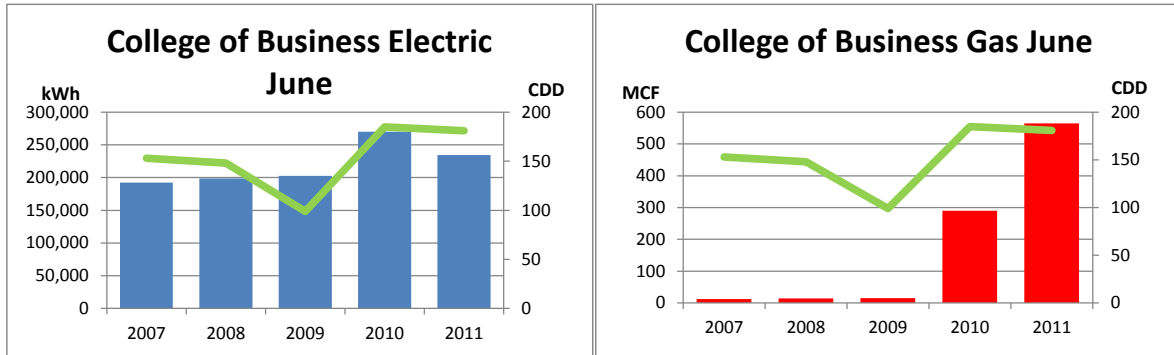
# Monthly Energy Report

College of Business

June, 2011



This month, College of Business used 234,560 kWh of electricity and 565 MCF of gas, for a total of 1,381 MMBTU of energy use. This is a 13% increase in total energy use from this month last year and a 58% increase from the three-year average. Electricity costs for this month were \$18,530 and gas costs were \$3,616 for a total cost of \$22,146.



In the last 12 months, College of Business has used 2,291,440 kWh of electricity and 11,525 MCF of gas, for a total of 19,655 MMBTU of energy use. This is a 35% increase in total energy use from the previous 12 months.

Electricity costs for this year were \$181,024 and gas costs were \$73,762 for a total cost of \$254,786.

