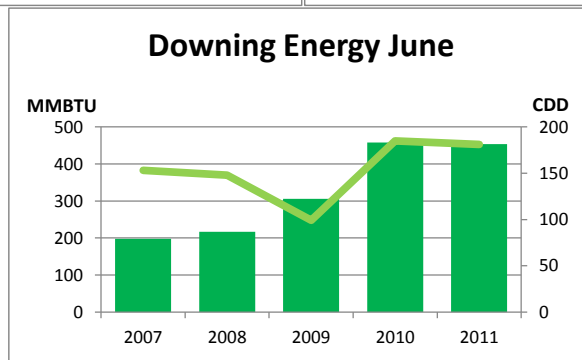
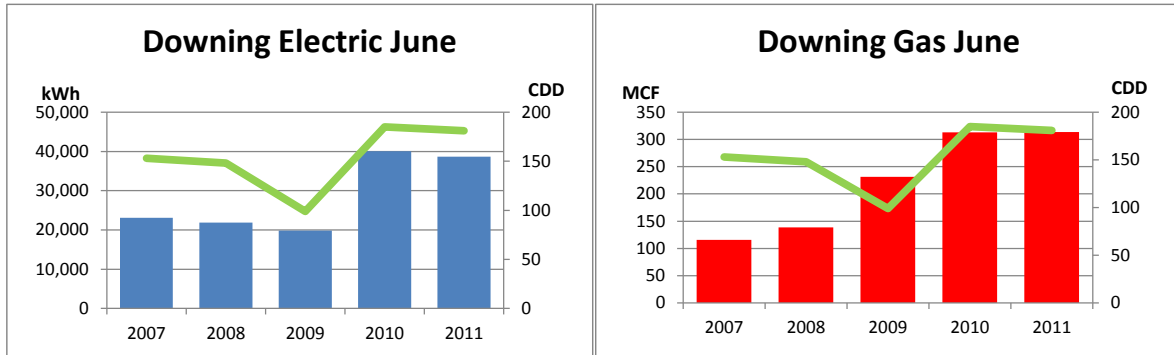


# Monthly Energy Report

## Downing

June, 2011

This month, Downing used 38,636 kWh of electricity and 313 MCF of gas, for a total of 454 MMBTU of energy use. This is a 1% decrease in total energy use from this month last year and a 39% increase from the three-year average. Electricity costs for this month were \$3,052 and gas costs were \$2,005 for a total cost of \$5,058.



In the last 12 months, Downing has used 448,297 kWh of electricity and 9,867 MCF of gas, for a total of 11,663 MMBTU of energy use. This is a 12% increase in total energy use from the previous 12 months.

Electricity costs for this year were \$35,415 and gas costs were \$63,151 for a total cost of \$98,567.

