

Monthly Energy Report

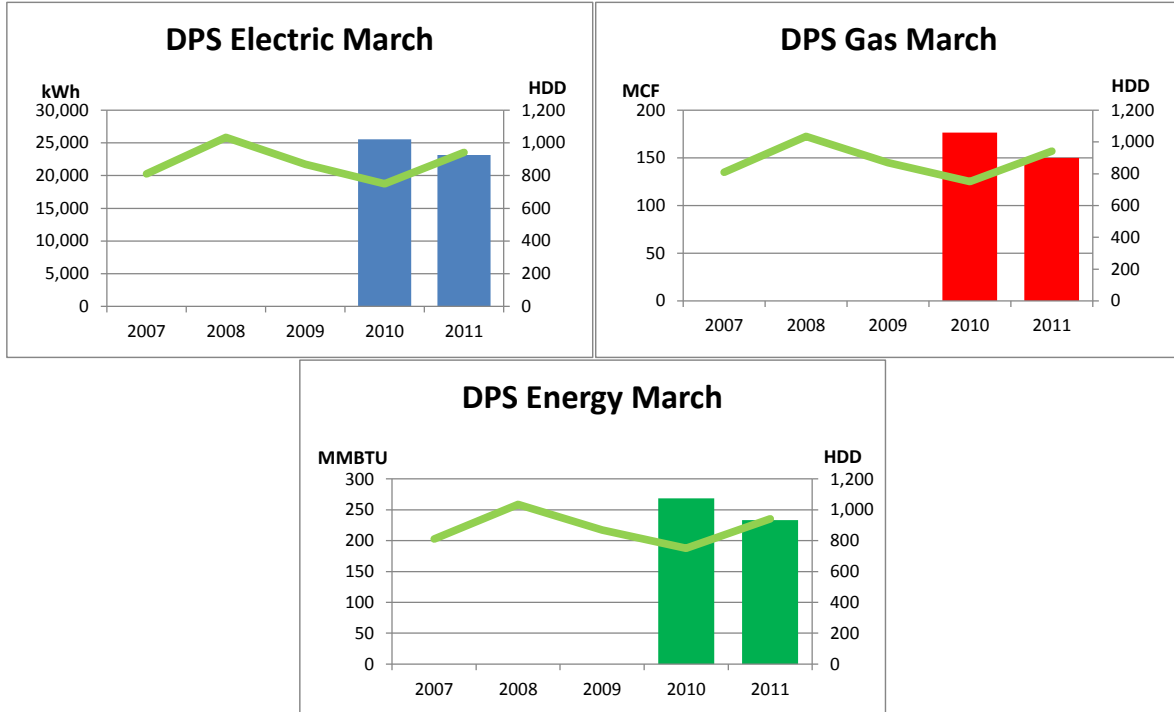
DPS

March, 2011

This month, DPS used 23,166 kWh of electricity and 150 MCF of gas, for a total of 233 MMBTU of energy use.

This is a 13% decrease in total energy use from this month last year and a 160% increase from the three-year average.

Electricity costs for this month were \$1,830 and gas costs were \$960 for a total cost of \$2,790.



In the last 12 months, DPS has used 321,663 kWh of electricity and 1,119 MCF of gas, for a total of 2,247 MMBTU of energy use. This is a 39% increase in total energy use from the previous 12 months.

Electricity costs for this year were \$25,411 and gas costs were \$7,164 for a total cost of \$32,575.

