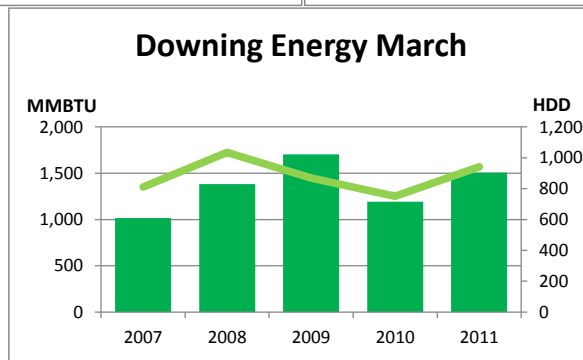
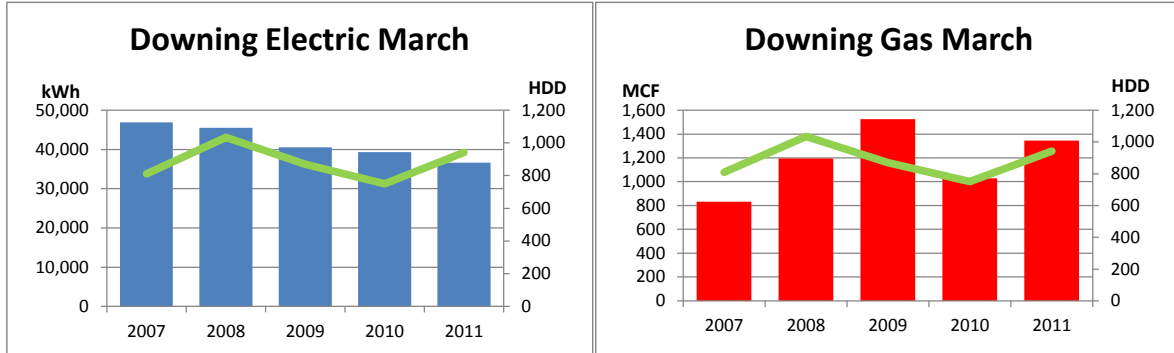


Monthly Energy Report

Downing

March, 2011

This month, Downing used 36,645 kWh of electricity and 1,344 MCF of gas, for a total of 1,505 MMBTU of energy use. This is a 26% increase in total energy use from this month last year and a 6% increase from the three-year average. Electricity costs for this month were \$2,895 and gas costs were \$8,602 for a total cost of \$11,497.



In the last 12 months, Downing has used 454,896 kWh of electricity and 9,441 MCF of gas, for a total of 11,248 MMBTU of energy use. This is a 9% increase in total energy use from the previous 12 months. Electricity costs for this year were \$35,937 and gas costs were \$60,421 for a total cost of \$96,358.

