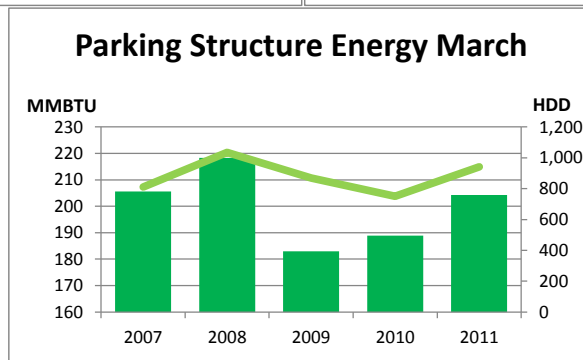
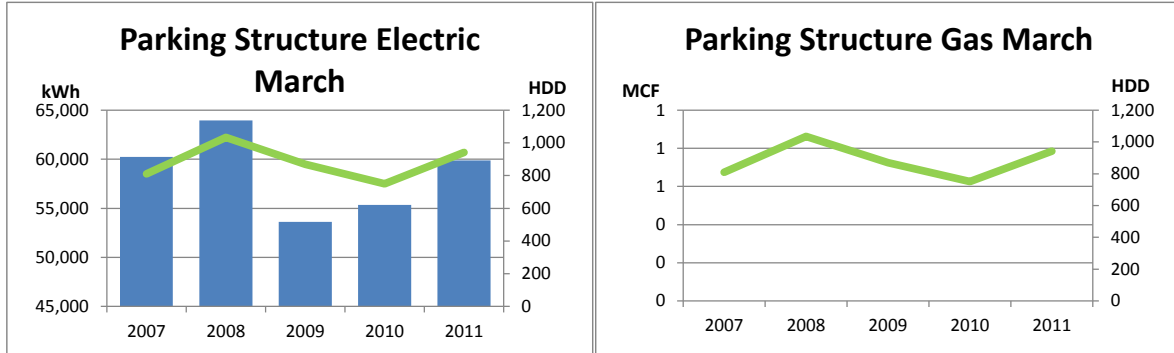


# Monthly Energy Report

## Parking Structure

March, 2011

This month, Parking Structure used 59,877 kWh of electricity and 0 MCF of gas, for a total of 204 MMBTU of energy use. This is a 8% increase in total energy use from this month last year and a 4% increase from the three-year average. Electricity costs for this month were \$4,730 and gas costs were \$0 for a total cost of \$4,730.



In the last 12 months, Parking Structure has used 602,820 kWh of electricity and 0 MCF of gas, for a total of 2,057 MMBTU of energy use. This is a 10% increase in total energy use from the previous 12 months. Electricity costs for this year were \$47,623 and gas costs were \$0 for a total cost of \$47,623.

