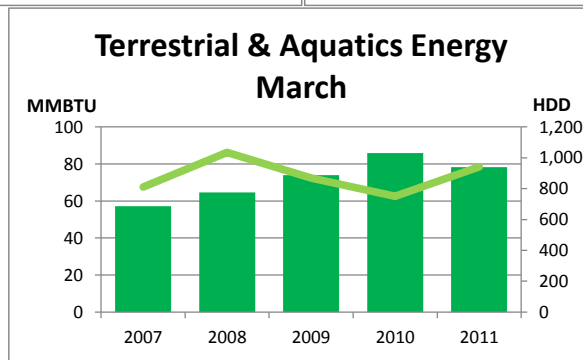
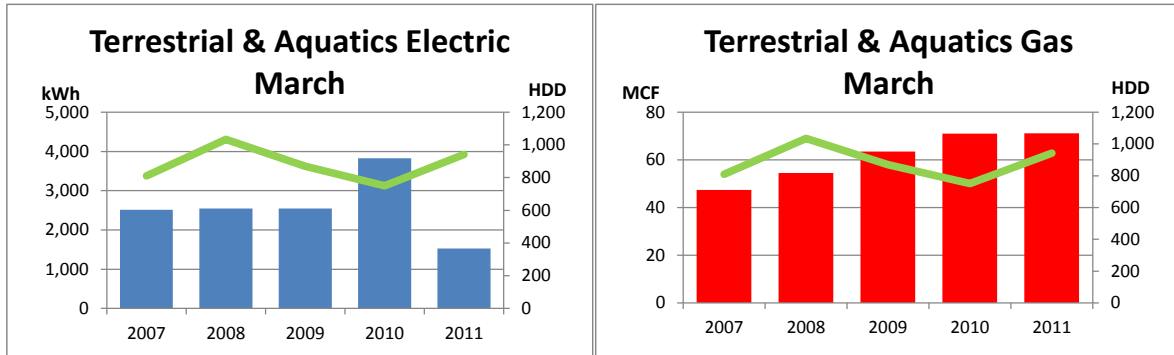


# Monthly Energy Report

Terrestrial & Aquatics

March, 2011

This month, Terrestrial & Aquatics used 1,527 kWh of electricity and 71 MCF of gas, for a total of 78 MMBTU of energy use. This is a 9% decrease in total energy use from this month last year and a 5% increase from the three-year average. Electricity costs for this month were \$121 and gas costs were \$455 for a total cost of \$576.



In the last 12 months, Terrestrial & Aquatics has used 30,663 kWh of electricity and 370 MCF of gas, for a total of 484 MMBTU of energy use. This is a 3% decrease in total energy use from the previous 12 months. Electricity costs for this year were \$2,422 and gas costs were \$2,367 for a total cost of \$4,789.

