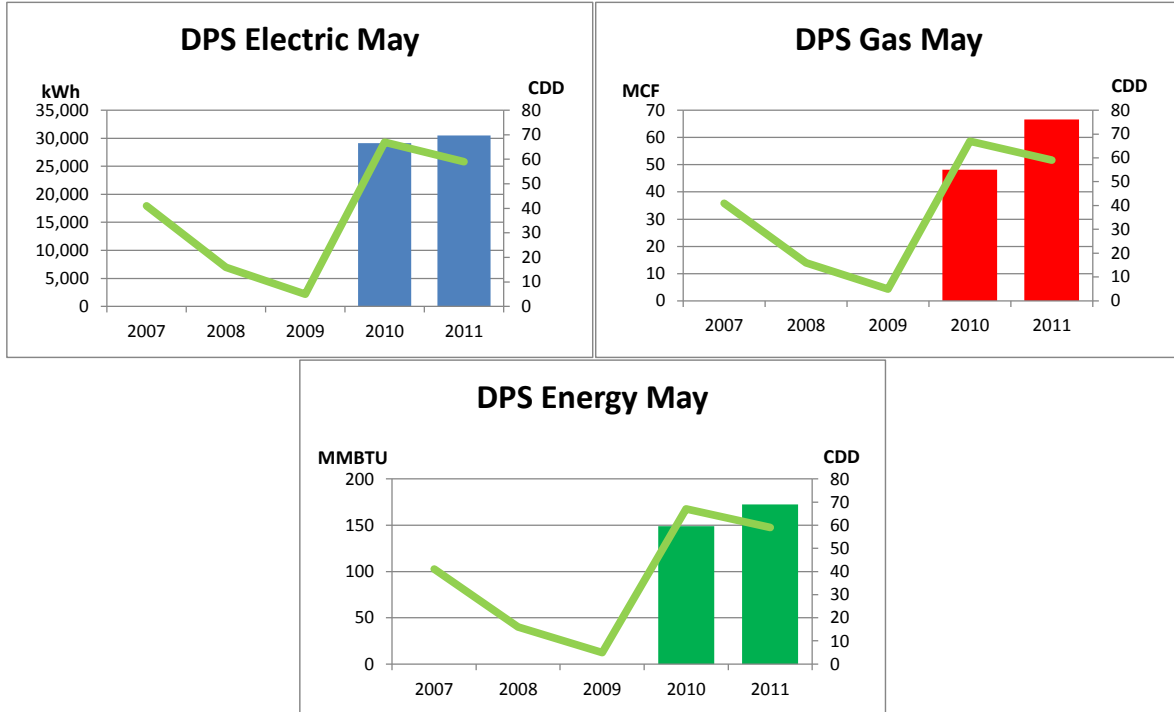


Monthly Energy Report

DPS

May, 2011

This month, DPS used 30,513 kWh of electricity and 67 MCF of gas, for a total of 173 MMBTU of energy use. This is a 16% increase in total energy use from this month last year and a 248% increase from the three-year average. Electricity costs for this month were \$2,411 and gas costs were \$426 for a total cost of \$2,837.



In the last 12 months, DPS has used 320,877 kWh of electricity and 1,174 MCF of gas, for a total of 2,300 MMBTU of energy use. This is a 18% increase in total energy use from the previous 12 months.

Electricity costs for this year were \$25,349 and gas costs were \$7,513 for a total cost of \$32,862.

