

Geographic Information System (GIS) & Remote Sensing Courses Winter Semester 2004

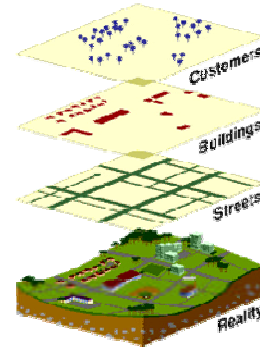
ESSC 276 Principles of Geographic Information Systems 3Cr
 23314 Lecture/Lab Tuesday/Thursday 9:30-10:45AM

ESSC 475 (Computer Mapping—old name)
 Geographic Info Systems3 Cr
 26531 Lecture/Lab.....Tuesday Thursday..... 12:30-1:45PM

ESSC 485 Remote Sensing 3Cr
 24153 Lecture/Lab Thursday 5:30-8:10PM

GEOG 579 Geographic Information Systems 2 Cr
 23243 Lecture/Lab Thursday 5:30-7:10p

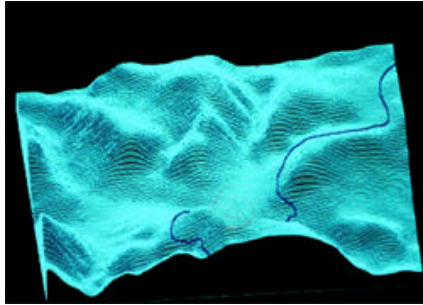
GEOG 668 GIS Project 3 Cr
 23250 Lecture/Lab Monday 5:30-8:10p



GIS Undergraduate Minor in the Department of Geography is now implemented

ESSC 276 is an entry level course for those with no prior GIS experience, and COE students with an interest in exploring how to make maps in a computer based environment.

ESRI online courses will be a key component of 276 and 476.



Arcview 3x for 276 and Arcview 8x for 476.

For more information, please visit the Department of Geography website, or contact: cmayda@emich.edu