

Safety & Security
Senior Administrators
Meeting

Eastern Michigan
University

October 10, 2007

Agenda

- Introductions
- Update on the 16 Safety & Security Strategies
- Clery Act Update
- Crisis Management Plan
- Medical Emergency, Fire, Tornado
- Department of Public Safety
- Personal Safety
- Key Policy
- Executive Director of Public Safety Search

Presenters

Janice M. Stroh – Vice President for Business & Finance

Jeff Nesmith – Lieutenant in Department of Public Safety

Ellen Gold – Executive Director of University Health
Services

Kathryn Wilhoff – Director for Health and Safety

Candace Dorsey – Police Officer in Department of Public
Safety

John Donegan – Associate Vice President – Facilities

Chad Crocker – Director for Facilities Maintenance

16 Safety & Security Strategies

Description	Due Date	Status
1. DPS Reports to VPBF		Completed
2. Clery Act Training		Completed
3. Safety & Security Audit	10/31/07	In Process
4. Bi-Weekly Campus Incident Report		Completed
5. Crisis Communication Policy	12/31/07	In Process
6. Review Emergency Response Plan	12/31/07	In Process
7. Safety & Security Forums	10/31/07	In Process
8. Personnel Training Capacity	9/30/07	In Process
9. Communication & Media Systems		Completed

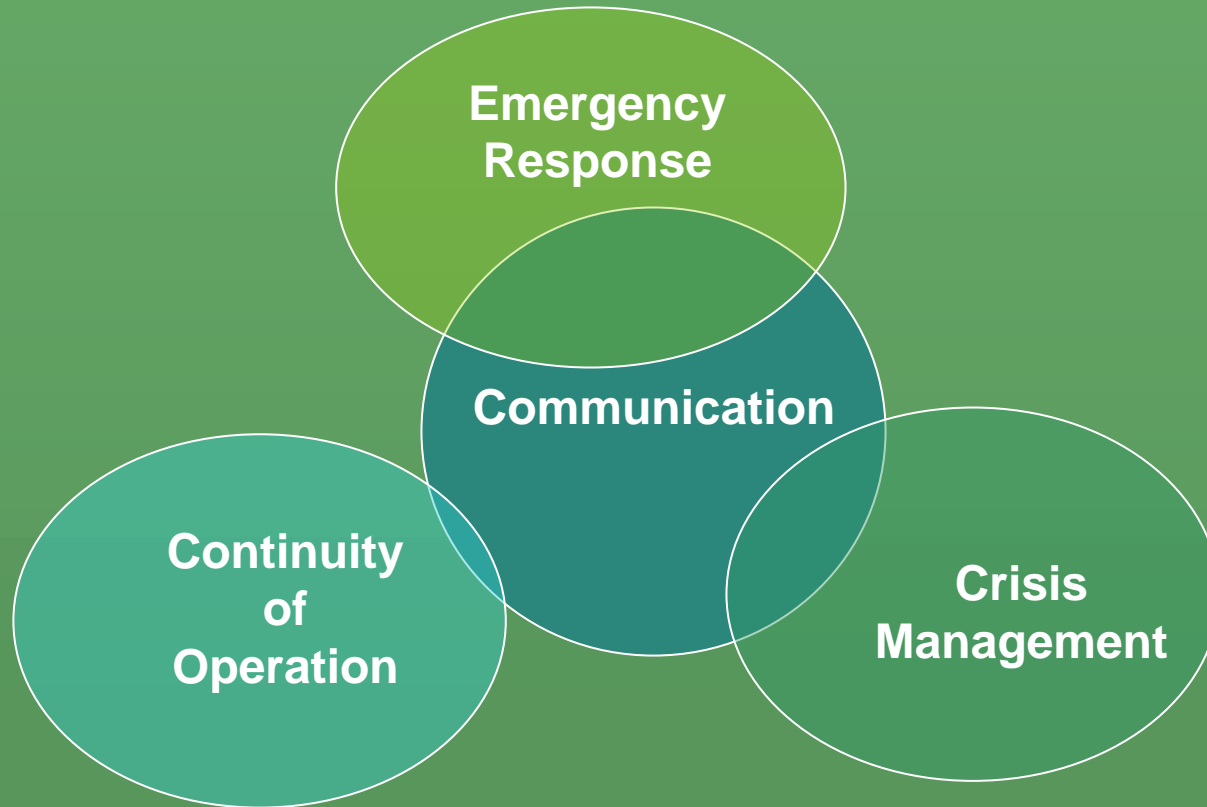
16 Safety & Security Strategies

Description	Due Date	Status
10. Designate individual to oversee execution of Butzel Long and D.O.E. reports		Completed
11. Establish campus committee to review & recommend plan		Completed & on-going
12. Initiate thorough review, identify gaps, create stronger policies & procedures		In Process & on-going
13. Rigorous review of 'At-Will' employment policy		Completed
14. Initiate efforts to value and promote honesty, transparency, civility, collaboration and trust.		Completed & on-going
15. Redirect campus Safety Awareness Committee to president; refine purpose, responsibilities & expectations		Completed
16. Engage YPD and WCSD to improve safety & security on & near main campus		Completed & on-going

Clery Act Update

- The *Jeanne Clery Disclosure of Campus Security and Campus Crime Statistics Act*
 - Referred to as the *Clery Act*

Crisis Management Plan



Emergency Planning

- Current ERP (Emergency Response Plan) remains in effect
- Emergency Flip Charts
- Both are available from Health and Safety 7-0794

Medical Emergencies

- Call 9-1-1 (487-1222 from a cell phone)
- Report as much information as possible
- Keep the injured calm until DPS arrives

Medical Emergencies

- DPS Officers are trained in first aid and CPR
- DPS works in conjunction with the Ypsilanti Fire Dept. and Huron Valley Ambulance

Work Related Injuries

- Report them to Risk Management
- MWorks at the University of Michigan is EMU's Workers' Compensation care provider

Outdoor Warning Siren

- Most frequently used when a tornado warning is issued.
- Also used for hazardous spills and shelter-in-place warnings.
- Seek shelter indoors on the lowest level of the building away from windows and doors.

Outdoor Warning Siren

- No all clear is given. Listen to WEMU for all clear.
- 3 on EMU campus and 1 near Eagle Crest.
- Tested March – September on the first Saturday of the month

Alarms

- If it rings outside, go inside
- If it rings inside, go outside
- The sound of the outdoor warning siren and fire alarm will be on the Health and Safety web site soon

Fire Alarms

- Evacuate the building.
- Assemble at your department's designated meeting area and do a head count.
- Do not return until DPS or Ypsilanti Fire Dept. gives the all clear.

The Department of Public Safety

- Chief of Police
- 2 Lieutenants
- 4 Sergeants
- 16 Police Officers
- 1 Crime Prevention Officer
- 1 Detective/Police Officer
- 4 Police Dispatchers
- 6 parking personnel with 42 students
- 2 Environmental Health Professionals



Police Department

- EMU Police Officers have full law enforcement powers and responsibilities
- Operational 24/7
- Investigate and arrest by enforcing state laws and city ordinances

Police Vehicles

- 6 marked patrol units
- 7 police mountain bikes
- 1 marked golf cart
- 4 unmarked units



Police Department Dispatch Center



- Responds to all 911 and emergency requests on campus
- Police dispatchers communicate via radio with neighboring police agencies & physical plant personnel
- Monitors video cameras, surveillance systems and university alarm systems

Emergency Assistance Station



Positions held within the Police Department

- Bicycle Patrol Officers
- Field Training Officers (FTO)
- Police Detective
- Area Police Officers
- Community Student Officers (CSO)
- Evidence Technician
- Computer Forensics
- Crime Prevention Officer
- Fire Arms Instructors
- Self Defense Instructors
- CPR & First Aide Instructor
- Pressure Point Control Tactics (PPCT) Instructors

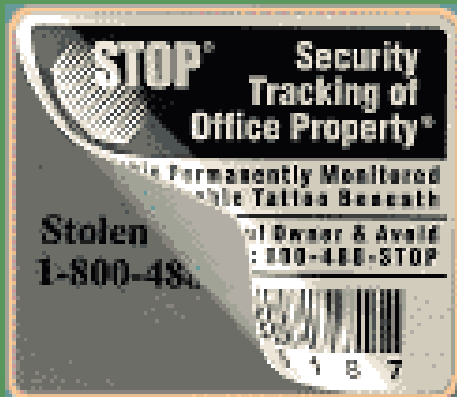
Community Relations

Crime Prevention Officer, Candace Dorsey
Crime Prevention Seminars

- Alcohol and Drug Awareness
- Campus & Personal Safety training for staff & students
- Building Security
- Commuter/Travel Safety
- Fatal Vision-Drunk Driving
- Stalking
- Identity Theft Protection
- Domestic Violence
- Property Engraving
- Date Rape
- U.V.I.D. Book Markings

Crime Prevention

- Rape Aggression Defense Systems (RAD) for Men & Women
- SEEUS (Student Eyes and Ears for University Safety) mobile, walking and escort program
- Stop Tags



Safety & Security Programming/Services

- Custodial Eyes and Ears Training
- Eagle Eyes Crime Watch Program
- Student Eyes and Ears for University Safety Program (SEEUS)
- Community Student Officer (CSO)

Police Safety Tips

- Secure personal items, lock your office doors and desk drawers when leaving the area
- Report all suspicious activities, questionable encounters or persons on University property
- Use SEEUS escorts
- Always take your EMU ID card and keys with you when leaving your office
- Be mindful of your personal safety when working late evening/early morning hours on campus

Police Safety Tips

- Program or dial the Police Department telephone number from your cellular telephone in the event of an emergency (734.487.1222)
- Dial 911 from campus telephones
- Take advantage of the personal safety programs offered by DPS
- List of specific Crime Prevention courses can be found on the DPS web site

DPS can be contacted @

- <http://www.emich.edu/publicsafety>
- 734.487.0982 (administration)
- 734.487.0987 (crime prevention)
- 734.487.1222 (dispatch or emergency)
- 734.487.0794 (health & safety)
- 734.487.3450 (parking)

Physical Plant

- Administrative Key Control and Building Access Policy

Key Request

- New form
- One person per form
- Acknowledgement of receipt and responsibility
- Key authorization authority

Key Issuance

- Register Pick-up
- Key Coordinator

Building Access

- Resident Life Access
- Contractor Keys and Building Access

Key Audit

- Key Inventory
- Records Verification
- Better Reporting
- Tighter key control and building security
- Deans/Department Heads

■ Questions???

**CAMPUS SAFETY IS
EVERYONE'S
RESPONSIBILITY**