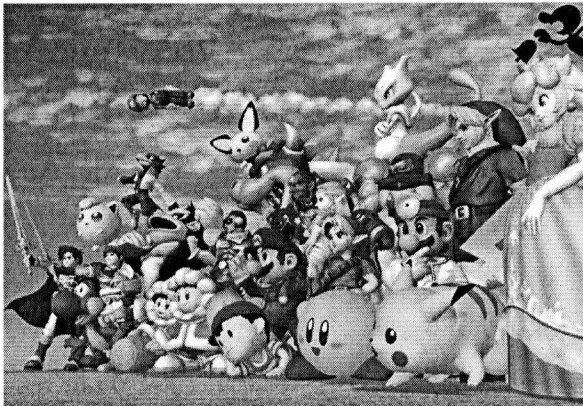


The Brothers of Lambda Phi invite you to:  
Section 53/55 Spring 2008 Bi-Sectional Conference

**Serving the Community since 1925...  
Saving the Princess since 1985**



**When:** April 11-13<sup>th</sup>

**Level:** Eastern Michigan University, Ypsilanti, MI

**Coins:** \$35 (includes T-shirt, \$10 late fee after Mar  
18<sup>th</sup> )

Make Checks Payable to: Alpha Phi Omega Lambda Phi

\$2 more for XXL or XXXL

Individual Registration can be found on the website

**Castle:** Comfort Inn

Contact them at 1-800-973-6101 to reserve your rooms. Costs are \$65 per night plus tax.

Say you are with Alpha Phi Omega when calling to reserve.

2455 Carpenter Rd. Ann Arbor, Michigan 48108

Block Expires \_\_\_\_\_

**Boss:** Katie Wilson & Kourtney Spaulding

**Website:** [www.emich.edu/studentorgs/apo/Sectionals.html](http://www.emich.edu/studentorgs/apo/Sectionals.html)