

Global Dimensions

World College • EASTERN MICHIGAN UNIVERSITY

Bringing Students from Around the World To EMU

By Joanne Hartmeyer

In January 2002, in keeping with my position in the Office of Research Development, I submitted a proposal to IREX, a U.S. State Department contractor, offering EMU as a host institution for stu-



School children in Samarkand, Uzbekistan. Photo courtesy of Boris Pilipenko.

dents from post-Soviet countries. I boasted about our variety of programs; touted our international campus; and volunteered a welcoming and supportive community for these brave young students. Little did I know that it would be the start of a relationship that would provide EMU with fellows, and me with incredible international opportunities of my own in the years to come!

EMU has since established respected relationships with the two prime international education contractors for the State Department, which has rewarded us with talented students who arrive on our campus eager to study and learn from us, unknowingly touch our lives, broaden our world and alter our focus. We have had 13 fellows in the last two years from the countries of Russia, Ukraine, Azerbaijan and Tajikistan and I can assure you that it is not “us” doing for “them,” but rather an enriching exchange from which we all benefit.

I have had the opportunity to conduct interviews of the semifinalists for IREX in their home countries – work that brings talented international students to our campus. To date, I have been to Russia, Ukraine, Kyrgyzstan and Uzbekistan. It has been an extraordinary experience working with the national staff, speaking with hundreds of college students, dining with them, touring countryside and universities with them, and joining their family’s dinner table. I have been the grateful recipient of big Russian hugs, welcoming toasts and kindness that overcomes any language barrier. In December 2003, IREX contacted me to ask if EMU would partner with them on a Middle East proposal to the State

Continued on page 5

World College Hosts Brown Bag Lunch Lecture Series

All faculty, staff and students at EMU who are interested in learning more about the impact of our increasingly global environment on the community are welcome to attend the World College Brown Bag Lunch lecture series, a forum where faculty, staff and experts from the community share their experiences abroad while networking with peers. The World College hosts presenters from many disciplines to encourage cross-departmental networking and information sharing. Please join us at the next scheduled lunch from **noon - 1 p.m.:**

September 22 – Claudia Petrescu (Political Science) Alumni Room, McKenny Union

October 12 – Brad Ensor (Sociology) Alumni Room, McKenny Union.

November 10 – Raymond Rosenfeld (Political Science) Tower Room, McKenny Union.

December 8 - Kathryn Orscheln (Admissions) Alumni Room McKenny Union.

January 26 – Ramesh Garg (Finance) Tower Room, McKenny Union.

February 16 – TBA March 16 – TBA

April 13 – Joanne Hartmeyer (Research Development) Alumni Room, McKenny Union

If you are interested in giving a presentation on an international topic, please contact the World College at 734.487.2414.

CONTENTS

Bringing Students from Around the World to EMU	1
World College Brown Bag Lunch lecture series ...	1
New Study Abroad Options	2
Director's Update	2
Bishop Brings European Educators to EMU	2
Global News @ EMU	3-5
Faculty and Staff Around the World	3-9
Research in India: EMU Outreach Librarian Goes to Pune and Rahimatpur	6
MSHROD Goes to China	7
Social Worker from Morelia, Mexico Visits EMU .	8
EMU Students Study in Derby	9
Other News from Around the World	10
Interesting Web Sites	10
Travel Discounts for Faculty Members	10
Partner News – ESIDEC	11
Opportunities for Faculty and Administrators Abroad	11
International Services Offices at EMU	12
Announcements	12

New Study Abroad Options

During winter break, 41 EMU students participated in these new programs:

Power, Place and Image in Florence and Rome led by **Ron Delph**, History

Art in Mexico City, Benita Goldman, Academic Programs Abroad

Literature in London, David Geherin, English Language and Literature

Hospitality Management in London, Susan Gregory, Hotel and Restaurant Management

In addition there are two other new short-term programs:

International Business and French Language and Culture, at our partner school ESIDEC in Metz, France (June)

Aviation in England, Tim Doyle, Aviation Management (July)

We hope that by creating more affordable programs we will be able to attract more EMU students to study abroad. We have also recently added semester programs in Brazil, Spain, Czech Republic, Ghana and South Africa. For those students who prefer to go on study tours, we still have the three-week, five-week and 10-week versions of the cultural history tours.

Director's Update

I think it is heartening to see that the international momentum on the EMU campus is growing despite all the budget concerns! Well, what is new? Already in the '80s I learned how to "internationalize on a nickel." The internationalization process is well on its way and that is how it should be on a campus in the 21st century. A lot can be done even on a low budget.

The last two years the graduates from the ICCI (International Cultural Competence Institute) have greatly helped in the process by taking responsibility for the International Week programming in their departments and service units. This has helped bring the International Week to the forefront. There were so many fantastic lectures, roundtables, films, slide shows, a soccer game, an ethnic lunch for hundreds of students and a concert during that week. Imagine a piano concert where an international student is playing four-handed with an American student on a grand piano! The concert was so appropriately called *Hands across the C's*. I hope they will do it again!

The International Week is truly becoming "institutionalized" when individual departments take responsibility for the programming. Thank you! The UN luncheon was a big undertaking and a huge success which pulled staff and students together with folks from the community.

Just take a look at this issue of *Global Dimensions*. It really gives you a wide sample of international events and activities on our campus.



Margareta O'Connell

Bishop Brings Eastern European Educators to EMU

Joe Bishop, Teacher Education, recently received word of receipt of a "Partners in Education" grant from the American Councils for International Education. While the country of origin of the visitors will not be known for a few weeks, this grant will bring seven educators from eastern Europe to EMU for five weeks next fall to develop curricula to promote democratic citizenship in secondary schools in their country. While here, the visitors will live with local families and spend two days each week in local secondary classrooms. They will attend cultural events and local civic activities and also participate in a variety of workshops dealing with democratic theory and practice as well as active teaching methods. Bishop will visit the area this summer for an initial meeting with the educators. After their tenure at EMU, the visitors will return home where they will test their new curricular materials and disseminate them at a two-week workshop with Bishop during the summer of 2005. One additional component of the program is that two local secondary teachers will travel to eastern Europe for two weeks during the pilot phase of the project in order to examine local schools and to continue to develop ongoing relationships between their U.S. school and counterparts in eastern Europe.

Bishop received a similar grant this past year and EMU hosted seven educators from Ukraine in October and November of 2003. During their time in the area last fall, the visitors drafted almost 40 lessons that can be used in Ukrainian secondary schools to promote tolerance, critical thinking and other elements critical for building democracy.

Continued on page 11

Japanese Cultural Appreciation Night

The Japanese cultural appreciation show and dinner, held in McKenny Union Ballroom on November 22, 2003 was a celebration of Japanese music, martial arts and food. Around 200 diners were treated to a presentation of traditional Japanese musical instruments: performances on bamboo flute, shamisen (a lute-like instrument) and piano; and judo and kendo demonstrations. In addition, the participants could learn more about Japanese arts and society by visiting cultural presentation booths all around the Ballroom. Welcoming remarks by **Betsy Morgan**, head of Foreign Languages and Bilingual Studies, and **Motoko Tabuse**, head of Japanese Language, rounded out the evening. The event was sponsored by the Japanese Student Association who provided the food and unique entertainment.

Diwali Celebrated at EMU

EMU celebrated Diwali, the Indian Festival of Lights, November 1, 2003 with Diwali Dandiya Dance Nite in the McKenny Union Ballroom. Dandiya dancing and a lighting ceremony were part of the night's events to celebrate the Hindu New Year.



A ceremony of light to celebrate Diwali

Dandiya is a traditional west Indian circle dance that is popular for many young people. The event was organized by the EMU Indian Student Association.

Gatherings of Asian Women of Eastern (AWE)

Last semester, a group of women who identified themselves as women of Asian heritage gathered to form a social network at EMU. With the acronym of AWE, the social gathering takes place at the Multicultural Lounge about once a month for lunch and sharing of refreshments from 11:30-1 p.m. The women include graduate students, staff and faculty who want to enjoy and share each others' company and conversation about life, career and family. There is no such thing as being late and when you arrive, you are on time! While there is no designated leadership, more information about scheduled gatherings can be obtained from **Gerry Panelo**, 487.3045, **Dibya Choudhuri**, 487.7120, ext. 2690, or **Diana Wong**, 487.6823.

International Week Celebrates Diversity and World Culture

International Week is a week devoted to the celebration of cultures. It is a week devoted to the study of societies and geographic regions. International week is devoted to raising awareness of challenges, issues and crises around the globe. It is a time to celebrate, study and discuss the enormous and symbiotic diversity of the world in which we all exist.

Continued on page 10

Faculty and Staff Around the World

Leslie Atzmon, Art, conducted research in London on late Victorian fantasy illustrators in July 2003 subsidized by a Kress Foundation international travel grant in the history of art. Atzmon is working on an edited collection of visual culture essays entitled *Visible Culture*. The book will have nine essays written by scholars from the U.S. and the U.K. The collection, expected in late 2005, will include one essay by Atzmon plus another she will co-author with graduate art student Lori Young. Atzmon is also in the midst of planning an annual graphic design workshop for EMU students at Kingston University in London. The program is expected to begin summer 2005.

Joe Bishop, Teacher Education, traveled to Mexico City from October 28 to November 2, 2003 to participate in the American Educational Studies Association conference. While there, he presented a paper on cognitive style and perceptions of technology in an undergraduate social foundations of education course. He also served as the discussant in a session on literacy, evaluation and social education in the 21st century.

Morell Boone, Communication Technology, traveled to San Paulo, Brazil November 23-25, 2003 where he visited the three campuses of Anhembi Morumbi Universidad and gave a presentation to SEMESP, an association of the private universities of Brazil, on leading edge library design elements and his recent work on the new AMU library. Travel was supported by the Department of Interdisciplinary Technology Fund and the World College.

Faculty and Staff Around the World

Jean Bush-Bacelis, Management, traveled to Tianjin, China from Feb. 20 to March 3 and April 19 to May 1, 2004 to teach the first course (MGMT 505) in the joint degree program of EMU's MSHROD with Tianjin University of Commerce.

Sock H. Chung, Information Systems, traveled to five universities in the Korean cities of Pohang, Seoul, ChongJu, Pusan and InChon in July 2003 to present his research on current global dimension of IT practices in the U.S. and Canada. Support was provided in part by CIS.

Christine Clark, Geography and Geology, traveled to Winnipeg, Manitoba, Canada from May 10 to Aug. 15, 2003, to collaborate on research into the tourmaline mineral group and the rare-earth pegmatite field of southeastern Manitoba. She was welcomed by the University of Manitoba's Department of Geological Sciences and the research was supported by NSERC grants to Drs. Frank Hawthorne and Petr Cerny at the University of Manitoba.

Ron Delph, History, traveled to Italy from February 20-28, 2004 to teach 18 students a class titled *Power, Place and Image in Florence and Rome*, one of the new APA winter break programs. Students visited numerous museums and churches including St. Peter's Basilica, the Vatican Museum and the Uffizi Galleries. Students also enjoyed the Italian atmosphere and food, most notably gelato.

Alhassane Diallo, Finance, traveled to Fachhochschule Karlsruhe (FHK) in Karlsruhe, Germany for a week in July, 2003 where he participated in the computer-based international operations simulation game as an observer and support staff from the Export Academy.

Continuing Success of the World College BBL's



The World College's Brown Bag Lunch lecture series began a new year when **Dr. Marcia Bombyk** of Social Work (center) and College of Business students from Russia, **Galina Hoyt** (left), and **Bella Verdiyany** (right), presented "Social Consequences of the Political and Economic Restructuring in Russia," January 28. Brown Bag Lunches are held once a month in McKenny Union from September through April. Everyone is welcome to attend.

Public Administrators From Germany Visit EMU



As part of a tradition that started nine years ago, a group of 12 public administration students and professors from Fachhochschule Kehl, Germany paid a visit to the Department of Political Science on February 5th, 2004. The Department of Political Science in collaboration with the World College has organized a seminar and a lunch for the group. As part of the event, **Claudia A. Petrescu** gave a short presentation of the US nonprofit sector. The presentation was followed by an interesting discussion on a comparison between the German and the US nonprofit sectors.

Arab American Luncheon Starts Dialog on Campus



Kristine Ajrouch samples Arab traditional food at the luncheon.

The new EMU Arab American Faculty and Staff Association hosted a luncheon February 4, 2004. The luncheon's key note speaker was **Kristine Ajrouch**, professor of Sociology. Ajrouch stressed the importance of identity as a part of the Arab American experience in her research. "Identity is core to human experience," she said. Ajrouch talked about how she had observed groups of young Arab American students as they discussed how their lives were affected by being an Arab American. After the lecture small groups discussed issues of ethnicity, gender and what it means to be an American and then shared their findings. Food was catered by Exotic Bakeries of Ann Arbor. **Michael Ibrahim** played the oud, a precursor to the guitar.

Continued from page 1

Department. Together with **Betsy Morgan**, Foreign Languages and Bilingual Studies, we put together a solid proposal for a Pre-Academic Institute and a plan to host 10 undergraduate degree students for two years. That proposal is still pending but more importantly, this is indicative of where State Department funding will be directed in the coming years. Our healthy relationship with these agencies positions us for partnership in these Middle East programs.

Most recently, IREX thought it might be interesting for me to experience Central Asia and, when offered the opportunity, I couldn't accept quickly enough. I was headed for Bishkek, Kyrgyzstan and then Tashkent, Uzbekistan, countries that are bordered by China, Kazakhstan, Turkmenistan, Afghan-



Joanne Hartmeyer at Issyk-Kul Lake in Kyrgyzstan.

Photo courtesy of Boris Pilipenko, Bishkek, Kyrgyzstan.

istan and Tajikistan. The highpoint of the trip? IREX staffer, **Boris Pilipenko**, took me to his family home in the village of Cholpon-Ata, in the Oblast of Issyk-Kul. Surrounded by Tien Shan mountain peaks, Issyk-Kul Lake is one of the largest and most beautiful inland salt lakes in the world. Most incredible was the afternoon spent with Boris and his family. A hands-on lesson in beekeeping by his father, a baby goat nestled in my arms, traditional foods prepared by his mother, sipping honey liqueur and sharing the universal language of laughter was an enriching experience. Upon returning from our frigid trek in the mountains and around the lake, we were greeted by his mother and a table of warm food and hot chai. Reluctantly, we departed for the four-hour drive through the mountains back to Bishkek, but not without first receiving warm hugs, invitations to return and a gift of hand-knit wool socks.

I close my eyes and remember my trip fondly, knowing that the places I have seen may be beautiful, but the people I have met are friends.

Donald Staub Receives AIEA Award for International Work

Each year the Association of International Education Administration (AIEA) presents the Harold Josephson Award to a deserving graduate student at one of its member institutions. This year, the award was presented to EMU graduate student and Director of the Office of Collaborative Education **Donald Staub** at this year's AIEA annual conference in Washington, D.C., Feb. 11-14. For over two years, Staub has acted as head of the COE committee for the international education. Over the past three months, he chaired the Midwest Regional Education Society, hosted by the COE at EMU, codirected two separate grants and led two projects which have brought educators from the Ukraine, Tajikistan, Azerbaijan, Moscow, Middle East and North Africa. He is also currently one of the leads on a project which will enhance knowledge and understanding of South Asia in nearby K-12 schools. He also recently completed a successful co-chairing of EMU's International Week 2003.

Faculty and Staff Around the World

John Dugger, College of Technology, traveled to National Changhua University of Education (NCUE) in Changhua City, Taiwan from March 27-April 4, 2003. He presented a paper, *Development Trends of Technological and Vocational Education in the U.S.A.* and a power point presentation, *Industrial Technology: Direction for the Future*. He signed a five-year agreement between NCUE and EMU to facilitate student and faculty exchange and strengthen technology programs in both universities.

Elizabeth Edwards, Marketing, traveled to Reutlingen, Germany; Metz, France; Karlsruhe, Germany; and Padova, Italy from October 31-November 16, 2003. The Bologna Declaration, agreed to by all E.U. countries, will change the structure of degrees at the university level in the E.U. Edwards discussed how this declaration may change the agreements between EMU and its partner schools in Europe. She attended the Fachhochschule Karlsruhe's 125th Anniversary Celebration, met with EMU Partners at ESIDEC (as part of the EMU/ESIDEC joint masters program), the University of Padova and the Export Academy at the Reutlingen University of Technology and Business. Travel to the University of Padova was self-financed with other travel funded by the World College.

David Geherin, Literature, traveled to London, England from February 21-29, 2004 to teach a class "Literature in London." Eight students were able to visit famous London literary sites such as Charles Dickens' house, the British Library and Shakespeare's Globe Theatre. The class also saw three theatrical productions. The class was one of the new APA winter break programs.

Research in India: EMU Outreach Librarian Goes to Pune and Rahimatpur

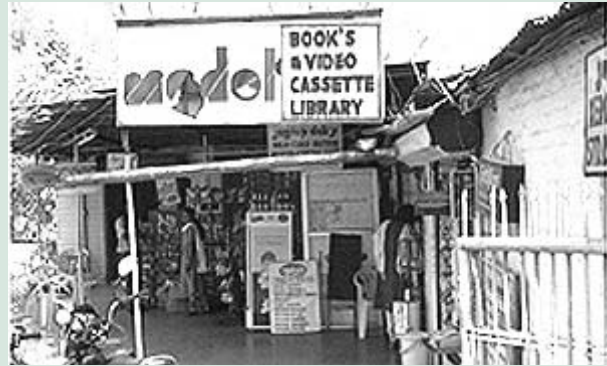
By Lisa Klopfer

A librarian spending a year in India? Doing research? This doesn't sound very likely. Librarians are supposed to be shy if not antisocial; certainly not adventurous types. Plus, even at EMU where librarians are members of the faculty, research rarely takes librarians out of their own buildings.

But here I am, an EMU librarian, in the state of Maharashtra, India doing research under the provision of an EMU Faculty Research Fellowship (FRF) and a professional development grant from the American Institute of Indian Studies funded by the National Endowment for the Humanities.

My interest was first piqued by my own students here at EMU. One of my teaching responsibilities in the library involved helping new students make the leap to using a university library. For incoming freshmen, the issues were usually ones of scale. For the international students, however, completely different questions cropped up, and it was these questions that sparked my interest.

Our international students are, on the whole, top performers in their own countries. They have persevered in the bureaucratic nightmare of transferring their academic documents from one system to another completely different system, and have worked through the thorny visa process, all of which would test the patience and confidence of most of us. In short, our international students are smart, tough and pragmatic. A large percentage of our international students come from India. They often speak two or more languages and have all had experience using libraries. It was quickly clear to me that our international students had different expectations of



An Indian commercial library

students use neighborhood commercial libraries.

These commercial libraries caught my attention because there is no exact equivalent in the U.S. They are somewhat like used book stores except customers may not keep the books. Customers pay a deposit and a monthly fee and this allows them to check out one or two books or magazines at a time. The collections range from thrillers and fashion magazines to literature in various languages, books by and about important leaders such as Gandhi, Tilak or Ambedkar, and spiritual works.

It was with these libraries in mind that I wrote my research proposal and traveled to India. I have divided my observations between two places: the city of Pune (pronounced and sometimes spelled "Poona") and a town called Rahimatpur. Metropolitan Pune has a population near 5 million, a good number of respected schools, colleges, universities and research institutes, dozens of government recognized libraries and libraries run by various nonprofit groups and around 150 commercial libraries. Rahimatpur,

"In short, our international students are smart tough and pragmatic."

— Lisa Klopfer, Ph.D., Information Services-outreach librarian

libraries than did our American students and were encountering different problems.

I learned that Indian university libraries are not open to all students. In order to use the library, students must complete an application, get official signatures and pay a deposit or extra fees. Also, undergraduate students in India are not expected to do any independent research in the library. In fact, some colleges won't give undergraduate students permission to use the library at all; they may do so only under the signature of a professor and may only borrow books under the professor's name. On the other hand, to get their regular reading material Indian

in comparison, has an interesting history but in the 20th century has declined into a backwater town with, as far as I can determine, a couple of school libraries and only one independent library (run by a nonprofit trust).

In the course of this research, I met scores of fascinating people and I have encountered the warmest hospitality. I have learned to wear a sari and to converse at simple levels in the Marathi language. Above all, I have opened up a view of a vast new vista of library practices, which I look forward to sharing with fellow American librarians and everyone at EMU next fall.

The Year of the Wooden Monkey - 4702, MSHROD Goes to China

By Diana Wong

Chinese students are receiving an EMU education in Tianjin, China in the masters of human resource management and organization development program from the Department of Management in the College of Business. **Fraya Wagner-Marsh**, chair of the Management Department and director of the MSHROD-China program, and **Jean Bush-Bacelis**, Management professor, went to China on February 20, 2004. Dr. Wagner-Marsh administered the student orientation for the MSHROD program. Dr. Bush-Bacelis taught the first course, Management 505, Organizational Behavior and Strategic Communication in two five-day sections. She will return later in the semester for the second half of the course. **Dr. Mary Vielhaber** and **Dr. Diana Wong** will be traveling to teach two courses in June, 2004. **Dr. Stephanie Newell** and **Dr. Linda Isenhour** are scheduled to teach in the fall semester. The program provides exciting opportunities for growth and participation in the internationalization process at Eastern Michigan University.

The Department of Management and Continuing Education at Eastern Michigan University (EMU) formed a joint partnership with Tianjin University of Commerce (TJUC) in Tianjin, China to present a graduate program in human resources management and organization development in China. This is the first human resource management masters program approved by the Chinese government. The purposes of the masters of science in human resources management and organization development (MSHROD) in China are to develop human capabilities for Chinese economic reform and modernization; to promote the economic trading relationship; and to provide cultural and educational exchanges between China and the U.S. At the same time, the joint venture provides mutual benefits for EMU to implement one of the six major strategic initiatives, which is to internationalize the campus. The MSHROD program is a U.S.-based program taught in English at TJUC. While contributing to the development of human resource management capabilities in China, EMU faculty members have opportunities to learn about an important U.S. trading partner and develop opportunities for research projects. For MSHROD alumni, the value of their degree is promoted with greater international recognition.

The MSHROD program in China involves a total of 12 HR and OD courses. EMU is responsible for sending faculty to teach seven courses and TJUC faculty will teach five courses. All courses will be taught in English. The courses taught by EMU faculty will take place in a compressed format of two five-day sessions or one 10-day session for a course with students and faculty using the Internet to supplement these face-to-face sessions. Students who do not have an undergraduate degree in business are taking 30 credit hours of business foundation courses before the MSHROD courses begin.

The MSHROD program in China is an exciting new development that contributes to the globalization process of EMU and the development of human resources management capabilities in China. U.S. alumni of the MSHROD program at EMU will have colleagues in China who share in the knowledge and skill base of the human resources management and organization development profession. For more information about the program, contact Fraya Wagner-Marsh, director of MSHROD-China program or Diana J. Wong, coordinator.

Faculty and Staff Around the World

Benita Goldman, APA, traveled to Mexico City, Mexico to teach a class "Art in Mexico City." Seven students took the class, which involved studying Mexican art from the Preclassic to the Modern periods. Students visited many museums, including the home of Frida Kahlo, where they studied the art and lives of Frida Kahlo and Diego Rivera. The class was part of the new APA winter break programs.

Susan Gregory, Hotel and Restaurant Management, traveled to London, England from February 20-28, 2004. Gregory taught a class titled "Hospitality Management in London" to five undergraduates students and three graduate students. As a part of the class students enjoyed tea and met with management from several five-star hotels and visited with fishmongers and food merchants while touring local fish, meat and produce markets where chefs select fresh ingredients. The class was a new Academic Programs Abroad winter break class.

Roy Johnston, Art, traveled to Paris and Brittany in France, June 25-July 16, 2003 to attend the opening of two important centenary exhibitions in Brittany devoted to Paul Gauguin and the School of Pont-Aven artists at the Musée de Pont-Aven and the Musée des Beaux Arts in Quimper. Johnston advised both museums on paintings by Roderic O'Connor (1860-1940). He also carried out research at the Centre de Documentation in the Pont-Aven museum and attended their international seminars and lecture program, participating in professional exchanges with other international colleagues and museum curators. Johnston will be guest curator of a proposed exhibition of O'Connor's paintings and drawings at the Centre Cultural Irlandais in Paris in 2005.

Faculty and Staff Around the World

Dean Lauterbach, Psychology, traveled to Vienna, Austria June 30-July 9, 2003 to present a paper titled *Examining the Personality-PTSD relationship using the U.S.-Based National Comorbidity Survey*. The paper was co-authored by Andrew Gloster, who is currently a student in the doctoral program clinical psychology.

Raymond A. Rosenfeld, Political Science, traveled to Ukraine from May 28-April 30, 2003 to lecture on public policy and consult on the master of public administration curriculum at the National Academy of Public Administration in Kyiv, Lviv, Odessa and Kharkiv. He traveled on a Fulbright Senior Specialist Grant from the U. S. State Department. Rosenfeld was also awarded a Fulbright Scholar Grant to lecture at the University of Latvia for five months in 2004 on *North American Economic Development and Local Government Restructuring EuroFaculty Program*.

Charles Simmons, Journalism, traveled to Porto Alegre, Brazil in January 2003 to give a presentation on community activism in Detroit at the World Social Forum.

Donald M. Snyder, Chemistry, spent the 2003 fall semester on an EMU sabbatical leave from September through December at the IRC Institute for Biomedical Materials, Queen Mary-University of London, conducting a research project on impedance-based biosensors in collaboration with Dr. Pankaj Vadgama, director of the institute. While working in London, Snyder also attended the European Biosensors Workshop annual conference held from October 3-10 in Menorca, Spain, sponsored by travel funding from Queen Mary-University of London.

Maria Luisa Tapia Zamudio, Social Worker from Morelia, Mexico Visits EMU

By **Elvia R. Krajewski-Jaime**

Under the sponsorship of the World College, the College of Health and Human Services, School of Social Work and the Institute for the Study of Children, Families and Communities, **Maria Luisa Tapia Zamudio** visited Eastern Michigan University and the Detroit area during the month of February 2004.

The relationship between Morelia Children's Hospital and Eastern Michigan University began during the annual spring Community Practice in Mexico Program, which was established in 1990 by the now School of Social Work and spearheaded by **Dr. Elvia R. Krajewski-Jaime**. The goal of the program is to strengthen intercultural understanding and professional practice for six weeks in community agencies such as hospitals, nursing homes, health care centers and other human, health and social agencies in Morelia, Mexico.

For 15 years, Zamudio has been a medical social worker at Morelia Children's Hospital Eva Samano de Lopez Mateos. In her childhood, as it is customary with many children and families in Morelia, Zamudio was a migrant worker who traveled every year to California with her parents during the farm picking season. Those years convinced her that migrant workers needed a professional to advocate for their well being, particularly in the health area. That experience propelled her to select social work as the training ground for advocacy work.

Detroit is home to one of the largest and fastest growing Mexican immigrant communities. Many of these families have immigrated from Zamudio's area in Mexico. During her two-week stay, she met with several EMU officers, lectured in several occupational therapy and social work classes and presented before several groups of faculty and students. Zamudio also presented at the Children's Hospital of Michigan, Organization of Latino Social Workers, National Association of Social Workers in Lansing, Mich. as well as at Michigan State University, University of Michigan, Western Michigan University and Grand Valley State University. In her multiple presentations, she provided information on the state of the art of social work in Mexico, the Mexican health care system, and the situation faced by migrant families in Morelia and the U.S., particularly on issues related to health care and human services.



Margareta O'Connell, Elvia Krajewski-Jaime, Maria Luisa Tapia Zamudio, David Clifford and Ronald Woods.

Orientation Week in Derby: A Firsthand Report

By Kevin Merrill

There we were, 10 EMU students and myself, EMU director of Advancement Communications, gathered in a class lecture hall on the main campus of the University of Derby, located several hours north of London. Scattered among us were students representing six other nations, as well as additional exchange students from the United States. We were taking the first steps together of a semester-long academic – and cultural – journey. But I couldn't get something off my mind as I listened to our British hosts explain the exchange program about to begin. "So, **that's** what English is supposed to sound like?"

And with my crash course in linguistics complete, my cultural awakening began. And it never stopped broadening, neither for me nor the students. In conversations, we shared our ever-growing lists of discoveries, such as the odd acceptance of "blood" as an adjective in food names or, as I discovered, the presence of functioning beer taps in the faculty cafeteria.

As a volunteer adviser for Academic Programs Abroad, my job during the Derby student orientation was twofold: ensure a successful transition for incoming EMU students, and represent Eastern Michigan University to Derby's administration and faculty. EMU's exchange program with Derby is relatively new. The group of students I traveled with – via planes, trains and, yes, automobiles – was only the second to represent EMU. Students from Derby are attending class in Ypsilanti, too. And while some details of the relationship are being still drafted, such as formalizing a process to review course equivalencies, the exchange is fully functioning and delivering on the promise of an unforgettable undergraduate experience.

I didn't realize how much Derby and EMU had in common until I spoke to faculty and administrators during my daily trips to campus. Each university has a high proportion of students driving to campus each day from surrounding towns, and many of those students are the first in their families to attend a university. And both Derby and EMU are trying to be more efficient in light of state or national funding freezes and cuts.

The students from EMU chose to enroll in this particular exchange program for many different reasons. Some were adventurers drawn by the rush of a new experience. Others found the lure of English museums and countryside irresistibly alluring. And still others found the proximity to the continent an easy excuse to travel bohemian-style through the great capitals of Europe. But all were equally concerned about classes – making sure the credits matched up to majors and minors back home – and first learning the way to the library before the nearest pub.

As the days passed, my role diminished as the orientations drew to a close and the students got their bearings and became more comfortable with their surroundings. During this time, however, I became more aware of my own nationality, speech patterns and mannerisms.

And I think **that** is the fundamental transformation that exchanges are designed to produce. Through immersion in the customs, cultures, foods and languages of others, you develop a heightened appreciation of what it's like to be different, to stick out. And because of that newfound sense, you become more aware of the invaluable role that a smile or outreached hand plays in removing barriers and bridging cultures.

Faculty and Staff Around the World

Richard Stahler-Sholk, Political Science, served as a human rights observer in Chiapas, Mexico in June-July 2003, as part of his ongoing studies of the Zapatista rebellion. In January 2004 he observed the 10th anniversary of the uprising in one of the new Zapatista autonomous regions.

Janice J. Terry, History and Philosophy, attended an international conference on human rights, democracy and the Middle East sponsored by the Middle East Centre, Eastern Mediterranean University in Northern Cyprus in April 2003. She presented a paper on civil liberties and human rights in the post 9/11 United States.

Norman Tyler, Geography and Geology, went to Belgium in July 2003 to present a paper on his WebPolis Consortium project to the joint conference of the Association of European Schools of Planning and the U.S. Association of Collegiate Schools of Planning. The trip was sponsored through a grant from the U.S. Department of Commerce.

Pat Williams-Boyd, Teacher Education, traveled to Athens, Greece from May 23-25, 2003 to present a paper entitled: *Social Services, Public Schools and the Poor: A Transformational Dialectic of Empowerment, Collaboration and Communitarianism: Historical Perspectives-Contemporary Response* at the fifth annual International Education Conference, Athens' Institute for Education and Research.



***Hands Across the C's* – A beautiful concert for International Week with EMU student pianists Michelle Chou and Stephanie Frantz**

MSU Global Access Web site

A useful tool

MSU Global Access provides links to Web resources selected in consultation with MSU's many internationally-engaged centers, institutes, offices and programs. It provides a starting point for those doing research on international issues, study-abroad participants preparing for their international experiences, gives the latest news from international news sources and information for anyone preparing to travel outside the U.S.

www.msuglobalaccess.net

Could This be True?

When the Icelandic President Ólafur Ragnar Grímsson gave the keynote address during Emory University's International Education Week in November 2003 he said, "I must tell you quite frankly that it is a little bit scary for us in Europe that evidence has shown that if you look at members of Congress here in the US that have been elected in the last four elections, more than 70 percent of them have never applied for a passport."

Continued from page 3

Eastern Michigan University's International Week (October 23-30) brought speakers from various parts of the world together with faculty, students and members of EMU's community for a week of celebration, study and discussion. Activities ranging from soccer games and music recitals to cultural discussions and international films helped the EMU community to celebrate cultural diversity and to recognize not only the problems and issues that exist in cultural relations but also the beauty, art and similarities which we all share.

"International Week 2003 at EMU was an amazing success," said Don Staub, director of Collaborative Education and organizer of the event. "When you see the number and quality of events organized throughout the week, it's obvious that internationalization is spreading far and wide across the campus." The kick-off event for International Week was the Comparative and International Education Society (CIES) midwest regional meeting. Speakers from various universities attended the conference, speaking on the topic of "Policy and Practice in a Shifting Global Environment." Tom Watkins, state superintendent of Instruction, was the keynote speaker. Attendance for the various events of International Week was higher than last year, pointing to a heightened interest (and involvement) among the campus community. "Advertising the events of International Week is very important so that greater awareness, and we hope participation, will occur next year," said Staub.

Interesting Web Sites

For more information on Tianjin China and EMU partner universities in Tianjin, visit: <http://english.enorth.com.cn/tianjin>. For information about travel in Tianjin, flights, visa requirements, customs specifications, embassies, consulates, tourist attractions and more, go to: www.travel.com.hk/china/tianjin.htm or www.chinaetravel.com/city/c002.html.

Interested in European higher education mobility trends? Go to: europa.eu.int.

Green Card holders must report new addresses to the INS within 10 days of moving. Form AR-11 can be found at: <http://uscis.gov/graphics/formsfee/forms/ar-11.htm>

Direct links to 6,324 universities in 169 countries: <http://geowww.uibk.ac.at/univ>. Search universities by discipline; 32,080 links are available: www.edvisors.com.

International opportunities for scientists and engineers: www.nsf.gov/pubs/2000/nsf00138/nsf00138.htm or www.nsf.gov/sbe/int/int_tbl.htm.

Research fellowships in Japan: www.nsf.gov/sbe/int/int_postdocs.htm#postjap.

AWARE – American Workforce and Research and Education: www.nsf.gov/sbe/int/eap/start.htm#aware.

Inexpensive international calls! See rates at: www.pt-1.com/101-6868_Rates_01.html

Travel Discounts for Faculty Members

Just as students can receive travel discounts using the International Student Identity Card, full-time teachers have access to similar benefits using the **International Teacher Identity Card (ITIC)**. Cards purchased in the United States include up to \$25,000 in insurance benefits, can be used as calling cards to access an emergency help line, to make low-cost calls from more than 110 countries, to set up a free e-mail account or to send and receive faxes. The ITIC offers discounts at cultural sites, museums, shops, hotels, entertainment venues, sporting events and restaurants as well as commission-free currency exchange and a currency buy-back rate guarantee. To view some of the discounts available, visit their Web site at: www.isic.org

Opportunities for Faculty and Administrators Abroad

Canada. The Faculty Enrichment Program, supported by the Canadian government, provides faculty members with opportunities to develop courses with substantial Canadian content. More information is available in the education section at www.canadianembassy.org or call the Canadian Embassy at 202.682.1740.

Central/Eastern Europe and Eurasia. The International Research and Exchanges Board supports research in the humanities and policy research and development. Applicants must be able to speak the host country language sufficiently to conduct advanced-level research. Go to: www.irex.org/sitemap.asp.

Germany. The German Academic Exchange Service (Deutscher Akademischer Austausch Dienst – DAAD) offers grants in all academic disciplines to scholars at U.S. institutions of higher education to pursue research at universities, libraries, archives, institutes or laboratories, learn German and participate in informational visits, guest lectureships or research fellowships in Germany. For more information, please visit: www.daad.org/1/faculty.htm.

Japan. EMU is a member of the Japan Center for Michigan Universities (JCMU). Faculty are eligible to apply for the JCMU Visiting Scholar Program. Scholars in this program live and research in Japan while teaching one undergraduate course. For application details, visit JCMU's Web site: www.isp.msu.edu/jcmu.

Japan in the U.S. The American Association of State Colleges and Universities is soliciting applications from faculty and administrators without previous training or professional experience in Japanese studies to develop strategies for incorporating Japanese studies into undergraduate education. For application details for this program, which is held in San Diego, Calif., go to: www.aascu.org/programs/jsi.

Scandinavia. The American-Scandinavian Foundation offers fellowships and grants to pursue research or study in one or more Scandinavian countries for up to one year. Awards are made in all fields. The application deadlines are generally in November of the year preceding the proposed research or study time. For up-to-date information, see the Foundation's Web site: www.amscan.org.

Sweden. The Swedish Foundation for International Cooperation in Research and Higher Education (STINT) supports the internationalization of Swedish institutions, offering institutional grants and stipends for faculty and post-doctoral students to teach or conduct research in Sweden. Please visit their Web site: www.stint.se.

Developing Countries – Rotary International. Rotary International provides grants for university teachers to teach in developing countries. For more information, visit their Web site: www.rotary.org/foundation/educational/un_teach/index.html or contact your local Rotary Club.

All Countries – Fulbright. Fulbright scholarships support research in more than 140 nations worldwide through short-term and long-term appointments. Programs for administrators and faculty are available. Please visit their Web site: www.cies.org.

All Countries – Women's International Science Collaboration. Grants are available to U.S. scientists to visit partner countries in order to establish research partnerships. The goal of the organization is to increase the participation of women in international research projects. For more information, visit their Web site at: www.aaas.org/international/wisc.

Partner News - ESIDEC

This summer EMU students have the opportunity to live in beautiful Metz in eastern France, three hours from Paris, while earning six credit hours. The program, organized by **Dr. Bertrand Agostini**, is sponsored by EMU's partner institution, the ESIDEC business school. Students can earn three credits in International Business and three credits in French Language and Culture. Classes alternate with visits to companies, governmental organizations, and historical sites. Since all classes (except French language) are taught in English, no knowledge of French is required. The program is open to all majors and provides an excellent opportunity for students to learn some French and find out about European political and business institutions at an affordable cost. More information can be found at, www.emich.edu/abroad/esidec.pdf.

Continued from page 2...

In a few weeks, **Gregory Queen** (Fitzgerald High School, Warren, Mich.) and **Juandamarie Gikandi** (West Middle School, Ypsilanti) will travel to Ukraine for the reciprocal visit from last year's project. Bishop will return to Ukraine in late June – early July 2004 to assist with the dissemination workshops which will be attended by approximately 25 teachers from eastern Ukraine.

The PiE program, funded by the Bureau of Education and Cultural Affairs, U.S. Department of State, supports the development of democratic structures throughout the world with money congressionally appropriated under the Freedom Support Act. Bishop said, "We look forward to hosting these visiting educators during the fall semester and are pleased that EMU can play a role in helping to build democracy in other regions of the world and in locally promoting international education."



As part of her job as an outreach librarian, Klopfer recommends the following sites for finding Indian research information:

Klopfer's home page:

www.emunix.emich.edu/~lklopfer/html/lib_myhome.html

American Institute of Indian Studies

www.indiastudies.org

Gifts for International Development

There are two EMU Foundation accounts that are very important for international development on campus. One helps EMU students going abroad and the other the World College's International Cultural Competence Institute (ICCI) that again will take place this year May 24-28. Please consider these programs when you donate money to EMU:

D 27400 World College Development Fund

D 61042 Emanuel Fenz Cultural History programs for spring/summer

International Services Offices at EMU

World College

Margareta O'Connell, director
 Marsha McDonald, senior secretary
 Jennifer Armstrong, graduate assistant
 103 Boone Hall
 Phone: 734.487.2414
 E-mail: world.college@emich.edu
www.emich.edu/worldcollege

Academic Programs Abroad

George Klein, director
 Justin Meilgaard, coordinator
 Benita Goldman, coordinator
 Jeremy Baldwin, coordinator
 Cheryl Guerra, senior secretary
 103 Boone Hall
 Phone: 734.487.2424
 E-mail: programs.abroad@emich.edu
www.emich.edu/abroad

Office for International Students

Paul Dean Webb, director
 Esther Gunel, assistant director
 Susmita Saha, advisor
 229 King Hall
 Phone: 734.487.3116
www.dsa.emich.edu/ois

International Admissions

Claudia Bean, assistant director
 Cecilia Barajas, admissions officer
 400 Pierce Hall
 Phone: 734.487.0205
www.emich.edu/admissions

English as a Second Language

Kim Anderson, program administrator
 219 Alexander
 Phone: 734.487.0338
www.emich.edu/public/esl/home.html

College of Business

Amelia Chan, assistant dean
 Undergraduate Student Advising
 401 Owen
 Phone: 734.487.2344

Jill Hemr, graduate adviser
 Graduate Student Advising
 404 Owen
 Phone: 734.487.4444

Announcements

FYI-ICCI

The World College's International Cultural Competence Institute will again be held this year, May 24-28, as a part of the effort to internationalize the EMU campus. Representatives from many departments and offices will participate.

Information for Future Issues of *Global Dimensions*

If you have a story or information that you would like to have considered for the next *Global Dimensions*, please submit it by September 1, 2004. You may submit a hard copy to Margareta O'Connell, 103 Boone Hall, Eastern Michigan University, Ypsilanti, MI 48197 or e-mail: margareta.oconnell@emich.edu.

This newsletter was edited by Jennifer Armstrong.