

**James H. Brickley Endowment for
Faculty Professional Development and Innovation**

Fall 2017 Award Winners



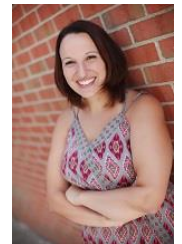
Crystal Coles (School of Social Work). “Gaining Insight Into Systemic Transitions in Child Welfare Through the Lens of Child Welfare Personnel.” \$1,000. Dr. Coles will use her award to fund a graduate student worker to assist in documenting nonverbal cues in 100 hours of qualitative interviews to explore the experiences of child welfare personnel in Southeast Michigan. The study will explore a population responsible for the well-being of abused and neglected children, and results could identify ways to better support a marginalized working population of social workers.

Margaret Dobbins (Department of English Language and Literature). “A Man Who Pays His Bills On Time Is Soon Forgotten”: Oscar Wilde’s Queer Economic Legacy.” \$1,400. Dr. Dobbins will travel to UCLA to uncover day-to-day financial records of Oscar Wilde—often considered incidental to his legacy—in order to prepare the final chapter of her work, *Queer Accounts: Victorian Literature and Economic Deviance*. Her research enriches our understanding of one of history’s most influential luminaries and reveals the enduring coextension of sexual and economic forms of queer difference in a capitalist society.



Cory Emal and Gregg Wilmes (Department of Chemistry). “Cicerone Certification: Faculty Preparation for a New Curriculum” \$1,295. Prof. Cory Emal and Prof. Gregg Wilmes will use the award to fund training to become Certified Cicerones. The certification will help the faculty members gain perspective and experience as they are the co-creators and principal faculty members of the new Fermentation Science program at EMU and are developing the curriculum for the joint EMU-Northern United Brewing Company (NUBC) brewing school in Midtown Detroit.

Audrey Farrugia-Bernard (Department of Special Education). “Special Education: From Michigan to Malta.” \$1,000. Dr. Farrugia-Bernard will travel to Malta for the Euro-Mediterranean International Conference on Disability Studies and Disability Activism. There she will forge connections between EMU and her international counterparts to build a multi-tiered, study abroad, academic service-learning, partnership program. In addition, at the conference she will conduct phenomenological interviews for a study that focuses on the perceptions of international faculty regarding accommodations for students with disabilities in higher education.

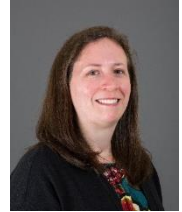


“The Brickley Award will allow me to update and revitalize the graduate optics laboratory... With this grant, our graduates will be better prepared to enter the workforce with relevant hands-on experience in the emerging field of fiber optics.” –Eric Paradis



Xianghong Feng (Department of Sociology, Anthropology, and Criminology). "Seeking Travel Funds to Conduct an International Collaborative Research: Community Participation and Poverty Reduction through Ethnic Tourism in China." \$1,000. Dr. Feng will initiate a new collaborative research project with the School of Ethnology and Sociology at Guizhou Minzu University to study community-based tourism and the sustainability of its equitable distribution of its benefits among villagers in the Langde Mio Village in China.

Olivia Ford (School of Health Sciences). "Dancing Tomatoes." \$1,000. Dr. Ford's award will fund the production and editing of four-part, video-based nutrition education program aimed at children ages 6-11. The production, which includes cooking demonstrations, will be facilitated by a dietetics graduate student and will be piloted at the local St. Joseph Mercy Hospital's family-based weight management program, ShapeDown.



Sam Fullerton (Department of Marketing). "Consumer Actions and Attitudes Regarding Initiatives Directed towards Sustainability." \$1,000. Sam Fullerton's award will support the collection of data from 800 US residents regarding their sustainable behaviors as consumers and their perceptions of corporations' behaviors in "green" initiatives. This research will further develop the understanding of green marketing.

Maria Luz Garcia (Department of Sociology, Anthropology, and Criminology). "Collaborative Development of Mayan Language Materials." \$1,000. Dr. Garcia's funding will support the production of a children's book as designed by her anthropology students. The books will help Mayan language-speaking children make the linguistic and cultural shift to living in the US. The books will be delivered in three languages, Ixil Mayan, Spanish, and English, and will be piloted in communities in Ohio that do not have recent histories of immigration.



Jeromy Hopgood (School of Communication, Media & Theatre Arts). "Initiating a Digital Media Commission for the United States Institute for Theatre Technology." \$1,200. Jeromy Hopgood will travel to the United States Institute for Theater Technology Conference, representing the Digital Media Commission as the newly elected Vice Commissioner of Education. Hopgood will be responsible for serving as liaison between his commission and other commissions and for initiating educational programming, media projects, and professional development workshops in the field of digital media design for live performance.

"This award supports not only me as a newer faculty member, but is helping provide an opportunity for a graduate student to gain valuable experience participating in the research process." –Olivia Ford

Andrey Kashlev (Department of Computer Science). “Strengthening Data Science & Analytics Program with Cloud Computing” \$1,000. Dr. Kashlev will receive training and two certifications: the Amazon Web Services (AWS) Certified Developer – Associate and the AWS DevOps Engineer – Professional. These certifications will help him enhance the teaching and resource knowledge needed for EMU’s newly developed Data Science and Analytics program and big data courses.



Tareq Khan (School of Engineering Technology). “A cloud based smart-expiry system using QR code.” \$998. Dr. Khan will develop a smartphone app that tracks and reminds consumers of expiry dates of consumable items in the home. The project will focus on using QR codes and cloud data storage to relay messages from products to grocery checkout to the user’s smartphone without the hassle of manual entry.

Deborah Laurin-Phelan (Department of Teacher Education). “The Pikler approach, Proximal Processes, and Child Care Theory: Re-envisioning Infant-Toddler Diapering Practices for nurturing the relationship.” \$1,036. Dr. Laurin-Phelan traveled to the October 2017 Pikler Meets Neuroscience Conference in Los Angeles to present her research on proximal processes in diapering. Her theory, specifically recommends the use of care routines as a main factor in infant and toddler pedagogy to promote child well-being.



Huei Lee (Department of Computer Information Systems). “Development of Complete Text Materials for Information Systems Audit.” \$1,000. Dr. Lee will purchase new auditing-/security-related software and hire a student assistant to test the hands-on exercises and format of text materials he has created for a university curriculum on information systems audits.

Dennis O’Grady (School of Communication, Media & Theatre Arts). “Teaching Practices that Support and Hinder the Success of Transgendered and Non-Binary Students.” \$1,000. Dennis O’Grady will conduct interviews within the transgender and non-binary population at EMU to aid in the professional development of faculty to support these students. He will hire a transgender or non-binary student to help assist with the research. He will purchase a voice recorder and contract transcription services with the remainder of his award.



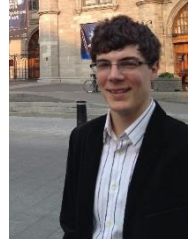
“The Brickley Award supported my travel to present at an international conference to introduce a theory of care and new research connecting care routines with neuroscience.”

–Debbie Laurin-Phelan

John Oswald (Department of Geography and Geology). “Invisible Divisions: Analyzing Urban Separation in Ann Arbor, Michigan.” \$931. Dr. Oswald will travel to the Association of American Geographers national conference in New Orleans to present his research and receive critical feedback to inspire future publications and course curriculum. Oswald’s research focuses on the identification of informal, “invisible,” social boundaries that develop within the formal boundaries of large communities. He will measure communal differentiation and socio-economic separation through the use of GPS data collection, Census data and social media analysis in Ann Arbor, MI.



Eric Paradis (Department of Physics and Astronomy). “Advanced Fiber Optics Lab.” \$950. Dr. Paradis will purchase fiber optic lab equipment to develop a new two-week lab as part of the graduate course, Modern Optics, which will introduce graduate students to various aspects of light transmission through fiber optic cables.



Delbert M Raymond (School of Nursing). “Risk of homelessness and characteristics of youth in detention homes.” \$1,050. Dr. Raymond’s award will support her research in understanding the impacts of transitional homelessness in detained youth at the Juvenile Detention Facilities of Wayne and Washtenaw countries. Funding will support incentives for survey participants, staff refreshments, and pay for a graduate student to manage data entry from the study.

Heather Shouldice (School of Music and Dance). “Purchase of Special Software for Teaching and Scholarly Activities.” \$350. Heather Shouldice will purchase a music notation software program, Finale, that will allow her to create music notations for use in the classroom and within her work to disseminate and illustrate key concepts related to her research on Edwin E. Gordon’s Music Learning Theory in professional presentations.



Samir Tout (School of Information Security and Applied Computing). “Strategy for Establishing a Self-Driving/Autonomous Vehicle (SD/AV) Research Practice at EMU.” \$800. Dr. Tout will take courses in achieving his Self-Driving Car Engineer Nanodegree to advance his knowledge in the Self-Driving/Autonomous Vehicle (SD/AV) field. As a result, he plans to create and implement a research strategy that will position EMU as a major player in SD/AV technology and security research.

Sarah VanZoeren (School of Social Work). “Developing Knowledge and Skills in Qualitative Inquiry.” \$1,000. Dr. VanZoeren will travel to the Fourteenth International Congress of Qualitative Inquiry to facilitate her professional development in areas outside of her specialty, quantitative research. She will utilize her knowledge from the conference to expand her research capabilities and classroom curriculum in the discipline of social work.

