



**EASTERN**  
MICHIGAN UNIVERSITY

INTERIOR DESIGN

**Designing for sustainability and well-being**





## Table of Contents

- 01** About Us
- 02** Bachelor in Interior Design
- 03** Curriculum
- 04** Curriculum
- 05** Student Work
- 06** Testimonials
- 07** Testimonials & Student Organization
- 08** Student Activities and Honors
- 09** Job Opportunities
- 10** Alumnus Testimonials & Facilities
- 11** Faculty

At Eastern Michigan University, we have always focused on helping students find their true passion. Founded in 1849 as a small teacher's college, EMU is a major learning and research institution with a distinct mix of comprehensive academic resources and strong community initiatives. We offer more than 200 undergraduate majors, minors and certificates, plus more than 150 graduate programs to our 16,000 students.



The GameAbove College of Engineering & Technology was established in 1980 and the college is housed primarily in Sill and Roosevelt Halls. The Interior Design Program is part of the Department of Visual & Built Environments. The Interior Design Program is located in historic Roosevelt Hall and began in the 1970's.



# BACHELOR OF SCIENCE IN INTERIOR DESIGN



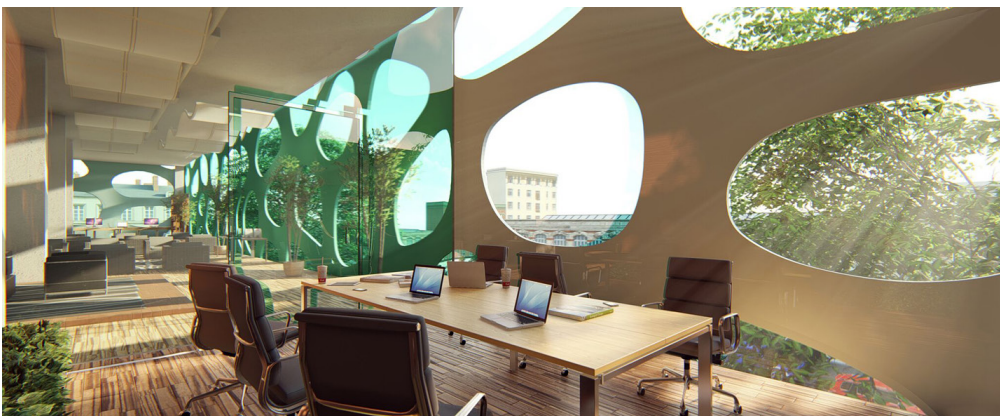
**Freshman Year - Marker and Ink Presentation**



**Sophomore Year - Studio Residential Design**



**Junior Year - Studio Office Design and Space Planning**



**Senior Year - Studio Adaptive Reuse Design**

## THE PROGRAM

- Accredited by the Council for Interior Design Accreditation (CIDA) and National Association of Schools of Art and Design (NASAD) as a testimonial to the quality of the program.
- Outstanding profession-oriented curriculum and required internship.
- Courses are taught by expert faculty and professionals with degrees in both interior design and architecture.
- Small studio class size with typically 18 students per class and lecture classes of 25-30 students.
- Computer facilities meet and exceed the needs of the profession.
- All students pay in-state tuition.
- Students are winning state and national competitions.

## MISSION

The mission of the Interior Design Programs at Eastern Michigan University is academic preparation of students to enable them to solve problems related to the function, health/safety/wellbeing, and quality of interior environments.

## APPLICATION

[www.emich.edu/cot/vbe/programs/ide/](http://www.emich.edu/cot/vbe/programs/ide/)





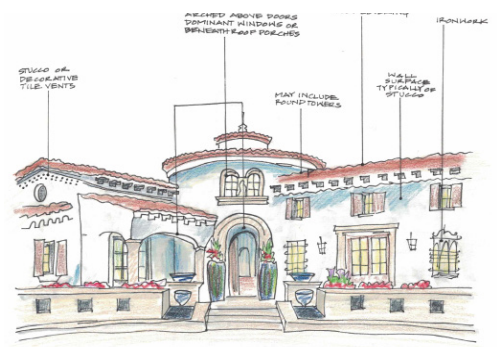
Environmental Psychology  
and Behavior



Materials section



Digital presentation



Analysis of Interior design history

## Freshman Year - Fall I

IDES 110 Interior Design Studio I  
IDE 111 Environmental Psychology and Behavior  
for Interior Design  
IDE 131 Interior Design Theory I  
ARTH 100 Art Appreciation

### General Ed Courses, such as:

CTAC 124 Foundations of Speech or  
KIRTG121 Composition II

## Freshman Year - Winter I

IDES 120 Interior Design Studio II  
IDE 121 Interior Design Materials and Components  
IDE 122 Interior Design Theory II  
IDE 123 Computer for Interior Design I

### General Ed Courses, such as:

GEQR Quantitative Reasoning or  
GEUS US Diversity

## Sophomore Year- Fall II

IDES 210 Interior Design Studio III  
IDE 219 Computer for Interior Design II  
IDE 225 History of Interiors from Antiquity to 1800  
CNST 201 Construction Systems

### General Ed Courses, such as:

GEKA Arts 1 or  
GEKA Arts 2

## Sophomore Year - Winter II

IDES 220 Interior Design Studio IV  
IDE 221 Environmental Systems for Interior Designers  
IDE 226 History of Interiors from 1800 to Present  
IDES 229 Building Information Modeling  
CNST 201 Construction Systems- if not completed fall



Interior Design Studio

## Junior Year - Fall III

- IDES 310 Interior Design Studio V
- IDE 317 Lighting Systems for Interior Designers
- IDE 318 Interior Building Codes and ADA
- IDE Elective I

### General Ed Courses, such as:

- GEKN Natural Sciences 1
- GEKN Natural Sciences 2



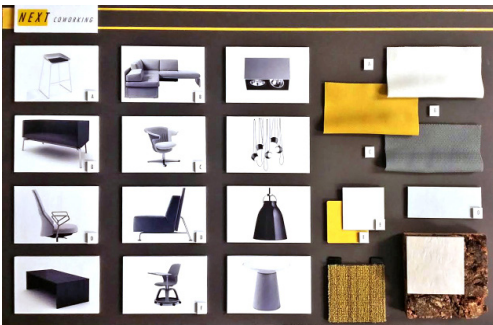
Fieldtrip for internship practice

## Junior Year - Winter IV

- IDES 320 Interior Design Studio VI
- IDE 325 Professional Practice in Interior Design
- IDE 326 Portfolio Development
- IDE 390L4 Internship in Interior Design

### General Ed Courses, such as:

- GEKS Social Sciences 1
- GEKS Social Sciences 2



Material board presentation

## Senior Year - Fall V

- IDES 410 Interior Design Studio VII
- IDE 425 Mill Work Design and Detailing
- IDE Elective II

### General Ed Courses, such as:

- GEGA Global Awareness
- GEKH Humanities 1 or
- GEKH Humanities 2



Digital Divas, recruiting event for middle and high schoolers

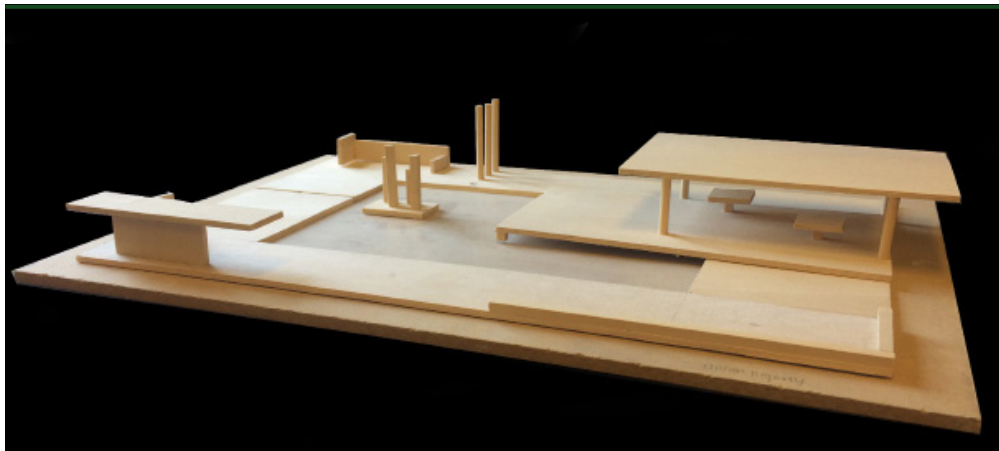
## Senior Year - Winter VI

- IDES 420 Interior Design Studio VIII
- IDE 430W Writing for Interior Design
- IDE 407 Sustainable Design/LEED

**Note: Fall IDE/IDES courses listed are ONLY offered Fall and those listed for Winter are ONLY offered Winter!**



# STUDENT WORK

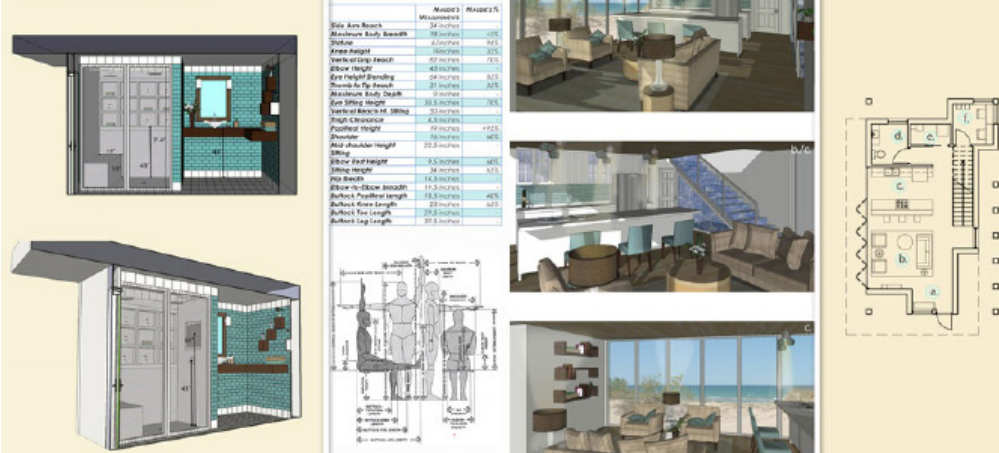


## Freshman Year

### Interior Design Theory I

The project was created based on the greek golden mean and Kevin Lynch theory of design.

SECOND FLOOR BATHROOM



## Sophomore Year

### Studio III

A residential design solution was proposed by each student for a client.



## Junior Year

### Studio VI

A hospitality design was proposed by each student. It was a renovation project of River Place of Detroit.



## Senior Year

### Studio VIII

University of Michigan Hospital, Brighton Center for Speciality care.

## Freshman Year



"I really like Eastern's well-laid-out curriculum and four-year course plan. It is easy to follow and offers students the ability to get started with design and studio classes right from the start. Eastern's program is also accredited and will allow me to get started with my career upon graduation. I visited campus to meet faculty, and even some students, during my college search and found everyone to be inviting, friendly, knowledgeable, and helpful. These factors all helped me make my final decision to choose Eastern!"

**Iana Mignano**  
**Class of 2026**

## Sophomore Year



"After receiving my Associates Degree in Psychology from Henry Ford College in 2010, followed by my Bachelors Degree in Communications/Marketing with a specialization in Public Relations from U of M in 2015, I decided to take a different path in life. As I was researching potential programs to go into, EMU's Interior Design program stood out among the rest. I intended on returning to U of M, but when I learned that EMU was one of the select schools to have the CIDA accreditation my choice was made. Not to mention hearing about all of the awards the school earns through its IDE students. I am currently in what would be my Sophomore/Junior year and I am thoroughly enjoying this experience. The curriculum is challenging, the Professors are beyond knowledgeable/ helpful, and I am excited for my career after I graduate."

**Michael Sprietzer**  
**Class of 2025**

## Junior Year



"The CIDA accredited Interior Design program at EMU is great! It's led by professors that love what they do and strive to push each student to their full potential so we're gaining skills we will use throughout our careers. We also go on fun and informative field trips that correspond with our studio projects. However, I'm glad I chose EMU because of the helpful professors that are really passionate. They are here to make sure every student is constantly improving and thriving"

**Avianne Cole**  
**Class of 2024**



# TESTIMONIALS & STUDENT ORGANIZATION

## Senior Year



"I chose to enroll in EMU's Interior Design program to help achieve my goal of providing creatively designed spaces while helping the future generation by incorporating sustainable practices into my design work. After researching CIDA accredited colleges, EMU provides the best in terms of professor engagement and offers design classes with content that can be directly applied to professional work outside of college. With a different studio project every semester, the program challenges the designer to think outside the box and to create new solutions for each project. Each semester is something to look forward too and I am excited to see what the next year has to offer."

**Branden Wylie**  
**Minor in Construction Management**  
**Class of 2023**

## Minor Choices

Interior Design majors may choose to minor in one of the following:

- Construction Management
- Business
- Sustainability
- And other minors upon request.

## Interior Design Student Organization

It was created a few years ago to generally cover all professional organization options. Students are also welcome to become a student member of ASID, IIDA, NKBA, USGBC, etc. There was a time when EMU had multiple student orgs through these groups and folks couldn't decide what meetings to attend.



Now they attend one meeting once a month with professional speakers or field trips. Some meetings involve juniors or seniors offering tips for studio projects. Meetings satisfy the Learning Beyond the Classroom, General Education requirement to attend events beyond coursework. If they independently join the other professional organizations, they may participate in those events

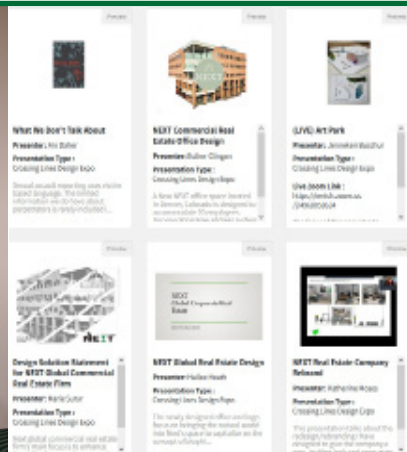


# STUDENT ACTIVITIES AND HONORS



## First Place : Karley Hass

The Ghiordes Knot 27th  
Student Creative Space  
Competition CET Awards  
Dr. Diane



## UG Symposium

Students participate in  
Eastern Michigan University  
2020, 2021 & 2022 Under-  
graduate Symposium

## STUDENT RENDERING

1ST: JILLIAN SITKIEWICZ, EASTERN MICHIGAN UNIVERSITY

2ND: KELSEY SHIELDS, EASTERN MICHIGAN UNIVERSITY

3RD: OLIVIA GRANT, EASTERN MICHIGAN UNIVERSITY



CET AWARDS

## CET Student Rendering Awards

Students win top three  
spots in the national CET  
Student Rendering Awards  
for three consecutive years  
(2019, 2020, & 2021)



## Field Work

Students visited the VA  
Hospital in Ann Arbor.

# JOB OPPORTUNITIES

Graduates are able to gain hands-on experience in both residential and commercial settings.

Graduates get jobs in a variety of fields including commercial design, residential design, design sales and green (LEED) design firms.

The Interior Designer can work in different positions, according to Indeed Website, such as:

Interior Designer  
Design Project Manager  
Design Consultant  
Design Sales Consultant  
Interior Design Specialist  
Showroom Consultant  
Teaching Faculty

The median annual wage for Interior Designers provided by the Bureau of Labor Statistics (BLS) was \$60,340 in May 2021.

Also, the Interior Designer can work in different environments, according to United States Department of Labor, such as:

Specialized design services  
Self-employed designers  
Wholesale trade  
Architectural, engineering, and related services

## Job Placement

For undergraduate graduates from last year in Interior Design at Eastern Michigan University (2021), 30% were employed in commercial design, 40% in residential design, and 10% in graduate school.

Companies/ Universities and Colleges where students are employed: Ghafari Associates, RTKL Associates, Gensler, dPOP, UM - AEC, UM - Housing, KSI Kitchen & Bath, Independent practice, Henry Ford Community College, Bowling Green State University, Jeddah International College (Saudi Arabia), King Abdulaziz University (Saudi Arabia).

GHAFARI

CALLISON RTKL

Gensler



SHERWIN-WILLIAMS.

L A Z B O Y®

RESTORATION  
HARDWARE

ILLUMINART  
A Division of Peter Basso Associates, Inc.

Steelcase





“EMU provides a personalized learning environment where you can work closely with the professors to gain architecture and interior design knowledge that enables the student to develop real life solutions to client needs. Space affects people’s behavior. Being a designer provides me with the ability to assist businesses with attracting talent, engaging their workforce, and improving collaboration.”

**Lisa Moore- DPOP**



“Eastern Michigan University provides a diverse environment for learning. The interior design program is a comprehensive representation of the real world design experience and prepared me for the success I have today.”

**Meaghan Short- VA Ann Arbor Healthcare System**

## Facilities

There are different types of classrooms to address the students needs. The computer labs are equipped with pc computers, ploters and printers. The students have access to different software such as Autocad, Revit, SketchUp, CET Designer, Rhinoceros, Photoshop, InDesign, Illustrator, 3Ds Max and others. There are three studio rooms where the students take IDE courses and develop their own projects. The Material Lab is inside two studio rooms. Students can find both residential and commercial materials for projects.



**Computer Lab-  
Roosevelt 213**



**Studio and Material Lab-  
Roosevelt 201**



**Studio-  
Roosevelt 211**



**Dr. Deb de Laski-Smith** ddelaski@emich.edu

Ph.D., Michigan State University

M.S, Michigan State University

Graduate Certificate in Gerontology from Michigan State University

Bachelor degree Adrian College in Interior Design

**Interests and Expertise:** Design experience and consulting work focused on residential design, geriatric spaces and special need environments.



**Dr. Diane Guevara** dguevara@emich.edu

Ph.D., Eastern Michigan University

M.S, Eastern Michigan University

BS, West Virginia University

**Interests and Expertise:** Analyzing work modes and workplace factors, planning, and designing corporate environment, Specialty in fit planning, Virtual reality display analysis based on the theoretical framework of the Model of Spatial Presence (MSP), Virtual Reality Spatial Presence Index (VRSPI), Evidence-based design in healthcare interiors

## Instructors:

Christine Kennedy	-	Architect/ Interior Designer
Karl Geil	-	Lighting Designer - Illuminart
Linda Mason	-	Interior Designer - University of Michigan
Michelle Belt	-	Interior Designer - Lawrence Technology University
Na Han	-	Lecturer - Eastern Michigan University
Stephanie Legg	-	Lecturer - Eastern Michigan University
Susan Haifleigh	-	Principal/Founder - DiaMonte Design LLC
Teresa Penix	-	Senior Interior Designer - University of Michigan Health System



## CONTACTS

Interior Design Program  
School of Visual and Built Environments  
206 Roosevelt Hall  
734.487.2490  
[interior-design@emich.edu](mailto:interior-design@emich.edu)

**College Advising Office/ Student Service**  
734.487.8659

**University Advising and Career Development Center**  
734.487.0400

