



EASTERN
MICHIGAN UNIVERSITY

INTERIOR DESIGN

SCHOOL OF VISUAL & BUILT ENVIRONMENTS

Designing for sustainability and well-being





Table of Contents

- 01** About Us
- 02** Bachelor in Interior Design
- 03** Curriculum
- 04** Curriculum
- 05** Student Work
- 06** Testimonials
- 07** Student Activities and Honors
- 08** Graduate Program Curriculum
- 09** Student Work and Testimonials
- 10** Job Opportunities
- 11** Alumnus Testimonials & Facilities
- 12** Faculty

At Eastern Michigan University, we have always focused on helping students find their true passion. Founded in 1849 as a small teacher's college, EMU is a major learning and research institution with a distinct mix of comprehensive academic resources and strong community initiatives. We offer more than 200 undergraduate majors, minors and certificates, plus more than 150 graduate programs to our 16,000 students.



The GameAbove College of Engineering & Technology was established in 1980 and the college is housed primarily in Sill and Roosevelt Halls. The Interior Design Program is part of the Department of Visual & Built Environments. The Interior Design Program is located in historic Roosevelt Hall and began in the 1970's.

BACHELOR OF SCIENCE IN INTERIOR DESIGN



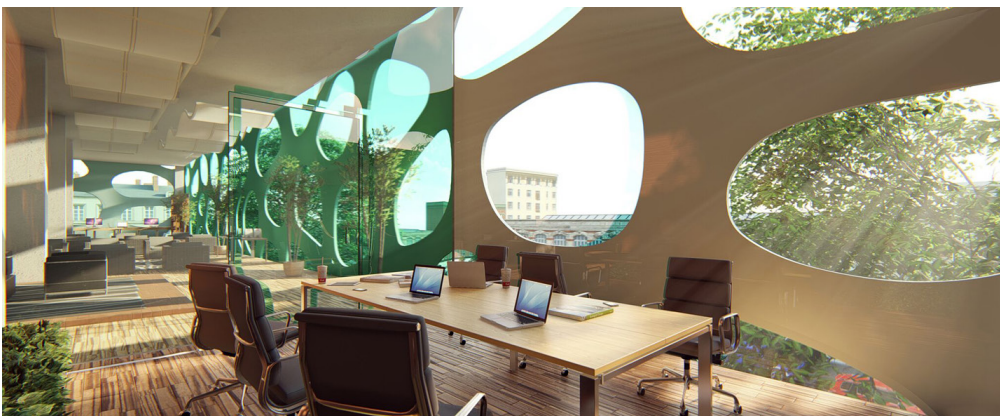
Freshman Year - Marker and Ink Presentation



Sophomore Year - Studio Residential Design



Junior Year - Studio Office Design and Space Planning



Senior Year - Studio Adaptive Reuse Design

THE PROGRAM

- Accredited by the Council for Interior Design Accreditation (CIDA) and National Association of Schools of Art and Design (NASAD) as a testimonial to the quality of the program.
- Outstanding profession-oriented curriculum and required internship.
- Courses are taught by expert faculty and professionals with degrees in both interior design and architecture.
- Small studio class size with typically 18 students per class and lecture classes of 25-30 students.
- Computer facilities meet and exceed the needs of the profession.
- All students pay in-state tuition.
- Students are winning state and national competitions.

MISSION

The mission of the Interior Design Programs at Eastern Michigan University is academic preparation of students to enable them to solve problems related to the function, health/safety/wellbeing, and quality of interior environments.

APPLICATION

www.emich.edu/cot/vbe/programs/ide/



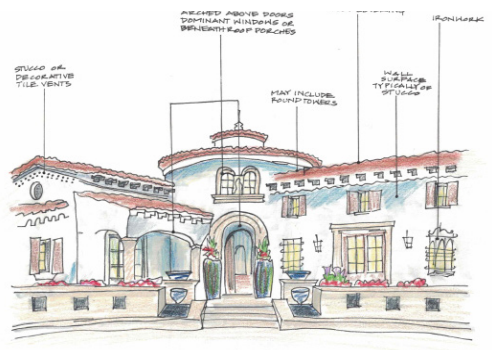
Environmental Psychology
and Behavior



Materials section



Digital presentation



Analysis of Interior design history

Freshman Year - Fall I

- IDES 110 Interior Design Studio I
- IDE 111 Environmental Psychology and Behavior for Interior Design
- IDE 131 Interior Design Theory I
- ARTH 100 Art Appreciation

General Ed Courses, such as:

- CTAC 124 Foundations of Speech or
- KIRTG121 Composition II

Freshman Year - Winter I

- IDES 120 Interior Design Studio II
- IDE 121 Interior Design Materials and Components
- IDE 122 Interior Design Theory II
- IDE 123 Computer for Interior Design I

General Ed Courses, such as:

- GEQR Quantitative Reasoning or
- GEUS US Diversity

Sophomore Year- Fall II

- IDES 210 Interior Design Studio III
- IDE 219 Computer for Interior Design II
- IDE 225 History of Interiors from Antiquity to 1800
- CNST 201 Construction Systems

General Ed Courses, such as:

- GEKA Arts 1 or
- GEKA Arts 2

Sophomore Year - Winter II

- IDES 220 Interior Design Studio IV
- IDE 221 Environmental Systems for Interior Designers
- IDE 226 History of Interiors from 1800 to Present
- IDES 229 Building Information Modeling
- CNST 201 Construction Systems- if not completed fall



Interior Design Studio

Junior Year - Fall III

- IDES 310 Interior Design Studio V
- IDE 317 Lighting Systems for Interior Designers
- IDE 318 Interior Building Codes and ADA
- IDE Elective I

General Ed Courses, such as:

- GEKN Natural Sciences 1
- GEKN Natural Sciences 2



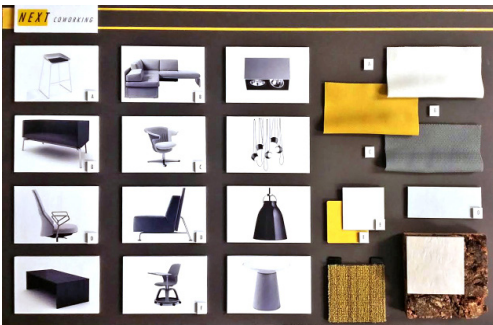
Fieldtrip for internship practice

Junior Year - Winter IV

- IDES 320 Interior Design Studio VI
- IDE 325 Professional Practice in Interior Design
- IDE 326 Portfolio Development
- IDE 390L4 Internship in Interior Design

General Ed Courses, such as:

- GEKS Social Sciences 1
- GEKS Social Sciences 2



Material board presentation

Senior Year - Fall V

- IDES 410 Interior Design Studio VII
- IDE 425 Mill Work Design and Detailing
- IDE Elective II

General Ed Courses, such as:

- GEGA Global Awareness
- GEKH Humanities 1 or
- GEKH Humanities 2



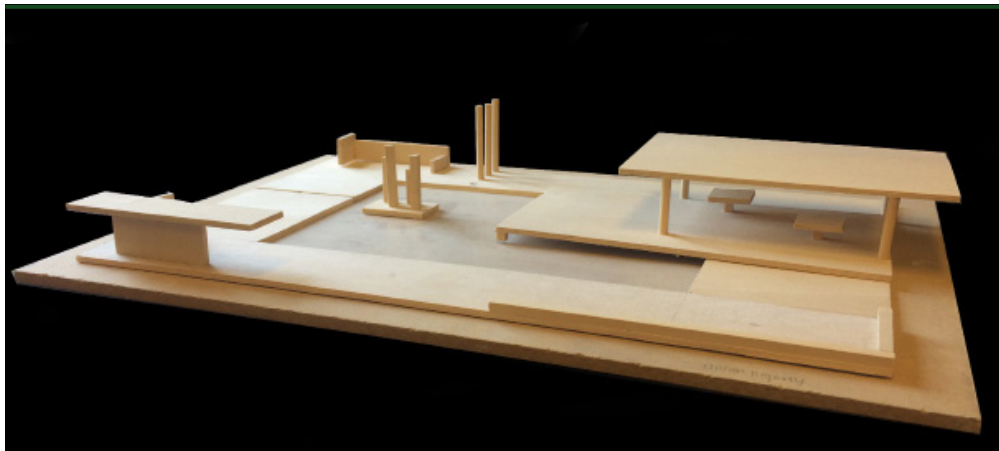
Digital Divas, recruiting event for middle and high schoolers

Senior Year - Winter VI

- IDES 420 Interior Design Studio VIII
- IDE 430W Writing for Interior Design
- IDE 407 Sustainable Design/LEED

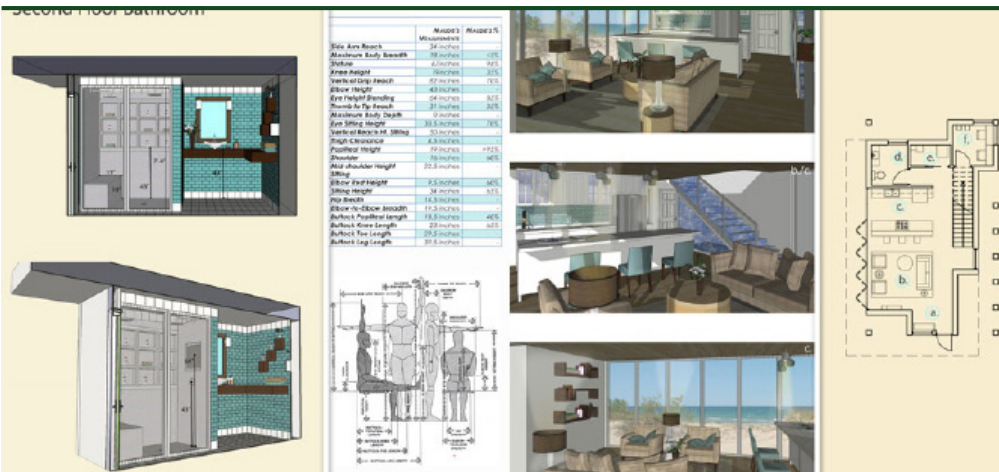
Note: Fall IDE/IDES courses listed are ONLY offered Fall and those listed for Winter are ONLY offered Winter!

STUDENT WORK



Freshman Year

Interior Design Theory I
The project was created based on the greek golden mean and Kevin Lynch theory of design.



Sophomore Year

Studio III
A residential design solution was proposed by each student for a client.



Junior Year

Studio VI
A hospitality design was proposed by each student. It was a renovation project of River Place of Detroit.



Senior Year

Studio VIII
University of Michigan Hospital, Brighton Center for Speciality care.

Junior Year



"I decided to come to EMU after learning about the interior design program here. The straight forward curriculum, two day a week schedule, and CIDA accreditation really made it an easy choice. Through my first semester in this program, I have already learned so much and discovered how many details are really involved in the design world. The professors here are very good at making the classes interesting and enjoyable, making it easy to want to be there. As I move forward in the program, my interest has only grown for the design field and I am excited for what is to come."

Brett Berry
Class of 2023

Senior Year



"I chose EMU because it effectively combines the technological side of interior design with the analytical. What I adore about designing is the ability that you have to create an experience through your creativity and wit. Having professors that are just as passionate as I am about design, motivates me to do my best every semester."

Kyla Jones
Class of 2022

Interior Design Student Organization

It was created a few years ago to generally cover all professional organization options. Students are also welcome to become a student member of ASID, IIDA, NKBA, USGBC, etc. There was a time when EMU had multiple student orgs through these groups and folks couldn't decide what meetings to attend.



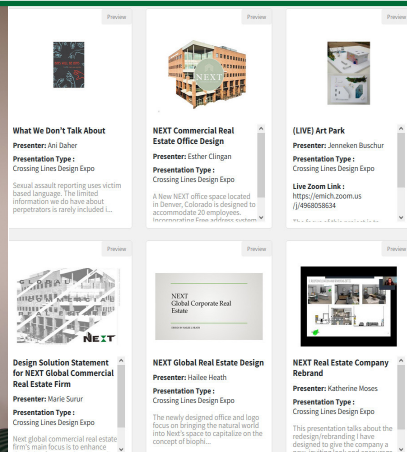
Now they attend one meeting once a month with professional speakers or field trips. Some meetings involve juniors or seniors offering tips for studio projects. Meetings satisfy the Learning Beyond the Classroom, General Education requirement to attend events beyond coursework. If they independently join the other professional organizations, they may participate in those events

STUDENT ACTIVITIES AND HONORS



First Place : Karley Hass

The Ghiordes Knot 27th
Student Creative Space
Competition CET Awards
Dr. Diane



UG Symposium

Students participate in
Eastern Michigan University
2020 & 2021 Undergradu-
ate Symposium

STUDENT RENDERING

1ST: JILLIAN SITKIEWICZ, EASTERN MICHIGAN UNIVERSITY
2ND: KELSEY SHIELDS, EASTERN MICHIGAN UNIVERSITY
3RD: OLIVIA GRANT, EASTERN MICHIGAN UNIVERSITY



CET AWARDS

CET Student Rendering Awards

Students win top three
spots in the national CET
Student Rendering Awards
for three consecutive years



Field Work

Students visited the VA
Hospital in Ann Arbor.

GRADUATE PROGRAM -CURRICULUM

The Master program in Interior Design encourages students to choose a content domain for their program of study. Students are to consult with the graduate program coordinator to formulate a study plan that integrates required IDE courses with other areas such as Sustainable Design, Hospitality Design, Design History & Theory, Gerontology & Healthcare, Advanced CAD, etc. to develop design expertise. See course sequence example below.

Master of Science in Interior Design (IDE)

Degree Requirements: 36 hrs

Doctor of Philosophy in Technology (PHD - TC)

Degree Requirements: 60 hrs

First Year Fall

IDE 508 Graduate Design Studio I
IDE 610 Research Design & Methods
IDE 525 Detailing Design

First Year Winter

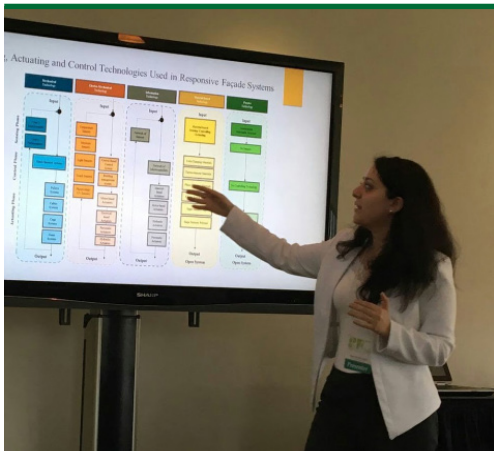
IDE 508 Graduate Design Studio II
IDE 507 Sustainable Design & LEED
IDE 691 Thesis/Project I

Second Year Fall

IIDE 509 Evidence-Based Design/ WELL
IDE 516 Advanced CAD- 02523
CNST 505 Project and Program Mgmt

Second Year Winter

IDE 690 Thesis/Project III
IDE 692 Thesis/Project II
Cognate Outside Program 3 cr.
Cognate 3 cr.



One of our students, Negar H. Matin (Ph.D. Candidate) has been working on responsive facade systems. Her research interests are in interdisciplinary areas of cultural identities, architectural technology, building envelopes, responsive autonomous intelligent facade systems and smart materials. She has published six journal and conference papers in high-ranking architectural research journal and conference proceedings.

STUDENT PROJECTS AND TESTIMONIALS



Graduate project inspired by nature. For sustainability, there are solar panels, water collecting and wide cooling.

Project by Chuan Gao



Graduate project created based on the natural juxtapositions often found in nature. It is an Environmental Education Center.

Project by Linda Montgomery

Master's student



“After getting my undergraduate degree in Architecture in Ethiopia, I wanted to explore more and expand my knowledge about Design. I chose EMU because I wanted to specialize in Healthcare design and the Interior Design program focuses on function, safety/health, and it is also CIDA accredited. I have seen great qualities from the professors who go beyond to help students achieve their goals.”

Tehetna Hailu

Graduates are able to gain hands-on experience in both residential and commercial settings.

Graduates get jobs in a variety of fields including commercial design, residential design, design sales and green (LEED) design firms.

The Interior Designer can work in different positions, according to Indeed Website, such as:

Interior Designer
Design Project Manager
Design Consultant
Design Sales Consultant
Interior Design Specialist
Showroom Consultant
Teaching Faculty

The most updated information provided by the Bureau of Labor Statistics (BLS) in 2021, states that Interior Designers across the United States receive a median pay of \$56,040 per year or \$ 26.94 per hour.

Also, the Interior Designer can work in different environments, according to United States Department of Labor, such as:

Specialized design services
Self-employed designers
Wholesale trade
Architectural, engineering, and related services

Job Placement

For undergraduate graduates from last year in Interior Design at Eastern Michigan University (2021), 30% were employed in commercial design, 40% in residential design, and 10% in graduate school.

Companies/ Universities and Colleges where students are employed: Ghafari Associates, RTKL Associates, Gensler, dPOP, UM - AEC, UM - Housing, KSI Kitchen & Bath, Independent practice, Henry Ford Community College, Bowling Green State University, Jeddah International College (Saudi Arabia), King Abdulaziz University (Saudi Arabia).

GHAFARI

CALLISON RTKL

Gensler



SHERWIN-WILLIAMS.

L A Z B O Y®

RESTORATION
HARDWARE

ILLUMINART
A Division of Peter Basso Associates, Inc.

Steelcase

ALUMNUS TESTIMONIALS & FACILITIES



“EMU provides a personalized learning environment where you can work closely with the professors to gain architecture and interior design knowledge that enables the student to develop real life solutions to client needs. Space affects people’s behavior. Being a designer provides me with the ability to assist businesses with attracting talent, engaging their workforce, and improving collaboration.”

Lisa Moore- DPOP



“Eastern Michigan University provides a diverse environment for learning. The interior design program is a comprehensive representation of the real world design experience and prepared me for the success I have today.”

Meaghan Short- VA Ann Arbor Healthcare System

Facilities

There are different types of classrooms to address the students needs. The computer labs are equipped with pc computers, ploters and printers. The students have access to different software such as Autocad, Revit, SketchUp, CET Design, Rhinoceros, Photoshop, InDesign, Illustrator, 3Ds Max and others. There are three studio rooms where the students take IDE courses and develop their own projects. The Material Lab is inside two studio rooms. Students can find both residential and commercial materials for projects.



**Computer Lab-
Roosevelt 213**



**Studio and Material Lab-
Roosevelt 201**



**Studio-
Roosevelt 211**



Dr. Deb de Laski-Smith ddelaski@emich.edu

Ph.D., Michigan State University

M.S, Michigan State University

Graduate Certificate in Gerontology from Michigan State University

Bachelor degree Adrian College in Interior Design

Interests and Expertise: Design experience and consulting work focused on residential design, geriatric spaces and special need environments.



Dr. Diane Guevara dguevara@emich.edu

Ph.D., Eastern Michigan University

M.S, Eastern Michigan University

BS, West Virginia University

Interests and Expertise: Analyzing work modes and workplace factors, planning, and designing corporate environment, Specialty in fit planning, Virtual reality display analysis based on the theoretical framework of the Model of Spatial Presence (MSP), Virtual Reality Spatial Presence Index (VRSPI), Evidence-based design in healthcare interiors

Instructors:

Christine Kennedy	-	Architect/ Interior Designer
Stephanie Legg	-	Lecturer - Eastern Michigan University
Linda Mason	-	Interior Designer - University of Michigan
Michelle belt	-	Interior Designer - Lawrence Technology University
Robert White	-	Principal Lighting Designer - Illuminart
Susan Haifleigh	-	Principal/Founder - DiaMonte Design LLC
Teresa Penix	-	Senior Interior Designer - University of Michigan Health System

CONTACTS

Interior Design Program
School of Visual and Built Environments
206 Roosevelt Hall
734.487.2490
interior-design@emich.edu

College Advising Office/ Student Service
734.487.8659

University Advising and Career Development Center
734.487.0400

