

United Way of Washtenaw County Grant Investments Overview 2021-22

For over 100 years your local United Way has been improving lives in Washtenaw County. We're building on that legacy, supporting innovative and lasting solutions—ones that get to the root of collective problems and foster a community where your zip code no longer predicts your opportunity in life.

Grants to organizations that support solutions which mitigate and disrupt the intersectional impacts of poverty, racism and trauma are a key strategy in our work. Why? Because these are root causes of systemic oppression and three forces which hold opportunity at bay for all people in Washtenaw County. During our last fiscal, community volunteers invested over \$2.2 million dollars into 70 local organizations and groups to foster a more equitable Washtenaw County.

United Way of Washtenaw County Grant Programs		
FUND	21-22 FUND TOTAL	# OF GRANTS AWARDED
Opportunity Fund Supports programs, projects or initiatives benefiting priority populations in Washtenaw County-- people with low incomes, communities of color and historically excluded people and communities.	\$ 200,000	16
Basic Needs Fund Supports the immediate, most basic needs of individuals, children and families in need (e.g. food, shelter and clothing).	\$14,114	2
Power of the Purse Fund Supports existing and emerging agency programs and initiatives that increase the financial capability of people who identify as women.	\$ 50,500	8
Justice Fund Addresses systemic issues within the UWWC give, advocate and volunteer framework. Comes alongside marginalized communities in Washtenaw County as they build power, agency and resilience.	\$380,000	10
Community Impact Fund Multi-year funding to organizations that are actively mitigating and disrupting the Impacts of Racism, Poverty and Trauma among UW priority populations and communities (3 year grants)	\$1,000,000*	41
*Represents annual UWWC investment in FY23, 24, and 25		
Community and Nonprofit Capacity Building	\$320,000	6

COVID Recovery Fund One-time support to meet pandemic-related needs of ALICE Asset-Limited, Income-Constrained and Employed) households -- those that earn more than the Federal Poverty Level, but less than the basic cost of living-- and those experiencing poverty in Washtenaw County	\$240,000	16
Total UWWC 2021-22 Grant Investments	\$ 2,204,614	99

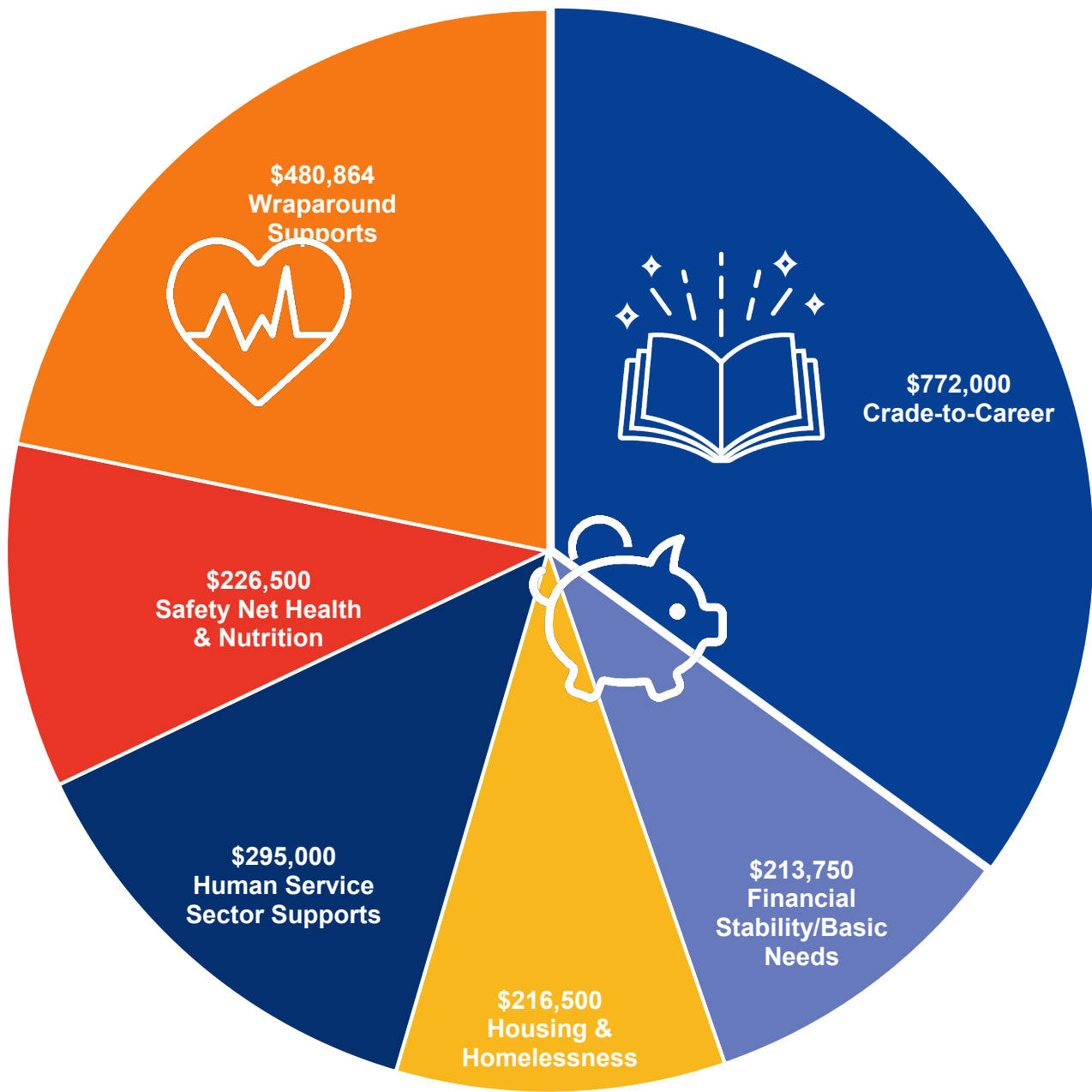
Our Community Investments by Priority Area

As illustrated below, the majority of UWWC's grant investments in 2021-22 supported programs and initiatives within the following priority areas: Cradle to Career, Safety Net Health & Nutrition Housing & Homelessness, Older Adult Supports, Financial Stability, Wraparound Supports, and Human Service Sector Supports.

All investments in 21-22 help advance our vision that by 2030, your zip code will no longer predict your opportunity in Washtenaw County.

PRIORITY AREA	DESCRIPTION
Cradle to Career	Supports for children and school aged youth (ages 0-18) and their families through strategies such as building parenting skills, providing high quality childcare, strengthening social emotional health, academic success, school engagement, out of school programming, youth-adult relationship building, and on-site school programming.
Financial Stability	Services and supports that increase the economic wellbeing of Washtenaw County people.
Housing & Homelessness	Efforts that reduce the number of individuals and families that experience homelessness through prevention, emergency shelter, transitional housing, outreach, rapid rehousing, and permanent supportive housing.
Human Service Sector Supports	Strengthening local human service organizations and the networks which support them throughout Washtenaw County through capacity building and technical assistance.
Older Adults Supports	Increase or maintain independent living factors for older adults with low incomes.
Safety Net Health & Nutrition	Increase access to health services through benefits advocacy and referral coordination, and accessing care services; decrease food insecurity through hunger relief, nutrition education enhanced produce distribution, and home-bound food distribution.
Wraparound Services	Delivering comprehensive supports that meet the basic needs of individuals and families.

In FY22, **\$772,200** of UWWC grant investments supported the priority area of **Cradle-to-Career**.



Note about the Data: Early Childhood, School-Age Youth, and COVID outreach assistance are included in Cradle to Career; Wraparound Supports and Basic Needs are included in Financial Stability.

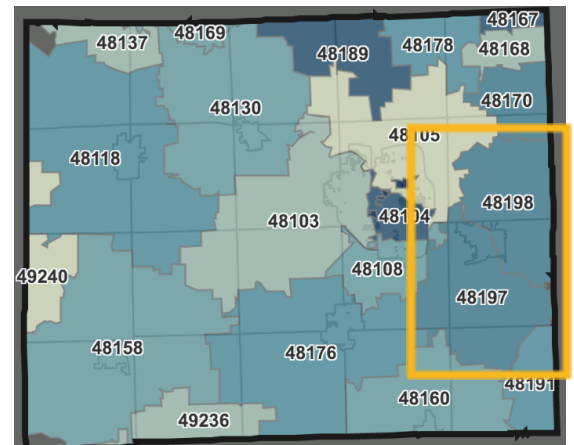
Building Equity and Opportunity

Inequities hurt everyone. In 2016, UWWC made the decision to center racial equity as a core value and practice to advance our mission. Part of our journey has included realizing our role in achieving our vision of a just, connected, and inclusive Washtenaw County in which systemic racism and its consequences no longer exist. UWWC is focusing on removing barriers and increasing access so all people have the opportunity to thrive.

We define equity as the presence of justice and fairness within our procedures, processes and distribution of resources..

Below are data points that illustrate what our recent community investments look like when viewed through an equity lens:

- **53%:** Funding to Ypsilanti/Eastern Washtenaw County, zip codes 48197/98
- **56:** # of grants made to Ypsilanti/Eastern Washtenaw County, zip codes 48197/98
- **36:** # of grantees organizations led by individuals who are Black, Indigenous, or people of color



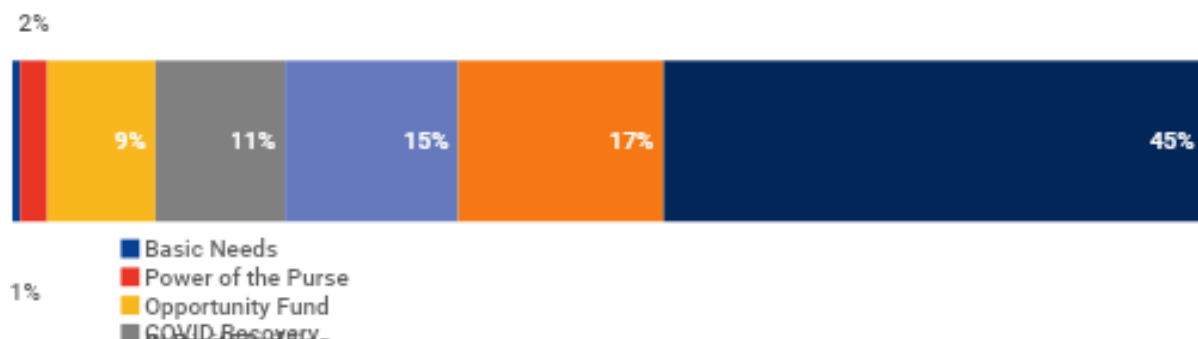
Note about the Data: The populations listed below are not mutually exclusive. People may be represented in more than one category.

*People with low incomes are those living at or below the federal poverty level: \$12,760 for an individual, \$26,200 for a family of four. [USCCHS](https://www.uscshhs.org/)

27,811 Confirmed and Probable COVID-19 Cases in Washtenaw County as of 08/19/2021. [Source: Washtenaw County Health Department](https://www.washtenawcountyhealth.org/)

Our Community Investments by Fund

In 2021-22, **45%** of UWWC funding was invested into the community through our **Community Impact Fund**.



Our Community Impact Partners

In 2021-22, UWWC made 99 grants to 70 local organizations through 7 different grant funds. Below is a list of our current Community Impact Partners, including 18 new Community Impact partners.

**We are proud to welcome these agencies as new Community Impact Partners in FY22.*

+Denotes the 36 agencies whose staff and volunteer leadership self-identify as Black, indigenous, or people of color.

A Brighter Way	Jewish Family Services of Washtenaw County
Aid In Milan	Journey of Faith Christian Church+
Ann Arbor YMCA+	Kekere Freedom School*+
Bad Credit Is Childish*+	Mentor2Youth+
Bethany Christian Services of Michigan*	Michigan Ability Partners
Big Brothers Big Sisters of Washtenaw County	Michigan Advocacy Program+
Buenos Vecinos*+	Mighty Oak Project+
Care Seats of Michigan*+	NEW: Solutions for Nonprofits+
Catchafire	Our Community Reads*+
Child Care Network+	Our House+
Coalition to Re-envision Our Safety*+	Ozone House+
Come Unity Move, Inc.*+	Peace Neighborhood Center+
Community Action Network+	SafeHouse
Community Family Life Centers+	Samaritas*
Community Resource Center, Inc.	SOS Community Services+
Dawn Farm	Stand with Trans
Destiny and Purpose Community Outreach*+	Student Advocacy Center of Michigan+
Dress for Success+	Survivors Speak+
Educate Youth	Telling It
Elevation Youth Corp+	The Dispute Resolution Center+
EMU Foundation-Family Empowerment Program	The Family Learning Institute+
Fair Housing Center of Southeast & Mid Michigan	The Mutual Aid Network of Ypsilanti+
Faith in Action	The Women's Center of Southeastern Michigan
Feonix - Mobility Rising*	UpTogether
Food Gatherers+	Washtenaw Alliance for Children and Youth
Foundations Preschool of Washtenaw County	Washtenaw Area Council For Children
Friends In Deed	Washtenaw County Black Farmers Fund+
Girls Group	Washtenaw Housing Alliance
Girls on the Run of Southeastern Michigan+	Washtenaw Intermediate School District
Growing Hope+	Washtenaw Literacy
Habitat for Humanity Huron Valley	Washtenaw Community College
Hands Across The Water, Inc.*	WCC Entrepreneurship Center
Interfaith Council for Peace and Justice+	We the People Opportunity Farm+
Interfaith Hospitality Network of Washtenaw County+	Women's Center for Southeast Michigan
	Youth Arts Alliance
	Ypsilanti Meals on Wheels+

To read more about our work, please read our [FY22 Grant Investments Report](#).

For more information about UWWC grant investments, visit uwgive.org or contact Bridget Herrmann, Vice President of Impact & Advocacy, bherrmann@uwwashtenaw.org