

Eastern Michigan University
School of Music & Dance

MUSIC LITERACY ASSESSMENT

Example

Name: _____ Date: _____
(Last) (First)

Please do not write in this box.

Proctored by: _____

Points: _____ of 43

Percentage: _____%

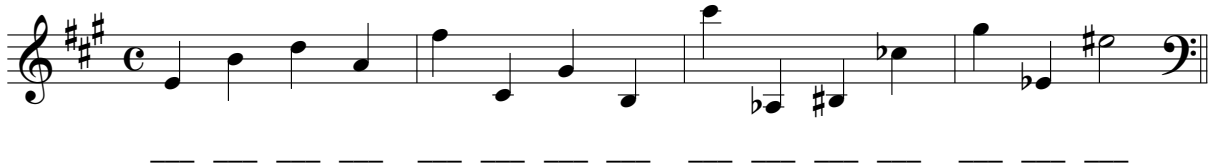
Pass or Fail: _____

PART ONE

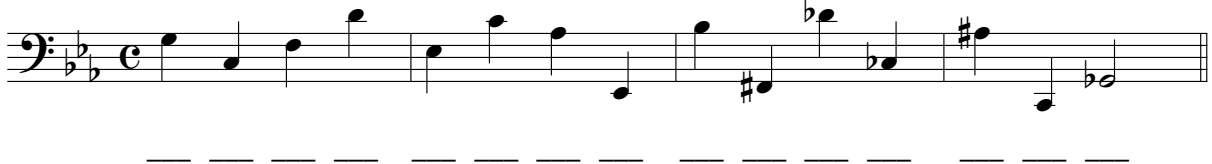
Complete sections A and B below. You will have five minutes to complete both of these sections.

- A. Write the note name under each pitch in the following examples (for instance, C, D#, E \flat).
Do not give enharmonic equivalencies.

1. Treble clef



2. Bass clef



30 points

- B. Except for four wrong notes, the following melody is a song that you know very well.

1. Circle the four notes that are incorrect.

2. The name of the song is: _____

2 points



8 points

C. One of the following melodies will be played three times. Circle the number representing the example in which the pitches are exactly like that of the melody played.



D. One of the following melodies will be played three times. Circle the number representing the example in which the rhythm is exactly like that of the melody played.



E. One of the following melodies will be played three times. Circle the number representing the example in which the pitches and the rhythm are exactly like that of the melody played.



1 point

Eastern Michigan University
School of Music & Dance

MUSIC LITERACY ASSESSMENT

Answers for the Example

Name: _____ Date: _____
(Last) (First)

Please do not write in this box.

Proctored by: _____

Points: _____ of 43

Percentage: _____%

Pass or Fail: _____

PART ONE

Complete sections A and B below. You will have five minutes to complete both of these sections.

- A. Write the note name under each pitch in the following examples (for instance, C, D \sharp , E \flat).
Do not give enharmonic equivalencies.

1. Treble clef

E B D A F \sharp C \sharp G \sharp B D A \sharp B \sharp C \flat G \sharp E \flat D \sharp

2. Bass clef

G C F D E \flat C A \flat D B \flat F \sharp D \flat C \flat A \sharp C G \flat

30 points

- B. Except for four wrong notes, the following melody is a song that you know very well.

1. Circle the four notes that are incorrect.

2. The name of the song is: "Row, Row, Row Your Boat"

2 points

8 points

C. One of the following melodies will be played three times. Circle the number representing the example in which the pitches are exactly like that of the melody played.



D. One of the following melodies will be played three times. Circle the number representing the example in which the rhythm is exactly like that of the melody played.



E. One of the following melodies will be played three times. Circle the number representing the example in which the pitches and the rhythm are exactly like that of the melody played.



1 point