

# Student Engagement and Success

*SOAR 2023 – Family and Guest Programs*





# Housing & Residence Life: SOAR 2023

#Live**EMU**



# Benefits of Living on Campus

- Residents have...
  - Higher GPAs on average
  - More involvement on campus
  - Higher enrollment rate on average
  - More satisfaction with college experience
  - No additional utility costs
  - Exclusive programs
  - Leadership opportunities
  - Campus safety and security
  - Multiple meal plan options



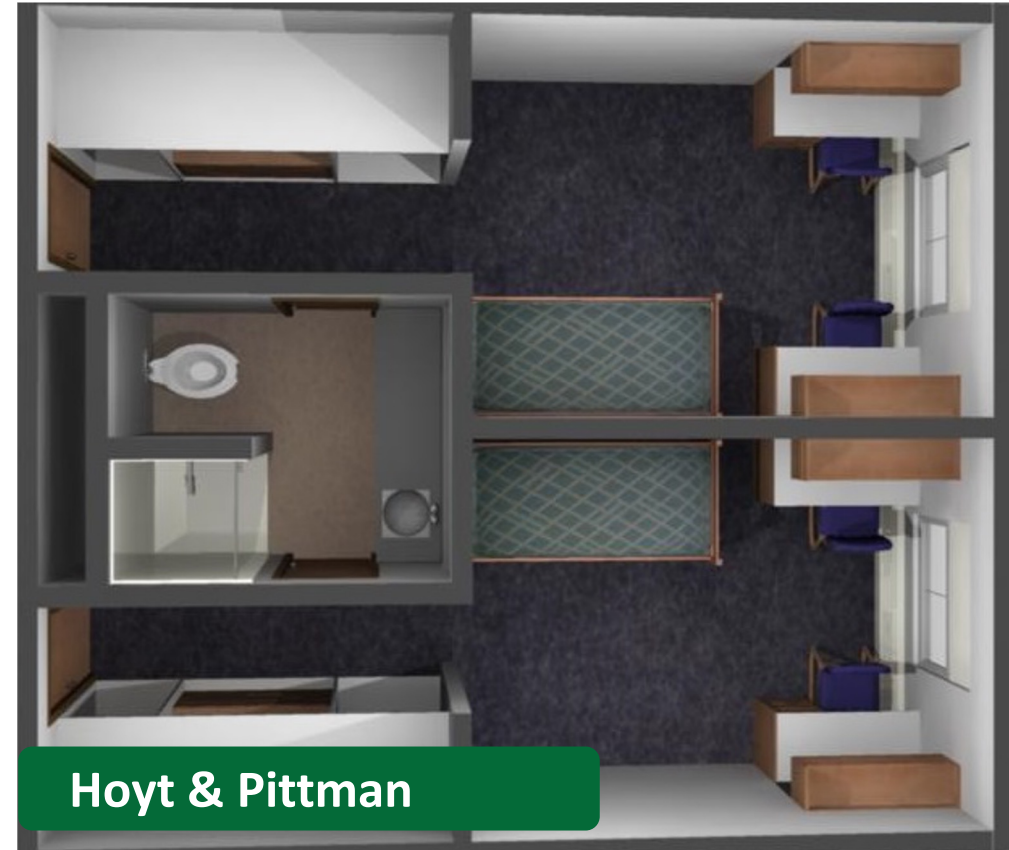
# Welcome Home 2025



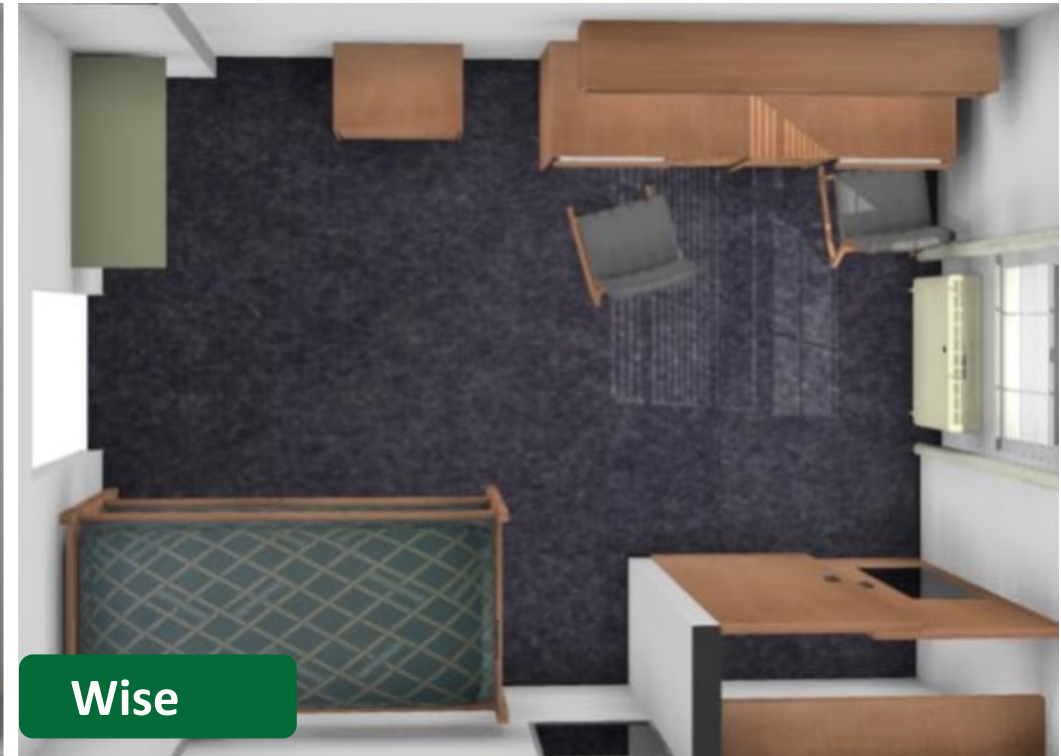
- Two new apartment-style buildings
- Major renovations of Phelps, Sellers, Walton, Putnam, and Downing
- Minor renovations at the Village and Cornell Courts
- New property management team
  - Gilbane Development Company invested \$200M+ to construction and renovation



# Housing Options



# Housing Options





# Living-Learning & Theme Communities

- Aviation
- Arts Appreciation
- SPECTRUM (LGBTQ+)
- TRIO/Student Support Services\*
- Brotherhood Scholars\*
- Sisterhood Scholars\*
- Honors\*

\*Requires separate application and approval to program in order to live in housing community



# Overview of the Application Process

## Step 1

- Make \$150 pre-payment, application opens May 1, 2023
- Sign contract
- Create personal profile & answer roommate-matching questions

## Step 1.5

- Use search features to find a roommate!
- Follow directions online to create a group of two
- Only groups of two will move forward

## Step 2

- Pick where your group wants to live
- Pick your meal plan
- Finalize and complete application



# Follow Us On Social Media For Up-To-Date Info



[EMU Housing & Residence Life](#)



[@emuhousing](#)

Check Out Our Website [emich.edu/residencelife](https://emich.edu/residencelife)

Have Questions? Email Us At [housing@emich.edu](mailto:housing@emich.edu)



# EMU DINING

MORE THAN FOOD



## MARK JEFFERSON



## THE STUDENT CENTER

**BUILD**  
pizzed by design

**MENDO**

**SONO**  
CELEBRATE LATIN

**STARBUCKS**  
true burger.



## CROSSROADS



## THE ROOST

## THE EASTERN EATERIES



Ciao Bella

## REC/IM

shake  
smart



## MCKENNY HALL



## PRAY-HARROLD



## THE COMMONS

**The Commons**  
all-you-care-to-eat dining

# WHERE TO EAT ON CAMPUS

# OUR STUDENTS SHOWING THEIR APPRECIATION

idk who made my sandwich at the melt lab today  
BUT GOOD LORD 🙏🙏🙏🙏 THANK YOU

Whoever made the chocolate chip cookies in the  
commons today did a wonderful job 100

I ain't gone hold you but man THIS BROCCOLI IN  
THE COMMONS SLAPPING ALHARD ASF THE  
WAYS IS COOKED AND SEASONED  
MMMMMMMMM SHMACK BROCCOLINI FOR DA  
WIN

Whoever's making the enchiladas in the  
commons imma need your name, number,  
and ring size

Daaaaang, commons. That chicken is so delicious

Whoever made my pasta at Ciao Bella just now, I  
hope both sides of your pillows are so cold tonight





# DINING EVENTS



## RESIDENTIAL

- PANCAKES + PAJAMAS
- RETRO REMIX
- I <3 BRUNCH



## LOVE, EDINING

- GOLFCART DONUT DELIVERY
- HOT COCOA FOR CLASS
- PUMPKIN SCAVENGER HUNT



## DO IT YOURSELF

- CHOCOLATE FOUNTAIN
- COOKIE DECORATING
- SUSHI BOWLS



# GIVING BACK TO OUR COMMUNITY + PLANET

- 1,000+ THANKSGIVING MEALS DONATED TO LOCAL ORGANIZATIONS
- 985 LBS OF FOOD DONATED TO SWOOPS FOOD PANTRY + FOOD GATHERERS
- 1,021 LBS OF FOOD COMPOSTED FROM NOV 23' - DEC 23'
- 30 TUBS OF PEANUT BUTTER DONATED TO LOCAL HUMANE SOCIETY
- + MORE





# DINING WITH ALLERGIES

## ALLERGEN STATION AT THE COMMONS

- FOR STUDENTS WITH SEVERE ALLERGIES AND INTOLERANCES, THE COMMONS' ALLERGEN STATION IS YOUR SAFEST OPTION. THIS STATION AVOIDS THE TOP 9 ALLERGIES (WHEAT/GLUTEN, DAIRY, EGG, SOY, PEANUTS, TREE NUTS, SHELLFISH, FISH AND SESAME.)

## DON'T BE SHY, SELF IDENTIFY

- CREATE A PROFILE ON OUR DINE ON CAMPUS WEBPAGE OR THROUGH THE DINE ON CAMPUS APP (AVAILABLE ON ANDROID AND IOS) AND IDENTIFY YOUR ALLERGENS ON YOUR PROFILE.

## DINE ON CAMPUS APP

- OPTION IS AVAILABLE AT THE STUDENT CENTER, EASTERN EATERIES, CROSSROADS MARKETPLACE, AND THE COMMONS.







# WE'RE HIRING

**BARISTAS | FOOD SERVICE WORKERS  
CASHIERS | SUPERVISORS | COOKS**

**SCAN TO  
APPLY**



**FREE MEAL  
EVERY 5 HOUR  
SHIFT WORKED**



**SAVE MONEY  
ON GAS - WALK  
TO WORK**



**EARN UP TO  
\$40 IN FLEX  
EVERY MONTH**

**+ FLEXIBLE SHIFTS & GROWTH OPPORTUNITIES**



# CONTACT US

## EMAIL

- [DS\\_MARKETING@EMICH.EDU](mailto:DS_MARKETING@EMICH.EDU)

## OUR WEBSITE

- [DINEONCAMPUS.COM/EMU](http://DINEONCAMPUS.COM/EMU)

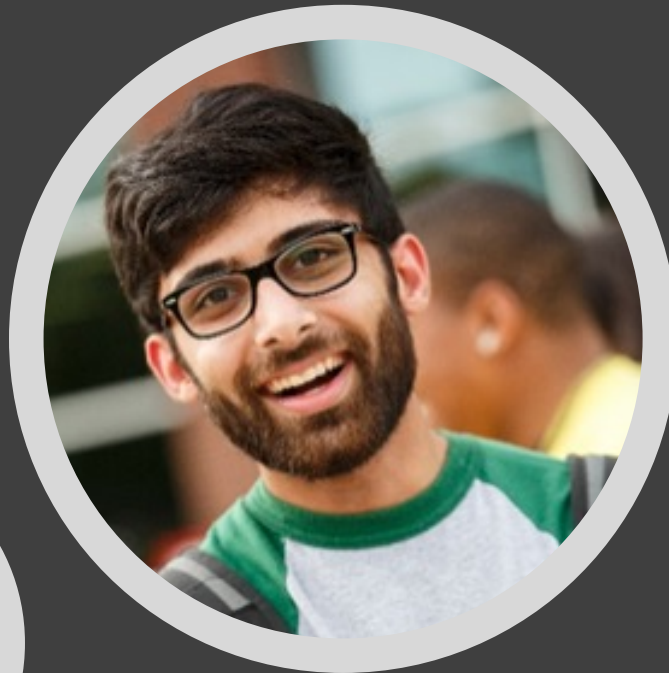
## DINING WITH ALLERGIES?

- [DS\\_NUTRITION@EMICH.EDU](mailto:DS_NUTRITION@EMICH.EDU)

## FOLLOW US ON SOCIAL!

- [@EMICHDINING](#) + [@FOODIE.EMU](#)





**DIVERSITY &  
COMMUNITY  
INVOLVEMENT**





# Director: Diversity, Equity, and Inclusion Programming

- 32 Years of Higher Education Experience
- Detroit Regional Chamber: Detroit Compact
  - Compact Coordinator, Mackenzie High School
- Adrian College: Director of ASPIRES
  - Admissions Representative/International
  - Director of Multicultural Student Services
- Central Michigan University- 23 years of services
  - Director of Undergraduate Recruitment
  - Associate Director Multicultural Recruitment
  - Assistant Director, Minority Student Services
- Email: [kwill302@emich.edu](mailto:kwill302@emich.edu)





## **Mission**

We support and empower minoritized students, provide intentional learning experiences, and challenge systems and structures that perpetuate inequities.

## **Vision**

We envision a campus community where equity and inclusion is woven through all facets of EMU in relationship with the community.

[emich.edu/dci](http://emich.edu/dci)

3<sup>rd</sup> Floor, Student Center





# Who We Are

## DIVERSITY & COMMUNITY INVOLVEMENT (DCI)

DCI supports and empowers minoritized students, provide intentional learning experiences, and challenge systems and structures that perpetuate inequities.

## LESBIAN, GAY, BISEXUAL, AND TRANSGENDER RESOURCE CENTER (LGBT)

The LGBT Resource Center supports the success and development of gender and sexual minoritized students through affirmation, empowerment and advocacy.



## CENTER OF RACE & ETHNICITY (CORE)

CORE cultivates and models a safe, inclusive, socially just environment for all members of the Eastern Michigan community.

## WOMEN'S RESOURCE CENTER (WRC)

The WRC stands for recognizing and celebrating the diverse representations of women on campus. We focus on academic enrichment and professional development for **ALL** women. Our center offers a safe and welcoming space for students.

# Center of Race & Ethnicity (CORE)

- Celebrating historically underrepresented populations;
- Providing opportunities for cultural exploration, dialogue, and personal reflection;
- Collaborating with student organizations to put on cultural events;
- Providing opportunities for leadership development.

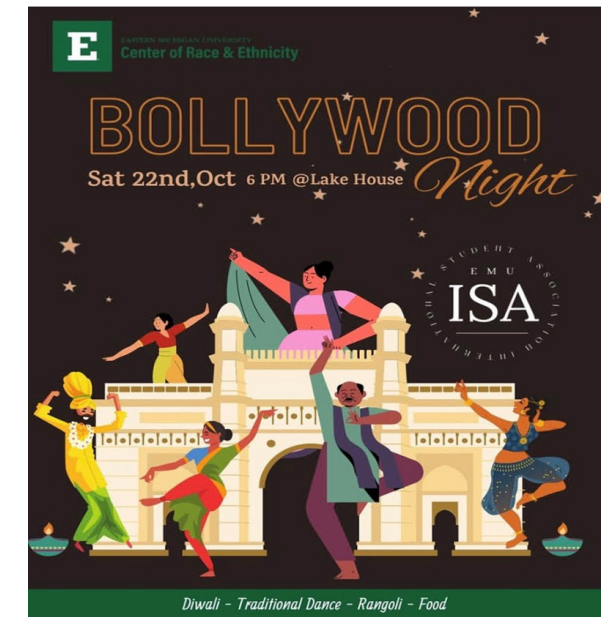


Le'Shay Webb  
Program Coordinator



Melissa Urieta  
Graduate Assistant

# CORE: What We Do





# Lesbian, Gay, Bisexual, and Transgender Resource Center (LGBT)

- Support groups for identities marginalized within the LGBTQ+ community
- Community building and networking with affirming social events
- Community building and networking with affirming social events
- Assisting in navigating campus and community systems, resources, and policies
- Financial assistance through scholarships
- Educating the campus community on issues affecting queer and trans students
- Celebration and recognition of LGBTQ+ student accomplishments and success



Vacant

Program Coordinator



# Women's Resource Center (WRC)

The WRC stands for recognizing & celebrating the diverse representations of women on campus. We focus on academic enrichment and professional development for **ALL** women. Our center offers a safe & welcoming space for students.



Deanna Kowaleski  
Program Coordinator



Yusra Almuktar  
Graduate Assistant



# WRC: What We Do

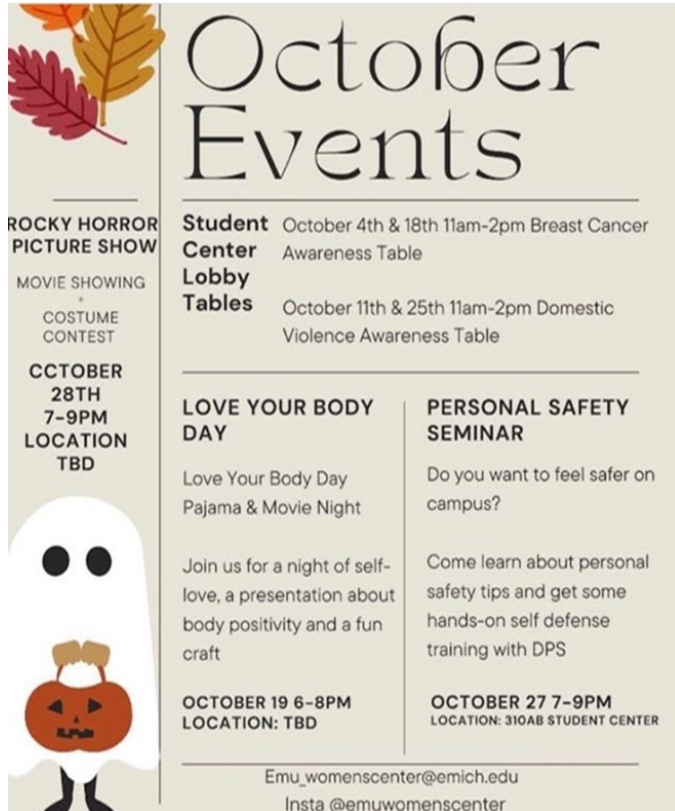
## Resources & Services:

- Sexual assault & domestic violence community partnerships
- Yes Means Yes
- Women of Color Symposium for Leadership and Feminism
- Women of Excellence Scholarship
- Parent-Student Initiative

## Programs & Events:

- Consent workshops
- Changing the Cycle
- Leadership opportunities
- Scholarships
- Personal Safety Seminars
- Awareness month events
- Parent Initiatives
- Social events

# WRC Programming Events



## October Events

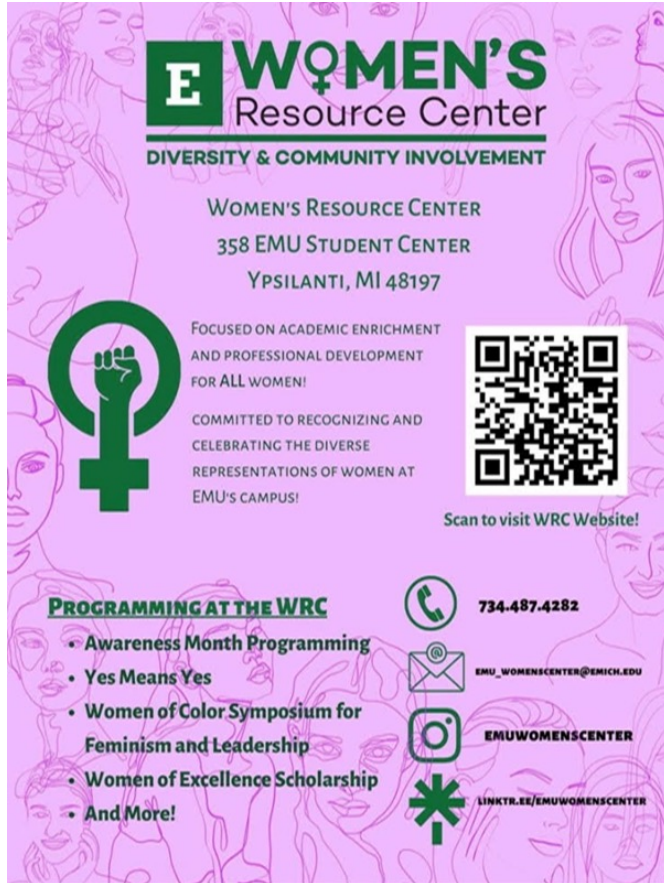
**ROCKY HORROR PICTURE SHOW**  
MOVIE SHOWING + COSTUME CONTEST  
**OCTOBER 28TH 7-9PM**  
LOCATION: TBD

**Student Center Lobby Tables**  
October 4th & 18th 11am-2pm Breast Cancer Awareness Table  
October 11th & 25th 11am-2pm Domestic Violence Awareness Table

**LOVE YOUR BODY DAY**  
Love Your Body Day Pajama & Movie Night  
Join us for a night of self-love, a presentation about body positivity and a fun craft  
**OCTOBER 19 6-8PM**  
LOCATION: TBD

**PERSONAL SAFETY SEMINAR**  
Do you want to feel safer on campus?  
Come learn about personal safety tips and get some hands-on self defense training with DPS  
**OCTOBER 27 7-9PM**  
LOCATION: 310AB STUDENT CENTER

Emu\_womenscenter@emich.edu  
Insta @emuwomenscenter




## WOMEN'S Resource Center

DIVERSITY & COMMUNITY INVOLVEMENT

WOMEN'S RESOURCE CENTER  
358 EMU STUDENT CENTER  
YPSILANTI, MI 48197

FOCUSED ON ACADEMIC ENRICHMENT AND PROFESSIONAL DEVELOPMENT FOR ALL WOMEN!  
COMMITTED TO RECOGNIZING AND CELEBRATING THE DIVERSE REPRESENTATIONS OF WOMEN AT EMU'S CAMPUS!



Scan to visit WRC Website!

**PROGRAMMING AT THE WRC**

- Awareness Month Programming
- Yes Means Yes
- Women of Color Symposium for Feminism and Leadership
- Women of Excellence Scholarship
- And More!

734.487.4282  
EMU\_WOMENSCENTER@EMICH.EDU  
EMUWOMENSCENTER  
LINKTR.EE/EMUWOMENSCENTER



## November Events

### WOMEN'S Resource Center

**Lobby Tables**  
Come to the Student Center Lobby Tables to get to know the WRC! Free giveaways and resources provided  
**11/02 11am-2pm**  
**11/14 11am-2pm**

**Paint Your Flow**  
Join EMU Changing the Cycle to paint what menstruation means to you while learning about about periods and period poverty. Painting supplies are provided for free but space is limited, so be sure to pre-register. LBC Approved!  
**11/03 5-7pm**  
**Student Center Room 270**

**Personal Safety Seminar**  
Learn safety tips and practice hands-on self defense with DPS!  
Get a free pepper spray and personal safety alarm  
**11/16 5:30-7:30pm**  
Location: TBD

**Turning Red Movie Night**  
Come join our Social Work 350 interns at a movie night and learn why it's important to be a part of the fight against the stigma around periods! Snacks will be available to purchase  
**11/10 7-9pm**  
**Student Center Room Auditorium**

**The Janes**  
A documentary about a group of women who built an underground service for women seeking safe, affordable, illegal abortions calling themselves JANE. This event is in collaboration with Planned Parenthood Generation Action & the Women's and Gender Studies department.  
**11/7 6-9pm in the Intersection (270 Student Center)**



# Contact Us

KEVIN WILLIAMS, MA

Director, Diversity & Community Involvement

734.487.3188 | [kwill302@emich.edu](mailto:kwill302@emich.edu)

LE'SHAY WEBB, MA, LPC

Program Coordinator, Center of Race & Ethnicity

734.487.2277 | [lwebb18@emich.edu](mailto:lwebb18@emich.edu)

VACANT

Program Coordinator, Lesbian, Gay, Bisexual, & Transgender  
Resource Center

[lgbtrc@emich.edu](mailto:lgbtrc@emich.edu)

DEANNA KOWALESKI, MA

Program Coordinator, Women's Resource Center

734.487.0364 | [dkowales@emich.edu](mailto:dkowales@emich.edu)

# Welcome to EMU Holman Success Center

[emich.edu/hsc](http://emich.edu/hsc)

[hsc@emich.edu](mailto:hsc@emich.edu)





## Halle Library, G04





**Tracey Sonntag,  
M.A.**  
Associate Director-  
Data



**Holli Black,  
MSA**  
Associate Director-  
Students

# Meet Our Staff!



**Kim Jones, M.A.**  
Success Coach



**Scott Kardel**  
Success Coach



# It is our Mission

- Services to all students—those at risk, on academic probation, and currently well-performing—that support the development of skills they need to achieve and maintain academic success
- We strive for innovation and aim to use technology in unique and effective ways
- We enhance students' academic and personal development and assist them in creating opportunities for growth
- Understanding and use of coordinated referrals to campus offices and resources to ensure that no student ever feels dismissed or abandoned by our staff
- Committed to providing services to support student transitions through graduation and delivering excellence in everything we do.



# Graduate & Undergraduate Student Employees 50 + / Semester



- Drop-In Tutors
- Supplemental Instructors (SILs)
- Peer Academic Coaches (PACs)
- Team Leaders
- Interns
- Receptionists
- Special Projects Assistants
- Success Coaches
- UNIV Instructors

# Academic Support Programs

Drop-In Tutoring

Knack Tutoring

Supplemental Instruction

Success Coaching

Peer Academic Coaching

Mentor Collective

Chromebook and Laptop Loan Program

Eagle Study Tables

Eagle Rewards





# EMU Engage App / Starfish

Student Communication Board

Tools for Academic Success

Updated Schedule of Campus Events

Specific Course Support

Academic Calendar

Scholarship Support

Campus Resources



The Holman Success Center  
is always here for you to help answer questions,  
guide you to the appropriate campus resource, and offer  
ongoing support.

Welcome to EMU!



# Contact Information

[www.emich.edu/hsc](http://www.emich.edu/hsc)

(734) 487 - 2133

[success.center@emich.edu](mailto:success.center@emich.edu)

G04 Halle Library, Ypsilanti, MI 48197







Campus Safety  
with the  
EMU Police  
Department

# The Police Department

- EMU Police Officers (MCOLES certification)
- 24/7 including holidays and weekends
- [emich.edu/police](http://emich.edu/police)
- **734.487.1222**



# EMU Text Alerts

- Members of the EMU community will automatically be entered into the system to receive emergency emails alerts
- Can sign up to receive emergency text message alerts
- Can add additional numbers



**Get Emergency Alert Texts**

Sign up to receive a text message from the EMU Department of Public Safety if a major University emergency occurs.

Register now at  
**[getrave.com/login/EasternMichigan](https://getrave.com/login/EasternMichigan)**  
to receive an EMU Emergency Alert

For more information:  
**[emich.edu/alerts](https://emich.edu/alerts)**

**EMU** *Emergency Alert*





# SEEUS

**734.487.3387**

- Walking escort service
- Designed to enhance safety and peace of mind while walking on campus after dark
- Provides additional eyes and ears
- On-campus service only
- Student employment opportunities

# Crime Prevention Programs

- Bike Registration
- A.L.I.C.E.
- Sexual Assault & Consent
- Dating & Domestic Violence
- Stalking
- Campus & Personal Safety
- Commuter/Travel Safety
- De-escalation tactics
- Property Engraving
- Identity Theft Protection
- Online Safety
- Fraud/Scam Awareness





# RAD Self-Defense

- Women and men classes
  - Free
  - Sign up for emails
    - [cgeyer@emich.edu](mailto:cgeyer@emich.edu)
    - 734.487.0987





# **EASTERN MICHIGAN UNIVERSITY CREDIT UNION**

# Credit Union vs. Banks

Managed by Volunteer Board of Directors

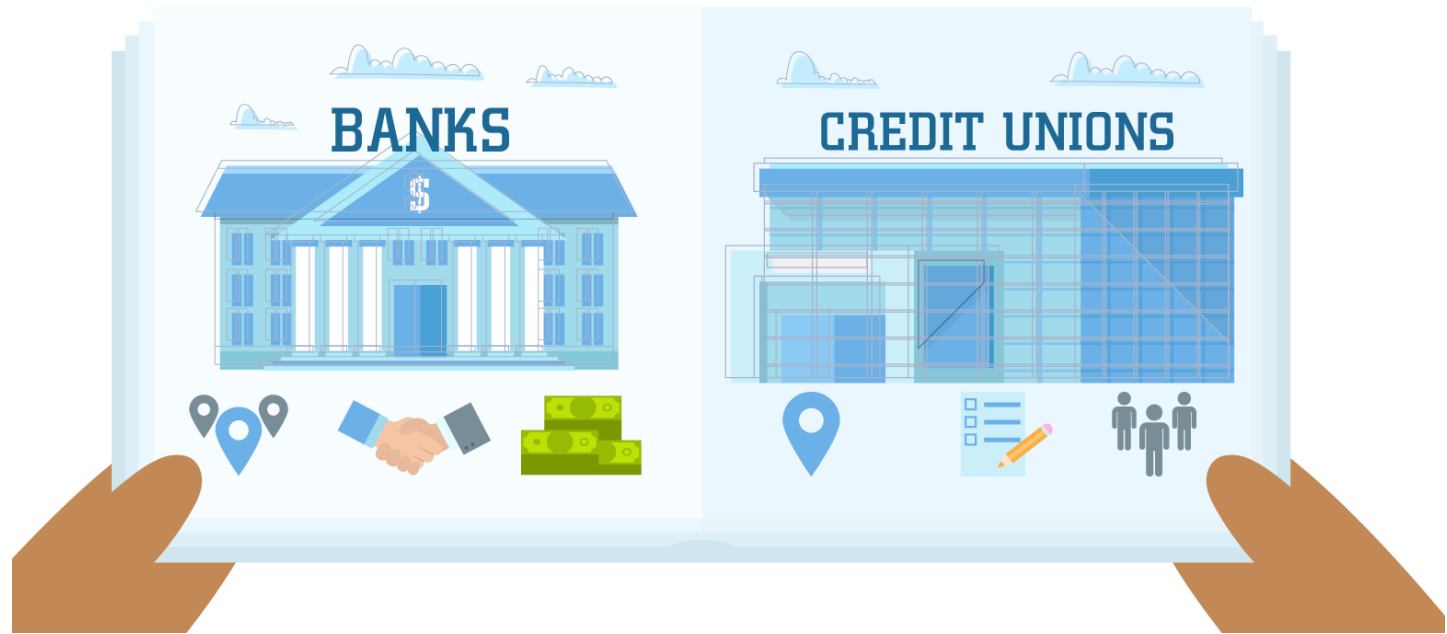
**Not** for Profit

Owned by Members

Community Focused

Access to over 30k+ ATMs

Insured through NCUA \$250K





# Your Financial Education Stop

We teach students how to be financially healthy!

- Create smart money habits
- Build credit safely
- Plan for future





# Student Accounts

- ★ Checking account
- ★ Savings account
- ★ Mobile banking
- ★ Financially Savvy Credit Cards



We are at many campus events!





# Community Impact

- ★ Free Financial Workshops
- ★ Free Budget Counseling
- ★ Free Credit Education

## ★ Partner with local charities:



- United Way
- Ele's Place
- Michigan Foster Closet
- Huron Valley Humane Society
- American Heart Association
- Motts Children's Hospital
- Detroit Dog Rescue
- American Suicide Prevention
- High School Scholarships
- Shop Local Give Local Initiatives
- Many MORE!!!!



The entire workshop was very helpful and informative – it's great to have steps that are clear and actually manageable to fit into daily life."

– Meg B.  
UM Faculty



The support from UMCU is leading to a happier and healthier Washtenaw County!"

– Sarah S.  
American Heart Association's  
Heart Challenge Director

# Your *Students* Success Is Our Purpose



- ★ EMUCU is a division of UMCU
- ★ We hire students to work *with* us
- ★ *Parents* can have accounts too
- ★ Convenient and custom service
- ★ We put you and your students **first**



# Contact us

★ [www.EMUCU.org](http://www.EMUCU.org)



Facebook: Eastern Michigan University Credit Union

Twitter: @EMUCreditUnion

Instagram: @EMUCreditUnion

Phone: 734-662-8200 \*We are a division of UMCU





# LIFE ON CAMPUS





# Why get engaged with Life on Campus?

Studies suggest that students who are engaged outside of the classroom are more likely to:

- Have higher GPAs
- Be retained and graduate on time
- Land a job soon after graduation (build employable skills)
- Enjoy their college experience





# Top 10 Skills Of 2025

Source: Future of Jobs Report, World Economic Forum

## Type of skill

- Problem-solving
- Self-management
- Working with people
- Technology use and development

✓ Skills you can build outside of the classroom

- ✓  Analytical thinking and innovation
- ✓  Active learning and learning strategies
- ✓  Complex problem-solving
- ✓  Critical thinking and analysis
- ✓  Creativity, originality and initiative
- ✓  Leadership and social influence
-  Technology use, monitoring and control
-  Technology design and programming
- ✓  Resilience, stress tolerance and flexibility
- ✓  Reasoning, problem-solving and ideation



## Our Mission

We offer student-centered learning, development and involvement activities that promote and support student engagement and student success.







## Orientation Team

- SOAR
- Online Orientation
- EMU Connect



## Engagement & Activities Team

- Late Night Programs
- Excursions
- Speakers
- Community Building
- Family Weekend
- Homecoming

## Student Organizations Team

- Org Recognition
- Student Organization Fairs
- Help Starting an Org
- Guidance for org officers & advisors (and members)

## Fraternity & Sorority Life

- Advise Councils
- Provide Training & Workshops



# PI DAY

MARCH 14, 2023 (3.14)  
11-2PM  
OUTSIDE OF PRAY HAROLD

Celebrate with free mini pies and Little Caesars pizza!



## ART CART PAINT & PLANT

Come paint a flower pot and we'll give you the free plant to put in it!

August 30, 2022  
2:30-4:30PM  
Student Center Patio  
\*Rain location: Student Center 1st Floor



## MARCUS LAGUERRE & LEMISSE ABDELBAQUI

AUGUST 27, 2022  
STUDENT CENTER BALLROOM  
7-9 PM

SPONSORED BY:



## Top Gun Maverick

November 17, 2022  
7:00-9:00PM  
Student Center Auditorium



## NATIONAL COMING OUT DAY

October 11, 2022  
2:00PM-5:00PM  
Pride Flag Display between Porter and Pray-Harold

Come join us as we celebrate our true authentic selves and connect with one another. Enjoy fair-style festivities, food, and fun!



## Rock the Patio

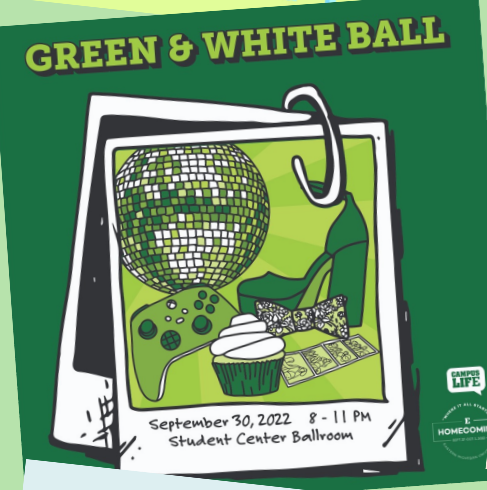
Close the semester out on a high note with a small music festival, food, and lawn games!

April 19th, 2023 5:00 pm - 8:00 pm  
University Park



## GREEN & WHITE BALL

September 30, 2022 8-11 PM  
Student Center Ballroom



## FAMILY WEEKEND

September 22-25, 2022



## DÍA de los MUERTOS

FAMILY • FOOD • MUSIC  
FAMILIA • COMIDA • MÚSICA  
OCTOBER 27, 2022 7:00 PM - 9:00 PM  
CAKEHOUSE



## SWOOPTACULAR SPOOKTACULAR

OCTOBER 13, 2022 ★ 7-9 PM



## Cedar Point HALLOWEENS



## Pop-Up Art Cart presents: Macrame Keychains

Get crafty with us and make your own macrame keychain! Choose between 4-5 different styles to make to spice up your lanyard!

November 9, 2022  
2:00-4:00PM  
Student Center



## Spooky Double Feature: Hocus Pocus & Nope

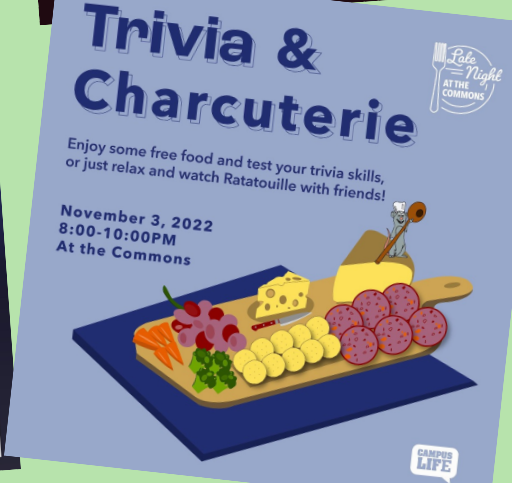
October 20, 2022  
7:00-11:00PM  
Student Center Auditorium



## Trivia & Charcuterie

Enjoy some free food and test your trivia skills, or just relax and watch Ratatouille with friends!

November 3, 2022  
8:00-10:00PM  
At the Commons



## TRAIN YOUR BRAIN WITH HYPNOTIST EVAN GAMBARELLA

MARCH 23RD, 2023  
7-9 PM  
STUDENT CENTER 310





# Engage. Connect. Belong.

- ▶ 250+ Student Orgs
- ▶ Student Government
- ▶ Recreation & Intramurals
- ▶ Campus Activities
- ▶ On-campus Employment
- ▶ Undergraduate Research
- ▶ Residence Hall Activities
- ▶ Service & Volunteerism
- ▶ Student Media
- ▶ Performing Arts
- ▶ Fraternities & Sororities
- ▶ Eagle Leaders Institute
- ▶ Athletics





## CAMPUS LIFE COACHES

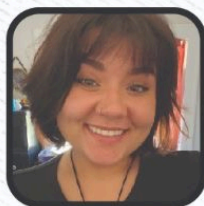
# ENGAGE. CONNECT. BELONG.

### WHAT WE DO

Campus Life Coaches support students by connecting them with opportunities for growth and community-building, and help them optimize involvement experiences. They help students develop motivation for designing their own college experience as they build life skills along the way through feature program offerings such as Program Pals, 1:1 coaching sessions, and Relationship Reboot.

CAMPUS  
LIFE

### MEET OUR 2022/23 CAMPUS LIFE COACHES



**Tristan Burk** *(she/her)*

**Major:** K-12 Spanish Education and TESOL  
Being involved on campus is a way to broaden your own perspectives and have a fuller experience while at school!



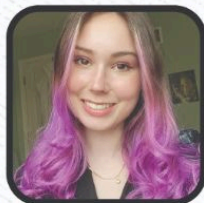
**Ciana Holloway** *(she/her)*

**Major:** Information Assurance and Cyber Defense  
**Minor:** International Business  
Getting involved on campus has helped me meet new people and create a memorable college experience.



**Caitlin Peterson** *(she/her)*

**Major:** Finance  
Being involved on campus has allowed me to learn a lot more about my career field outside of the classroom.



**Karley Misek** *(she/her)*

**Major:** Secondary Education Language, Literature, and Writing  
**Minor:** Psychology  
Campus involvement has helped with my own professional and personal development and grow as a person.

### CONTACT



Scan to request  
a CLC meeting

[campuslife@emich.edu](mailto:campuslife@emich.edu)

345 Student Center  
900 Oakwood Dr.

### WE HELP WITH...

- Acclimating to EMU
- Making connections
- Finding supportive communities
- Designing your college experience
- Building your resume
- Developing life skills

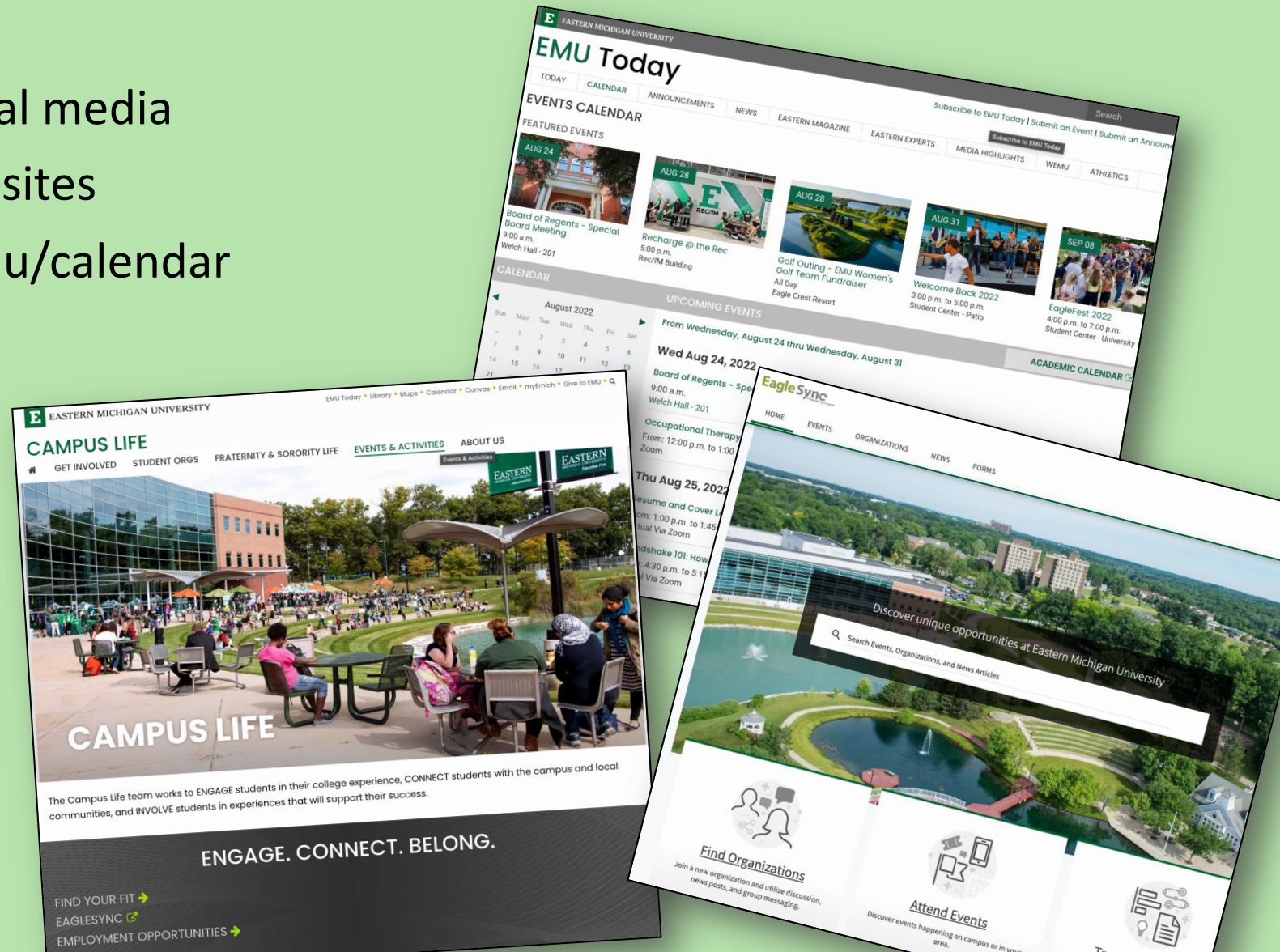


@EMUcampuslife



# Where to learn about getting involved & engaged:

- EMU Engage App
- University & department social media
- University & department websites
- University calendar: [emich.edu/calendar](http://emich.edu/calendar)
- EagleSync



# OUR PROFESSIONAL STAFF TEAM



**Sara Bamrick**

Coordinator,  
Student Engagement  
& Activities  
sbamrick@emich.edu

campuslife@emich.edu



**Karen Thompson**

Coordinator,  
Student Organizations &  
Fraternity & Sorority Life  
kthomp31@emich.edu

studentorgs@emich.edu



**Hayley Clock**

Coordinator,  
Orientation &  
Transition Programs  
hclock@emich.edu

orientation@emich.edu



**Lucas Langdon**

Director, Campus Life  
llangdon@emich.edu

emich.edu/campuslife  
@EMUCampusLife





**@EMUcampuslife**



# Questions?



# Our next activity for you all is lunch!

We will be dividing you into smaller groups to assist in getting everyone across campus and ease in lines at lunch. At this time, we would like to ask everyone in the rows above where our staff person is standing please exit the auditorium through the back.

If you do not believe you are able to make a 5-10 minute walk across campus - see the staff members just outside the Auditorium and we will make sure to get you there!