

BOARD OF REGENTS
EASTERN MICHIGAN UNIVERSITY

SECTION: 11

DATE:

June 19, 2012

RECOMMENDATION

MONTHLY REPORT & MINUTES
STUDENT AFFAIRS COMMITTEE

ACTION REQUESTED

It is recommended that the Student Affairs Committee Agenda for June 19, 2012 and the Minutes of April 17, 2012 be received and placed on file.

STAFF SUMMARY

At the April 17, 2012 meeting the Committee received the second part of a report on the transition to Residence Life and Residential Services, a presentation on Student Photovoice and closing remarks from SAC members and introductions of the new members.

The June 19, 2012 agenda includes introductions of new SAC members, a presentation on Samples of Student Engagement: Leadership, Services and Activities, and reports on the Minor Alcohol Exemption Bill and Undocumented Students.

FISCAL IMPLICATIONS

None

ADMINISTRATIVE RECOMMENDATION

The proposed Board action has been reviewed and is recommended for Board approval.

University Executive Officer

Date June 4, 2012

EASTERN MICHIGAN UNIVERSITY
Board of Regents
Student Affairs Committee

Tuesday, June 19, 2012
10:00 a.m.

Agenda

Room 201
Welch Hall

1. Approval of April 17, 2012 Meeting Minutes Regent Fitzsimmons
2. Introduction of new Student Affairs Committee Members Bernice Lindke
3. Sample of Student Engagement: Leadership, Services & Activities
 - Student Volunteerism: Local & Out-of-State Katie Holgreve Resendez
 - EMU Leadershape Jasmina Camo-Biogradlija
 - Greek Standards & Assessment Program & Greek Awards Casey Jordan
 - EMU After Dark/Lounge Series Gregg Costanzo
 - Ted-xEMU Gregg Costanzo
4. New Business
 - Minor Alcohol Exemption Bill (Medical Amnesty) Bernice Lindke/Gloria Hage
5. Old Business
 - Undocumented Students Regent Fitzsimmons
6. Announcements

**PRESENTATION TO THE STUDENT AFFAIRS COMMITTEE OF THE BOARD OF
REGENTS, TUESDAY, JUNE 19, 2012**

SAMPLE OF STUDENT ENGAGEMENT: LEADERSHIP, SERVICE AND ACTIVITIES

Introduction:

- According to Astin's (1999) theory of student involvement, a more highly involved student has higher persistence rates and is more likely to graduate. Astin (1999) described an "involved" student as "one who... devotes considerable energy to studying, spends much time on campus, participates actively in student organizations, and interacts frequently with faculty members and other students". Additionally, "students who ... participate in extracurricular activities of almost any type are less likely to drop out".
- General Education LBC requirements and credit
- Five degrees of separation – how ideas manifest through participation and spread to other areas.

1. Alternative Breaks

- 1 minute history of Alternative Breaks at EMU
 - 20th year of ASB at EMU
- This year's Alternative Break Experiences
 - 7 sites, 68 participants in ASB
 - Issues participants worked with included: refugee resettlement, trail restoration, animal rights and conservation, HIV/AIDS prevention and harm reduction, disaster relief, joyful experiences for children with life-threatening illnesses, camp experiences for campers of all abilities.
- Impact
 - Number of ASB participants over time
 - Impact on participants and/or sites, possible photos or video
 - Dana Hasty's vision from a LeaderShape camp was to do an international alternative spring break.

2. EMU LeaderShape

- 1 minute history of leadership at EMU and what it is
 - 1979 started leadership weekend camp
 - 2001 sent students to Natl. LeaderShape to "check-it out"

- 2002 EMU did its first EMU-based LeaderShape session
- 11 years of LeaderShape at EMU
 - 5 minute snippet of LeaderShape 2012 video
- Impact
 - Number of EMU LeaderShape graduates
 - Number of faculty/staff cluster facilitators
 - Some of the visions that have come to fruition
 - Ending with FASTforWARD vision to lead into Greek Life

3. Greek Standards and Assessment Program and Greek Awards

- History of GSAP
 - Developed by a group of students in 2005-06 based on a recommendation from a report by The Franklin Square Group, a group of College and University Presidents and Fraternity and Sorority Executive Directors, named "A Call for Values Congruence."
 - 7 years in existence to hold fraternities and sororities to a higher standard of excellence
- 5 GSAP areas
- Impact
 - Number of chapters that have participated in GSAP
 - Number of faculty/staff/alumni who have served as evaluators
 - Winners from 2012 Awards given at Greek Awards Ceremony on April 18, 2012
 - GSAP overall winners
 - Individual winners - include Pat Seick who won the 2012 IFC Individual Character Award, as lead in to the Lounge Series

4. EMU After Dark/Lounge Series

- A series of consistent, late night events designed to offer an alcohol-free alternative, provide an engaging social activity for students, provide experiences for students that will prepare them for adult socialization.
- in addition to bi-annual Snack and Studies, off-campus excursions, art happens events, guest speakers and artists and other major campus events, we aim to offer a late night event every Thursday and Friday night on campus.

- The series includes Friday night movies, Sky Lounge, Laugh Lounge, Lyric Lounge, and Storytellers Lounge.
- Impact
 - Number of late night programs and attendance over the course of 4 years.
 - Pat Sieck from Greek Award/how he made his way into Storyteller's Lounge and then into TEDxEMU

5. TEDxEMU

- TED is a nonprofit organization committed to ideas worth spreading. It is a clearinghouse that offers free knowledge and inspiration from the world's most inspired thinkers.
 - The program is designed to give communities, organizations and individuals the opportunity to stimulate dialogue through TED-like experiences at the local level.
 - A suite of short, carefully prepared talks, demonstrations and performances on a wide range of subjects to foster learning, inspiration and wonder - and to provoke conversations that matter.
- TEDxEMU took place on March 9, 2012. It featured innovative and effective approaches to student success and student engagement. These included holistic approaches to wellness, student voices & leadership, student learning, diversity & inclusion, collaboration, and technology based approaches to services. Connect to Pat Sieck, possible video or images.
- Impact
 - 34% of the presenters and performers were students. Over 50% of the attendees were students.
 - Participant Feedback
 - Next year's date

EASTERN MICHIGAN UNIVERSITY
Board of Regents
STUDENT AFFAIRS COMMITTEE
Minutes of April 17, 2012

MEMBERS PRESENT

Regents: Beth Fitzsimmons, Floyd Clack, Mike Morris

Administration: Melissa Ginotti

Students: Mallory Apel, Allison Barkel, Kristopher Bolds, Jeffrey Chicoine, Brittany Galloway, Aijalon McLittle III, Jelani McGadney, Thanh (Jimmy) Nguyen, Samantha Stamper, Shanita Williams

GUESTS

Administration: Sarah Ayers, Clyde Barnett, Duke Beard, Ruby Beckermeyer, Marney Buss, Cliff Camp, Dave Carroll, Jayne Carroll, Jophie Ran Chen, Carlos Costa, Kiana Daniels, Brian Fitzgerald, Perry Francis, Matt Gill, Shalonda Harris Casanova, Robert Heighes, Katie Holdgreve-Resendez, David Jacques, Ann Klaes, Brian Kulpa, Greg Millard, Glenna Frank Miller, Jeff Nesmith, Zara Northover, Charnessa Paige, Carl Powell, Nicholas Rachowicz, Gretchen Sanchez, Lewis Savage, Kyle Sutherland, Colleen Tompkins, Kathy Walz, Jessica Williams, Casey Wooster, Jessica Young

Students: Kody Klein

Regent Fitzsimmons convened the meeting at 2:01 p.m. Minutes of the February 21, 2012 meeting were approved as presented.

Transition to Residence Life and Residential Services: Part II

Part Two of the report on Residence Life and Residential Services was presented and the new Residence Life Living Learning Communities (LLCs) were highlighted. Living-learning communities include students living in theme-based halls or on specified floors. They also include a cluster of residents taking academically aligned classes with a residential component. The goal is to integrate academic content with daily interactions among students, faculty and staff who live and work in these programs. Mission and Vision statements have been developed and staff is working on strengthening Residence Life programming.

Student Photovoice

The Wellness Center and Greek Life have collaborated on a project called Student Photovoice that uses a concept called the Photo-novella as a tool to generate greater awareness and discussion around important issues in the EMU Fraternity and Sorority community. Students present photographs and narratives to the community to provide a student perspective of the issues affecting them and to create dialogue as to how to address their concerns. The topics are chosen by the students. "If you really knew me" was the topic for the third year of the project.

Closing Remarks from SAAC Members and Introductions of New Members

The out-going Student Affairs Advisory Council members reported on the impact that being on this Board meant to their growth as young leaders and reflected on their accomplishments. Additionally, they discussed issues that still need to be addressed, as well as the roadblocks they encountered. Library funding, a community garden, Academic Advising and the new calendar launching were some of the highlights. The new 2012-13 Student Affairs Advisory Council was introduced and is excited about their chance to make a difference at EMU.

The meeting adjourned at 2:45 p.m.

Respectfully submitted,

Cathie McClure
Student Affairs Committee Recording Secretary



Astin's Theory of Student Involvement

- ✱ ...a more highly involved student has higher persistence rates and is more likely to graduate.
- ✱ An involved student is one who... devotes considerable energy to studying, spends much time on campus, participates actively in student organizations, and interacts frequently with faculty members and other students”.
- ✱ Students who ... participate in extracurricular activities of almost any type are less likely to drop out.



VISION

Volunteer Center

- Tutoring, mentoring & friendship programs
- Immersion programs like Alternative Breaks
- America Reads
- Ongoing opportunities
- Best Buddies
- Learning Beyond the Classroom
- Kid Konnection
- One-day events
- Student organizations
- GREEN
- Habitat for Humanity

EASTERN
MICHIGAN UNIVERSITY
DIVERSITY AND COMMUNITY INVOLVEMENT

Immersion Programs

- Alternative Breaks
 - 20 years of Alternative Breaks at EMU
 - Founding member of Break Away
 - Added two weekend trips in 2011-12
 - 7 ASB trips with 68 participants

"I DIDN'T KNOW HOW MUCH I DIDN'T KNOW BEFORE THIS TRIP."

-EMU JUNIOR



Ongoing Opportunities

- 108 students met their LBC requirement by independently volunteering with our non-profit partners.

"I LEARNED THAT I AM A VALUABLE ASSET TO THE COMMUNITY IN WHICH I ATTEND SCHOOL. I THOUGHT THAT I COULD ONLY MAKE A DIFFERENCE BY GIVING MONEY. GIVING MY TIME HAS A LONGER AND STRONGER IMPACT ON THE COMMUNITY"

-EMU SENIOR



History of EMU Leadership Programs

- * 1979 - weekend conferences began
- * 2001 - students attended national LeaderShape
- * 2009 - homegrown leadership program
- * 10 years of LeaderShape at EMU



LeaderShape



- * Six day intensive experience
- * 53 faculty, staff and alumni facilitators
- * 597 EMU students are LeaderShape graduates



Impact

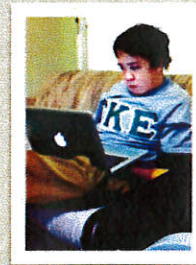


- * Color of Drums
- * Poetry Society
- * 1-in-3 Campaign
- * FASTforWARD





History



- * Designed to hold fraternities and sororities to a higher standard of excellence.
- * Developed by EMU students in 2005-06
- * Based on "A Call for Values Congruence" by The Franklin Square Group



Five Focus Areas

- * Intellectual development
- * Leadership development
- * Civic engagement
- * Integration of purpose
- * Positive relationships




Impact



- * This year 22 chapters participated in the assessment
- * 55 faculty, staff and alumni were evaluators



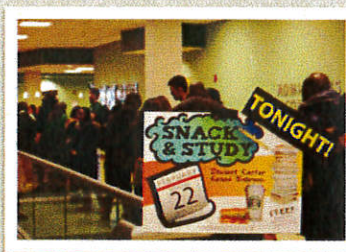


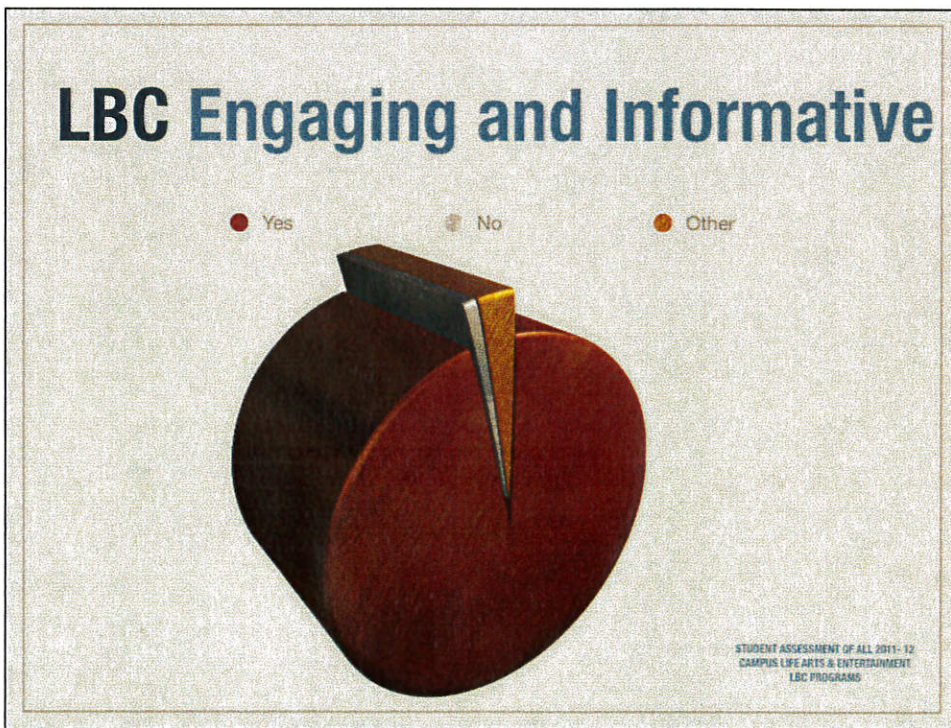
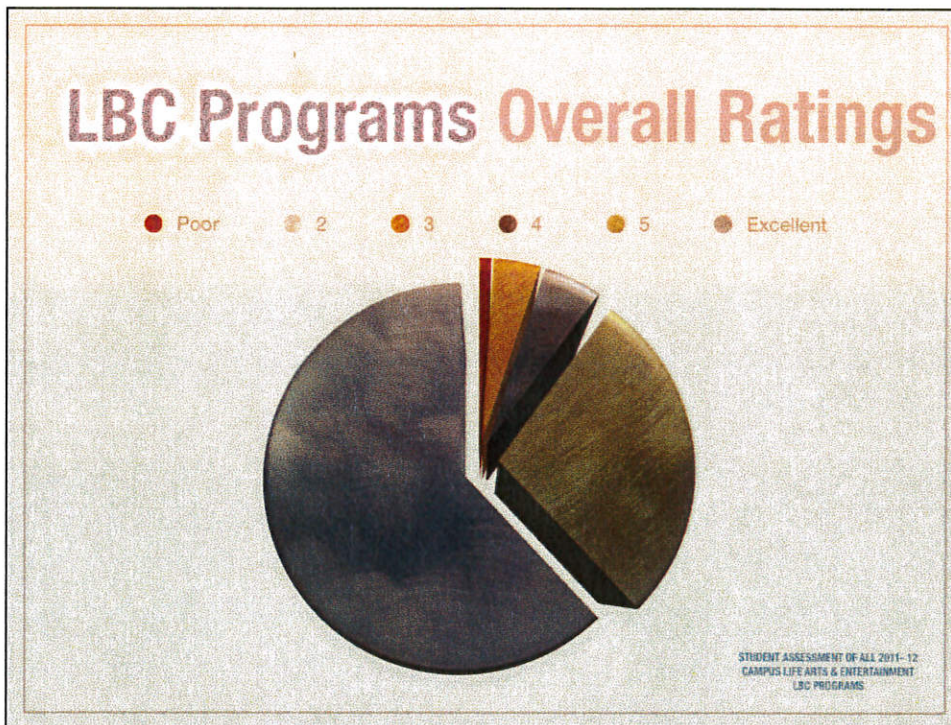
WHAT **EMU**
AFTER DARK

WHEN THURSDAYS AND FRIDAYS HOW **CAMPUS LIFE**

Annual Campus Life Programs

- * Off campus excursions
- * Guest artists and speakers
- * Typical college union activities
- * Major campus events
- * Collaborations





EMU After Dark



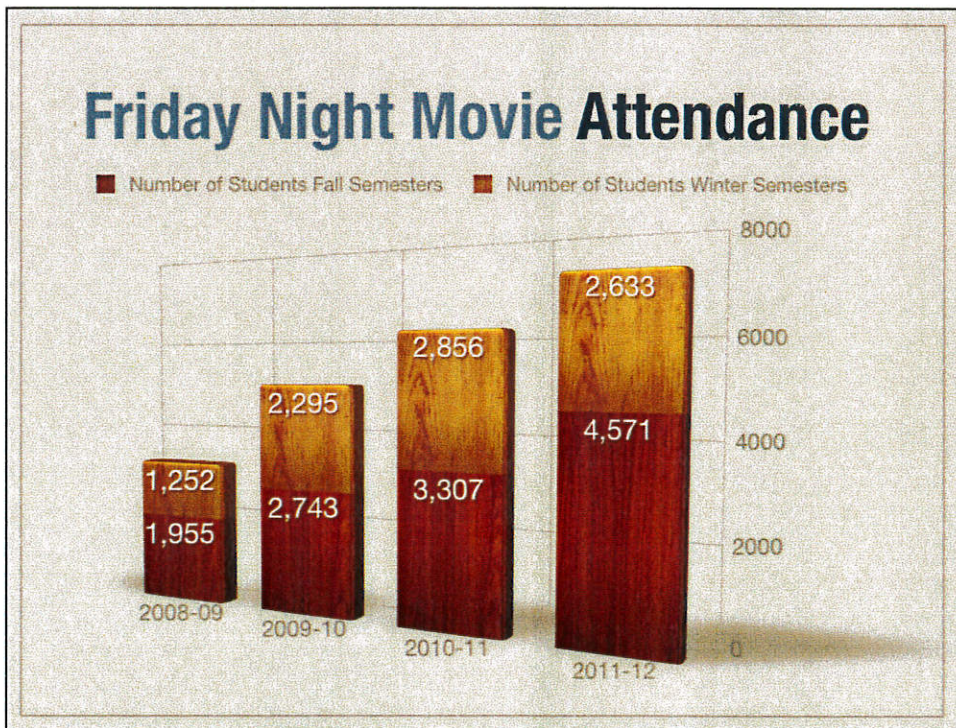
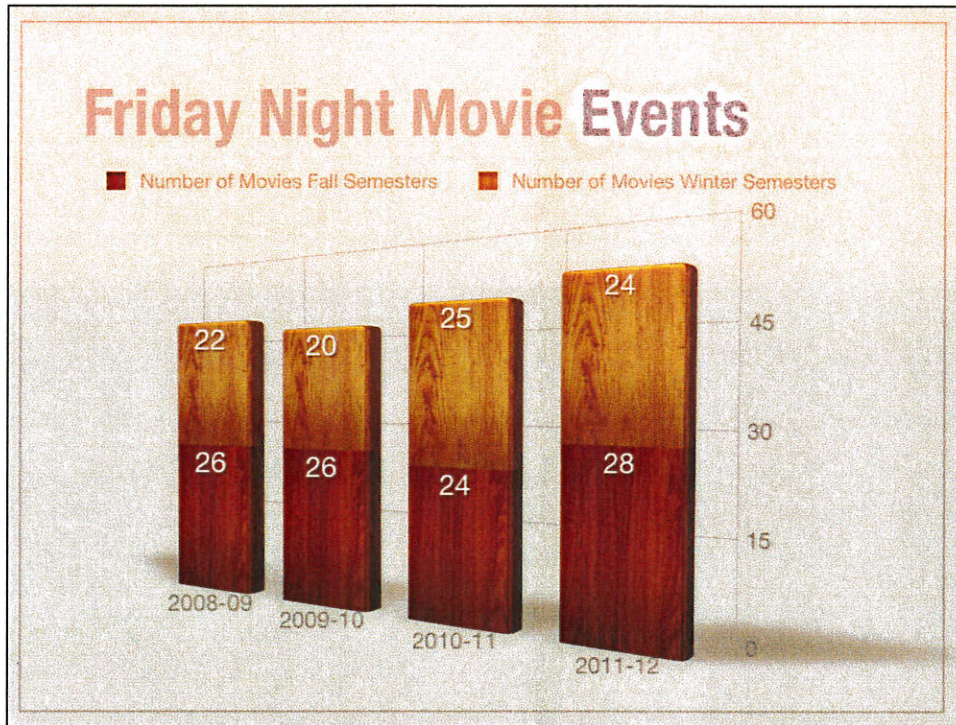
- * A series of consistent, late night events designed to:
 - * offer an alcohol-free alternative
 - * provide engaging social activities
 - * provide experiences that help prepare students for adult social settings

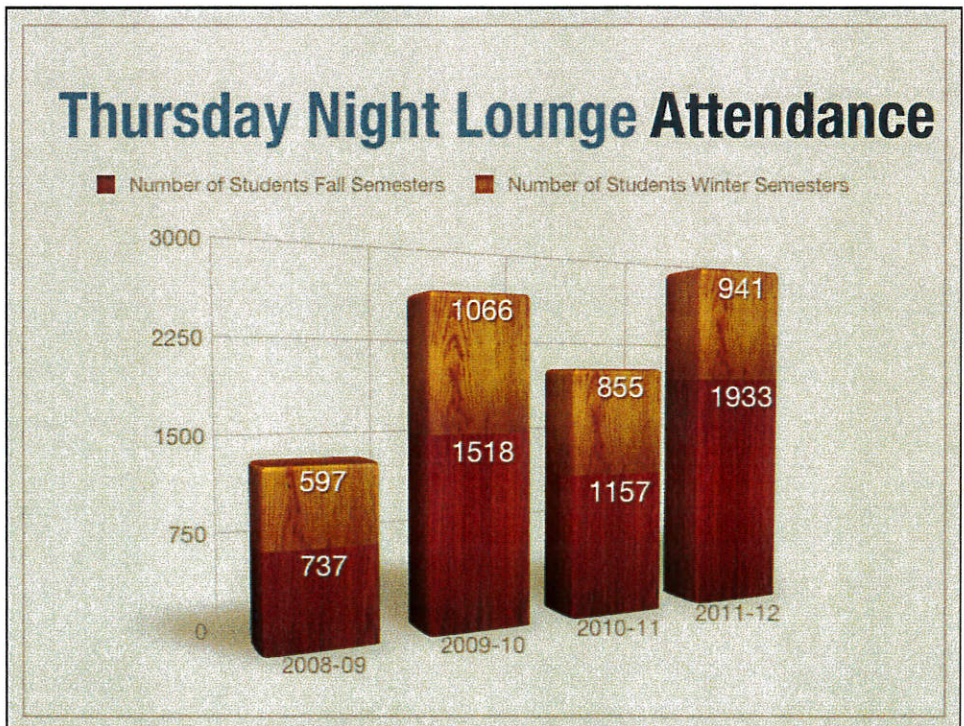
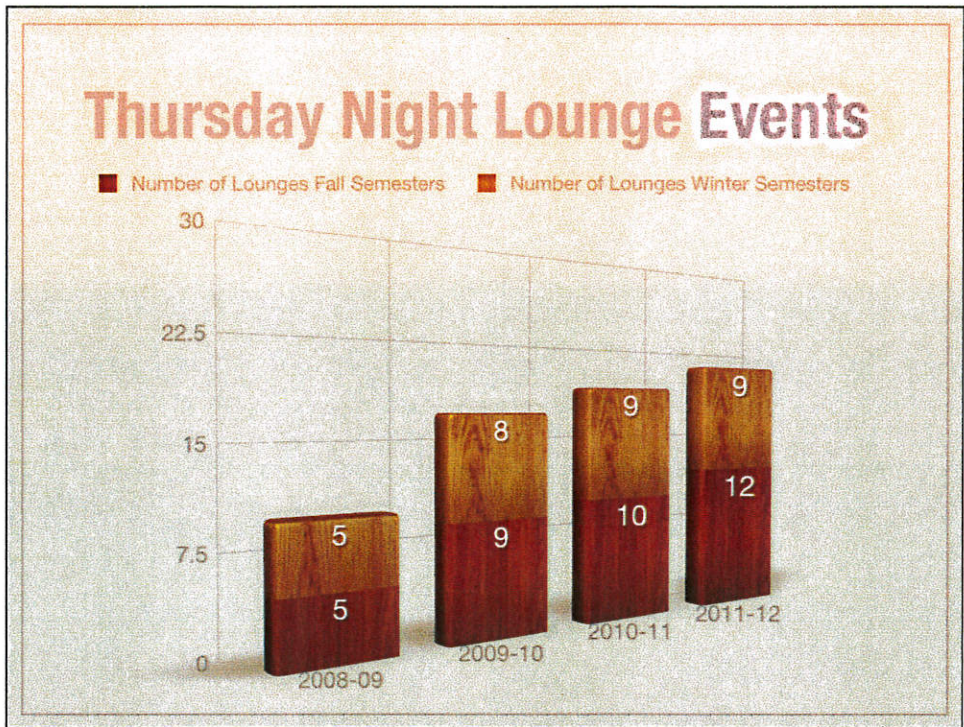


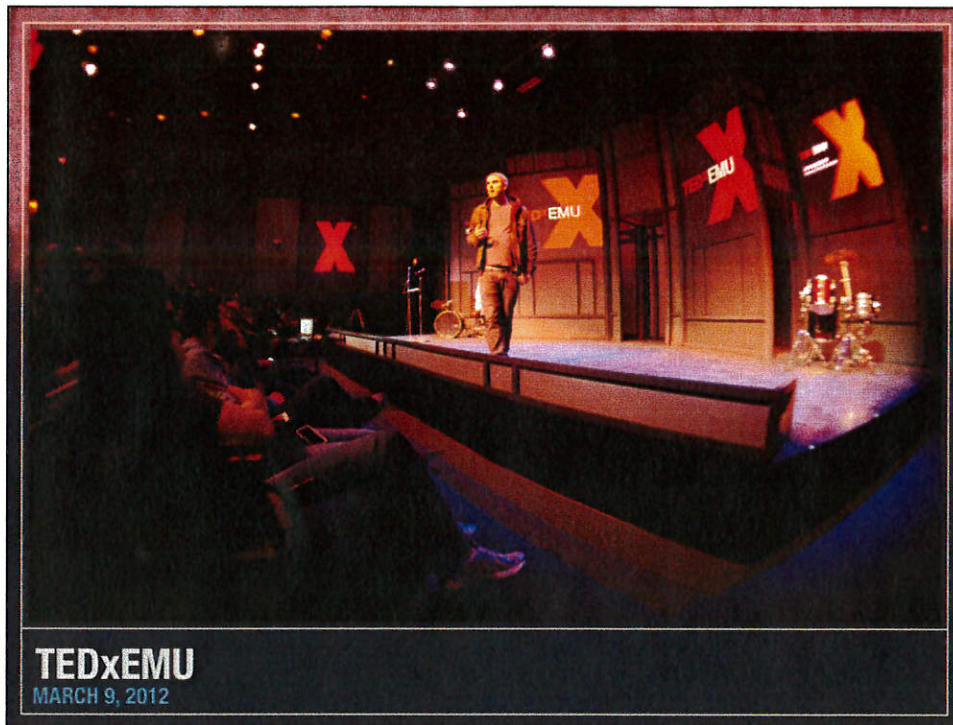
After Dark Programs

- * Sky Lounge
- * Laugh Lounge
- * Lyric Lounge
- * Storytellers Lounge
- * Friday Night Movies









TED



- * TED is a non-profit committed to ideas worth spreading.
- * It is a clearinghouse that offers free knowledge and inspiration from the world's most inspired thinkers.

TED^x
EMU
x = independently organized TED event

TEDx



- * TED-like experiences at the local level
- * Suites of short, carefully prepared talks, demonstrations and performances on a wide ranges of subjects
- * Intent: foster learning and provoke conversations



TEDxEMU



- * March 9, 2012 ~ 8:00 a.m. - 5:00 p.m.
- * Innovative approaches to student success and student engagement
- * YouTube and iTunes U



TEDxEMU

- * 34% of the presenters, performers and exhibitors were students
- * Over 50% of attendees were students

I was already beyond excited to attend a TEDx event, but to get to perform in it, was incredible.

TED has a reputation for having the brightest minds and the most talented performers. I knew that there was a high standard and was worried to be compared to the best.

Thank you for getting me to step outside of my comfort zone and participate in something bigger than me.

-EMU Sophomore

TEDxEMU Feedback

- * I left with a newfound hope for people, increased faith in ideas, and most of all, *I was bursting with pride for EMU.*
- * What happened today was very special for me, but I [also] think that for Eastern as a university and the community as well.
- * This conference is going to spark ideas and conversations that could serve as a kickstart to push EMU higher and higher.
- * Today is going to be a day that I remember for the rest of my life. The ideas that these talks sparked have already changed my viewpoint on college and life in general.
- * Getting to be a part of such an awesome program is going to be something that I hold very special forever.
- * Thank you...for your creative vision and your faith in me...to do something awesome.

TEDx
EMU
x = independently
organized TED event