

President's Report
EASTERN MICHIGAN UNIVERSITY
Board of Regents' Meeting
September 18, 2012

We are pleased to announce that we have the largest incoming class of new undergraduates in the University's 163 year history and the largest freshman class in a decade! New undergraduate enrollment for the fall opening term (includes freshmen, transfers, and others) totals 4,936 this fall -- an increase of about 4 percent from the previous high of 4,751 in 2001. The freshman class of 2,587 increased by 21 percent from 2,130 last fall. This is the largest incoming class of new freshmen since 2003. At a time when Michigan's population is declining and the projection of Michigan high school graduates is expected to fall from 100,009 in 2012 to 91,972 in 2022, Eastern grew!

The incoming freshman class also shows distinctly higher grades than last year, and is more diverse as well. Final figures indicate that 735 freshmen had a high school GPA of 3.50 or higher, compared to 512 last fall, an increase of more than 43 percent. In addition, 872 freshmen earned a high school GPA of 3.0 to 3.49, compared to 636 last year -- a 37 percent increase. Further evidence of the improved academic standing of students is enrollment in Eastern's respected Honors College -- up from 165 last fall to more than 370 this fall. Minority students, defined as African American, Hispanic or Native American, total 986 compared to 636 last year, a rise of 55 percent.

As a result of the enrollment gains and the reinvestment in upgrades to campus housing, more students are living on campus. This fall, 1,840 first-time students are living in EMU residence halls and apartments, about a 19 percent increase from last fall's total of 1,549. Overall, 3,343 students are living in EMU housing this fall, an increase of 11 percent from last year's total of 3,013. I would like to thank everyone who helped with move-in and orientation to help new students feel at home at Eastern.

I would like to congratulate the work of the faculty contract bargaining teams, led by Susan Moeller, EMU-AAUP president and professor of accounting and finance, and James Carroll, associate provost and associate vice president for research and administration, and interim dean of the Graduate School. A tentative agreement was reached two weeks before the expiration of the current contract in a positive spirit of cooperation and mutual respect. I also would like to acknowledge our clerical secretarial bargaining teams for their hard work on difficult issues, led by Michael Shumaker, chief negotiator for UAW CS local 1975 and library assistant, and David Trakul, director of employment relations and policy. All contracts in the past four years have been accomplished internally without outside counsel and without any interruption of work.

As I begin my fifth fall at Eastern, I thank the Board of Regents and all of our students, faculty and staff, alumni, friends and supporters for what we have accomplished together in the past four years. Fall enrollment has grown from 228,520 student credit hours to 246,059. Total student headcount has grown from 21,926 to 23,502. After capital improvements of over \$200 million, the campus looks beautiful and the \$90 million science complex and renovation of Pray-Harold and residence halls create a vibrant campus atmosphere to live and learn in. The endowment is at a record \$51,413,003 with completion of the "Invest, Inspire." campaign which raised \$56 million.

In the past four years, University House has hosted 241 events and 10,798 guests. We have hired over 100 new faculty and authorized 37 searches for next fall. At the same time, we have kept college affordable by keeping tuition low with an average increase of 2.86 percent and increased financial aid to a high of \$35.7 million. In the past two fiscal years we have eliminated 111 administrative staff positions totaling \$5,890,807 and increased spending on Academic Affairs by \$4.7 million, from 52.7 percent of our budget in FY 11 to 54 percent in FY 12. We are embarked on strategic planning for the future and will utilize a market analysis and benchmarking studies to inform the strategic plan process this fall. Campus safety is paramount and investment in a crime response team, dispatchers, cameras and technology have resulted in a decline in burglaries from 47 in 2008 to 13 last year. Crimes that do occur are swiftly solved. We have a stable and strong leadership team that loves Eastern. Our future is bright and strong.

This is a time of exceptional momentum, growth, pride and excitement on campus. Many other accomplishments are listed in the Appendix. The full President's Report is available on the University's website. Thank you, Chairman Wilbanks.

Susan Martin

Recognition:

- Senior **Clara Balmer** traveled to Alaska with fellow student **Naomi Watanabe** and physics professor **James Sheering** to research shooting radio waves into the ionosphere to create turbulence and measure its effect, which is applicable for GPS systems.
- **Dawn Bilobran**, a graduate student in historic preservation, was named a student-scholar by the Association for Preservation Technology for her abstract, "Deconstructing Detroit Partnerships in Reuse and Renewal." She will give an oral presentation based on her abstract at the APT conference in Charleston, S.C. in October.
- Sophomore **Valerie Eby** has won the Ken Peterson Award from Foresters, a life insurance company based in Toronto. The \$5,000 scholarship was awarded to Eby for her dedication to her community. WWJ radio recently interviewed Eby for her outstanding work as both a parent of 10 children and as a fulltime undergraduate student.
- **Chelsea Lockwood**, a first-year MBA student studying international business, presented her research, which focuses on the use of poetic devices in social media to increase ad response rates, at the European Institute of Retailing and Service Studies conference in Vienna. The paper was co-authored with EMU business student **Amy Rule**, and **Sheila Sasser**, an associate professor of marketing in the College of Business.
- Student **Fatisha Moteso** was awarded a Turkish Coalition of America scholarship to study at Koc University in Istanbul, Turkey for the Fall 2012 semester. Moteso, of Ann Arbor, is an undergraduate student in the College of Business studying international business.
- Eastern Michigan's **student chapter of the Society for Human Resource Management** has once again earned a Superior Merit Award from the national organization. EMU's chapter was one of the top ten chapters in the country. Nearly 500 chapters applied for the honor. **Fraya Wagner-Marsh**, head of EMU's management department in the College of Business, and lecturer **Toni Knechtges**, are co-advisors for the group.
- Eastern Michigan's Business Side of Youth's program, **Digital Inclusion**, recently partnered with HDL (Wireless Ypsi) and the Ypsilanti Housing Commission to bring free wireless Internet access to two low-income housing developments in Ypsilanti. Digital Inclusion is both a youth development program and a social enterprise. EMU students train the young participants in computer refurbishing and software installation.
- **Gregg Barak**, professor of criminal justice and criminology, has published his book, "Theft of a Nation: Wall Street Looting and Federal Regulatory Colluding,"

that examines Wall Street's recent financial meltdown and its impact on the country. Dr. Barak is a nationally known criminologist.

- **Ann Blakeslee**, professor of English, was honored by the Society for Technical Communication with the Ken Rainey Award for Excellence in Research. The award is given annually to individuals whose research has made outstanding contributions to the field of technical writing.
- **Dibya Choudhuri**, professor of counseling, has become Chair-Elect of the National Board of Certified Counselors, Inc. and Affiliates (NBCC). NBCC is an independent not-for-profit credentialing body for counselors established to monitor a national certificate system. The organization will provide support for Dr. Choudhuri's travel throughout the U.S. and to Argentina and Venezuela next year.
- **Sam Fullerton**, a professor of marketing in the College of Business, was named an 'extraordinary professor' by North-West University in South Africa. He was honored for his work as an external moderator, providing input on the business school's comprehensive exam, grading marketing exams and serving as an external reviewer for dissertations submitted for an advanced degree in marketing.
- Eastern Michigan public relations professor **Regina Luttrell** will be presenting at the Public Relations Society of America's International Conference in October with EMU PR alum **Jennifer Brown** and the Chief Marketing Officer of IZEA Ryan Schram. The presentation, "The Integration of Public Relations: Can't We All Just Get Along?" looks at the changing workplace and how the functions of teams change.
- Eastern's **Bachelor of Science in Mechanical Engineering Technology** has received initial accreditation by ABET retroactive to October 1, 2010 through September 30, 2014.
- The **Princeton Review** has named Eastern Michigan University as **one of the best colleges in the Midwest** for the tenth consecutive time, and it was cited for being a "great value," in terms of tuition and education.
- Eastern Michigan's linguists have teamed up with Google and the University of Hawai'i at Manoa to preserve endangered languages. The **Endangered Languages Project** provides information on endangered languages and helps speakers preserve their languages and cultures. More than 3,000 endangered languages have been collected. Anthony Aristar, professor of linguistics, is moderator of The LINGUIST List, the world's largest online linguistics information resource.
- The **Michigan Small Business & Technology Development Center** and Eastern Michigan will offer a start-up training class for veterans, starting October 13 at the EMU Livonia campus. The veteran-specific program will help

entrepreneurs evaluate business opportunities and develop an action plan for owning their own businesses.

- EMU's associate vice president of marketing, **Ted Coutilish, and his wife Mary Beth Langan** received the Halstead-Bresnahan Family Award at the 13th Annual International Fragile X Conference. The award recognizes those who have made a profound difference to families affected by Fragile X Syndrome. Fragile X Syndrome is the most common known cause of inherited intellectual disability and the most common known genetic cause of autism or autism spectrum disorders.
- **Jess Klein**, program coordinator for EMU's Women's Resource Center, will be presenting at the National Women's Studies Association Conference in Oakland, California in November. Her topic, "Bridging the Gap Between Theory and Activism: Interweaving WGST Coursework with Women's Center Feminist Action While Integrating As-L and Information Literacy," is a cross-divisional collaboration that explores the integration of in-class instruction, civic engagement and social action. She will be presenting with Dr. Solange Simoes, assistant professor of sociology and women's and gender studies; Suzanne Gray, information literacy librarian; and two undergraduate students, Madelyn Prebola and Brooke O'Neil.
- **Chris Sorenson** was named the new manager and chief flight instructor at Eagle Flight Center located at Willow Run Airport. EMU's aviation program offers bachelor's degree programs in aviation flight technology, aviation management and dispatch certification.
- Three EMU employees were recognized at the American Association of University Women – Ann Arbor Chapter annual spring luncheon on May 15. **Betty Stremich** (Foundation) and **Glenna Frank Miller** and **Michele Rich** (Student Affairs) were noted for their collaborative work with the AAUW to bring 10 women students from EMU to the National Conference for Women Student Leaders in Washington, D.C. in June 2012. This is the third year of collaboration and it resulted in double the number of EMU student participants this year.
- **Linda Yohn** was named Jazz Programmer of the Year in a major market for the fourth consecutive year at the JazzWeek Summit's annual awards. JazzWeek is the weekly online publication dedicated to jazz and jazz radio programming. **WEMU** was runner-up for National Station of the Year.
- EMU alumnus **Marquin Parks**, who participated in the **Eastern Michigan Writing Project**, published his first book, "Wrinkles Wallace: Knights of Night School." Parks, who specializes in children's books, mixes humor with real-life issues to teach children. EMU's program is part of the National Writing Project, an intensive four-week session for teachers and administrators who teach writing in various areas.

Gifts/Grants:

- **Lynn Malinoff** and **Russell Olwell** (Institute for the Study of Children, Families and Communities) received a \$674,725 award from the Michigan Department of Education in support of the project, "21st Century Community Learning Centers, Bright Futures at Middle and High Schools." This is year four of a project whose goal is to increase academic achievement, academic learning, non-academic learning, knowledge of career options and how to achieve them, and the experience of progressing to the next level, for middle and high school students in seven local districts.
- **WEMU-FM 89.1** achieved a one-year record \$651,684 in contributions, pledges and commitments on June 26 – \$50,000 more than the previous one-year high.
- **David Pawlowski**, assistant professor of physics and astronomy at Eastern Michigan, recently won \$345,418 from NASA for a project that examines the Martian atmosphere. It is the first NASA grant directly funded to Eastern Michigan since 1997. His three year project, "Understanding the Time-Dependent responses of the Martian Upper Atmosphere to Solar Flares and Dust Storms," promises to provide an in-depth, quantitative understanding of a planet that can't protect itself from solar wind because it no longer has a shield, or global magnetic field.
- **Mansoor Moaddel** (professor of sociology, anthropology and criminology) received a \$236,000 award from the Office of Naval Research, Human, Social, Cultural and Behavior Sciences to support his project focusing on a cross-national analysis of Islamic fundamentalism.
- Eastern has been selected to receive further funding under the **Ronald McNair Post-baccalaureate Achievement program** in the amount of \$220,000 from October 2012 through September 2013.
- **Barbara Scheffer** (CHHS Dean's Office) received a \$166,000 award from the National Institutes of Health, in partnership with the University of Michigan, in support of the project "UM: NIH Michigan Bridges to Doctorate." This is a three-year program in which 12 students from underrepresented populations in terminal masters' social work and nursing degree programs will be provided with academic preparation and skills to facilitate their eventual successful completion of doctoral degrees emphasizing behavioral sciences and health disparities research.
- **Helen Aristar-Dry** and **Anthony Aristar** (Institute for Language Information and Technology) received a \$153,900 award from the National Science Foundation to support the project, "MultiTree: Completing the Library of Language Relationships." The project will augment the MultiTree database with missing family trees, and ensure the maintenance of site content by building facilities to engage more scholars in the update process.

- **William Tucker** (English Language and Literature) received a \$139,000 award from the National Writing Project in support of the EMU Writing Project – 2012-2013. This project will continue to develop and conduct Summer Invitational Institutes for teachers of writing from all grade levels.
- **Leslie Atzmon and Ryan Molloy** (Art) received a \$100,000 award from the National Endowment for the Arts to support their “Open Book” project, which involves the production and dissemination of a high-end catalog for an exhibition of experimental artists’ books. A workshop will focus on creating artists’ books that can be understood as design objects.
- Thanks to generous donors, the **EMU Marching Band** has new uniforms that fuse a traditional military style with a contemporary flair, accented by a richer green. Inside the jacket are two historic logos representing EMU’s past. Alumnus **Ed Jakeway and his wife, Suzanne**, started off the fundraising campaign for the new uniforms by donating a \$25,000 leadership gift. More than \$80,000 was raised during the ongoing campaign. The remainder came from the President’s discretionary fund.
- **Steven Huprich**, associate professor of psychology, has received \$12,000 from the American Psychoanalytic Association and \$4,000 from the International Psychoanalytic Association for a one-year research project. Huprich will evaluate the clinical usefulness of three methods of assessing personality disorders. His graduate students will be involved in data collection.
- **Claudia Wasik and Lucy Parker**, both EMU graduates and former EMU tennis coaches, have generously contributed to the building of new tennis courts at the University. Wasik contributed a leadership gift and Parker gave a supporting gift. The six courts, which will sit north of the EMU Indoor Practice Facility, are set to open for the women’s tennis team’s fall practices. The courts will be called the **Claudia Wasik Tennis Complex**.

Of Note:

- **John W. Porter**, former president of Eastern Michigan, who led Eastern from 1979-89 during its ‘Decade of Advancement,’ died June 27 at age 80. Porter served as EMU’s 17th president during a time when the University experienced numerous achievements. These included establishing the Colleges of Technology and Business, achieving record enrollment growth, strengthening academics, and the building of the Olds Student Recreation Center. The John W. Porter College of Education Building and the annual John W. Porter speaker series in urban education were created in his honor.
- **Michael McGuire**, whose life touched thousands of students in music therapy, died July 16. McGuire, a professor of music therapy, elevated EMU’s program to national prominence. Before his death, he was given the American Musical Therapy Association’s Presidential Award for outstanding service as an educator,

mentor, innovator and leader. He also was presented with the association's Great Lakes Region 2012 Service Award.

Events:

- More than 3,300 new and returning students and their families experienced the excitement of the EMU campus when they participated in **Fusion**. Fusion featured Move-In-Day, the Convocation Ceremony/Welcome ceremony, New Student Orientation and the CloseUp Performance Theatre among other activities. More than 200 student volunteers and student-athletes helped with Move-In. Later in the week, students participated in such events as Fajita Fest; Community Plunge, a volunteer program in the Ypsilanti neighborhoods; Meijer Mania; and, the on-campus Eastern Block Party.
- The **Autism Collaborative Center** at Eastern offered a series of special summer camps, called S.P.L.A.S.H., designed for children on the autism spectrum. Campers were exposed to socially engaging, senior rich and creative recreation opportunities. The week-long camp themes were The Mad Scientist, Disney Across the Ages, Olympics 2012, Wacky Holiday Week, Author's Week, and Who's Your Hero.
- Eastern Michigan students traveled back to 1500s England during the summer semester to follow in the footsteps of the dramatist William Shakespeare. Sponsored by EMU's **study abroad program**, the tour provided 11 students with a two-week opportunity to experience Shakespeare's world while earning three credit hours. **Craig Dionne**, professor of English and a Shakespearean scholar, led the students through the Bard's haunts.
- Science, technology, engineering and mathematics (STEM) educators and industry leaders came together at the **Synergy Summit conference** at EMU last month. The conference provided an opportunity for educators from colleges and universities, K-12 schools and the business industry to share ideas and create opportunities to improve a student's interest in learning about the STEM disciplines.
- Eastern Michigan again played host to the three-day **Robotics State Championship**. Eastern has held the most robotics events in the state's history with EMU students and alumni mentoring many of the teams.
- The University continues to expand its international outreach. **Ambassadors from the Republics of Namibia and Botswana** visited campus August 16 to explore academic partnerships and exchange programs. Eastern's Ambassadorial and Consular Corps Liaison Office, which partners with the Consular Corps of Michigan, sponsored the event.

- The **School of Nursing** hosted a group of Taiwanese nursing students and their professor last month as part of the School's outreach program. The students, from Hung Kuang University School of Nursing, studied innovative nursing roles and policy issues in the U.S. The exchange program began when six senior nursing students at EMU traveled to the Taiwanese university in 2011 for their community clinical rotations.
- **EMU's planetarium** debuted the movie, "Star" during the 2012 Ypsilanti Heritage Festival. Visitors were treated to a galactic experience where black holes, pulsars and other celestial facts were discussed. **Norbert Vance**, professor of astronomy and observatory director, and astronomy club members also conducted tours of Sherzer Hall's historic observatory.
- **Jack Kay**, a professor in communication, media and theatre arts, discussed the dramatic increase of hate messages in cyberspace last month at the Holocaust Memorial Center Zekelman Family Campus in Farmington Hills. Kay, an expert on extremist groups, frequently lectures on hate music and hate messages in cyberspace.
- EMU will launch its **campaign to purchase Steinway pianos** that will be used in training future performers and music educators. The Department of Music and Dance and the EMU Foundation will begin the campaign with a special film and performance event at the Michigan Theatre in Ann Arbor Sept. 23. The documentary, "The Making of Steinway L1037," follows the creation of a Steinway concert grand piano. After the film, EMU faculty and students will perform on the grand piano featured in the movie.
- Student Government President **Matthew Norfleet** and Vice President **Desmond Miller** will host their **first student town hall open forum** Sept. 19. Norfleet has also arranged for EMU to take part in **TurboVote**. Students can go to emich.turbovote.org and sign up for text message alerts and emails that will remind them about elections, information about their local precincts and request voter registration forms and absentee ballots.
- To celebrate Constitution Day, the **Department of Political Science, Division of Academic & Student Affairs** and the **College of Arts and Sciences** hosts a program this afternoon (Sept. 18) about 'Lawrence v. Texas,' a landmark decision by the U.S. Supreme Court that halted decades of discrimination against gay Americans.
- Eastern Michigan will host a golf outing Sept. 28 that honors the late Greg O'Dell, former chief of police at EMU who died in December 2011. Proceeds will fund the **Greg O'Dell Criminal Justice Student Scholarship** for students pursuing careers in criminal justice.
- EMU hosted **George Zimmerman**, vice president of Travel Michigan, on July 9. Zimmerman shared the story behind **Pure Michigan**, one of the world's most

successful tourism campaigns. In 2011, the campaign had its strongest returns as the brand gained further traction nationally and drew more people to the state.

- Eastern Michigan University faculty, staff, students and the Ypsilanti community participated in a **Pure Michigan video shoot** in front of the Ypsilanti Water Tower. The new Pure Michigan commercial will involve 50 cities across Michigan. The Ypsilanti video portion will showcase the historic water tower, EMU, the Michigan Firehouse Museum, the Auto Heritage Museum and Ypsilanti citizens during a four-second clip.

Athletics highlights:

- Baseball: Five members from the 2012 EMU baseball team were named to the Academic All-MAC team. **Bo Kinder, Brent Ohrman, Sam Ott, Tucker Rubino** and **Steve Weber** each earned the honor. The special team is for student-athletes who have excelled in academics and athletics.
- Baseball: EMU infielder **John Rubino** has been named to the first team of the Horizon Air Summer Series All-Series Team for his outstanding performance as a member of the Marysville Gold Sox.
- Baseball: Starting pitcher **Steve Weber** has been named to the top 75 prospects in the Rochester, Minn. based Northwoods League by Perfect Game USA. Weber was drafted in the 33rd round of the 2012 Major League Baseball Draft.
- Baseball: Recent EMU graduates and baseball players **Matt Hitt** and **Ben Magsig** have become the first from the class of 2012 to sign professional contracts. Hitt signed with the Arizona Centennials of the Freedom Pro Baseball League, while Magsig joined the London Rippers of the Frontier League.
- Women's Cross Country: **Victoria Voronko** finished second at the Mel Brodt Invitational on Sept. 1, and won the individual title at the George Fales Invitational, Sept. 7 in Three Rivers, Mich.
- Football: EMU sophomore player **Demarius Reed** was named to the 2012 College Football Performance Awards – Special Teams Watch List. He is among 30 individuals across the country who is on the Watch List for the 2012 CFPA Punt Returner Trophy.
- Football: EMU tight end **Garrett Hoskins** has been added to the 2012 CFPA Offensive Awards Watch List.
- Football: Former EMU football player and offensive lineman **Bridger Buche** signed a one-year deal with the Pittsburgh Steelers as a rookie free-agent.

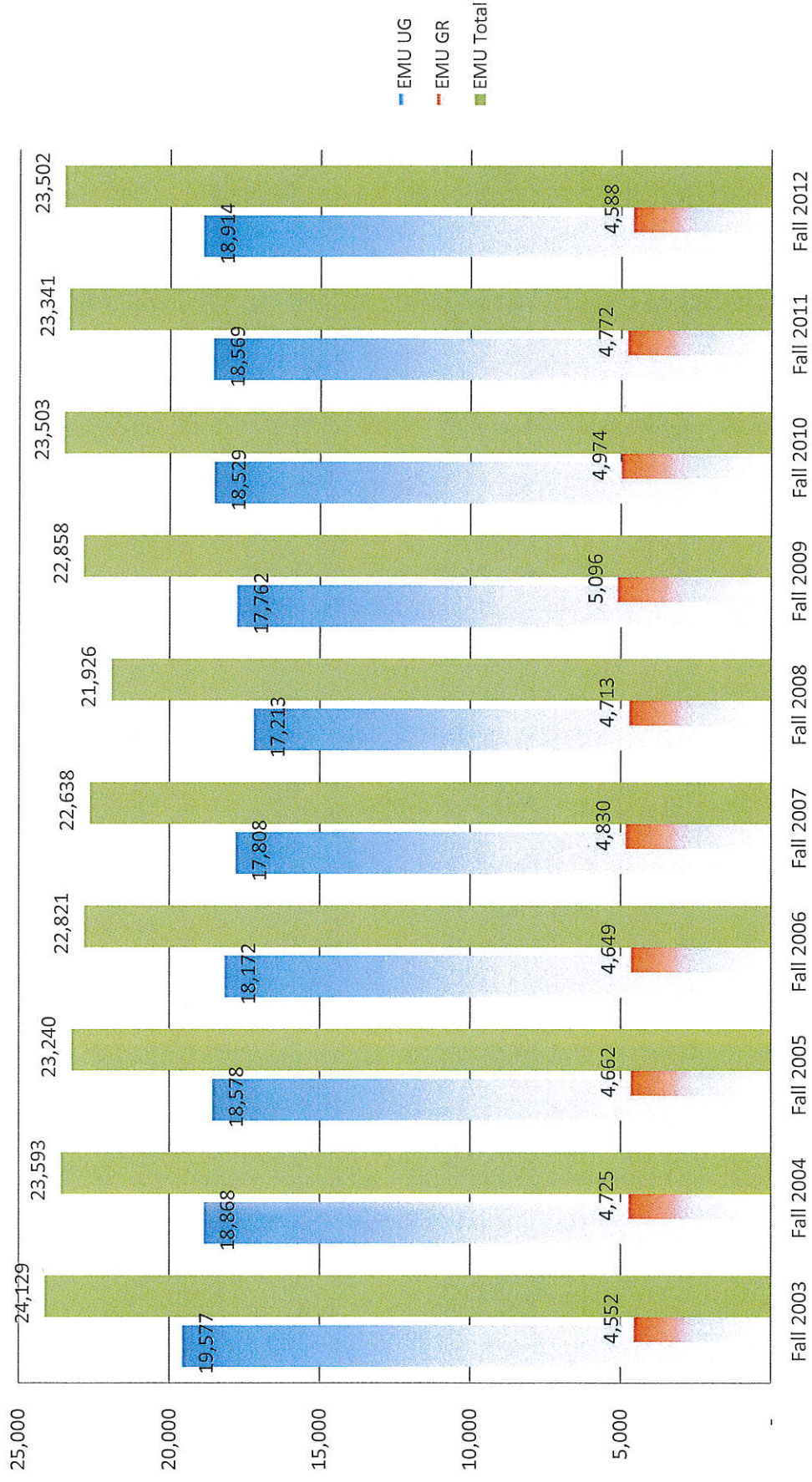
- Men's Golf: EMU golfer **Brian Churchill-Smith** shot a 68, two under par, at the Burlington Golf and Country Club to finish the competition and win the John Honderich Trophy at the Toronto Star Men's Amateur tournament.
- Men's Golf: **Brian Churchill-Smith** won the 2012 National Golf Club of Canada Invitational at the National Golf Club in Ontario. He shot a tournament-best 147 in the two-round invitational. EMU golfer **Graham Hill** also participated, placing eighth with a score of 152.
- Women's Golf: Head coach **Ryan Ray**'s 2012 team, along with two individuals, has earned Intercollegiate Tennis Association (ITA) national academic awards. EMU players **Nino Mebuke** and **Marcela Rivero** were both named to the ITA National Scholar-Athlete squad.
- Women's Golf: EMU golfers **Corey Crossan**, **Meredith Fairbairn** and **Alyssa Kwon** were named to the National Golf Coaches Association (NGCA) All-American Scholar Teams for Division I.
- Men's Track & Field: Eight members of the EMU men's track and field squad earned an Academic All-MAC award. **Max Babits**, **Cody Chabola**, **Harry Dixon**, **Terefe Ejigu**, **Joshua George**, **Grzegorz Kalinowski**, **Daryl Smith** and **Joe Tesner** were each named to the Academic All-MAC team.
- Men's Track & Field: Alum **Jamie Nieto** competed in the XXX Olympiad in London in July, finishing sixth in the high jump finals while competing for Team USA. Alum Eric Alejandro competed for Puerto Rico and set a personal best in the 400-meter hurdles, but failed to qualify for the final round.
- Women's Track & Field: **ReJeana Marigna** was the sole member of the EMU women's track and field squad to be named to the Academic All-MAC team. Team members **Cassie Coffman**, **Tiffany Kincaid**, **Tiara Oates**, **Rachel Quaintance**, **Angela Scarber**, **Brooke Sciuillo**, **Ashley Warley** and **Natalie Webb** each earned honorable mention.
- Women's Track & Field: **Lydia Gomez-Diaz**, **Angela Scarber** and **Victoria Voronko** were named to the USTFCCA All-Academic Track & Field team for the 2011-2012 year.
- Softball: **Katy Blaharsi** was the lone Eagle to be named to the 2012 Academic All-MAC conference team.
- Volleyball: The **EMU volleyball team** was one of 102 NCAA Division I programs to receive the American Volleyball Coaches Association (AVCA) Team Academic Achievement Award for the 2011-2012 school year. The honor marks the 12th time in the program's history, and the 8th consecutive year that EMU has earned the award.

- Volleyball: **Kim Hildreth** and **Rachel Iaquaniello** were each selected to head to Hermosa Beach, California for the 2012 senior Beach High Performance Program directed by USA Volleyball.
- Volleyball: **Rachel Iaquaniello** was named Most Outstanding Player at the Memphis Invitational, Aug. 24 – 25 and was named to the All-Tournament Team and the UIC Tournament, Aug. 31 – Sept. 1.
- Volleyball: **Kristen Baker** was named the North Texas Tournament Most Valuable Player; and teammates **Rachel Iaquaniello** and **Erin Short** were named to the All-Tournament Team as EMU won the team title.
- **Nikki Bober** has been named the director of women's basketball operations at Eastern Michigan University. Her primary responsibilities will be coordinating the Eagles' travel arrangements, directing the summer basketball camp program, supervising the managerial staff, as well as other administrative duties. Bober was a standout student-athlete at the University of Nebraska-Lincoln.
- EMU athletic trainer **Steve Nordwall** was named the Michigan Athletic Trainers Society (MATS) Distinguished Athletic Trainer Award honoree for 2011-12. Nordwall just completed his 10th season with the Eagles.
- The **EMU baseball team** will host its annual golf outing on Sunday, Sept. 30 on the Golden Fox Championship Course at the Fox Hills Golf Club in Plymouth, MI.
- The **Eastern Michigan-Michigan State football game**, scheduled for Saturday, Sept. 22, will be televised on the Big Ten Network. Kick-off is at 3:30 p.m. at Spartan Stadium. MSU and EMU will be meeting for the ninth time in the series, which started in 1898.
- The **EMU women's golf team** held its seventh annual golf outing and fundraiser on Sept. 9 at the Eagle Crest Golf Club. For the past seven years, the women's golf team has raised more than \$100,000 in additional funds for its program as a result of this fundraiser.

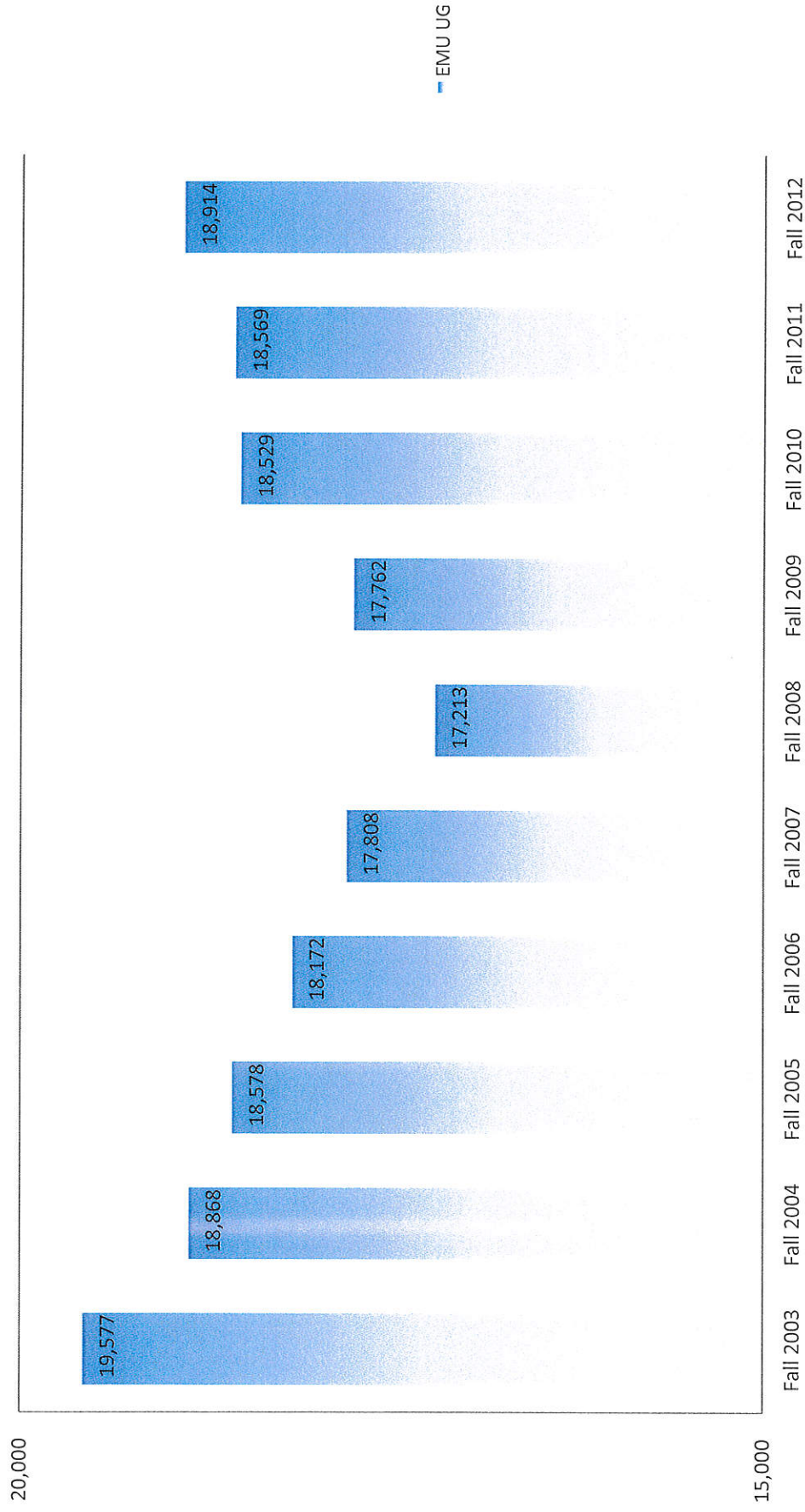
* * * * *

Eastern Michigan University

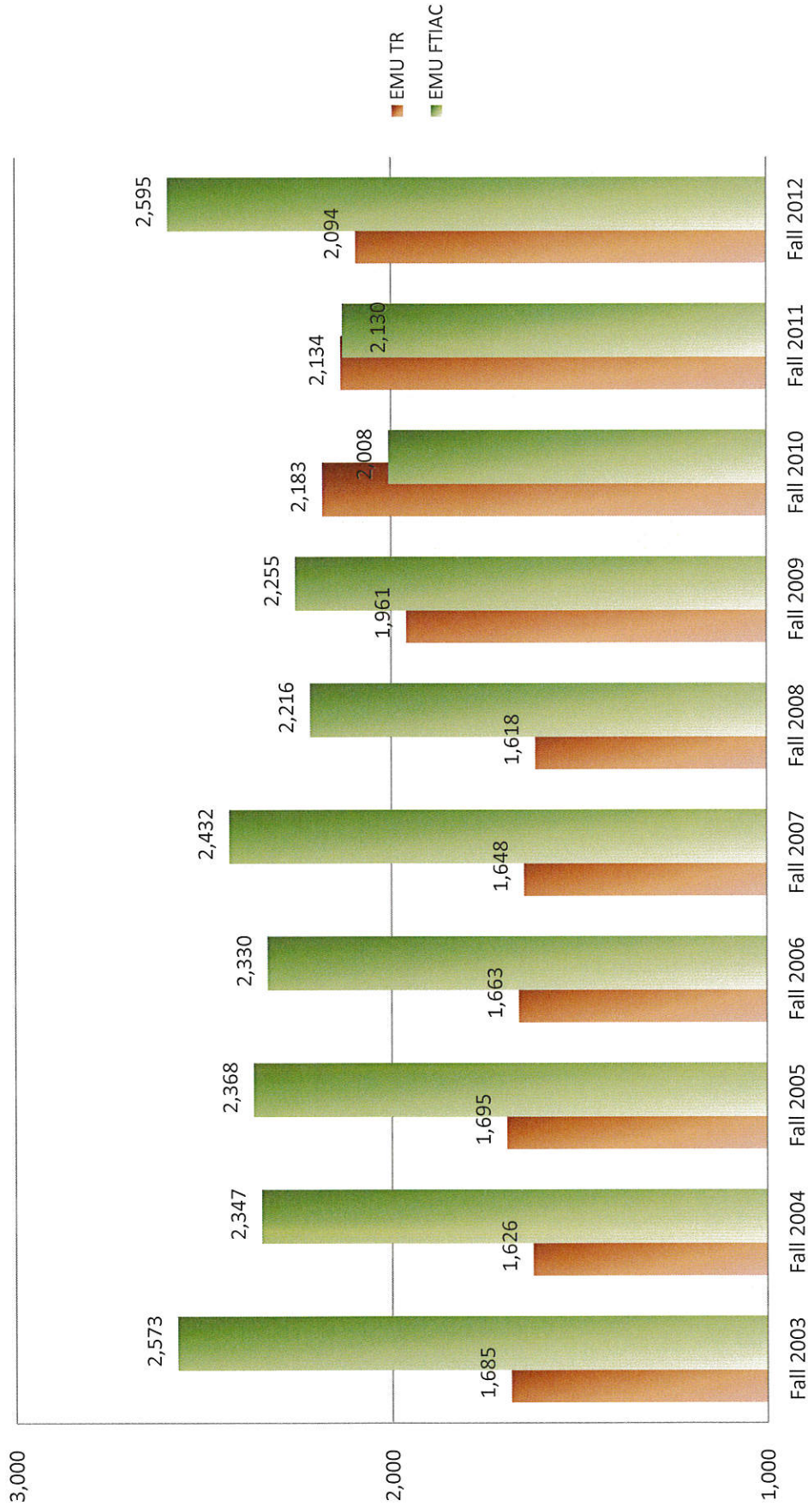
Fall Enrollment (Headcount)



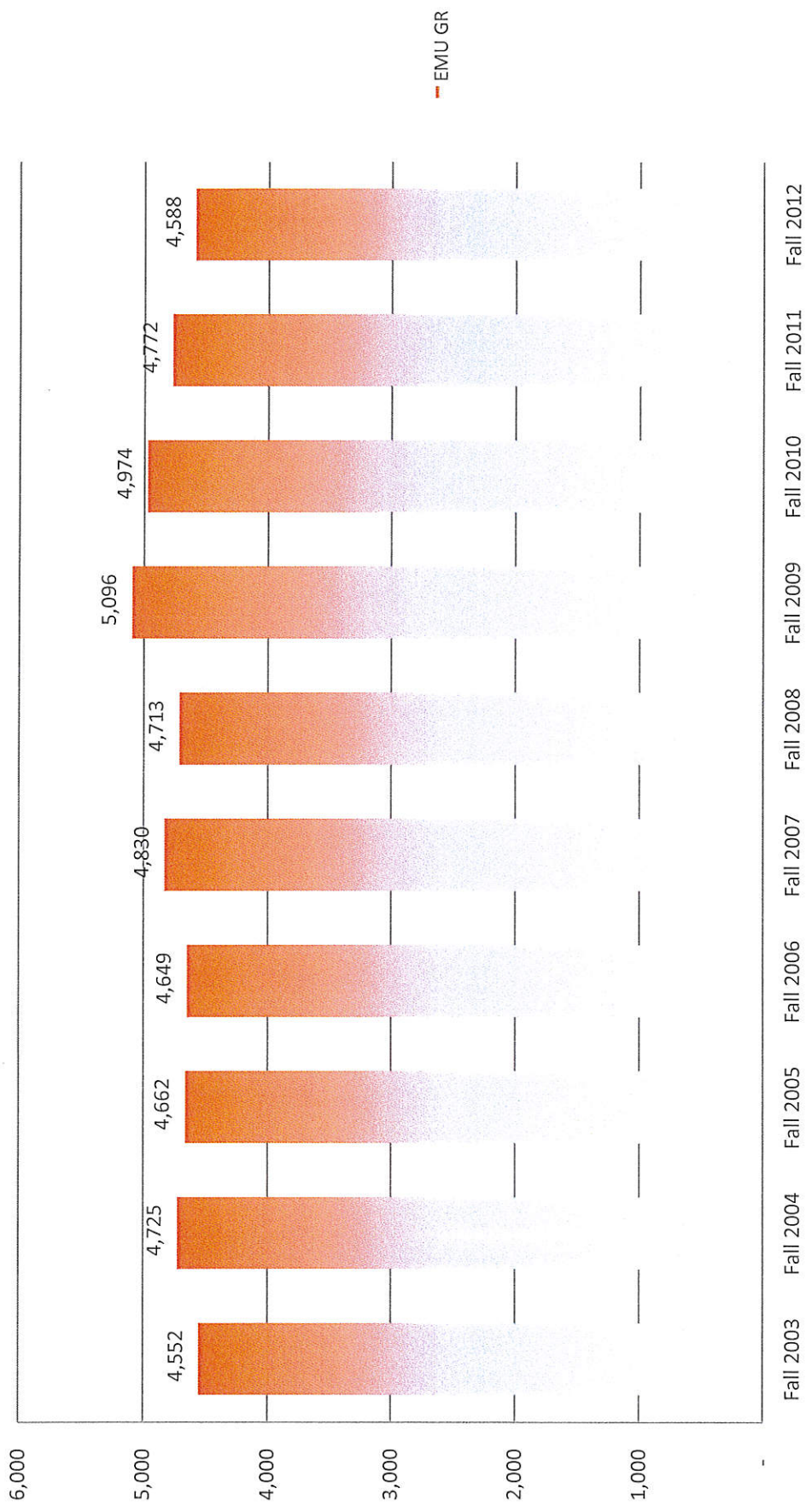
Eastern Michigan University Undergraduate Enrollment (Headcount) in Fall



Eastern Michigan University New FTIAC and Transfer Enrollment (Headcount) in Fall

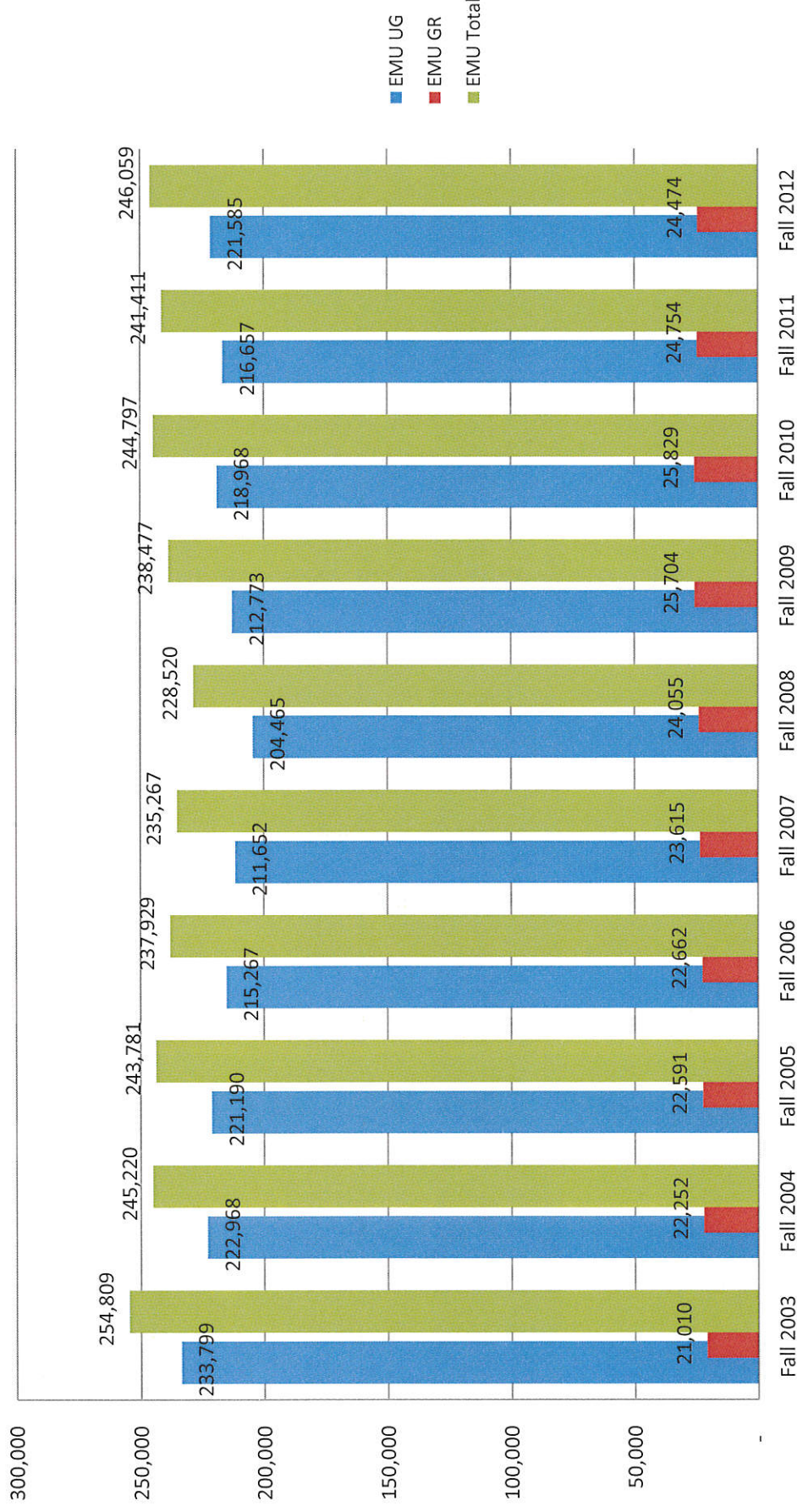


Eastern Michigan University Graduate Enrollment (Headcount) in Fall



Eastern Michigan University

Student Credit Hours in Fall



Fall Enrollment Trends by Colleges and by Level (Headcount)

College	Level	Fall 2003	Fall 2004	Fall 2005	Fall 2006	Fall 2007	Fall 2008	Fall 2009	Fall 2010	Fall 2011	Fall 2012
AA	UG	2,763	2,376	2,281	2,155	1,743	1,468	1,462	1,599	1,576	1,715
AA	GR	914	812	682	572	580	509	542	427	418	336
AA	Total	3,677	3,188	2,963	2,727	2,323	1,977	2,004	2,026	1,994	2,051
AS	UG	6,818	6,817	6,839	6,756	6,808	6,659	6,863	7,038	6,990	7,052
AS	GR	1,111	1,146	1,126	1,121	1,123	1,082	1,184	1,208	1,150	1,044
AS	Total	7,929	7,963	7,965	7,877	7,931	7,741	8,047	8,246	8,140	8,096
BU	UG	2,741	2,555	2,475	2,467	2,451	2,535	2,509	2,520	2,516	2,455
BU	GR	732	708	612	708	749	761	836	797	681	713
BU	Total	3,473	3,263	3,087	3,175	3,200	3,296	3,345	3,317	3,197	3,168
ED	UG	4,472	4,269	3,362	3,092	2,860	2,454	2,454	2,380	2,268	2,099
ED	GR	1,107	1,273	1,330	1,331	1,312	1,253	1,297	1,310	1,302	1,304
ED	Total	5,579	5,542	4,692	4,423	4,172	3,707	3,751	3,690	3,570	3,403
HH	UG	1,612	1,657	2,016	2,168	2,365	2,452	2,714	3,161	3,345	3,695
HH	GR	350	433	498	504	552	579	707	713	742	730
HH	Total	1,962	2,090	2,514	2,672	2,917	3,031	3,421	3,874	4,087	4,425
TC	UG	1,171	1,194	1,605	1,534	1,581	1,645	1,760	1,831	1,874	1,898
TC	GR	338	353	414	413	514	529	530	519	479	461
TC	Total	1,509	1,547	2,019	1,947	2,095	2,174	2,290	2,350	2,353	2,359
EMU	UG	19,577	18,868	18,578	18,172	17,808	17,213	17,762	18,529	18,569	18,914
EMU	GR	4,552	4,725	4,662	4,649	4,830	4,713	5,096	4,974	4,772	4,588
EMU	Total	24,129	23,593	23,240	22,821	22,638	21,926	22,858	23,503	23,341	23,502

Fall Enrollment Trends by College and by Level (SCH)

College	Level	Fall 2003	Fall 2004	Fall 2005	Fall 2006	Fall 2007	Fall 2008	Fall 2009	Fall 2010	Fall 2011	Fall 2012
AA	UG	885	740	720	773	829	1,032	1,038	1,173	1,166	1,475
AA	GR	-	-	-	66	336	525	546	570	-	-
AA	Total	885	740	720	839	1,165	1,557	1,584	1,743	1,166	1,475
AS	UG	156,132	148,136	144,580	141,160	142,024	135,474	143,127	146,092	144,926	149,145
AS	GR	6,373	6,577	6,453	6,337	6,459	6,371	6,671	7,075	6,702	6,190
AS	Total	162,505	154,713	151,033	147,497	148,483	141,845	149,798	153,167	151,628	155,335
BU	UG	22,002	20,713	20,553	20,773	21,606	21,732	21,784	22,314	21,640	21,060
BU	GR	5,391	4,749	4,355	4,570	4,960	5,175	5,441	5,027	4,979	4,939
BU	Total	27,393	25,462	24,908	25,343	26,566	26,907	27,225	27,341	26,619	25,999
ED	UG	34,858	33,661	23,527	21,248	19,616	18,126	17,386	16,577	15,233	13,730
ED	GR	5,412	6,304	6,356	6,161	5,879	5,535	5,991	6,162	6,166	6,440
ED	Total	40,270	39,965	29,883	27,409	25,495	23,661	23,377	22,739	21,399	20,170
HH	UG	8,992	9,080	18,421	18,710	15,723	16,351	17,457	19,883	21,262	23,269
HH	GR	2,353	3,007	3,591	3,702	3,575	3,763	4,508	4,443	4,663	4,633
HH	Total	11,345	12,087	22,012	22,412	19,298	20,114	21,965	24,326	25,925	27,902
TC	UG	10,930	10,638	13,389	12,603	11,854	11,750	11,981	12,929	12,430	12,906
TC	GR	1,481	1,615	1,836	1,826	2,406	2,686	2,547	2,552	2,244	2,272
TC	Total	12,411	12,253	15,225	14,429	14,260	14,436	14,528	15,481	14,674	15,178
EMU	UG	233,799	222,968	221,190	215,267	211,652	204,465	212,773	218,968	216,657	221,585
EMU	GR	21,010	22,252	22,591	22,662	23,615	24,055	25,704	25,829	24,754	24,474
EMU	Total	254,809	245,220	243,781	237,929	235,267	228,520	238,477	244,797	241,411	246,059