

BOARD OF REGENTS
EASTERN MICHIGAN UNIVERSITY

RECOMMENDATION
FINANCE AND INVESTMENT COMMITTEE

SECTION: 17

DATE:
February 5, 2016

ACTION REQUESTED

It is recommended that the Board of Regents receive and place on file the minutes from the December 8, 2015 Finance and Investment Committee meeting and the Working Agenda for the February 5, 2016 meeting.

STAFF SUMMARY

December 8, 2015 Meeting Agenda

Agenda items include the following recommendations

- 2016-17 Room, Board and Apartment Rates
- The Eastern Michigan University Foundation Financial Report as of June 30, 2015
- Emeritus Staff Awards

February 5, 2016 Meeting Agenda

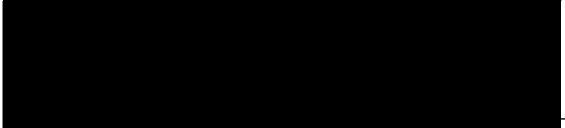
- 2016-17 Capital Budget and 3 Year Capital Plan
- OMB Circular A-133 Supplemental Financial Report
- Presentation: Increasing External Support for Research at EMU
- Emeritus Staff Awards

FISCAL IMPLICATIONS

None

ADMINISTRATIVE RECOMMENDATION

The proposed Board action has been reviewed and is recommended for Board approval.



University Executive Officer

February 5, 2016

Date

Eastern Michigan University
Finance and Investment Committee
Meeting Minutes
December 8, 2015

The meeting was called to order by Regent Beth Fitzsimmons at 11:45 a.m.

A motion was made, seconded and approved to accept the minutes from the October 13, 2015 Finance and Investment Committee meeting.

The agenda includes 2 items.

Section14: 2014-15 Eastern Michigan University Foundation Consolidated Financial Report

It is recommended that the Board of Regents approve the Fiscal Year 2016-17 rates for residence halls, apartments, and meal plans.

Section15: Recommendation: FY17 Room and Board, Apartments Rates

It is recommended that the Board of Regents approve the Fiscal Year 2016-17 rates for residence halls, apartments, and meal plans.

Section 3: Recommendation: Emeritus Staff Status

It is recommended that the Board of Regents grant Emeritus Staff Status to Two (2) staff member: Evelyn Panches, Academic Advisor Senior, University Advising & Career Development Center, who retired on May 29, 2015 and Sharon Crutchfield, Secretary, Honors College, who retired on June 30, 2015.

The meeting was adjourned at 11:59 p.m.

Respectfully submitted,
Jada Wester
Executive Assistant to the
Chief Financial Officer

Increasing External Support for Research at EMU



RESEARCH @ EMU

Elevating Communities, Inspiring Generations



INTRODUCTION

The purpose of today's presentation is to inform you about:

- Organizational developments in the research infrastructure support at EMU
- Overall goal to significantly increase research and research funding over ten years
- Metrics that will be used to measure progress

MISSION

EMU enriches lives in a supportive, intellectually dynamic and diverse community. **Our dedicated faculty balance teaching and research to prepare students with relevant skills and real world awareness.** We are an institution of opportunity where students learn in and beyond the classroom to benefit the local and global communities.

2013-2014 UNIVERSITY STRATEGIC PLAN

University Strategic Themes: High Performing Academic Programs and Quality Research

- **Goal 2:** Increase research to attract external funding and improve student education, with a focus on graduate education
- **Objective 2.3:** Systematically address staffing and infrastructure costs of scholarship (lab equipment, data curation, library costs).

GOALS

Increase Awards for sponsored activity from ~\$10M to:

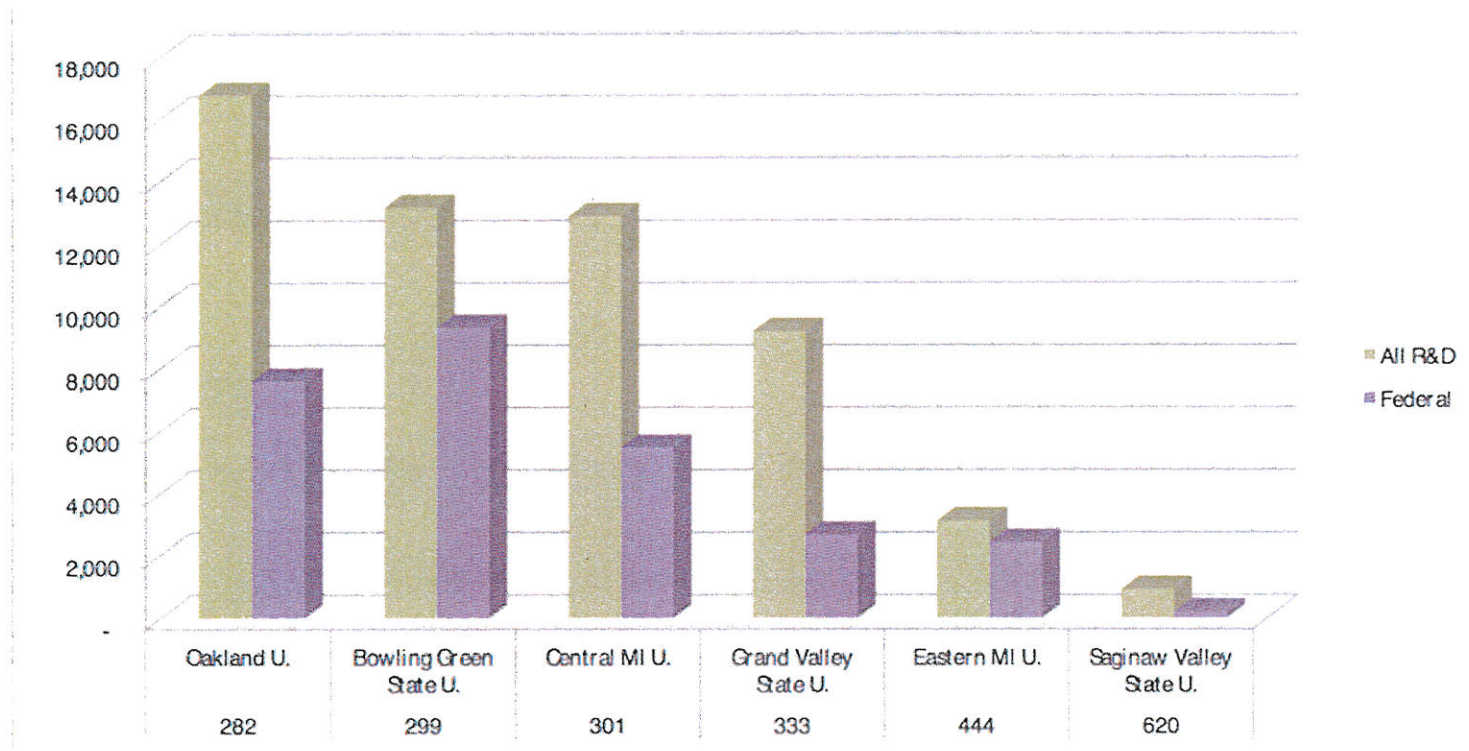
- \$15M after 5 years
- \$20M after 10 years

Increase Salary Recoupment from \$275K to:

- \$600K annually in 5 years
- \$1.2M annually in 10 years

GOALS

Increase research expenditures so we are in line with our peers:



Source: FY2013 NSF Higher Education Research and Development Survey

TARGETS FOR PROPOSALS AND AWARDS

Proposal Goals	Base Year: FY2014	FY2015	FY2016	FY2017	FY2018	FY2019
No.	160	184	212	243	280	322
Value	\$30.6M	\$31.5M	\$32.4M	\$33.4M	\$34.4M	\$35.4M

Award Goals	Base Year: FY2013*	FY2015	FY2016	FY2017	FY2018	FY2019
No.	113	97	90	104	120	138
Value	\$10.9M	\$11.7M	\$13.9M	\$14.4M	\$14.8M	\$15.2M

*Base year FY2013 is used for awards as there was an anomalous FY2014 saw a significant drop in sponsored activity due to sequestration, federal shut-down, and two EMU investigators leaving for other institutions. FY2013 is more typical of EMU's sponsored activity

CHALLENGES

External:

- Demand for inter-disciplinary research to solve complex modern problems
- Decreasing federal budgets
- Increased research compliance requirements
- Increased transparency and accountability
- Increased federal reporting requirements

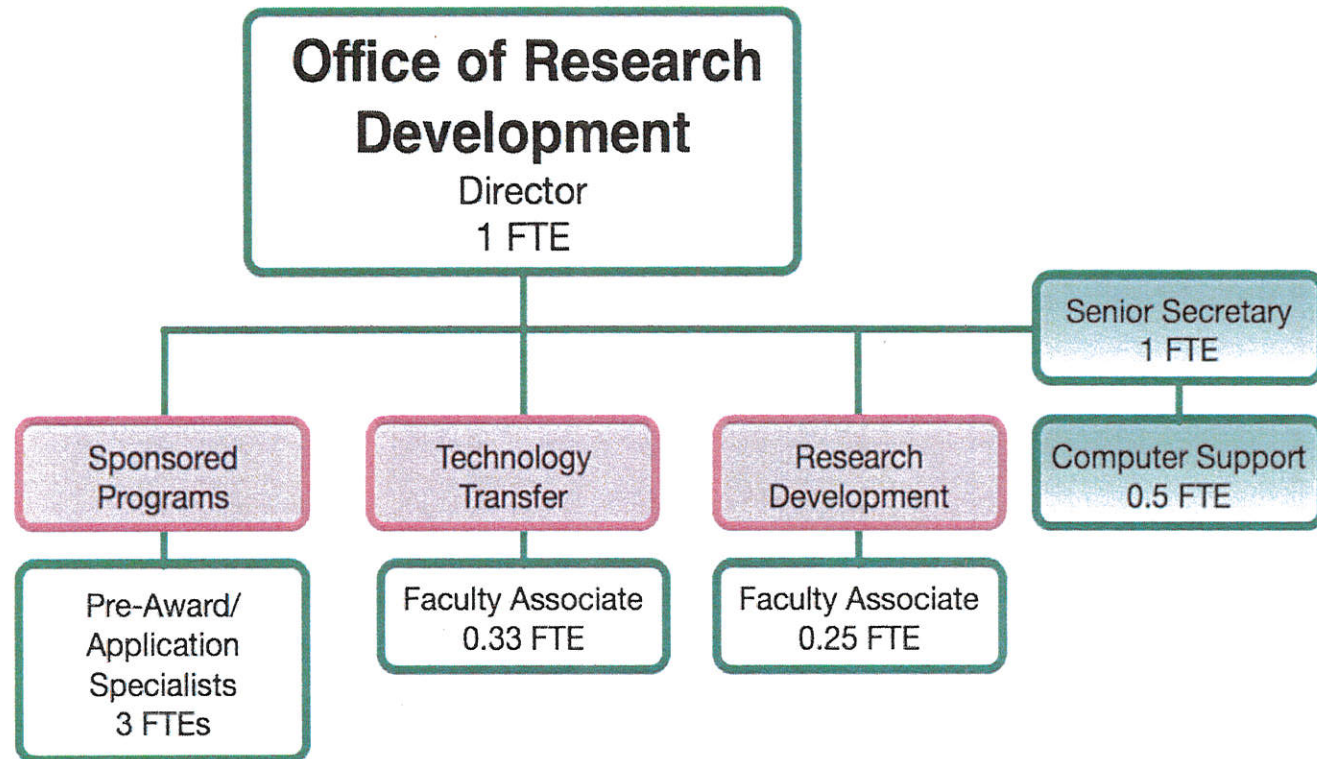
CHALLENGES

Internal:

- Faculty told us without wrap-around support, it would be difficult to attract new or keep current faculty engaged in the grant-writing pipeline

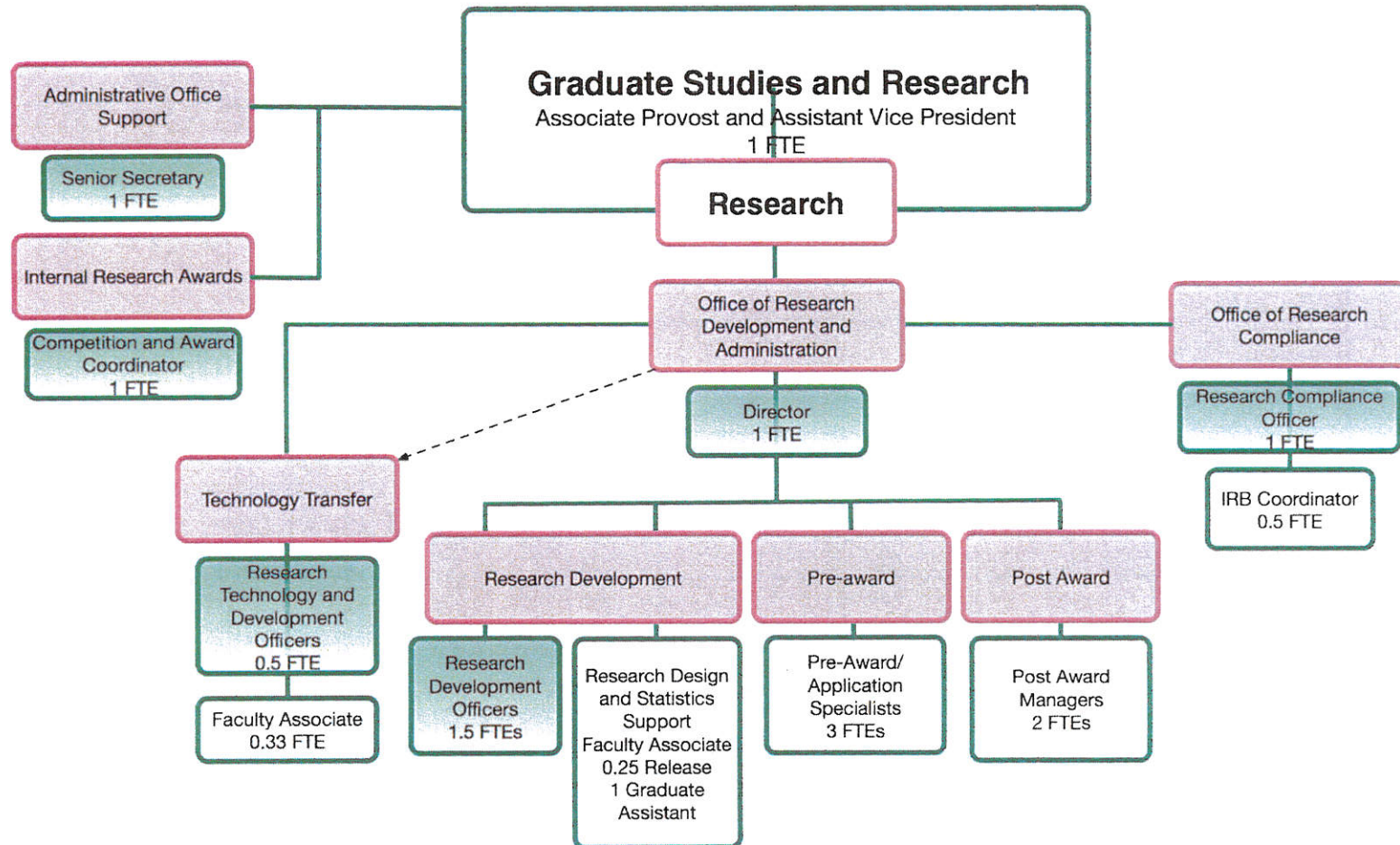
Research Support Infrastructure

- FY2010-FY2014



Research Support Infrastructure

○ FY2014 Expansion



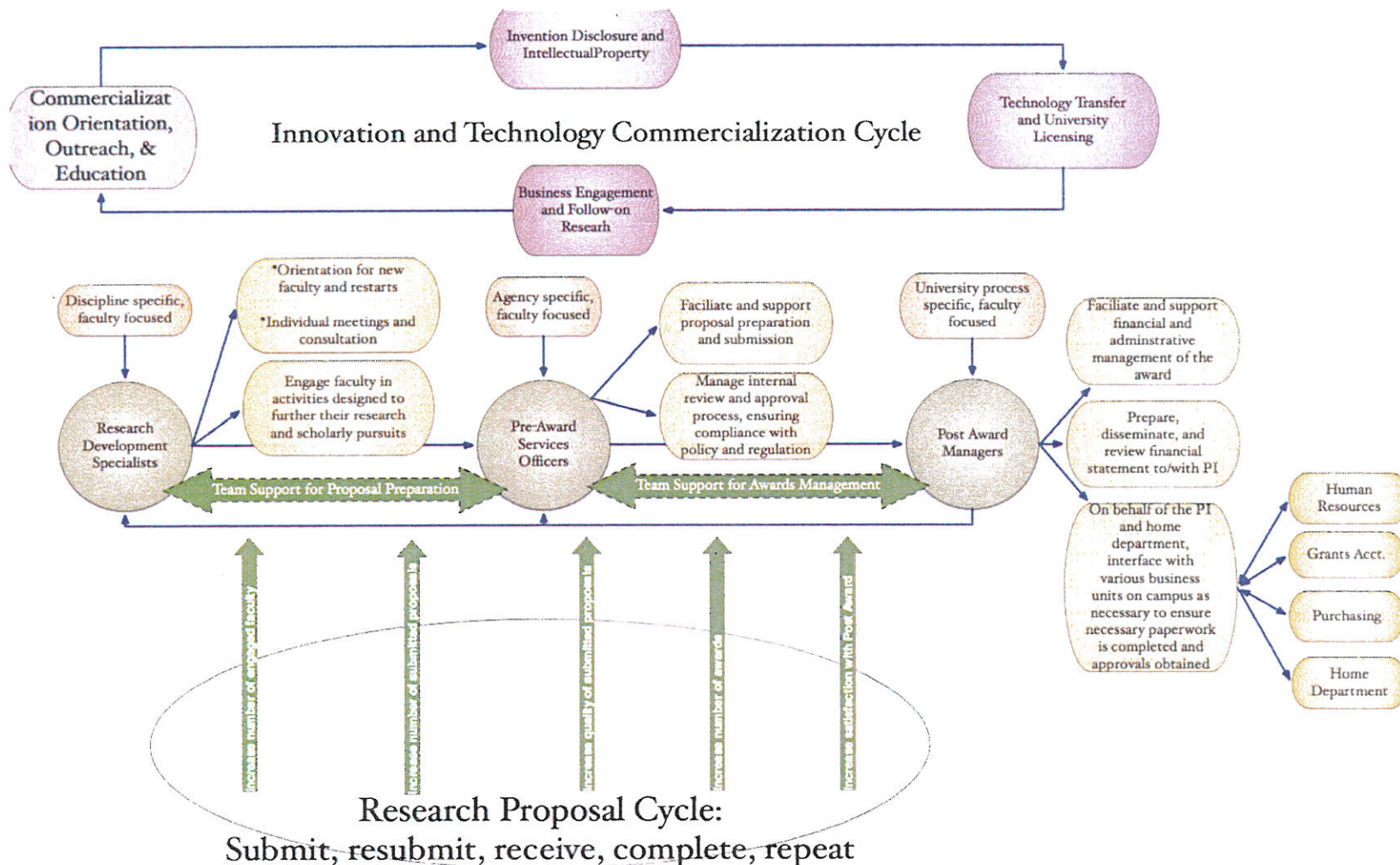


EXPANDED RESEARCH SUPPORT INFRASTRUCTURE

Faculty-focused, one-stop-shop using a team approach to service delivery:

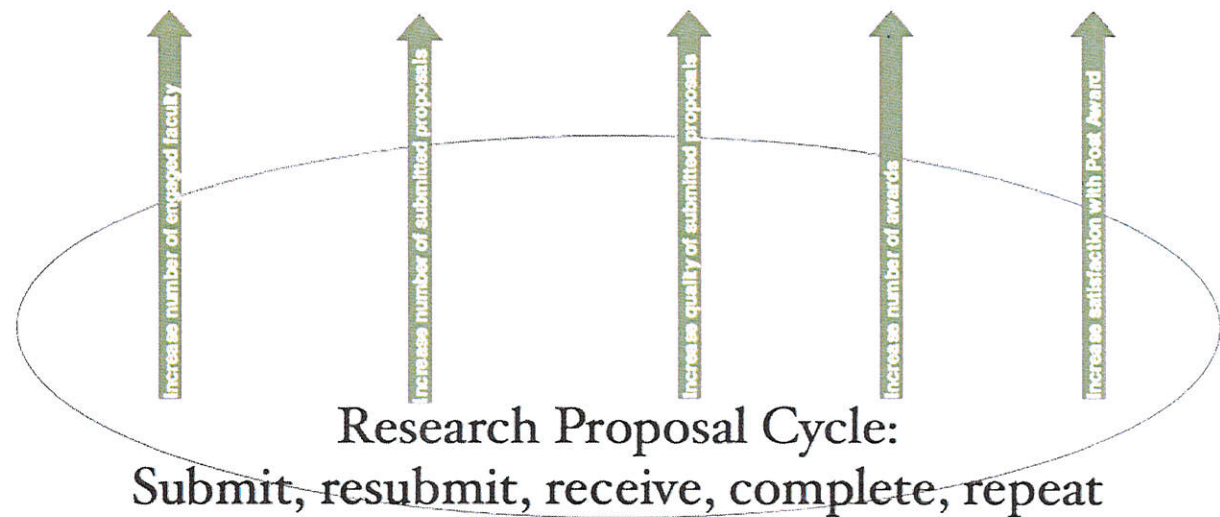
- Research Development
- Pre-award Proposal Support
- Post-Award Financial Management Services
- Office of Research Compliance
- Technology Transfer and Business Engagement

RESEARCH SUPPORT ACTIVITIES



RESEARCH PROPOSAL CYCLE

- Submit
- Resubmit
- Receive
- Complete
- Repeat



Increasing: 1) active faculty, 2) number of proposals, 3) proposal quality, 4) number of awards, and 5) satisfaction with post award activities

RESEARCH DEVELOPMENT

Discipline specific, faculty focused:

- Engaging faculty in activities designed to further their research and scholarly pursuits, such as, developing a research agenda, and writing techniques
- Orientation for new faculty and restarts
- Culture of Research Excellence Fellowship Program (CoRE Fellowship Program) where faculty have time and access to expertise so they are empowered to develop high quality research proposals
- Workshops
- Individual meetings and consultations

PREAWARD PROPOSAL SUPPORT

Agency specific, faculty focused:

- Facilitate and support proposal preparation and submission
- Manage internal review and approval process, ensuring compliance with university policy, sponsor guidelines and regulations
- Monitor sponsors and communicate funding direction and programs

POST AWARD MANAGEMENT SUPPORT

University process specific, faculty focused:

- Facilitate and support financial and administrative transactions
- Prepare, disseminate, and review financial statements to/with PI
- On behalf of the PI and home department, interface with other campus business offices necessary to complete paperwork and obtain approvals, (e.g., HR, purchasing, grants accounting)



TECHNOLOGY TRANSFER AND BUSINESS ENGAGEMENT

Putting University-developed research into practice for the public good is an important form of dissemination that expands relationships with business and industry that lead to:

- More industry-sponsored research
- More student opportunities
- Licensing agreements of University-owned IP

RESEARCH COMPLIANCE

- Human Subjects Protections
- Care and Use of Animals
- Biosafety (in support of Health & Safety)
- Radiation Safety (in support of Health & Safety)
- Academic Integrity, including Conflict of Interest
- Export Controls

DASHBOARD

Grant/Contract Proposal and Award Activity

July - December

	FY2016 Activity through 12/31		FY2015 Activity through 12/31		FY2016 vs. FY2015 Actual to Date Var.	
	No. to Date	Dollar Value to Date	No. to Date	Dollar Value to Date	No. to Date	Dollar Value to Date
Proposals	68	7,089,587	80	8,035,796	(12)	(946,209)
Awards	71	7,052,082	50	7,454,547	21	(402,465)

Past Three Fiscal Years

	FY2015 Activity through 06/30		FY2014 Activity through 06/30		FY2013 Activity through 06/30		FY2015 vs. FY2014 Actual to Date Var.	
	No. to Date	Dollar Value to Date	No. to Date	Dollar Value to Date	No. to Date	Dollar Value to Date	No. to Date	Dollar Value to Date
Proposals	158	24,059,732	157	30,595,853	201	47,379,620	1	(6,536,121)
Awards	97	11,703,772	108	7,961,231	113	10,953,041	(11)	3,742,541

CONCLUSIONS

We made an investment in research infrastructure

- Consistent with University strategic plan
- Enhance our capacity to compete for external funding
- Support University research
- Support high-quality academic programs
- Support undergraduate and graduate student research experiences

CONCLUSIONS

- We have goals to double sponsored activity by 2024.
- We have metrics to measure our progress towards that goal.